

0.8mm HEADER / 1.00mm HEADER

.031" [0.8] CENTERLINE / .039" [1.00] CENTERLINE

VALCONN
ELECTRONICS, INC.

SPECIFICATIONS

Material:

Insulator: Liquid Crystal Polymer (LCP), glass reinforced thermoplastic, rated UL 94V-0

Contacts: Phosphor Bronze

Plating:

5 µin gold over 50 µin nickel underplate

ORDERING INFORMATION

choose one from each category as shown in sample below

PA	20	S
Series	Total Positions	Leads
PA - 0.8 mm Dual Row Male Header PQ - 0.8 mm Dual Row Socket Strip PB - 1.00 mm Dual Row Male Header PT - 1.00 mm Dual Row Socket Strip	04 - 120	T - Thru Hole Leads S - Surface Mount Leads

Electrical:

Operation voltage: 250 VAC max

Current rating: 1 Amp max

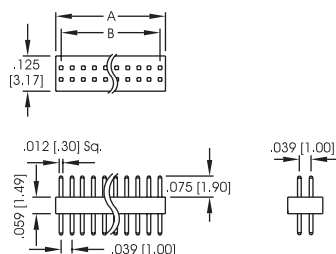
Contact resistance: 15 mΩ max

Insulation resistance: 500 MΩ min @ 500 VDC between adjacent contacts (75°F and 50% R.H.)

Dielectric withstanding voltage: 500 VDC min rms (sea level)

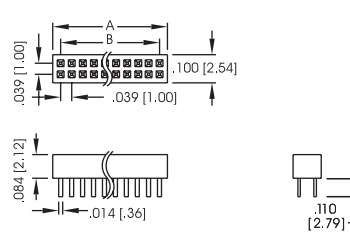


PB SERIES THROUGH HOLE 1.00mm



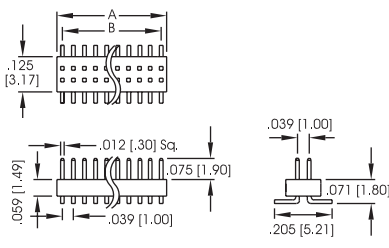
A = .039 [1.00] X No. of Pos. Per Row + .017 [0.43]
B = .039 [1.00] X No. of Spaces

PT SERIES THROUGH HOLE 1.00mm



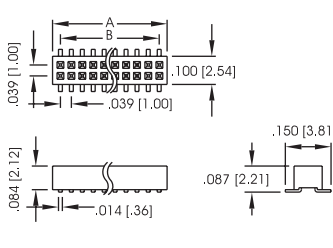
A = .039 [1.00] X No. of Pos. Per Row + .017 [0.43]
B = .039 [1.00] X No. of Spaces

PB SERIES SMT 1.00mm



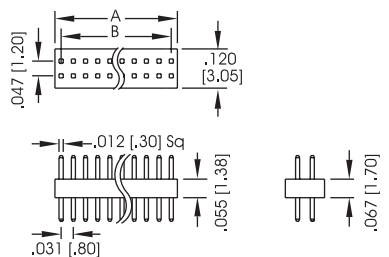
A = .039 [1.00] X No. of Pos. Per Row + .017 [0.43]
B = .039 [1.00] X No. of Spaces

PT SERIES SMT 1.00mm



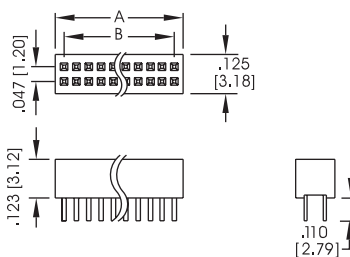
A = .039 [1.00] X No. of Pos. Per Row + .017 [0.43]
B = .039 [1.00] X No. of Spaces

PA SERIES THROUGH HOLE 0.8mm



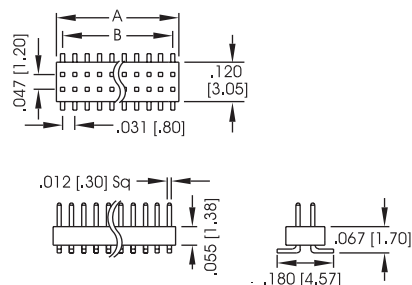
A = .031 [0.80] X No. of Pos. Per Row + .017 [0.43]
B = .031 [0.80] X No. of Spaces

PQ SERIES THROUGH HOLE 0.8mm



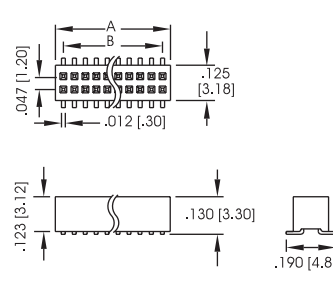
A = .031 [0.80] X No. of Pos. Per Row + .017 [0.43]
B = .031 [0.80] X No. of Spaces

PA SERIES SMT 0.8mm



A = .031 [0.80] X No. of Pos. Per Row + .017 [0.43]
B = .031 [0.80] X No. of Spaces

PQ SERIES SMT 0.8mm



A = .031 [0.80] X No. of Pos. Per Row + .017 [0.43]
B = .031 [0.80] X No. of Spaces