

PRODUCT NUMBER 64110 - X XX - XX - X LF LEAD FREE OPTION NOTE 9,10

RETENTION
R: RETENTIVE LEG
SEE NOTE 7

PIN LGTH. CONFIG.
01=SURFACE MNT.
02=THRU HOLE

PLATING:

S: 15u"/0.38um Au
ON CONTACT AREA
100u"/2.54um TIN
ON TAIL

G: 30u"/0.76um Au
ON CONTACT AREA
120u"/2.54um TIN
ON TAIL

POSITIONS PER ROW
05,07,08,10,13,15,
17,20,25,30,32,36

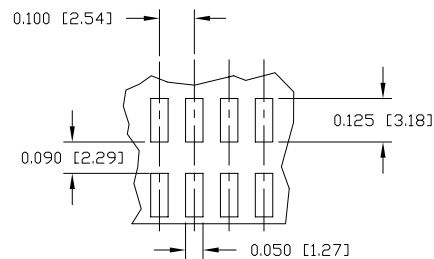


FIGURE 2
(RECOMMENDED SMT)
SCALE 1:1

NOTES:

1. MATERIAL HOUSING: HIGH TEMP. THERMOPLASTIC UL 94V-0, COLOR: BLACK
2. PIN MATERIAL: PHOS BRONZE
3. TO DETERMINE DIMENSIONS:
N=NUMBER OF POSITIONS PER ROW
EX. 10 POS., $N \times .100/2.54 = 1.00/2.54$
4. 0.9Kg MIN. PIN RETENTION IN EITHER DIRECTION
5. PACKAGE IN TRAYS.
6. RETENTION LEG:
5lbs/2.3Kgs MAX. INSERTION FORCE & .25lbs/1Kg MIN. RETENTION FORCE PER RETENTIVE PIN USING .062/1.57 THICK PCB AND RECOMMENDED HOLE PATTERN. RETENTIVE LOCATION AT THE DISCRETION OF THE MANUF. RETENTION IS TWO PINS PER PART ADJACENT TO ONE ANOTHER.
7. OMIT FROM PRODUCT NUMBER IF THIS FEATURE IS NOT APPLICABLE.
8. UNDERPLATING: 50u"/1.27um Ni.
9. ADD "LF" SUFFIX AT THE END OF PART NUMBER FOR LEAD FREE OPTIONS.
10. THE HOUSING WILL WITHSTAND EXPOSURE TO 260°C PEAK TEMPERATURE FOR 15 SECONDS IN A WAVE SOLDER APPLICATION WITH A 1.5mm MINIMUM THICK CIRCUIT BOARD. SEE APPLICATION NOTES/PROCEDURES IF THEY ARE AVAILABLE.

THE HOUSING WILL WITHSTAND EXPOSURE TO 260°C PEAK TEMPERATURE FOR 20 SECONDS IN A CONVECTION, INFRA-RED OR VAPOR PHASE REFLOW OVEN. SEE APPLICATION NOTE/PROCEDURES IF THEY ARE AVAILABLE.

11. THIS PRODUCT MEETS EUROPEAN UNION DIRECTIVES AND OTHER COUNTRY REGULATION AS DESCRIBED IN GS-22-008.

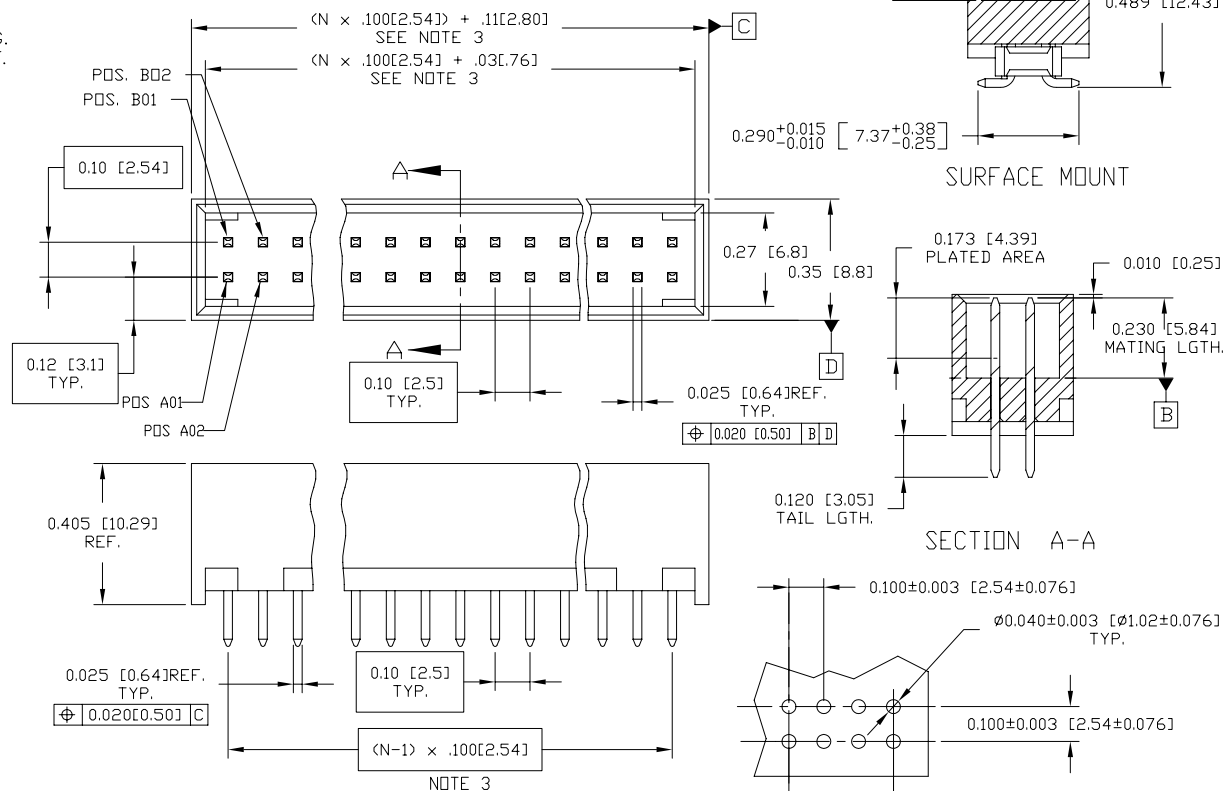


FIGURE 1
(RECOMMENDED THRU HOLE)
SCALE: 1:1

mat'l. code SEE NOTES				surface ISO 1302 ✓	tolerance ISO 406 ISO 1101	projection	product family HEADER		
ltr	ecn	no	dr	date	tolerances unless otherwise specified		title		
A	V92814	TAB	8/24/99		angles	.XX±.01/.3	SHROUDED HDR.		
B	B10891	GIP	1/25/02		linear	.XXX±.005/.13	.100/2.54cc PCB to PCB		
C	V21476	GIP	9/17/002	0°±2'		.XXXX±.0020/.051	scale 1:1		
D	V21476	GIP	9/17/02	dr	T. BRUNGARD	7/14/99	FCI		
D	V03-0476	DAI	6/17/03	enrg	H. SUNDY	7/14/99			
E	M05-0089	MHT	5/19/05	chr	H. SUNDY	7/14/99			
F	M07-0116	AGS	2/19/07	appd	H. SUNDY	7/14/99			
sheet	revision	F					type Product Customer Drawing		
index	sheet	1							