

MICRO SWITCH

FREEPORT ILLINOIS, U S A
A DIVISION OF HONEYWELL
FED. MFG. CODE 91929

ACTUATOR SWITCH

CATALOG LISTING

JX - 47

(M) JX - 47

REPLACES SKETCH 29982

RELEASE NO. PR - 4276

JX - 47

M

DRAWING
NUMBER

X

8

ISSUE

89

CHECK

REVISIONS

A	NEW DWG PR-4276 BEN 17 AUG 74
B	C047771 CJH MAY 80
C	C079303 DLT 8 MAR 95
D	C082929 DLT 13 MAY 96

CHECK

74

20

AUG

74

CHECK

D

J

20

AUG

74

CHECK

17

AUG

74

CHECK

B

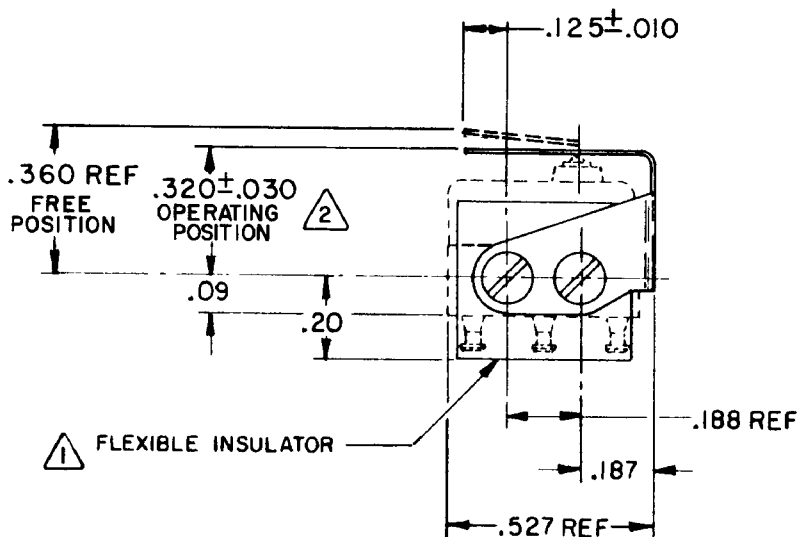
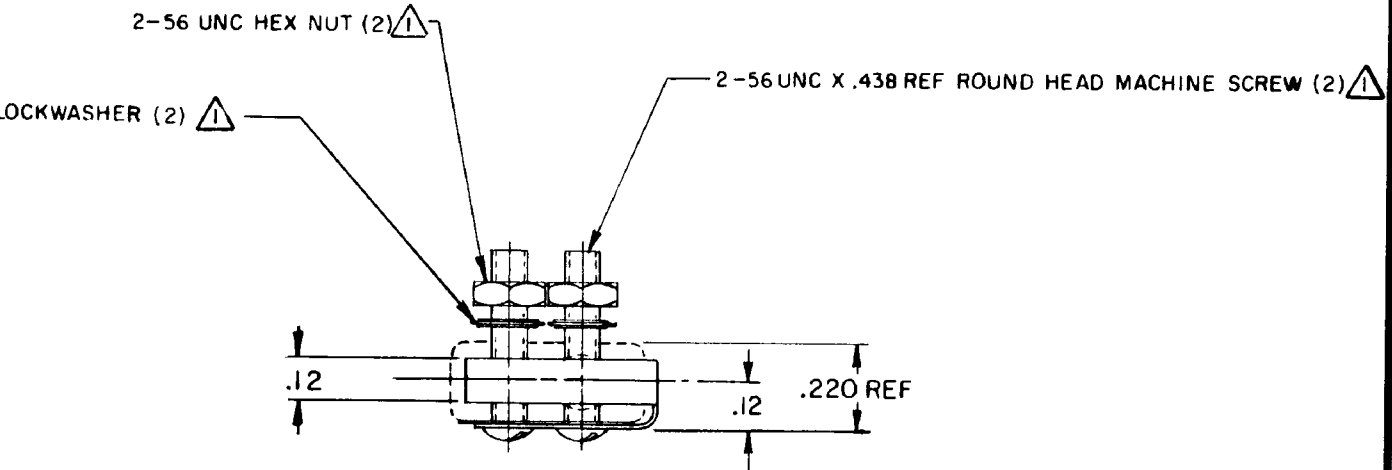
E

N

17

AUG

74



CORROSION RESISTANT
STEEL ACTUATOR (TYPE 301)

.010 REF

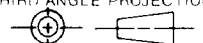
DOTTED LINES INDICATE
BASIC SWITCH IN PLACE

NOTE

- ① - SCREWS, NUTS, LOCKWASHERS AND INSULATOR FURNISHED UNASSEMBLED
- ② - SLIGHT ROTATION BETWEEN BASIC AND ACTUATOR MAY BE NECESSARY TO OBTAIN OPERATING POSITION

THIS DRAWING COVERS A PROPRIETARY ITEM AND IS THE PROPERTY OF MICRO SWITCH, A DIVISION OF HONEYWELL. THIS DRAWING IS NOT TO BE COPIED OR USED WITHOUT THE APPROVAL OF MICRO SWITCH.

THIRD ANGLE PROJECTION



CHARACTERISTICS

OPERATING FORCE --- 7 OZ APPROX

RELEASE FORCE --- 2 OZ APPROX

DIFFERENTIAL TRAVEL --- .030 APPROX

OVERTRAVEL --- .030 MIN

ELECTRICAL DATA

CONTACT ARRANGEMENT

SCALE 2 TO 1

DO NOT SCALE PRINT

TOLERANCES

APPLY TO DESIGN UNITS CONVERSIONS ARE ONLY FOR
REFERENCE UNLESS NOTED TOLERANCES ARE ±

DIM.	TOL	DIM	TOL
mm	mm/in	in	mm/in
NO PLACES	X	1/04	
ONE PLACE	X, X	0.4/016	X X
TWO PLACES	X, XX	0.15/006	X XX
THREE PLACES	X, XXX	0.38/015	X XXX
ANGLES		0.13/005	

SI METRIC

US CUSTOMARY

DESIGN UNITS



WEIGHT

FO-52848-A

DRAWN

Mouser Electronics

Authorized Distributor

Click to View Pricing, Inventory, Delivery & Lifecycle Information:

[Honeywell:](#)

[JX-47](#)