

PART  
NAME

DATA COM DISTRIBUTION CABINET

PART  
No.

DC-8050

CABINET RACK

MATERIAL:

PANEL MOUNTING RAILS \_\_\_\_\_ 12 GA. STEEL  
VERTICAL RAILS \_\_\_\_\_ 14 GA. STEEL  
TOP, BOTTOM, PLATES &  
RAIL SUPPORTS \_\_\_\_\_ 16 GA. STEEL  
SIDES & REAR DOOR \_\_\_\_\_ 20 GA. STEEL

FINISH:

FRAME ASSEMBLY, SIDES, REAR DOOR  
& REAR DOOR HINGES \_\_\_\_\_ BLACK TEXTURE  
\_\_\_\_\_ ROYAL BLUE TEXTURE  
\_\_\_\_\_ WHITE TEXTURE  
PANEL MOUNTING RAILS \_\_\_\_\_ SMOOTH BLACK

CABLE MANAGEMENT PANEL

MATERIAL: 16 GA. STEEL  
FINISH: BLACK

CABLE CLIP BRACKETS

MATERIAL: 16 GA. SPRING STEEL  
FINISH: BLACK

LOCKING PLEXIGLAS DOOR

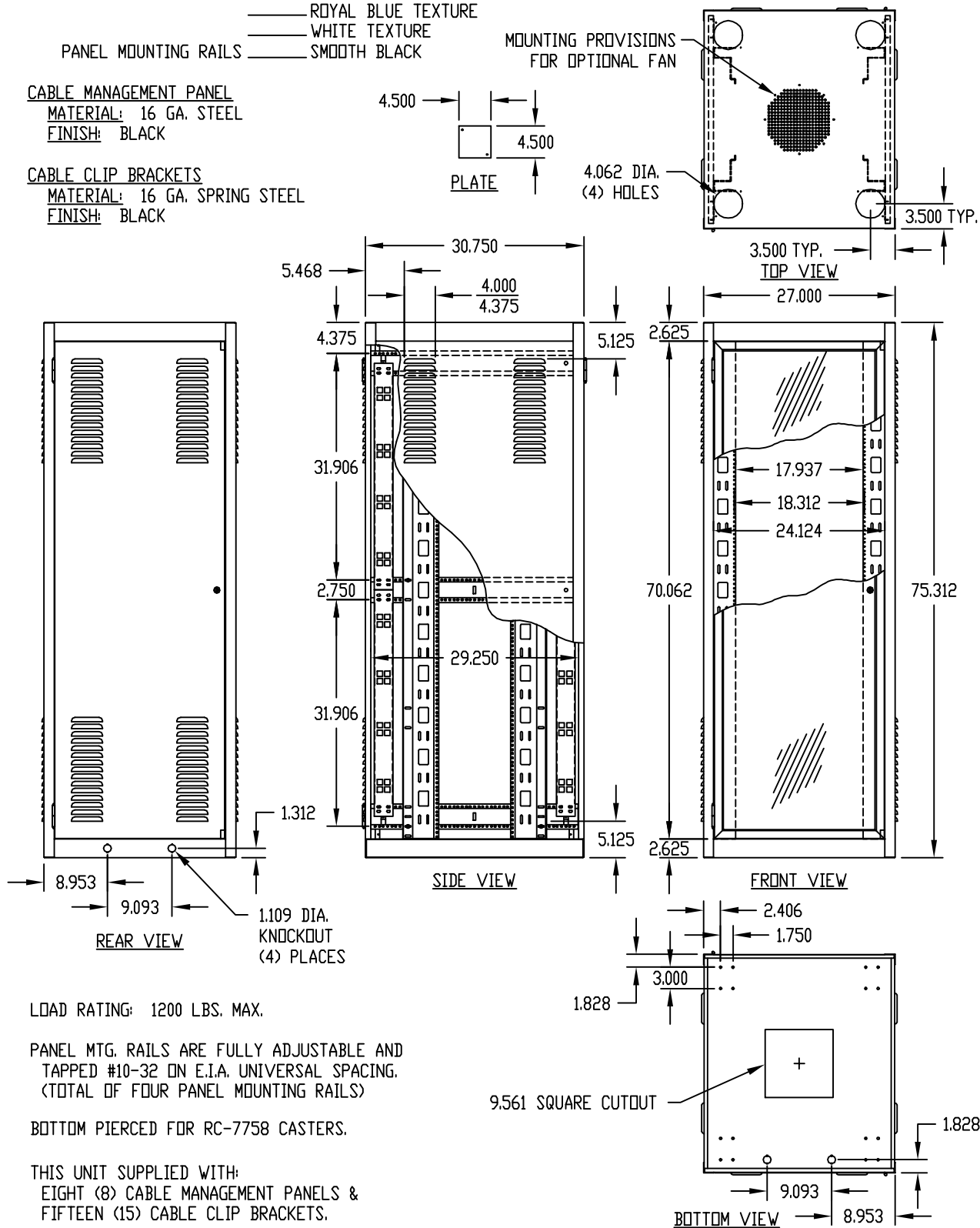
MATERIAL:

DOOR FRAME \_\_\_\_\_ ALUMINUM EXTRUSION  
PLEXIGLAS \_\_\_\_\_ 3/16 THICK

FINISH:

ALUMINUM EXTRUSIONS \_\_\_\_\_ CLEAR ANODIZED  
PLEXIGLAS \_\_\_\_\_ SMOKE GRAY  
DOOR HINGES \_\_\_\_\_ METALLIC GRAY

FULL LENGTH ALUMINUM EXTRUSION FRAMED  
LOCKING PLEXIGLAS DOOR FLUSH MOUNTED.



# Mouser Electronics

Authorized Distributor

Click to View Pricing, Inventory, Delivery & Lifecycle Information:

[Bud Industries:](#)

[DC-8050-BT](#)