

LOC	DIST	REVISIONS					
		P	LTR	DESCRIPTION	DATE	DWN	APVD
AD	00		B	REVISED PER ECO-12-006972	23AUG2012	KH	JE

- 2

PHOSPHOR BRONZE
- 3

LCP, UL94V-0
- 4

FINISH:  
CONTACT MATING AREA MEETS THE PERFORMANCE REQUIREMENTS OF  
TE CONNECTIVITY PRODUCT SPECIFICATION 108-1957; BASED ON  
TELCORDIA GR-1217-CORE; APPLICATIONS IN UNCONTROLLED ENVIRONMENTS.  
COMPLIANT PIN AREA: 0.5µm MIN MATTE TIN OVER BASE PLATING.
- 5

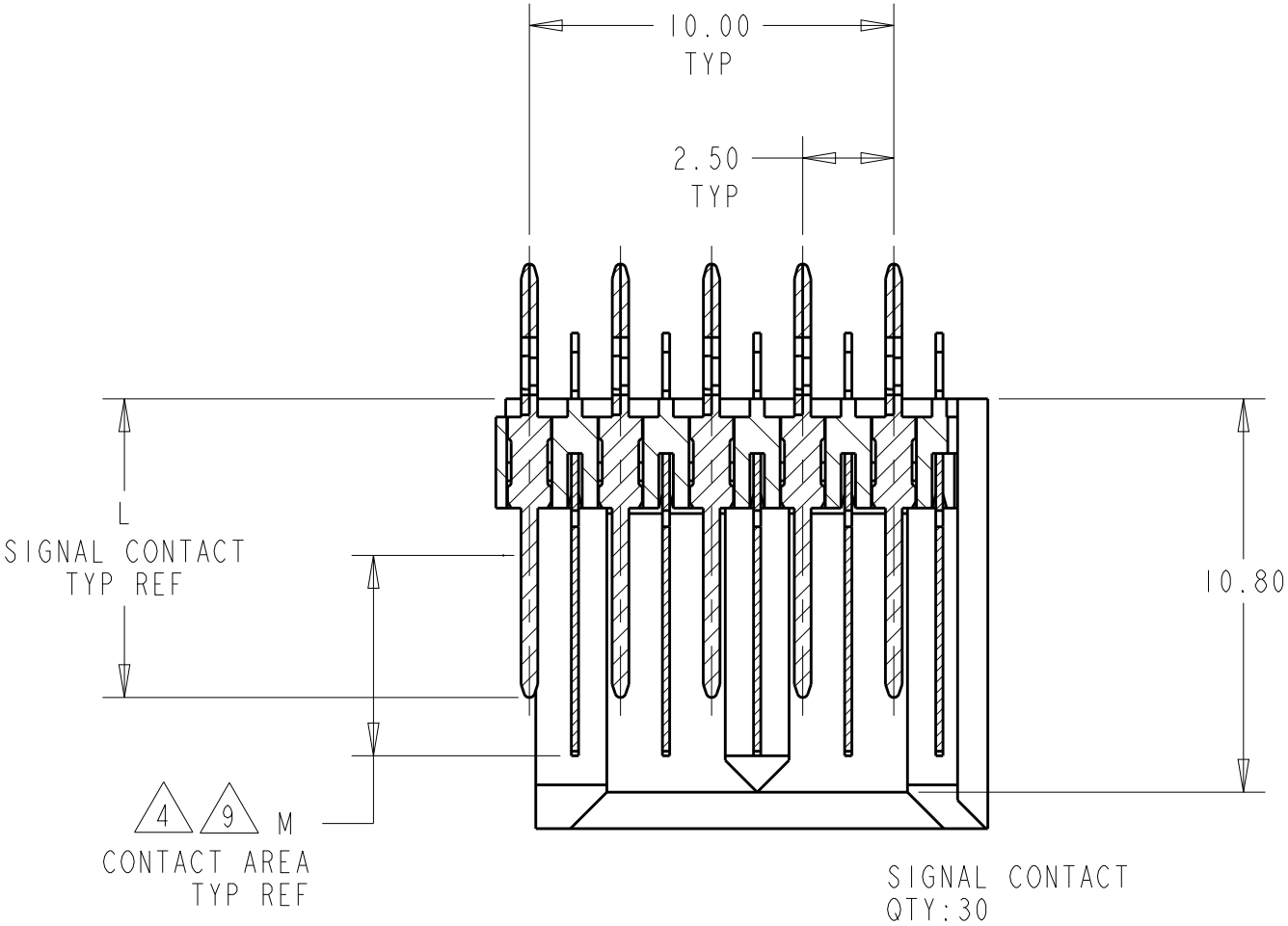
CONNECTOR MARKED WITH PART NUMBER AND DATE CODE
- 6

REFERENCE APPLICATION SPEC 114-13020 FOR RECOMMENDED  
PLATED THRU HOLE DIAMETER AND PLATING THICKNESS.
- 7

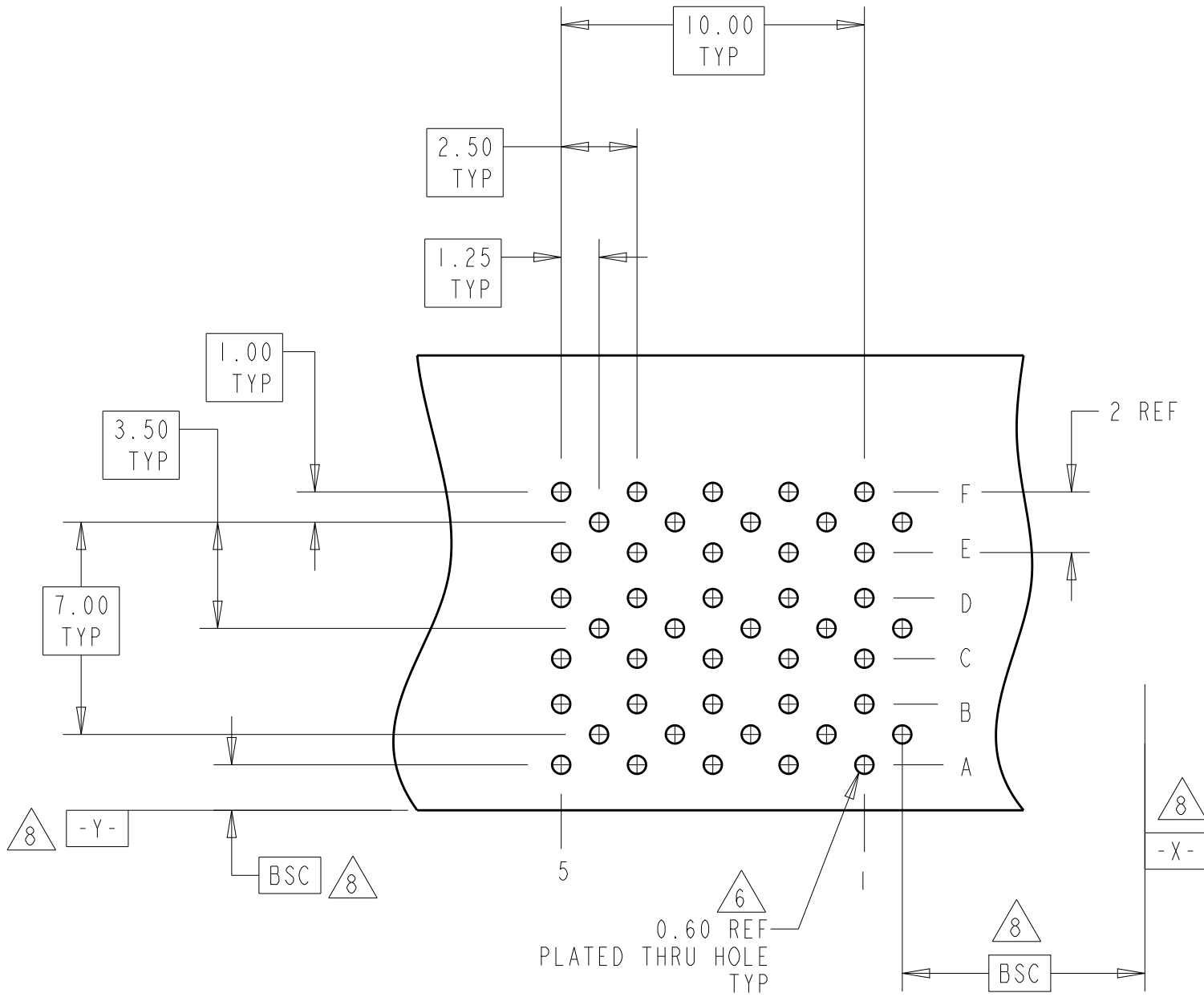
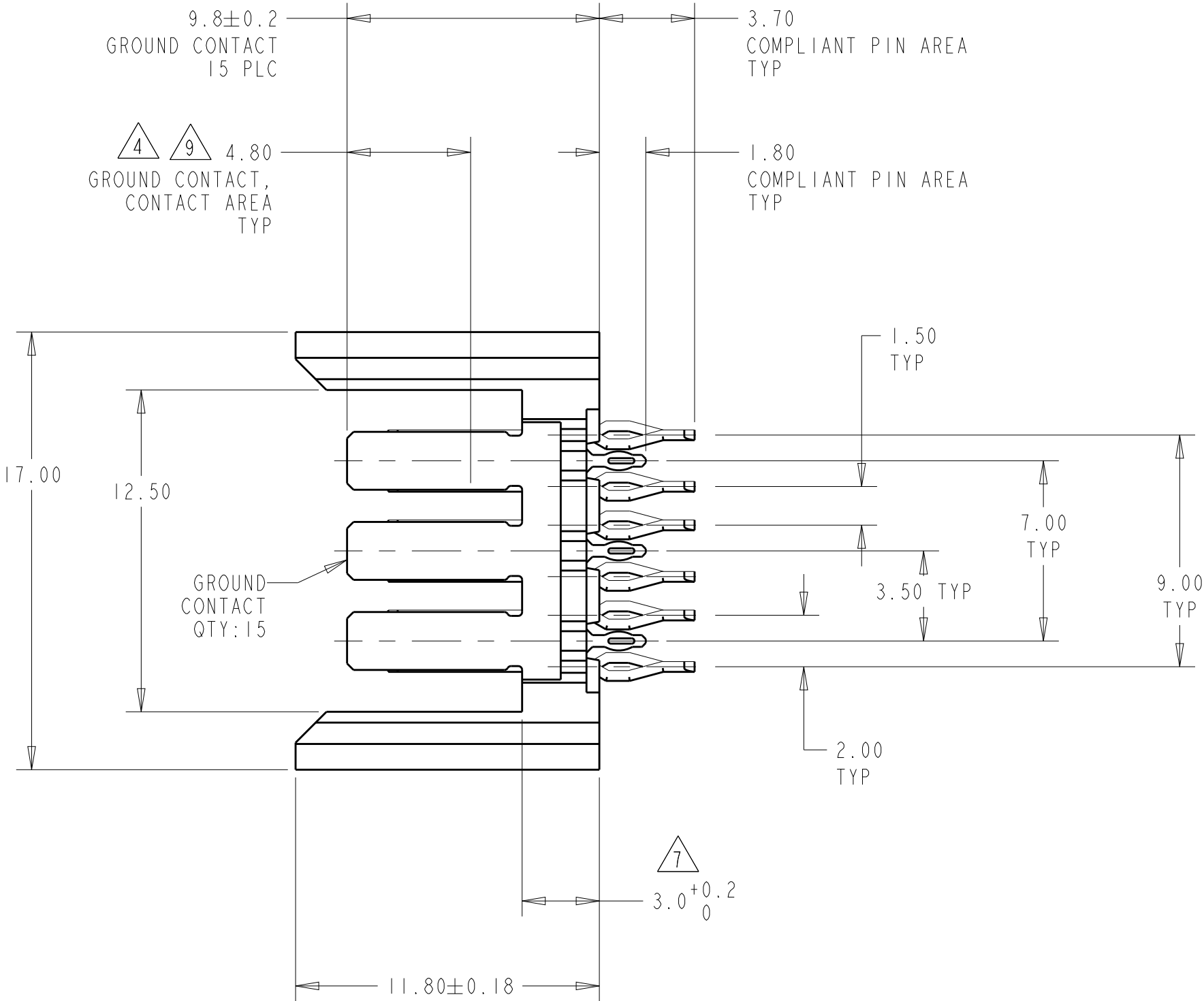
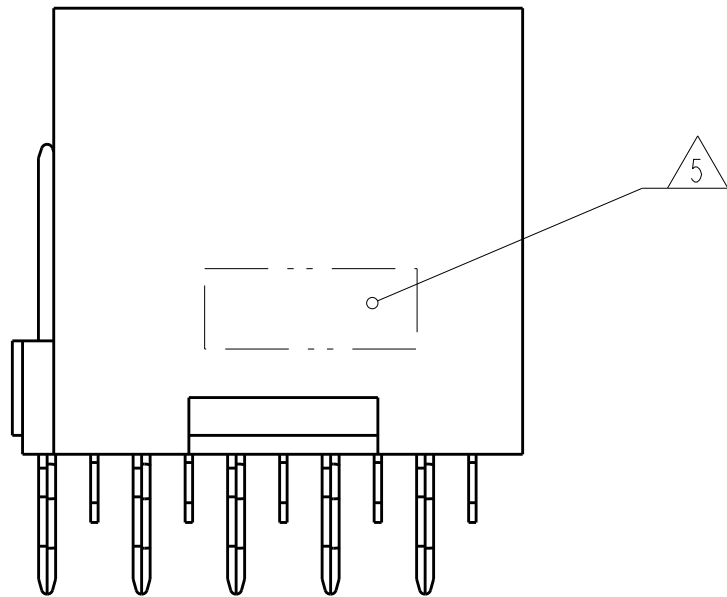
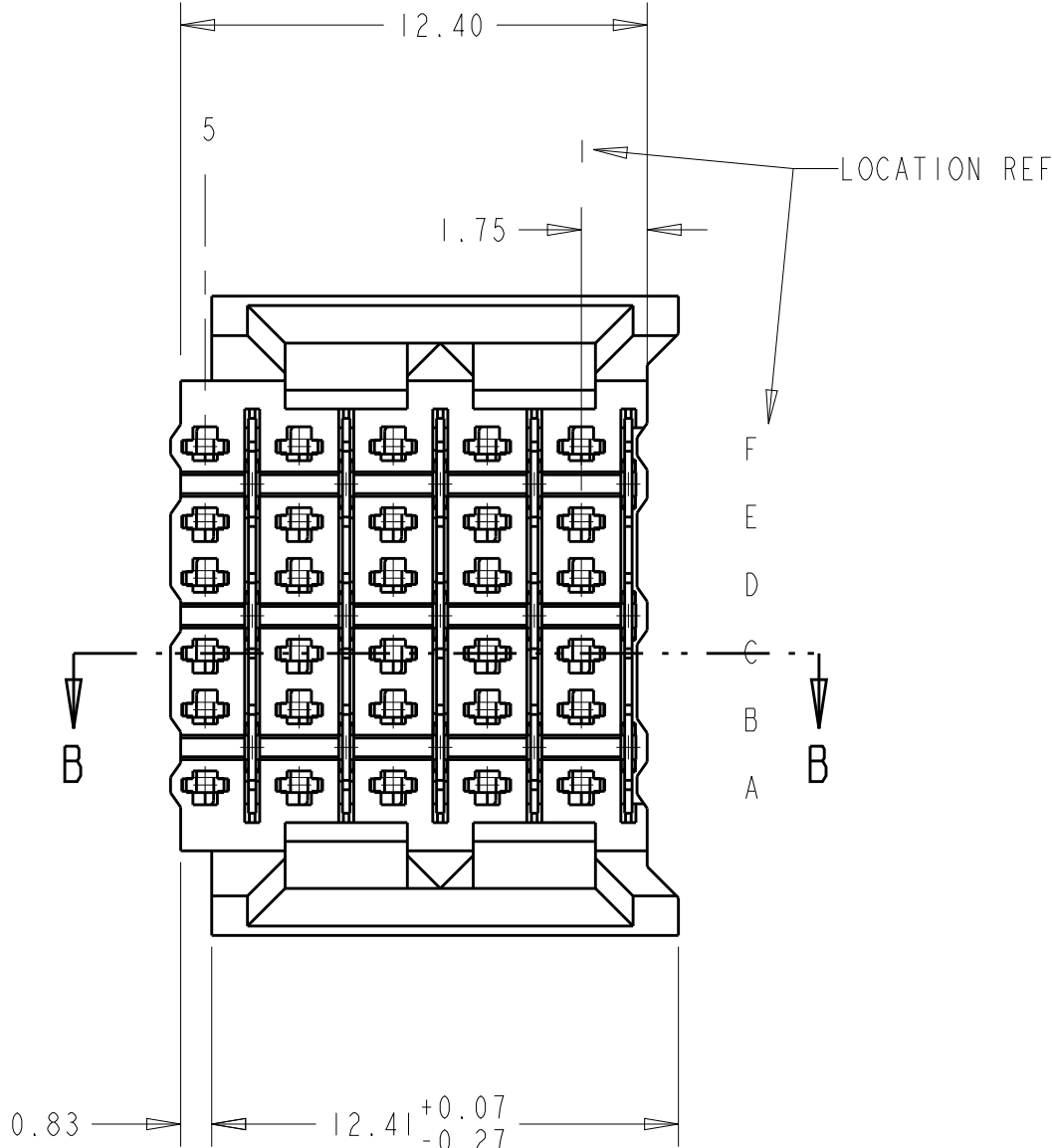
APPLICATION SEATING HEIGHT TO PRINTED CIRCUIT BOARD
- 8

DATUMS AND BASIC DIMENSIONS ESTABLISHED BY CUSTOMER
- 9

CONTACT AREA LUBRICATED WITH BELLCORE APPROVED LUBRICANT  
TECHNICAL REFERENCE: GR-1217-CORE, ISSUE 1, NOVEMBER 1995



SECTION B-B



RECOMMENDED  
PRINTED CIRCUIT BOARD  
LAYOUT  
COMPONENT SIDE OF PRINTED CIRCUIT BOARD

5.50	9.7	5120732-2
5.50	8.2	5120732-1
M	L	PART NUMBER

THIS DRAWING IS A CONTROLLED DOCUMENT.		DWN B. CARBO	07DEC04	<b>TE</b> TE Connectivity	
DIMENSIONS:		CHK R. PATTERSON	07DEC04		
mm	TOLERANCES UNLESS OTHERWISE SPECIFIED:	APVD R. PATTERSON	07DEC04	NAME	
	0 PLC ±	PRODUCT SPEC		HEADER ASSEMBLY, 30 POSITION, 6 ROW, BACKPLANE CONNECTOR, Z-PACK HS3	
	1 PLC ±	APPLICATION SPEC			
	2 PLC ±0.13	WEIGHT		SIZE	
	3 PLC ±0.05			A1	
	4 PLC ±			CAGE CODE	
MATERIAL	FINISH			00779	
HOUSING: 3				DRAWING NO	
CONTACTS: 2	SIGNAL CONTACT: 4	CUSTOMER DRAWING		5120732	
				RESTRICTED TO	
				SCALE	
				5:1	
				SHEET	
				1	
				OF	
				1	
				REV	
				B	