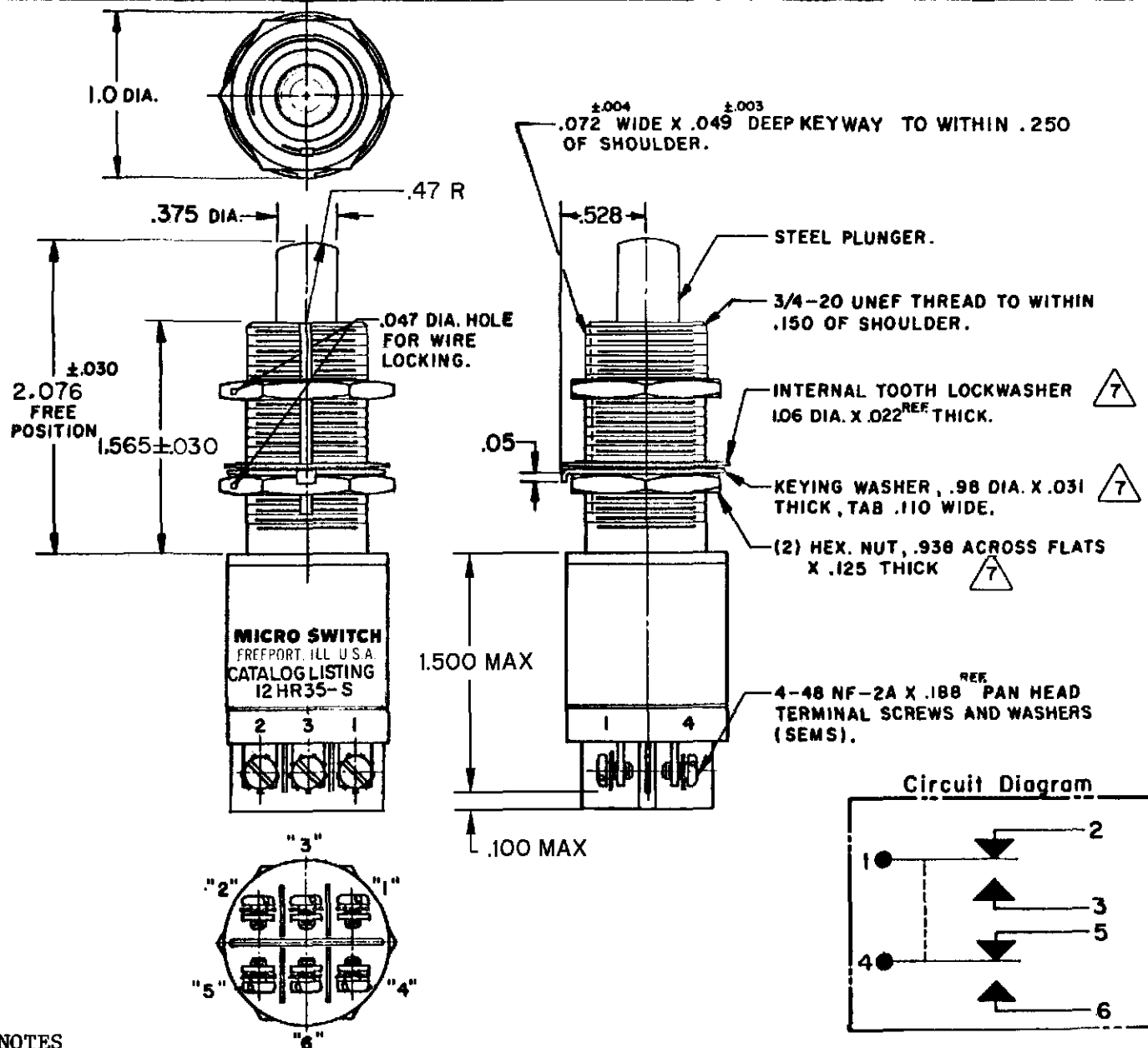


FED. MFG. CODE 91020

CATALOG LISTING

12 HR 35-S

SWITCH-ENCLOSED



NOTES

- 1 FOR OPERATION IN TEMPERATURES OF -85°F TO +599°F
2 SWITCH SEALED PER MIL-PRF-8805 SYMBOL 5 SWITCH CHAMBER. WATERTIGHT TEST NOT APPLICABLE
3 TERMINAL IDENTIFICATION IS SHOWN ON SWITCH ABOVE TERMINALS
4 COINCIDENCE OF OPERATING AND RELEASING POINTS .005 INCH OF PLUNGER TRAVEL
5 ALL EXPOSED PARTS ARE CORROSION RESISTANT
6 CIRCUIT DIAGRAM PERMANENTLY MARKED ON SWITCH HOUSING
7 HARDWARE MAY BE PACKAGED UNASSEMBLED PER MIL-PRF-8805

THIS DRAWING COVERS A PROPRIETARY ITEM AND IS THE PROPERTY OF MICRO SWITCH, A DIVISION OF HONEYWELL. THIS DRAWING IS NOT TO BE COPIED OR USED WITHOUT THE APPROVAL OF MICRO SWITCH.

CHARACTERISTICS	ELECTRICAL DATA	SCALE FULL
OPERATING FORCE ——— 6-12 LBS	CONTACT ARRANGEMENT	DO NOT SCALE PRINT
FULL OVETRAVEL FORCE ——— 35 LBS MAX	S P D T (2)	UNLESS OTHERWISE NOTED
RELEASE FORCE ——— 5 LBS MIN	28 VOLTS DC RATING (EACH CIRCUIT)	DIMENSIONS ARE IN INCHES
PRETRAVEL ——— .050 MAX	INDUCTIVE ——— 2 AMP	TOLERANCES ARE:
DIFFERENTIAL TRAVEL ——— .015 MAX	RESISTIVE ——— 5 AMP	ONE PLACE (.0) ±.030
OVERTRAVEL ——— .375 MIN		TWO PLACE (.00) ±.015
		THREE PLACE (.000) ±.005
		ANGLES ±
		WEIGHT 5 OZ MAX

O-50378-1A		RASTER		DRAWN		CATALOG LISTING		M		I2HR35-S		PAGE 1 OF 1		REPLACES	
						ISSUE		11				JAF		14 DEC 98	
						REVISIONS						CHECK		RELEASE NO. SR 12984	
						A SRI 2984						CHECK		28 AUG 67	
						LEB						CHECK		28 AUG 67	
						B CO23311						CHECK		28 AUG 67	
						M B F						CHECK		28 AUG 67	
						6 OCT 67						CHECK		28 AUG 67	
						C CO26535						CHECK		28 AUG 67	
						RER						CHECK		28 AUG 67	
						10 NOV 69						CHECK		28 AUG 67	
						D CO						CHECK		28 AUG 67	
						27058						CHECK		28 AUG 67	
						DAW						CHECK		28 AUG 67	
						7 MAR 70						CHECK		28 AUG 67	
						E CO29661						CHECK		28 AUG 67	
						6M						CHECK		28 AUG 67	
						4 DEC 71						CHECK		28 AUG 67	
						F CO31481						CHECK		28 AUG 67	
						RER						CHECK		28 AUG 67	
						3 JAN 73						CHECK		28 AUG 67	
						G CO47573						CHECK		28 AUG 67	
						TSM						CHECK		28 AUG 67	
						6 JULY 80						CHECK		28 AUG 67	
						H CO47277						CHECK		28 AUG 67	
						JAP						CHECK		28 AUG 67	
						J JAN 81						CHECK		28 AUG 67	
						J CO39991						CHECK		28 AUG 67	
						MPO						CHECK		28 AUG 67	
						14 DEC 98						CHECK		28 AUG 67	
						K 203609						CHECK		28 AUG 67	
						CSL						CHECK		28 AUG 67	
						3 AUG 01						CHECK		28 AUG 67	

MICRO SWITCH

FREERPORT ILLINOIS, U.S.A.
A DIVISION OF HONEYWELL

FED. MFG. CODE 91928

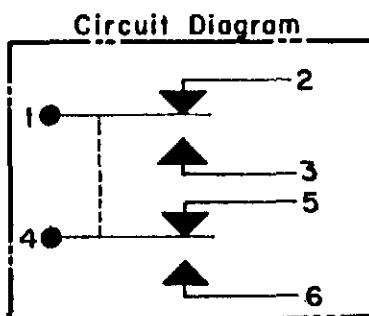
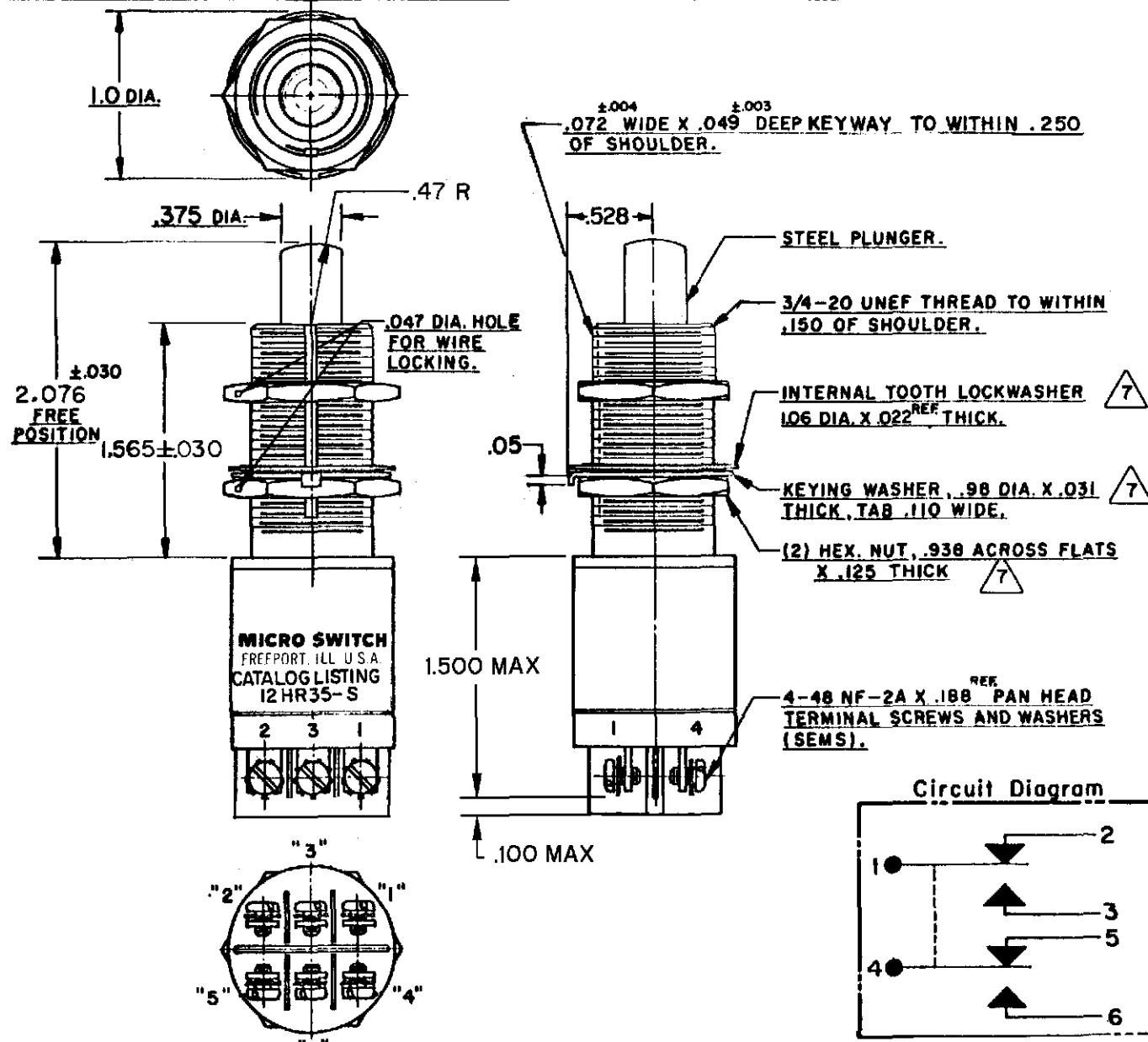
SWITCH-ENCLOSED

CATALOG LISTING

12 HR35-S

12HR35-S
PAGE 1 OF 1
M
DRAWING NUMBER
10
ISSUE
10
REVISIONS
A SR12984
LEB
24 AUG 67
B CO23311
MBF
6 OCT 67
C CO26535
RER
10 NOV 69
D CO
27058
DAW
7 MAR 70
E CO29661
SM
4 DEC 71
F CO31481
RER
3 JAN 73
G CO47573
TSM
6 JULY 80
H CO47277
JAP
1 JAN 81
J CO93991
MPO
14 DEC 98
FORMTEK
O-90378-1A

REPLACES
RELEASE NO. SR12984
14 DEC 98
JAF
CHECK
MRA
28 AUG 67
24 AUG 67
JSD
22 AUG 67
CHECK
L E B



- NOTES**
- FOR OPERATION IN TEMPERATURES OF -85°F TO +599°F
 - SWITCH SEALED PER MIL-S-8805 SYMBOL 5 SWITCH CHAMBER. WATERTIGHT TEST NOT APPLICABLE
 - TERMINAL IDENTIFICATION IS SHOWN ON SWITCH ABOVE TERMINALS
 - COINCIDENCE OF OPERATING AND RELEASING POINTS .005 INCH OF PLUNGER TRAVEL
 - ALL EXPOSED PARTS ARE CORROSION RESISTANT
 - CIRCUIT DIAGRAM PERMANENTLY MARKED ON SWITCH HOUSING
 - HARDWARE MAY BE PACKAGED UNASSEMBLED PER MIL-S-8805

THIS DRAWING COVERS A PROPRIETARY ITEM AND IS THE PROPERTY OF MICRO SWITCH, A DIVISION OF HONEYWELL. THIS DRAWING IS NOT TO BE COPIED OR USED WITHOUT THE APPROVAL OF MICRO SWITCH.

CHARACTERISTICS	ELECTRICAL DATA	SCALE FULL
OPERATING FORCE — 6-12 LBS	CONTACT ARRANGEMENT S P D T (2)	DO NOT SCALE PRINT
FULL OVETRAVEL FORCE — 35 LBS MAX	28 VOLTS DC RATING (EACH CIRCUIT)	UNLESS OTHERWISE NOTED
RELEASE FORCE — 5 LBS MIN	INDUCTIVE — 5 AMP	DIMENSIONS ARE IN INCHES
PRETRAVEL — .050 MAX	RESISTIVE — 2 AMP	TOLERANCES ARE:
DIFFERENTIAL TRAVEL — .015 MAX		ONE PLACE (.0) ±.030
OVETRAVEL — .375 MIN		TWO PLACE (.00) ±.015
		THREE PLACE (.000) ±.008
		ANGLES ±
		WEIGHT 5 OZ MAX