



Low-Voltage, SOT23 μ P Supervisors with Power Fail In/Out, Manual Reset, and Watchdog Timer

MAX6701-MAX6708

General Description

The MAX6701-MAX6708 microprocessor (μ P) supervisory circuits reduce the complexity and components required to monitor power-supply functions in μ P systems. These devices significantly improve system reliability and accuracy compared to separate ICs or discrete components.

The MAX6701-MAX6708 family provides four functions: a reset output during power-up, power-down and brownout conditions; an independent watchdog output that goes low if the watchdog input has not been toggled within 1.6s; a 0.62V threshold detector for power-fail warning; and an active-low manual reset input.

The MAX6701-MAX6708 family offers several pinout options to accommodate a variety of multivoltage microprocessor supervision applications.

The MAX6701/MAX6702/MAX6703 monitor three supply voltages (one fixed threshold and two adjustable) to drive a single reset output and include a manual reset input and a watchdog timer with an independent output. The MAX6704 monitors a single supply voltage to drive complementary reset outputs and includes an independent adjustable power fail in/power fail out comparator, a manual reset input, and a reset based watchdog timer. The MAX6705/MAX6706/MAX6707 monitor a single supply voltage to drive a single reset output and include an independent adjustable power fail in/power fail out comparator, a manual reset input, and a watchdog timer with an independent output. The MAX6708 is the same as the MAX6704 but without the watchdog timer function.

Applications

Computers
Controllers
Intelligent Instruments
Automotive Systems
Critical μ P Power Monitoring
White Goods
Networking
Telecommunications

Typical Operating Circuit appears at end of data sheet.

Features

- ◆ Small 8-Pin SOT23 Package
- ◆ Precision Monitoring of +5.0V, +3.3V, +3.0V, +2.5V Supply Voltages
- ◆ 140ms Reset Timeout Delay
- ◆ Power Fail Input with Independent Output; Monitors Inputs Down to 0.62V (MAX6704-MAX6708)
- ◆ Dual Adjustable Reset Input for Triple Voltage Monitoring (MAX6701/MAX6702/MAX6703)
- ◆ 1.6s Watchdog Timeout Period (MAX6701-MAX6707)
- ◆ Independent Watchdog Output (MAX6701/MAX6702/MAX6703/MAX6705/MAX6706/MAX6707)
- ◆ Manual Reset Input
- ◆ Four Reset Output Stage Options
 - Active-Low Push-Pull (MAX6701, MAX6705)
 - Active-Low Open-Drain (MAX6703, MAX6707)
 - Active-High Push-Pull (MAX6702, MAX6706)
 - Dual Active-Low/High Push-Pull (MAX6704, MAX6708)
- ◆ Guaranteed Reset Valid to $V_{CC} = 1V$
- ◆ Immune to Short Negative V_{CC} Transients
- ◆ Low Cost, Few External Components

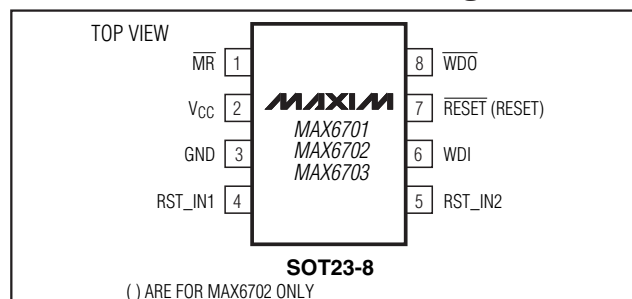
Ordering Information

| PART | TEMP. RANGE | PIN-PACKAGE |
|--------------|-----------------|-------------|
| MAX6701_KA-T | -40°C to +125°C | SOT23-8 |
| MAX6702_KA-T | -40°C to +125°C | SOT23-8 |
| MAX6703_KA-T | -40°C to +125°C | SOT23-8 |

Insert the desired suffix letter (from the Threshold Suffix Guide table) into the blank to complete the part number. All devices must be ordered in increments of 2500 pieces. Sample stock is typically held on standard versions only. Contact factory for availability.

Ordering Information continued at end of data sheet.

Pin Configurations



Pin Configurations continued at end of data sheet.



Maxim Integrated Products 1

For price, delivery, and to place orders, please contact Maxim Distribution at 1-888-629-4642, or visit Maxim's website at www.maxim-ic.com.

Low-Voltage, SOT23 μ P Supervisors with Power Fail In/Out, Manual Reset, and Watchdog Timer

ABSOLUTE MAXIMUM RATINGS

V_{CC}-0.3V to +6.0V
 Open-Drain RESET, WDO, PFO-0.3V to +6.0V
 Push-Pull RESET, RESET, WDO, PFO-0.3V to (V_{CC} + 0.3V)
 MR, WDI, PFI, RST_IN1, RST_IN2-0.3V to (V_{CC} + 0.3V)
 Input Current (V_{CC})20mA
 Output Current (RESET, RESET, PFO, WDO)20mA

Continuous Power Dissipation (T_A = +70°C)
 8-Pin SOT23 (derate 8.9mW/°C above +70°C)714mW
 Operating Temperature Range-40°C to +125°C
 Junction Temperature+150°C
 Storage Temperature Range-65°C to +150°C
 Lead Temperature (soldering, 10s)+300°C

Stresses beyond those listed under "Absolute Maximum Ratings" may cause permanent damage to the device. These are stress ratings only, and functional operation of the device at these or any other conditions beyond those indicated in the operational sections of the specifications is not implied. Exposure to absolute maximum rating conditions for extended periods may affect device reliability.

ELECTRICAL CHARACTERISTICS

(V_{CC} = +4.25V to +5.5V for L/M versions, V_{CC} = +2.55V to +3.6V for the T/S/R versions, V_{CC} = +2.1V to +2.75V for the Z/Y versions. T_A = -40°C to +125°C, unless otherwise specified. Typical values are at T_A = +25°C.) (Note 1)

| PARAMETER | SYMBOL | CONDITIONS | | MIN | TYP | MAX | UNITS |
|--|------------------|--|----------------------------------|------|------|------|--------|
| Operating Voltage Range | V _{CC} | T _A = 0°C to +125°C | | 1.0 | | 5.5 | V |
| | | T _A = -40°C to +125°C | | 1.2 | | 5.5 | |
| Supply Current MR Unconnected | I _{CC} | V _{CC} < 5.5V, no load | | | 12 | 25 | μA |
| | | V _{CC} < 3.6V, no load | | | 9 | 20 | |
| | | V _{CC} < 3.6V, no load (MAX6708 only) | | | 6 | 20 | |
| V _{CC} Reset Threshold (V _{CC} falling) | V _{TH} | MAX670_L | T _A = -40°C to +85°C | 4.50 | 4.63 | 4.75 | V |
| | | | T _A = -40°C to +125°C | 4.47 | | 4.78 | |
| | | MAX670_M | T _A = -40°C to +85°C | 4.25 | 4.38 | 4.50 | |
| | | | T _A = -40°C to +125°C | 4.22 | | 4.53 | |
| | | MAX670_T | T _A = -40°C to +85°C | 3.00 | 3.08 | 3.15 | |
| | | | T _A = -40°C to +125°C | 2.97 | | 3.17 | |
| | | MAX670_S | T _A = -40°C to +85°C | 2.85 | 2.93 | 3.00 | |
| | | | T _A = -40°C to +125°C | 2.83 | | 3.02 | |
| | | MAX670_R | T _A = -40°C to +85°C | 2.55 | 2.63 | 2.70 | |
| | | | T _A = -40°C to +125°C | 2.53 | | 2.72 | |
| | | MAX670_Z | T _A = -40°C to +85°C | 2.25 | 2.32 | 2.38 | |
| | | | T _A = -40°C to +125°C | 2.24 | | 2.40 | |
| | | MAX670_Y | T _A = -40°C to +85°C | 2.12 | 2.19 | 2.25 | |
| | | | T _A = -40°C to +125°C | 2.11 | | 2.27 | |
| Reset Threshold Temperature Coefficient | ΔV _{TH} | | | | 60 | | ppm/°C |
| V _{CC} to Reset Output Delay | | V _{CC} falling at 10mV/μs | | | 12 | | μs |
| Reset Timeout Period | t _{RP} | | T _A = -40°C to +85°C | 140 | 200 | 280 | ms |
| | | | T _A = -40°C to +125°C | 120 | | 300 | |
| PFI, RST_IN1, RST_IN2 Threshold | | V _{CC} = 1.8V to 5.5V | T _A = -40°C to +85°C | 602 | 618 | 634 | mV |
| | | | T _A = -40°C to +125°C | 593 | | 642 | |
| PFI, RST_IN1, RST_IN2 Hysteresis | | | | | 6 | | mV |

Low-Voltage, SOT23 μ P Supervisors with Power Fail In/Out, Manual Reset, and Watchdog Timer

ELECTRICAL CHARACTERISTICS (continued)

(V_{CC} = +4.25V to +5.5V for L/M versions, V_{CC} = +2.55V to +3.6V for the T/S/R versions, V_{CC} = +2.1V to +2.75V for the Z/Y versions. T_A = -40°C to +125°C, unless otherwise specified. Typical values are at T_A = +25°C.) (Note 1)

| PARAMETER | SYMBOL | CONDITIONS | | MIN | TYP | MAX | UNITS |
|--|------------------|---|----------------------------------|-----------------------|-----|------|-------|
| PFI, RST_IN1, RST_IN2 Leakage Current | | (Note 2) | T _A = -40°C to +85°C | -50 | | +50 | nA |
| | | | T _A = -40°C to +125°C | -200 | | +200 | |
| PFI to PFO Delay | t _{PF} | | | 1 | | | μs |
| MR Input Voltage | V _{IL} | | | 0.3 x V _{CC} | | | V |
| | V _{IH} | | | 0.7 x V _{CC} | | | |
| \overline{MR} Minimum Input Pulse | | | | 1 | | | μs |
| \overline{MR} Glitch Rejection | | | | 100 | | | ns |
| \overline{MR} to Reset Delay | t _{MD} | | | 200 | | | ns |
| \overline{MR} Pullup Resistance | | | | 25 | 50 | 75 | kΩ |
| Watchdog Timeout Period | t _{WD} | T _A = -40°C to +85°C | | 1.12 | 1.6 | 2.4 | s |
| | | T _A = -40°C to +125°C | | 0.96 | | 2.52 | |
| WDI Pulse Width | t _{WDI} | (Note 2) | | 50 | | | ns |
| WDI Input Voltage | V _{IL} | | | 0.3 x V _{CC} | | | V |
| | V _{IH} | | | 0.7 x V _{CC} | | | |
| WDI Input Current | I _{WDI} | WDI = 0 or V _{CC} | | -1 | | +1 | μA |
| \overline{RESET} , \overline{WDO} Output Low (Push-Pull or Open-Drain) | V _{OL} | V _{CC} ≥ 1.0V, I _{SINK} = 50μA, output asserted (T _A = 0°C to +125°C) | | 0.3 | | | V |
| | | V _{CC} ≥ 1.2V, I _{SINK} = 100μA, output asserted | | 0.3 | | | |
| | | V _{CC} ≥ 2.55V, I _{SINK} = 1.2mA, output asserted | | 0.3 | | | |
| | | V _{CC} ≥ 4.25V, I _{SINK} = 3.2mA, output asserted | | 0.4 | | | |
| PFO Output Low (Push-Pull or Open-Drain) | V _{OL} | V _{CC} ≥ 1.80V, I _{SINK} = 200μA, output asserted | | 0.3 | | | V |
| | | V _{CC} ≥ 2.55V, I _{SINK} = 1.2mA, output asserted | | 0.3 | | | |
| | | V _{CC} ≥ 4.25V, I _{SINK} = 3.2mA, output asserted | | 0.4 | | | |
| \overline{RESET} , \overline{WDO} , \overline{PFO} Output High (Push-Pull Only) | V _{OH} | V _{CC} ≥ 2.7V, I _{SINK} = 500μA, output not asserted | | 0.8 x V _{CC} | | | V |
| | | V _{CC} ≥ 4.75V, I _{SINK} = 800μA, output not asserted | | 0.8 x V _{CC} | | | |
| \overline{RESET} , \overline{WDO} , \overline{PFO} Output Open-Drain Leakage Current | I _{LKG} | V _{CC} > V _{TH} , output not asserted | | 1.0 | | | μA |
| RESET Output High (Push-Pull Only) | V _{OH} | V _{CC} ≥ 1.0V, I _{SOURCE} = 1μA, reset asserted (T _A = 0°C to +125°C) | | 0.8 x V _{CC} | | | V |
| | | V _{CC} ≥ 1.2V, I _{SOURCE} = 50μA, reset asserted | | 0.8 x V _{CC} | | | |
| | | V _{CC} ≥ 2.55V, I _{SOURCE} = 500μA, reset asserted | | 0.8 x V _{CC} | | | |
| | | V _{CC} ≥ 4.25V, I _{SOURCE} = 800μA, reset asserted | | 0.8 x V _{CC} | | | |

Low-Voltage, SOT23 μ P Supervisors with Power Fail In/Out, Manual Reset, and Watchdog Timer

ELECTRICAL CHARACTERISTICS (continued)

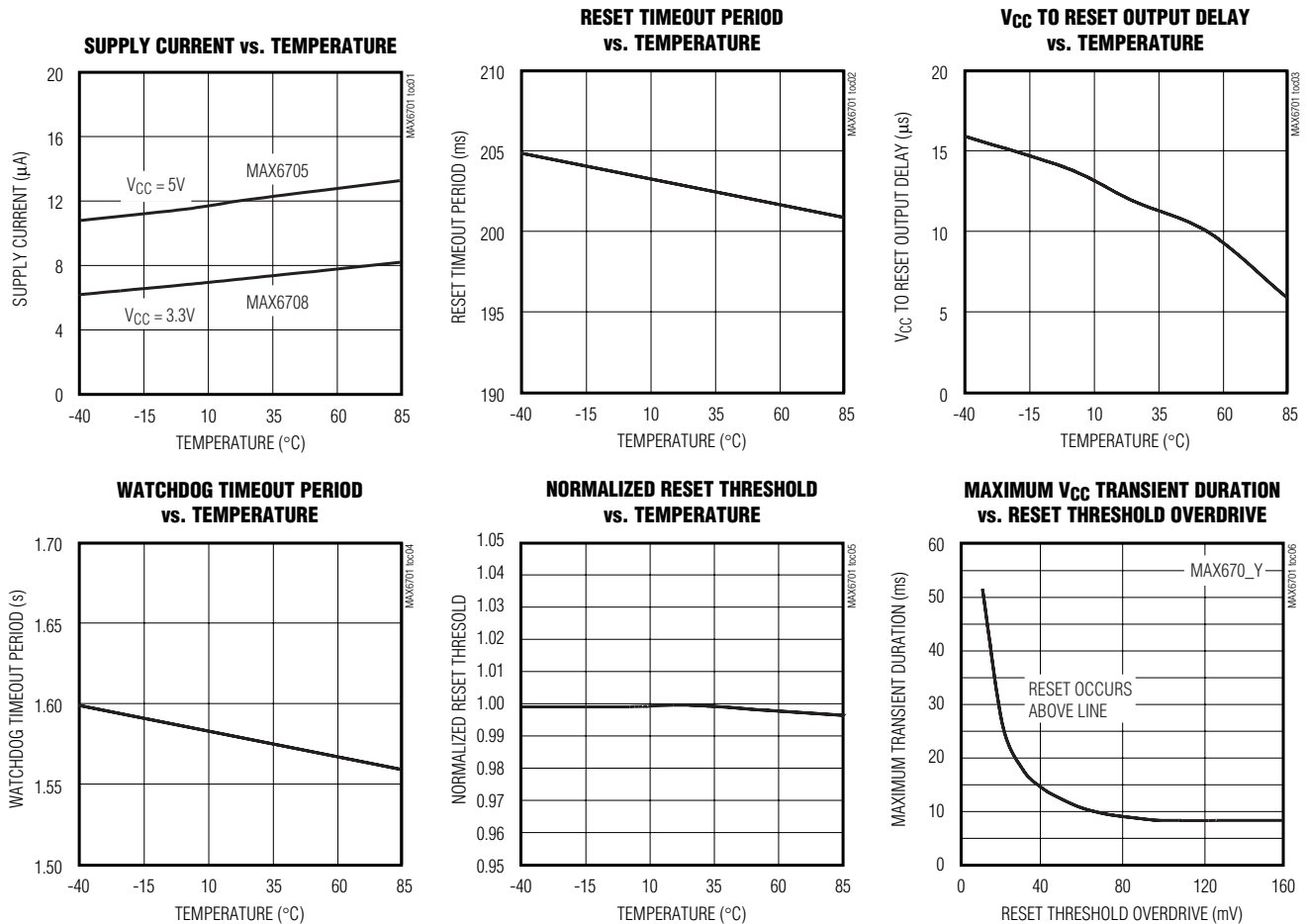
(V_{CC} = +4.25V to +5.5V for L/M versions, V_{CC} = +2.55V to +3.6V for the T/S/R versions, V_{CC} = +2.1V to +2.75V for the Z/Y versions. T_A = -40°C to +125°C, unless otherwise specified. Typical values are at T_A = +25°C.) (Note 1)

| PARAMETER | SYMBOL | CONDITIONS | MIN | TYP | MAX | UNITS |
|-----------------------------------|----------|---|-----|-----|-----|-------|
| RESET Output Low (Push-Pull Only) | V_{OL} | $V_{CC} \geq 2.7V$, $I_{SINK} = 1.2mA$, reset not asserted | | | 0.3 | V |
| | | $V_{CC} \geq 4.75V$, $I_{SINK} = 3.2mA$, reset not asserted | | | 0.4 | |

Note 1: Over temperature limits are guaranteed by design and not production tested. Devices are tested at T_A = +25°C.
Note 2: Guaranteed by design. Not production tested.

Typical Operating Characteristics

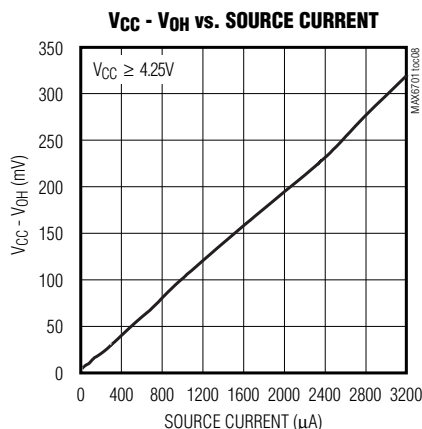
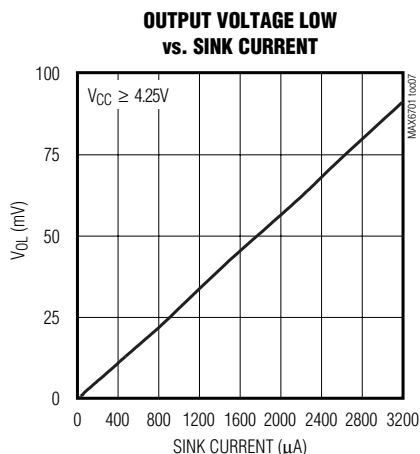
(T_A = +25°C, unless otherwise noted.)



Low-Voltage, SOT23 μ P Supervisors with Power Fail In/Out, Manual Reset, and Watchdog Timer

Typical Operating Characteristics (continued)

($T_A = +25^\circ\text{C}$, unless otherwise noted.)



Pin Description

| MAX6701 MAX6702 MAX6703 | MAX6704 | MAX6705 MAX6706 MAX6707 | MAX6708 | NAME | FUNCTION |
|-------------------------------|---------|-------------------------------|---------|-------------------------|--|
| 1 | 1 | 1 | 1 | $\overline{\text{MR}}$ | Active-Low, Manual Reset Input, Internal 50k Ω Pullup to V_{CC} . Pull low to force a reset. Reset remains active as long as $\overline{\text{MR}}$ is low and for the reset timeout period after $\overline{\text{MR}}$ goes high. Leave unconnected or connect to V_{CC} if unused. |
| 2 | 2 | 2 | 2 | V_{CC} | Supply Voltage for MAX6701-MAX6708 and Input for Primary Reset Threshold Monitor. Push-pull outputs are powered by V_{CC} . |
| 3 | 3 | 3 | 3 | GND | Ground |
| — | 4 | 4 | 4 | PFI | Power Fail Voltage Monitor Input. High-impedance input for internal power fail comparator. Connect this pin to an external resistive divider network to set the reset threshold voltage; 0.62V (typ) threshold. Connect to GND or V_{CC} when not used. |
| — | 5 | 5 | 5 | $\overline{\text{PFO}}$ | Power Fail Monitor Output. Open-drain or push-pull active-low. $\overline{\text{PFO}}$ goes low when PFI is less than 0.62V. |
| 6 | 6 | 6 | — | WDI | Watchdog Input. If WDI remains high or low for longer than the watchdog timeout period, the internal watchdog timer runs out and $\overline{\text{WDO}}$ is asserted on the MAX6704 (resets are asserted for the reset timeout period). The internal watchdog timer clears whenever reset is asserted, or WDI sees a rising or falling edge. The watchdog function cannot be disabled. |
| — | — | — | 6 | N.C. | No Connection |

Low-Voltage, SOT23 μ P Supervisors with Power Fail In/Out, Manual Reset, and Watchdog Timer

Pin Description (continued)

| MAX6701 MAX6702 MAX6703 | MAX6704 | MAX6705 MAX6706 MAX6707 | MAX6708 | NAME | FUNCTION |
|-------------------------------|---------|-------------------------------|---------|---------------------------|--|
| 7 | 7 | 7 | 7 | $\overline{\text{RESET}}$ | Active-Low Reset Output (Open-Drain or Push-Pull). $\overline{\text{RESET}}$ changes from high to low when the V_{CC} input drops below the selected reset threshold (or RST_IN1/ RST_IN2 for the MAX6701/MAX6702/MAX6703), $\overline{\text{MR}}$ is pulled low, or the watchdog triggers a reset (MAX6704 only). $\overline{\text{RESET}}$ remains low for the reset timeout period after the reset conditions are terminated. |
| 8 | — | 8 | — | $\overline{\text{WDO}}$ | Active-Low Watchdog Output (Open-Drain or Push-Pull). $\overline{\text{WDO}}$ is asserted whenever the watchdog times out and does not deassert until the watchdog is cleared. $\overline{\text{WDO}}$ also asserts when V_{CC} or RST_IN_ are below reset thresholds or $\overline{\text{MR}}$ is pulled low. $\overline{\text{WDO}}$ deasserts after a valid WDI transition (without a reset timeout period). |
| 7* | 8 | 7* | 8 | RESET | Active-High Reset Output (Push-Pull). RESET changes from low to high when the V_{CC} input drops below the selected reset threshold (or RST_IN1/RST_IN2 for MAX6701/MAX6702/MAX6703), $\overline{\text{MR}}$ is pulled low, or the watchdog triggers a reset (MAX6704 only). RESET remains high for the reset timeout period after the reset conditions are terminated. *RESET active-high for the MAX6702/MAX6706. |
| 4 | — | — | — | RST_IN1 | Input for User Adjustable V_{CC2} Monitor. High-impedance input for second internal reset comparator. Connect this pin to an external resistive-divider network to set the reset threshold voltage; 0.62V (typ) threshold. Connect to V_{CC} when not used. Reset is asserted when either V_{CC} , RST_IN1, or RST_IN2 are below threshold. |
| 5 | — | — | — | RST_IN2 | Input for User Adjustable V_{CC3} Monitor. High-impedance input for third internal reset comparator. Connect this pin to an external resistive-divider network to set the reset threshold voltage; 0.62V (typ) threshold. Connect to V_{CC} when not used. Reset is asserted when either V_{CC} , RST_IN1, or RST_IN2 are below threshold. |

Detailed Description

Reset Output

A microprocessor's (μ P's) reset input starts the μ P in a known state. The MAX6701–MAX6708 assert reset during power-up and prevent code execution errors during power-down or brownout conditions.

On power-up, once V_{CC} reaches 1V, $\overline{\text{RESET}}$ is a guaranteed logic low of 0.4V or less. As V_{CC} rises, $\overline{\text{RESET}}$

stays low. After V_{CC} rises above the reset threshold, an internal timer holds $\overline{\text{RESET}}$ low for about 200ms. $\overline{\text{RESET}}$ pulses low whenever V_{CC} dips below the reset threshold, including brownout conditions. If a brownout occurs in the middle of a previously initiated reset pulse, the pulse continues for at least another 140ms. On power-down, once V_{CC} falls below the reset threshold, $\overline{\text{RESET}}$ stays low and is guaranteed to be 0.4V or less, until V_{CC} drops below 1V.

Low-Voltage, SOT23 μ P Supervisors with Power Fail In/Out, Manual Reset, and Watchdog Timer

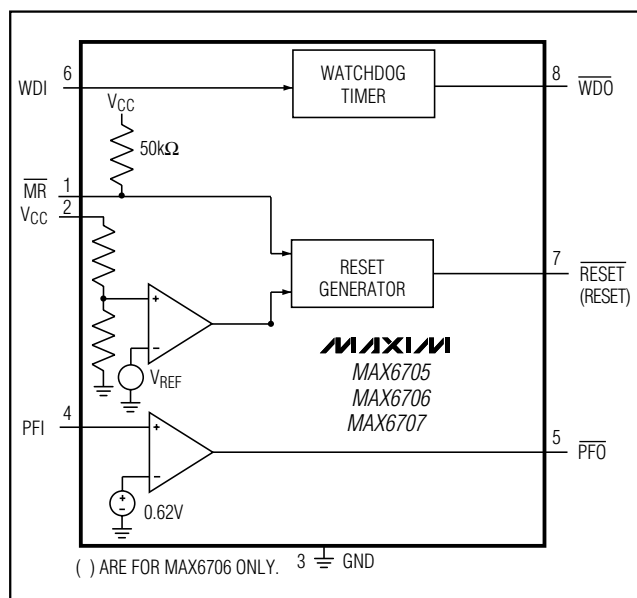


Figure 1. MAX6705/MAX6706/MAX6707 Block Diagram

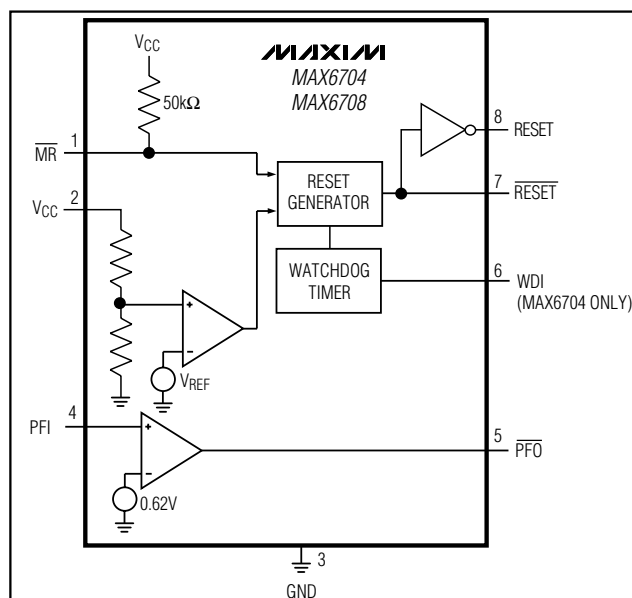


Figure 2. MAX6704/MAX6708 Block Diagram

The MAX6702/MAX6704/MAX6706/MAX6708 active-high RESET output is simply the complement of the RESET output, and is guaranteed to be valid with V_{CC} down to 1V. (See Figure 4.)

Watchdog Timer

The MAX6701-MAX6707 watchdog circuit monitors the μ P's activity. If the μ P does not toggle the watchdog input (WDI) within 1.6s, WDO goes low. When RESET is asserted, the watchdog timer stays cleared and does not count. As soon as reset is released, the timer will start counting. WDO deasserts after a valid transition is detected at WDI. Pulses as short as 50ns can be detected.

Typically, WDO will be connected to the nonmaskable interrupt (NMI) input of a μ P. When V_{CC} drops below the reset threshold, WDO will go low whether or not the watchdog timer has timed out yet. Normally this would trigger an NMI, but RESET goes low simultaneously, and thus overrides the NMI.

The MAX6704 watchdog circuit does not have an independent watchdog output (WDO). If the μ P does not toggle the watchdog input within 1.6s, the MAX6704 will assert a reset output pulse for the reset timeout period. (See Figure 5.)

Manual Reset

The manual reset input (MR) allows reset to be triggered by a pushbutton switch. The switch is effectively

debounced by the reset pulse width. MR is CMOS logic compatible, so it can be driven by an external logic line. MR can be used to force a watchdog timeout to generate a reset pulse in the MAX6701-MAX6708. Simply connect WDO to MR.

Power-Fail Comparator

The uncommitted power-fail comparator can be used for various purposes because its noninverting input and output are externally available. The inverting input is internally connected to a 0.62V reference. To build an early warning circuit for power failure, connect the PFI pin to a voltage divider (see *Typical Operating Circuit*). Choose the voltage-divider ratio so that the voltage at PFI falls below 0.62V just before the regulator drops out. Use PFO to interrupt the μ P so it can prepare for an orderly power-down. The low input current at this pin allows for large resistor values in the divider.

Reset-In Information

The MAX6701/MAX6702/MAX6703 include two adjustable reset inputs for monitoring up to a total of three system voltages (including V_{CC}). The thresholds for the monitored RST_IN supplies are externally set with resistor-divider networks (Figure 6). The reset output is asserted if any of the monitored supplies (V_{CC} , RST_IN1, or RST_IN2) go below its specified threshold and remain asserted for the reset timeout period after all supplies are above their thresholds.

Low-Voltage, SOT23 μ P Supervisors with Power Fail In/Out, Manual Reset, and Watchdog Timer

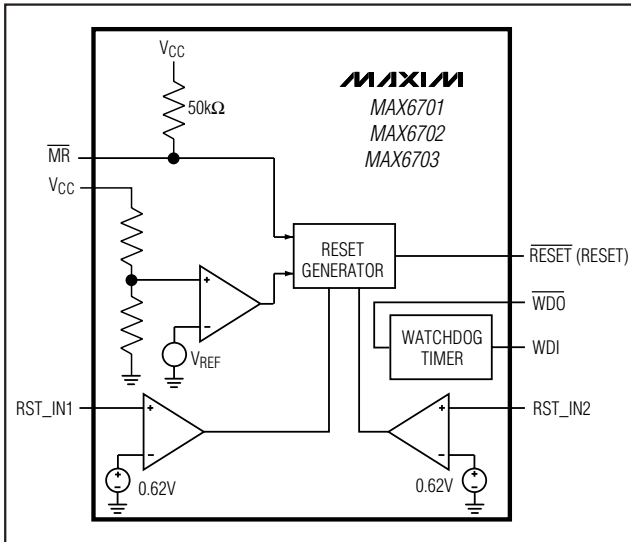


Figure 3. MAX6701/MAX6702/MAX6703 Block Diagram

Applications Information

Ensuring a Valid RESET Output Down to $V_{CC} = 0$

When V_{CC} falls below 1V, the MAX6701-MAX6708 RESET output no longer sinks current—it becomes an open circuit. High-impedance CMOS logic inputs can drift to undetermined voltages if left undriven. If a pull-down resistor is added to the RESET pin as shown in Figure 7, any stray charge or leakage currents will be drained to ground, holding RESET low. A resistor value (R_1) is not critical; 100k Ω is large enough not to load RESET and small enough to pull RESET to ground. This application works for push-pull output only (not for open-drain resets).

Monitoring Other System Voltages

Other systems can be monitored by connecting a voltage divider to PFI and adjusting the ratio appropriately. In noisy systems, a capacitor between PFI and GND will reduce the power-fail circuit's sensitivity to high-frequency noise on the line being monitored. Reset can be asserted on other voltages in addition to the V_{CC} supply line. Connect PFO to MR to initiate a reset output pulse when PFI drops below 0.62V. Figure 8 shows the MAX6701-MAX6708 configured to assert a reset output when the secondary supply falls below the reset threshold.

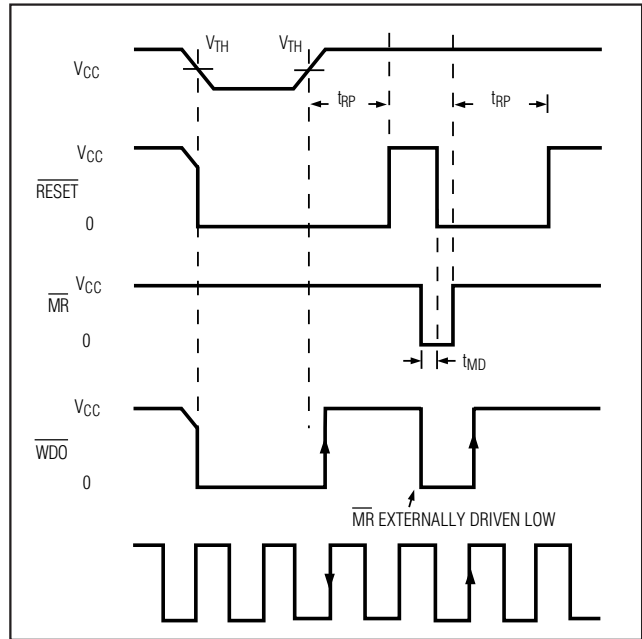


Figure 4. MAX6705/MAX6706/MAX6707 RESET, MR, WDO, and WDI Timing. The MAX6706 RESET output is the inverse of the RESET shown.

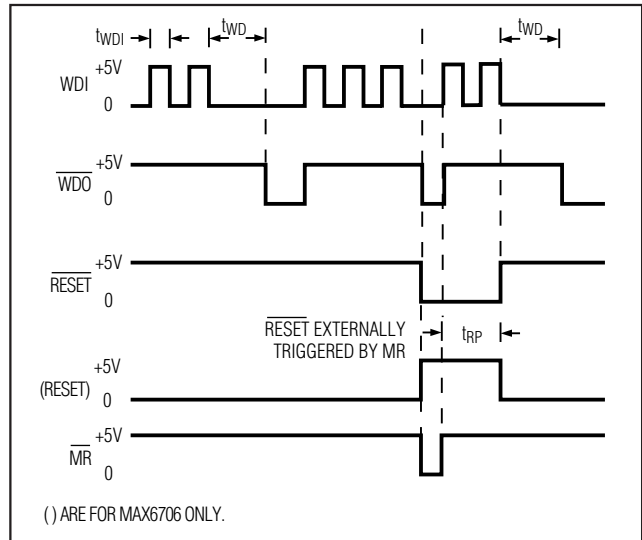


Figure 5. MAX6705/MAX6706/MAX6707 Watchdog Timing

Low-Voltage, SOT23 μ P Supervisors with Power Fail In/Out, Manual Reset, and Watchdog Timer

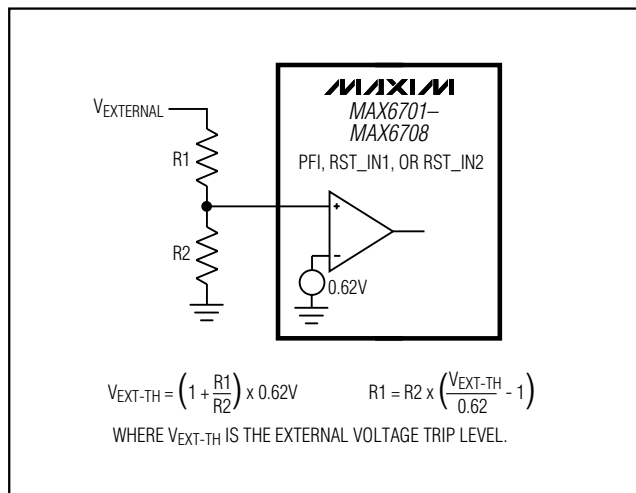


Figure 6. Calculating Adjustable Voltage Thresholds

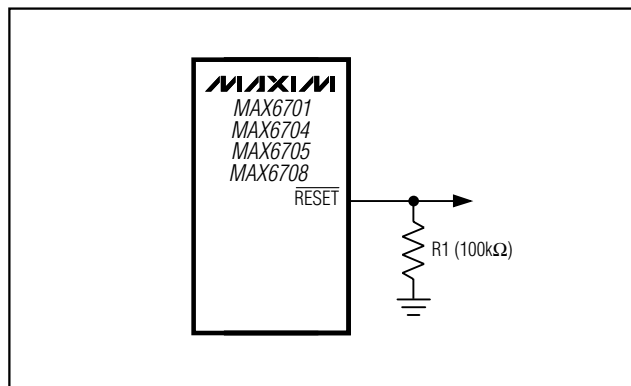


Figure 7. \overline{RESET} Valid to Ground Circuit

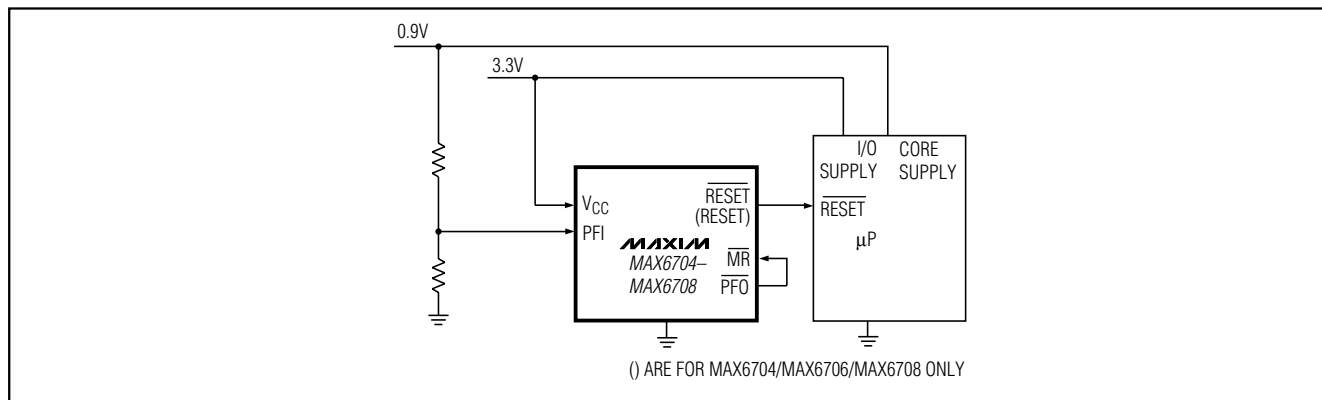


Figure 8. Monitoring Other System Voltages

Threshold Suffix Guide

| SUFFIX | RESET THRESHOLD (V) |
|----------|---------------------|
| L | 4.63 |
| M | 4.38 |
| T | 3.08 |
| S | 2.93 |
| R | 2.63 |
| Z | 2.32 |
| Y | 2.19 |

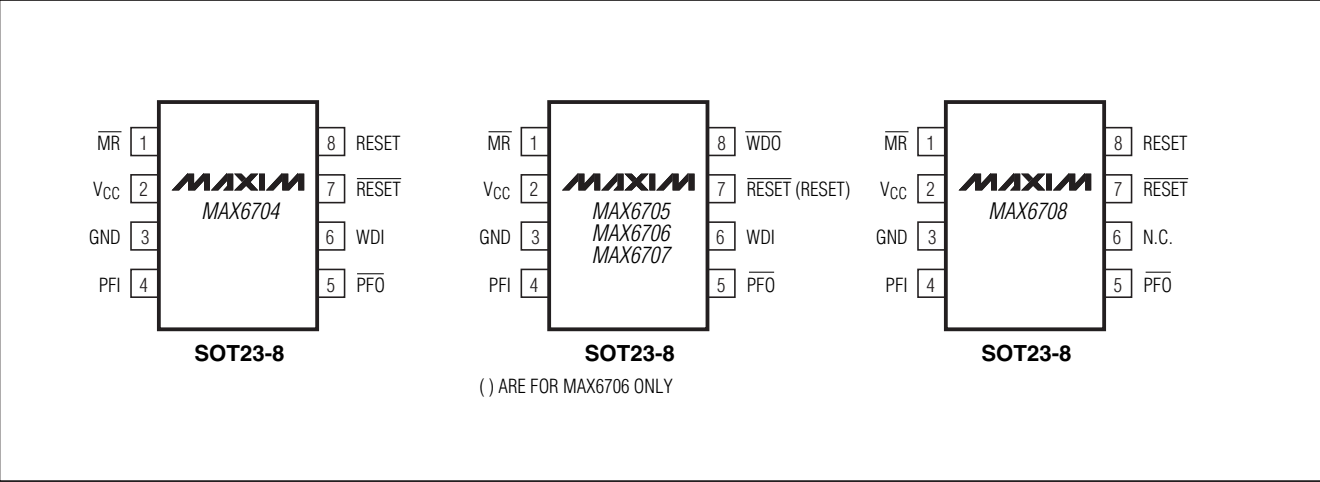
Bold indicates standard version.

Ordering Information (continued)

| PART | TEMP. RANGE | PIN-PACKAGE |
|---------------------|-----------------|-------------|
| MAX6704_KA-T | -40°C to +125°C | SOT23-8 |
| MAX6705_KA-T | -40°C to +125°C | SOT23-8 |
| MAX6706_KA-T | -40°C to +125°C | SOT23-8 |
| MAX6707_KA-T | -40°C to +125°C | SOT23-8 |
| MAX6708_KA-T | -40°C to +125°C | SOT23-8 |

Low-Voltage, SOT23 μ P Supervisors with Power Fail In/Out, Manual Reset, and Watchdog Timer

Pin Configurations (continued)



Selector Guide

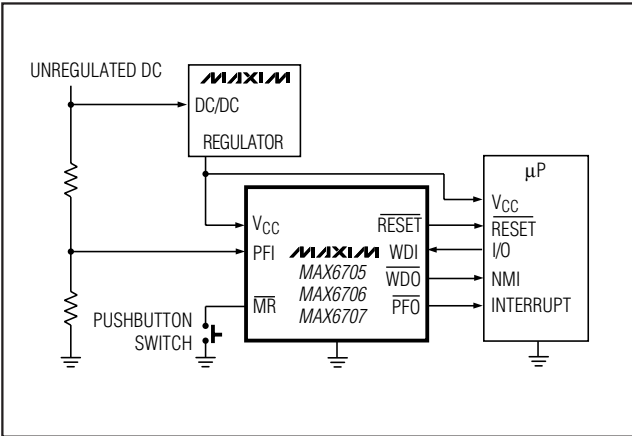
| PART | $\overline{\text{RESET}}$ PP-LOW | RESET PP-HIGH | $\overline{\text{RESET}}$ OD-LOW | WDI | $\overline{\text{WDO}}$ | PFI, $\overline{\text{PFO}}$ | RST_IN1, RST_IN2 |
|---------|-------------------------------------|------------------|-------------------------------------|-----|-------------------------|---------------------------------|---------------------|
| MAX6701 | ✓ | | | ✓ | ✓ PP | | ✓ |
| MAX6702 | | ✓ | | ✓ | ✓ PP | | ✓ |
| MAX6703 | | | ✓ | ✓ | ✓ OD | | ✓ |
| MAX6704 | ✓ | ✓ | | ✓ | | ✓ PP | |
| MAX6705 | ✓ | | | ✓ | ✓ PP | ✓ PP | |
| MAX6706 | | ✓ | | ✓ | ✓ PP | ✓ PP | |
| MAX6707 | | | ✓ | ✓ | ✓ OD | ✓ OD | |
| MAX6708 | ✓ | ✓ | | | | ✓ PP | |

PP = Push-Pull OD = Open-Drain

Chip Information

TRANSISTOR COUNT: 716
PROCESS: BiCMOS

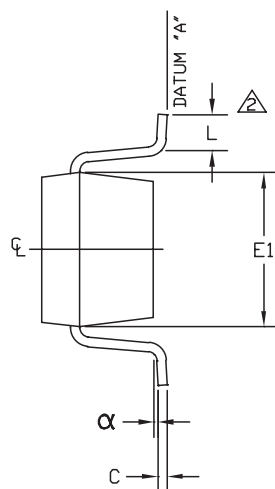
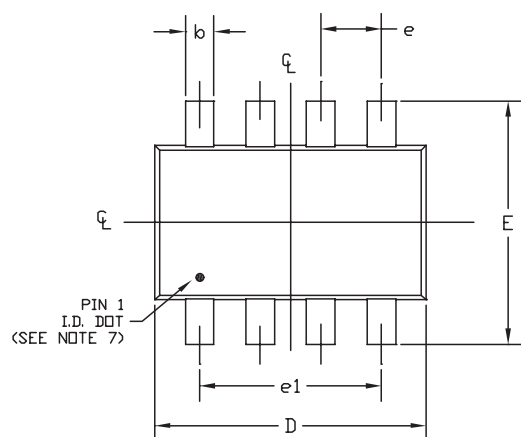
Typical Operating Circuit



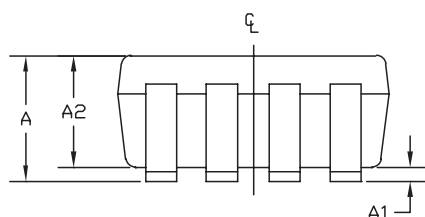
Low-Voltage, SOT23 μ P Supervisors with Power Fail In/Out, Manual Reset, and Watchdog Timer

Package Information

SOT23, 8L, EPS



| SYMBOL | MIN | MAX |
|----------|----------|------|
| A | 0.90 | 1.45 |
| A1 | 0.00 | 0.15 |
| A2 | 0.90 | 1.30 |
| b | 0.28 | 0.45 |
| C | 0.09 | 0.20 |
| D | 2.80 | 3.00 |
| E | 2.60 | 3.00 |
| E1 | 1.50 | 1.75 |
| L | 0.10 | 0.60 |
| e | 0.65 ref | |
| e1 | 1.95 ref | |
| α | 0° | 10° |



NOTE:

1. ALL DIMENSIONS ARE IN MILLIMETERS.
2. Δ FOOT LENGTH MEASURED REFERENCE TO FLAT FOOT SURFACE PARALLEL TO DATUM "A".
3. PACKAGE OUTLINE EXCLUSIVE OF MOLD FLASH & METAL BURR.
4. PACKAGE OUTLINE INCLUSIVE OF SOLDER PLATING.
5. EIAJ REF. NUMBER SC-74 (6 LEAD VERSION)
6. COPLANARITY 4 MILS. MAX.
7. PIN 1 I.D. DOT IS 0.3 MM \varnothing MIN. LOCATED ABOVE PIN 1.

| | | | |
|---------------------------------------|---------------------------------|----------|-----|
| MAXIM | | | |
| PROPRIETARY INFORMATION | | | |
| TITLE: PACKAGE OUTLINE, SOT 23, 8L | | | |
| APPROVAL | DOCUMENT CONTROL NO. 21-0078 | REV B | 1/1 |

Maxim cannot assume responsibility for use of any circuitry other than circuitry entirely embodied in a Maxim product. No circuit patent licenses are implied. Maxim reserves the right to change the circuitry and specifications without notice at any time.

Maxim Integrated Products, 120 San Gabriel Drive, Sunnyvale, CA 94086 408-737-7600 11