



PRODUCT DATASHEET

Boom series

last update 27/9/2012

DETAILS

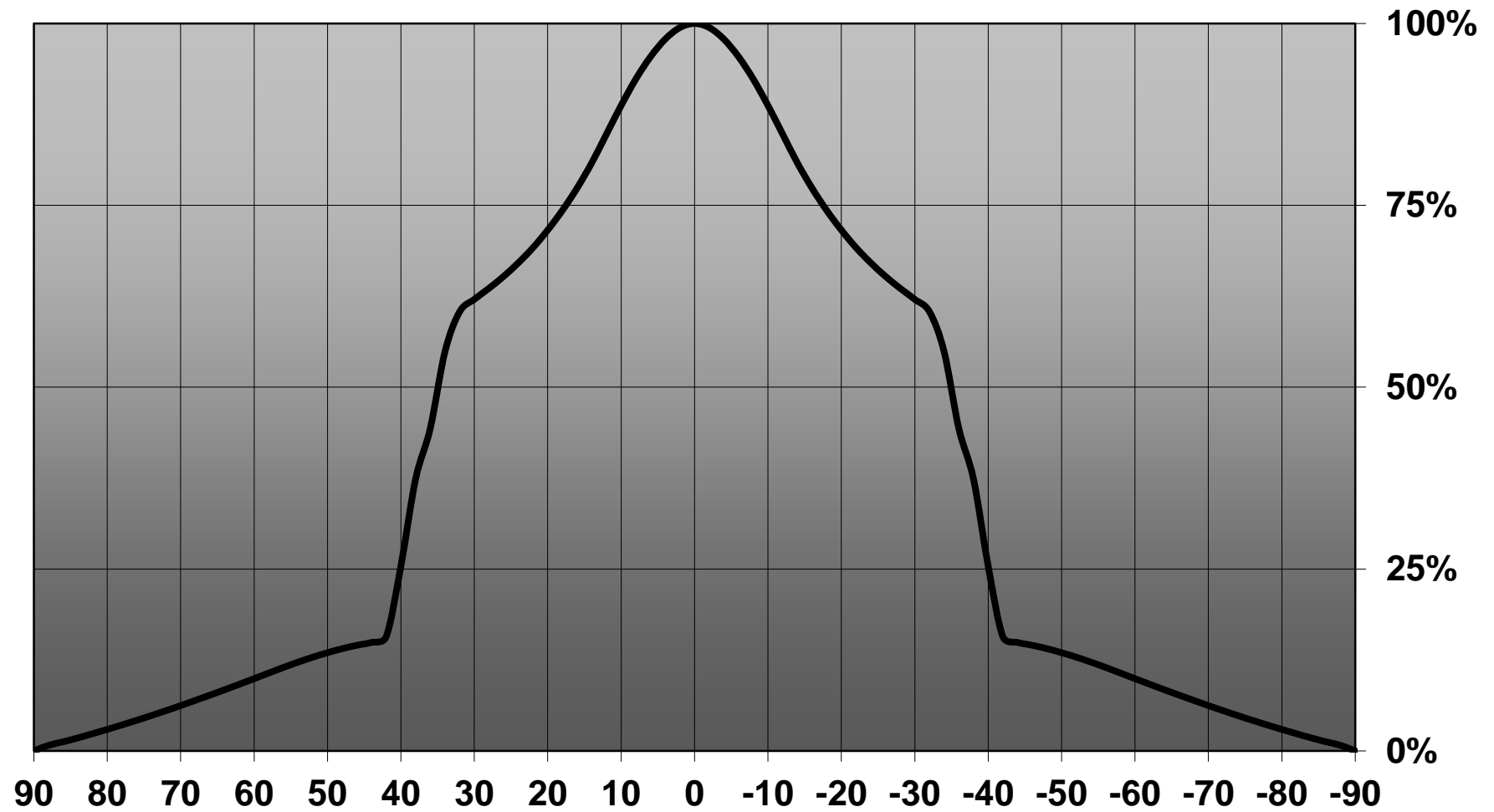
Product Number	CA12957_BOOM-XW
Family	Boom
Type	RefAssy
Color	white
Diameter	22,2 mm
Height	13,7 mm
Style	hexag
Optic Material	PC
Holder Material	
Fastening	tape
Status	ready
ROHS Comliant	Yes
Date Updated	27/09/2012

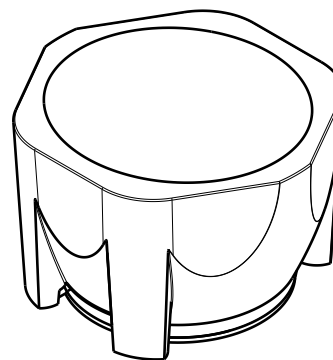
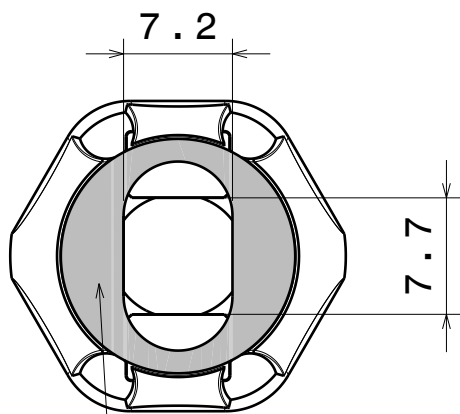


OPTICAL PROPERTIES

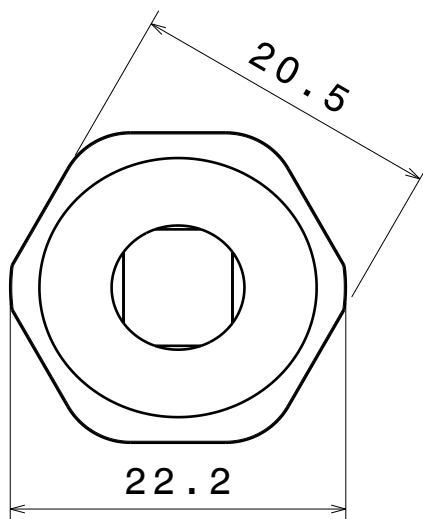
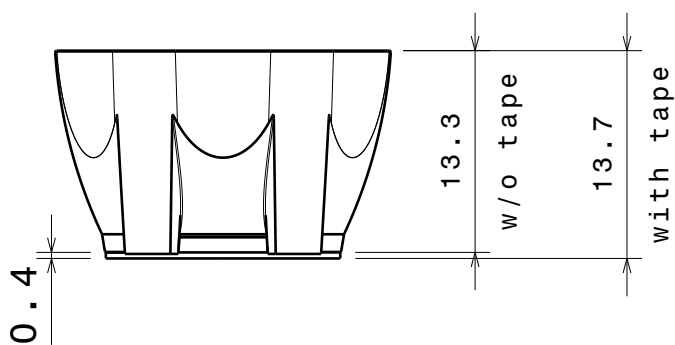
LED	Viewing Angle	Light Beam	Efficiency	cd/lm	connector
MC-E	70 degrees		-	0.670	-

Relative intensity of CA12957_BOOM-MC-XW (Cree MC-E)





Isometric view



Materials:

Reflector: PC, high reflective white
Tape: PU Foam

This drawing is our property.
It can't be reproduced
or communicated without
our written agreement.



Ledil Oy
Salorankatu 10
FIN 24240 SALO
Finland

DRAWING TITLE

DRAWN BY
as

DATE
3.8.2012

BOOM - XW

CHECKED BY
-

DATE
-

SIZE
A4

PART NUMBER

REV
001

DESIGNED BY
pv

DATE
-

SCALE

2:1

WEIGHT

1.98 g

SHEET

1/1

NOTE: The typical divergence will be changed by different color, chip size and chip position tolerance. The typical total divergence is the full angle measured where the luminous intensity is half of the peak value.

GENERAL INFORMATION

- Product series especially designed & optimized for series of LEDs.
- Special care taken to make light distribution as uniform as possible.
- Reflector is made of aluminium coated PC (120 degrees of Celcius / 248 degrees of Fahrenheit) with protective lacquer (short term 100 degrees of Celcius / 212 degrees of Fahrenheit).
- Fastening to heat sink with a PU foam adhesive tape of automotive grade. Please find fastening details by clicking link: http://www.ledil.com/datasheets/DataSheet_TAPE.pdf

NOTE 1: We advise customer to ensure the suitability and sufficiency of the bond in the end product. For example, mechanical stress, vibration and holes on the surface of the circuit board weaken the strength of the tape.

NOTE 2: Assembly to the surface must be made straight, so the tape bonds constant and balanced with fastening surface. Slanted assembly might cause unbalanced bond to the surface. All surfaces where tape is applied must be clean, dry and free from grease and dirt.

If cleaning of PCB surfaces is needed, please follow strictly the cleaning instructions of your LED manufacturer - this is important as cleaning shall under no circumstances damage LEDs or other electronics components on the PCB.

Further note that optical components shall not be cleaned with any chemicals - only micro fiber cloth may be used to remove fingerprints or other traces from handling.