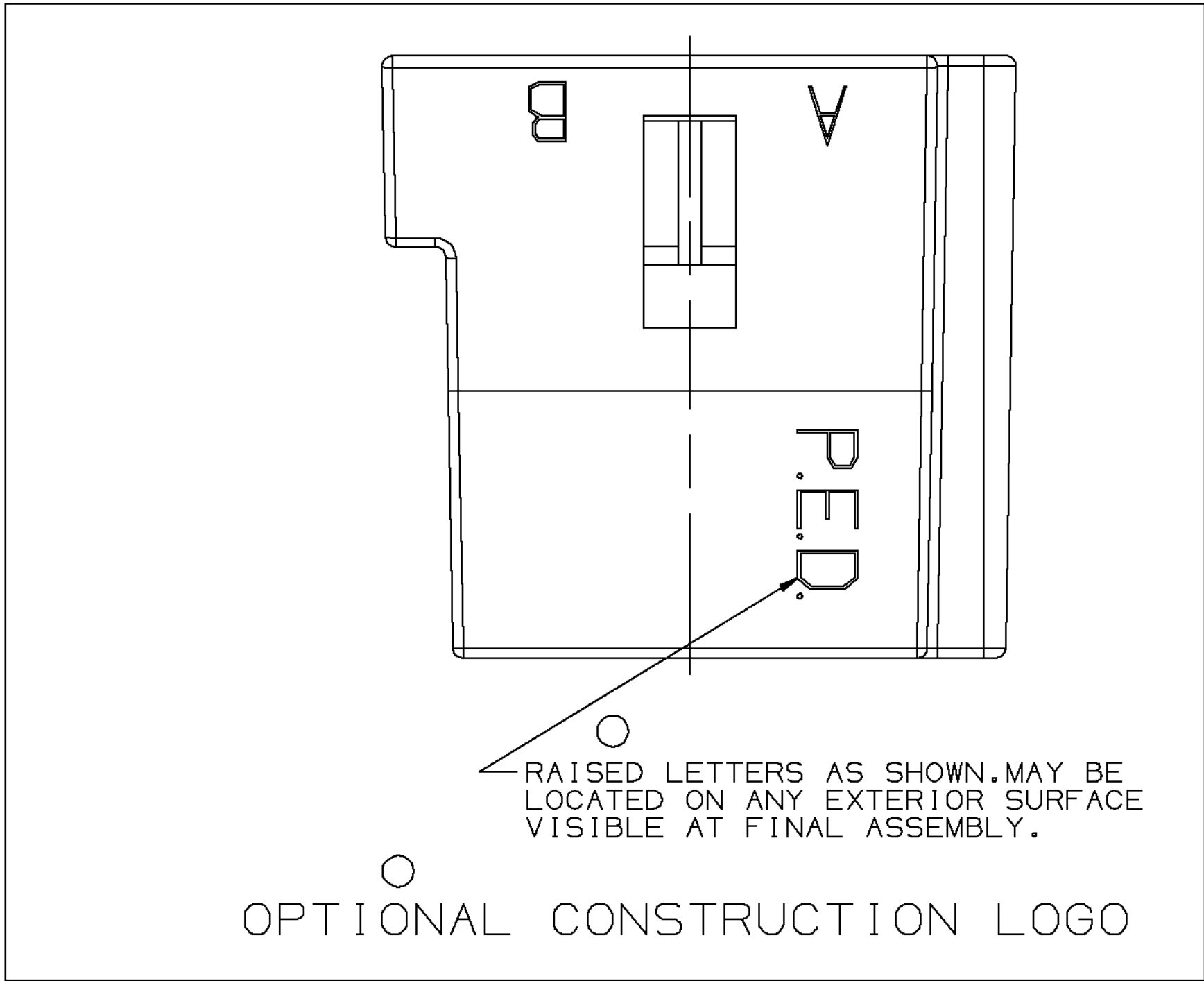
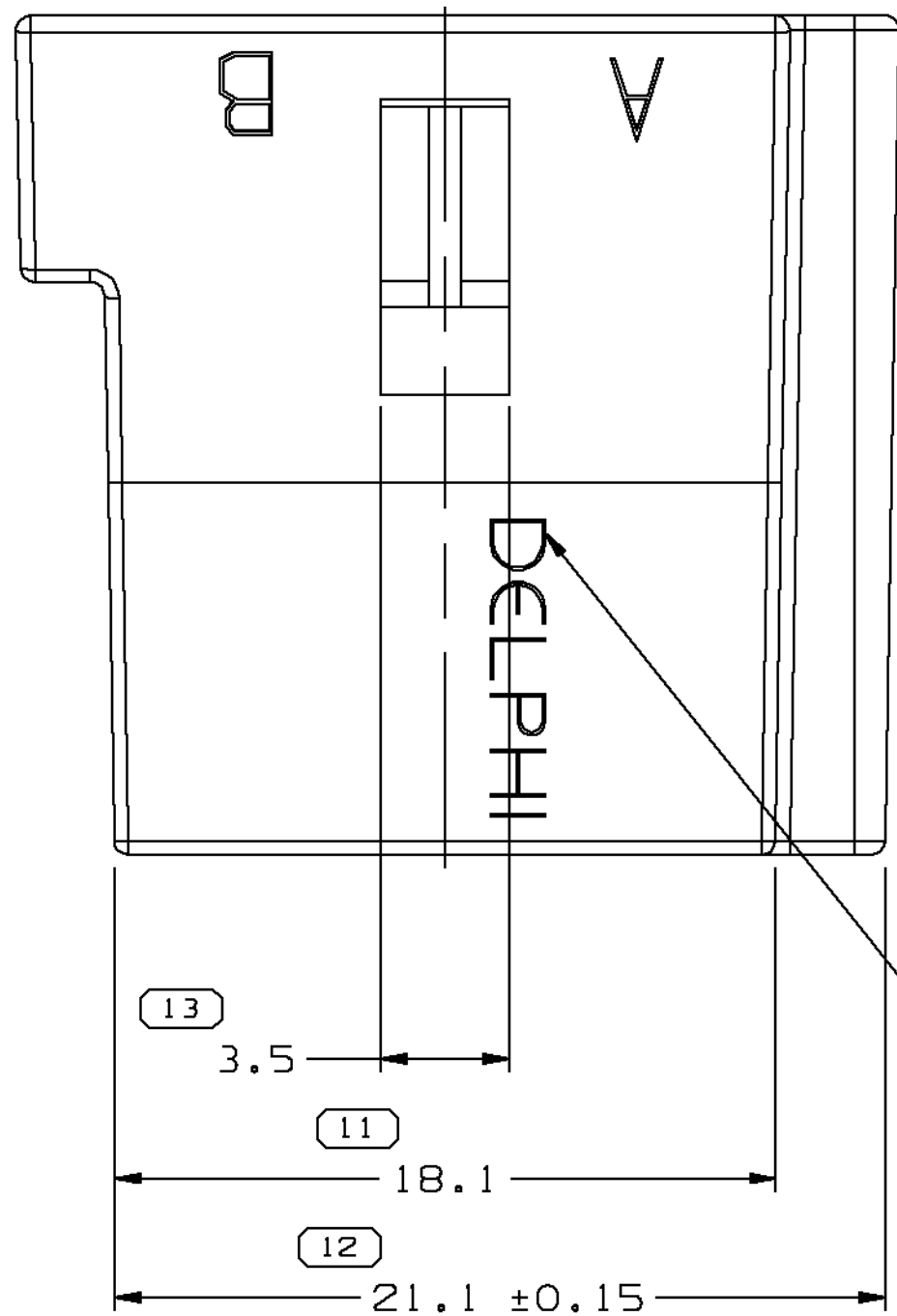
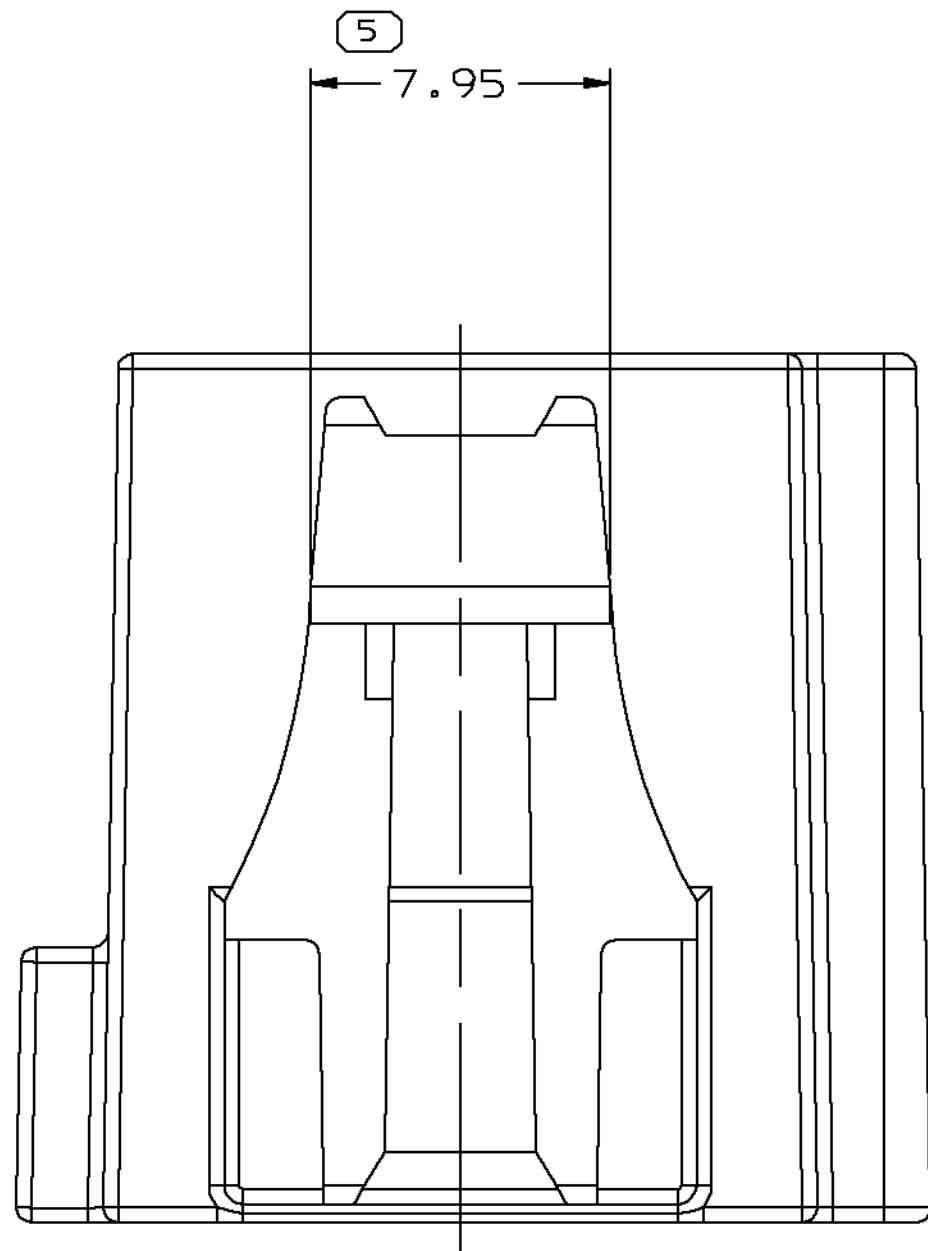
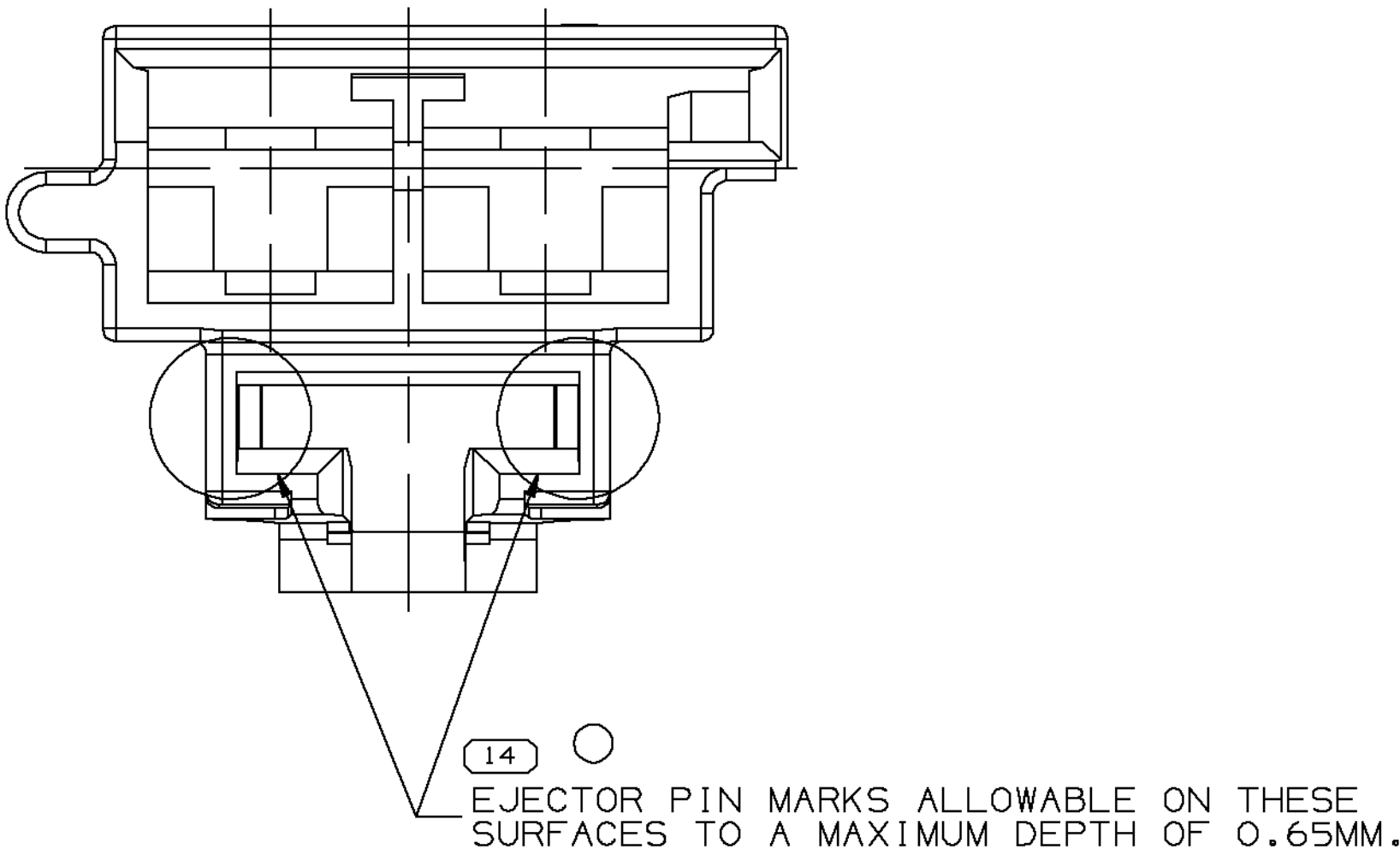
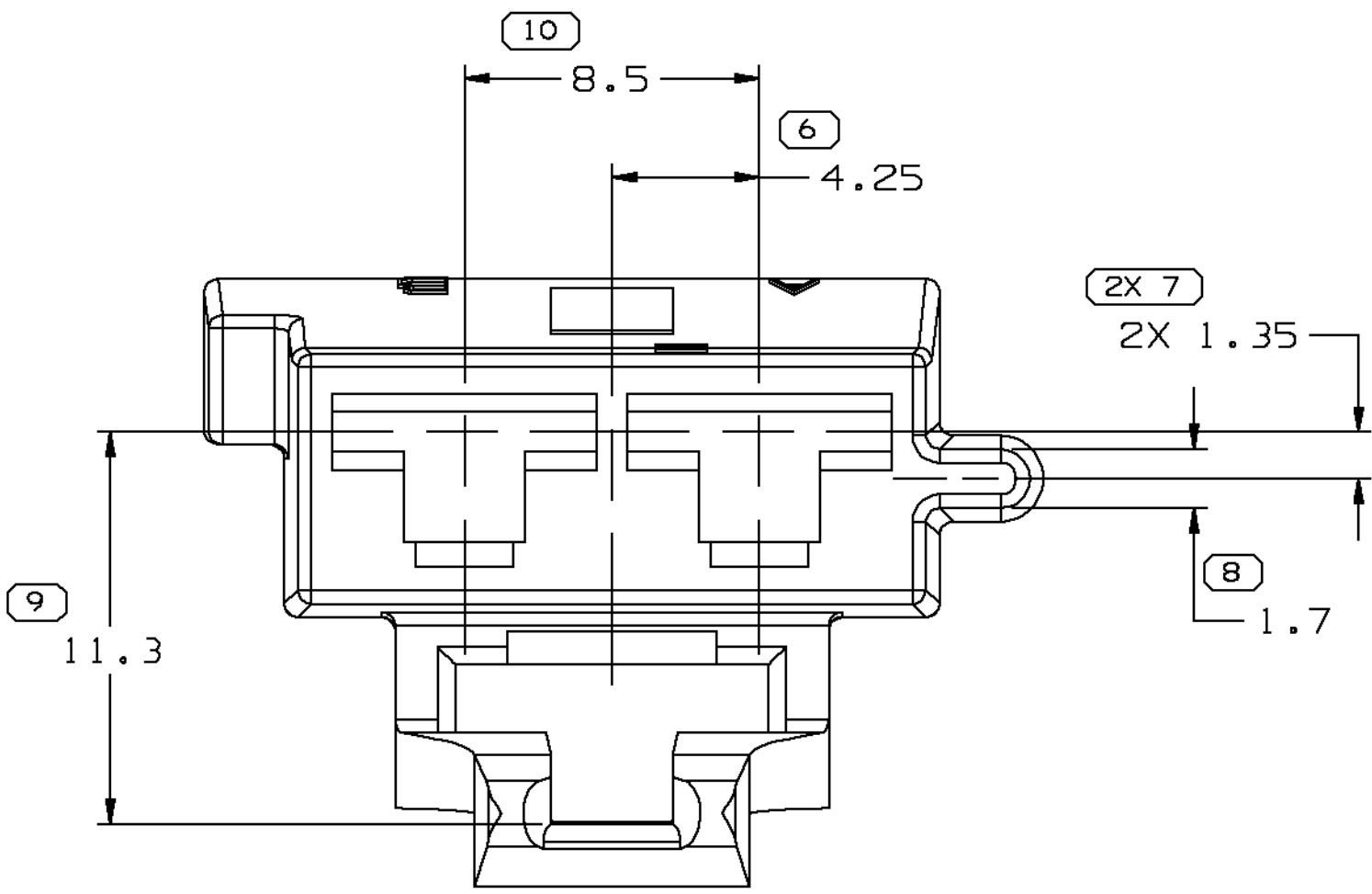
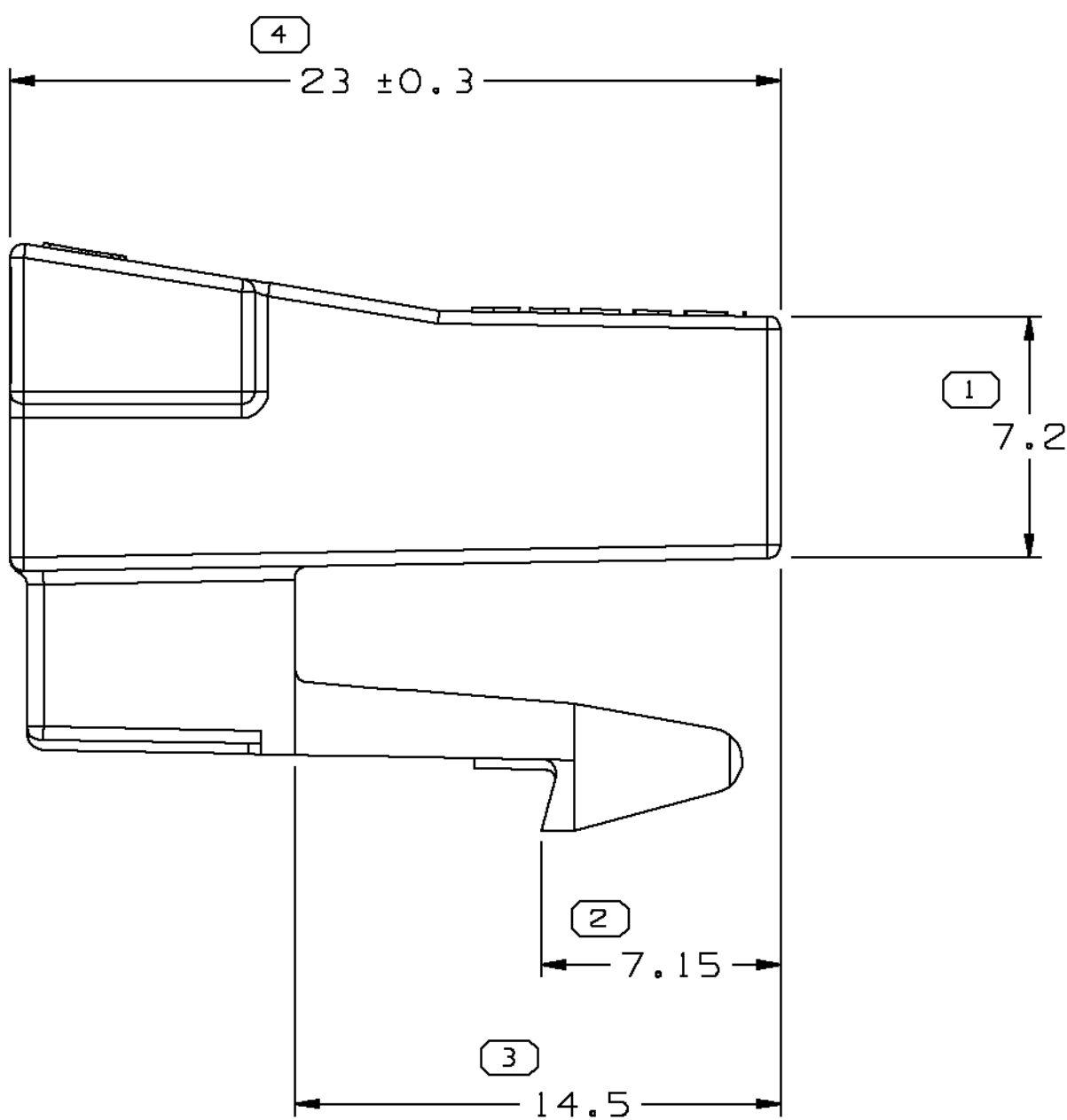


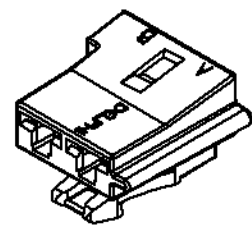
SYMBOL DEFINITION				MISSING SYMBOLS				DWS STATUS				ZONE				REVISION HISTORY				AUTH	DR	CK	APVD
A DIMENSION WITHOUT AN INSPECTION REPORT SYMBOL ( ) OR ( ) DOES NOT REQUIRE INSPECTION. IT MAY BE CONTROLLED ON THE INDIVIDUAL COMPONENT DRAWING.				TOTAL NO OF INSPECTIONS REQUIRED	15	NO MISSING SYMBOL NUMBER	DATE	STG	REV	CHG	N/P	ZONE	REDRAWN TO PD, ADDED OPT CONSTRUCTION & ADDED EJECTOR PIN MARKS NOTE				202052	JGR	EDV	JH			
							01SE00	R	B2	-	-												
INDICATES THE DIMENSION IS SHOWN ON THE PART DRAWING AND THE TOOL MUST BE QUALIFIED AT 80% OF THE TOLERANCE SHOWN UNLESS SUPERSEDED BY A "TBT".				LAST NO. USED	14																		



RAISED LETTERS AS SHOWN. MAY BE LOCATED ON ANY EXTERIOR SURFACE VISIBLE AT FINAL ASSEMBLY.



- NOTES
- UNLESS OTHERWISE SPECIFIED AND/OR INDICATED: DIMENSIONS ARE TO FACE OF VIEW SHOWN AND AUTOMATICALLY ROUNDED BY COMPUTER FOR INSPECTION (SEE MATH MODEL FOR PRECISE DIMENSIONS). FOR ALL OTHER DIMENSIONS NOT SHOWN BUT REQUIRED FOR TOOL BUILD, SEE MATH MODEL FOR PRECISE TOOL PATH DATA.
  - MATING COMPONENTS OR EQUIVALENT: CONNECTOR 12129938
  - THIS PART ACCEPTS THE FOLLOWING COMPONENTS OR EQUIVALENT: CAVITIES A & B TO ACCEPT 12015869 TERMINAL MAX INSULATION CRIMP MUST BE LESS THAN 5.5 MM HIGH AND 7.45 MM WIDE. SECONDARY TERMINAL LOCK 12129940 CONNECTOR POSITION ASSURANCE LOCK 12052834



<b>DELPHI</b> Automotive Systems	
MATERIAL SPEC R0071754 PA66 HS 1M-BLK	
SUBSTANCES OF CONCERN AND RECYCLED CONTENT PER DELPHI -A 10949001	
PART DRAWING	
CODE NUMBER 6900	DWG DATE 26MR92
OC SPEC	STYLE
SCALE 5:1	
VOLUME cm³ 2.152	
PART GEOMETRY 3D SOLID	
UNLESS OTHERWISE SPECIFIED: THIS DOCUMENT IS IN ACCORDANCE WITH ASME Y14.5M - 1994 AS AMENDED BY THE GM GLOBAL DIMENSIONING AND TOLERANCING ADDENDUM - 1997. ALL GEOMETRIC TOLERANCES AND RELATED DATUMS APPLY RFS. RULE #1 (PERFECT FORM AT MMC) DOES NOT APPLY WHEN RELATIONSHIP BETWEEN FEATURES IS ESTABLISHED BY ORIENTATION OR LOCATION TOLERANCES. SEPARATE POSITION CALLOUTS MAY BE GAGED SEPARATELY. REGARDLESS OF DATUM REFERENCES.	
COPY OF MATH DATA DO NOT SCALE	
REFERENCE	
DR	
DATE	
APVD1 J. GAVALDON 28AU00	
APVD2 E. VAZQUEZ 01SE00	
APVD3 J. HORIUCHI 05SE00	
APVD4	
APVD5	
METRIC UNLESS OTHERWISE SPECIFIED, ALL DIMENSIONS ARE IN MILLIMETERS	
THIRD ANGLE PROJECTION	
DRAWING NAME CONN 2F M/P 630	

DIMENSIONAL RANGE (MM)				CHART E1			
FROM	TO	0	> 20	> 30	> 70	> 100	> 150
0	20	0	30	70	100	150	200
20	30	±0.15	±0.2	±0.3	±0.4	±0.5	±0.6
30	70	±0.2	±0.3	±0.4	±0.5	±0.6	±0.8
70	100	±0.3	±0.4	±0.5	±0.6	±0.8	±1
100	150	±0.4	±0.5	±0.6	±0.8	±1	±1.2
150	200	±0.5	±0.6	±0.8	±1	±1.2	±1.5
200	250	±0.6	±0.8	±1	±1.2	±1.5	±2
250	300	±0.8	±1	±1.2	±1.5	±2	±2.5
300	400	±1	±1.2	±1.5	±2	±2.5	±3

SHEET NUMBER				DRAWING NUMBER				DWS STATUS				SIZE			
1	OF	1		12129939				R	B2	-		A0			

# Mouser Electronics

Authorized Distributor

Click to View Pricing, Inventory, Delivery & Lifecycle Information:

[Delphi Connection Systems:](#)

[12129939-B](#)