

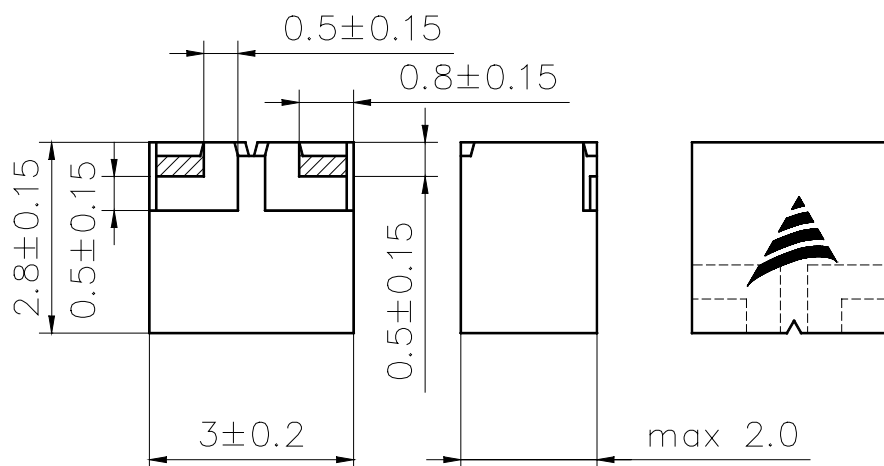
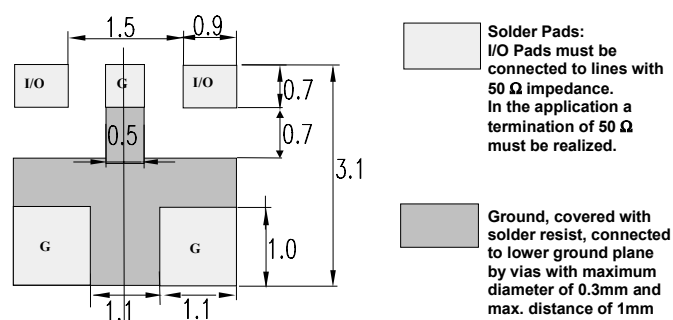
Features

- Small Dimensions (3mm x 2.8mm x 2mm)
- Low Losses in Passband (typ. 1.5dB)
- High attenuations at GSM, PDC, PHS, UMTS, and WLAN Bands
- Excellent reflow solderability, no migration effect due to copper/tin metallization

Index

- | | |
|--------|---|
| Page 2 | <ul style="list-style-type: none"> • Dimension Limits • Recommended Footprint |
| Page 3 | <ul style="list-style-type: none"> • Characteristics • Maximum ratings • Typical passband characteristic |
| Page 4 | <ul style="list-style-type: none"> • Processing information • Soldering requirements |
| Page 5 | <ul style="list-style-type: none"> • Delivery mode |

ISSUE DATE	02.03.04	ISSUE	P5	PUBLISHER	SAW MWC PD	PAGE	1/5
------------	----------	-------	----	-----------	------------	------	-----

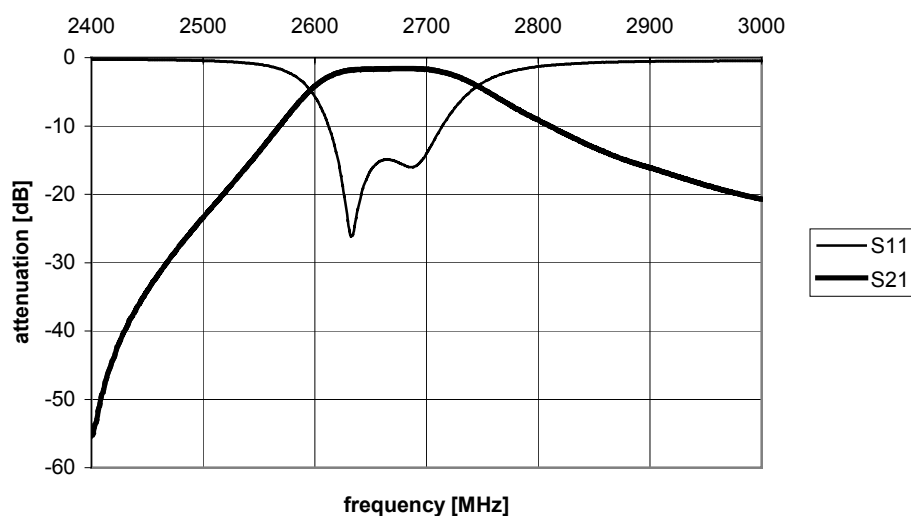
Preliminary Data Sheet
Dimension Limits

Recommended Footprint


ISSUE DATE	02.03.04	ISSUE	P5	PUBLISHER	SAW MWC PD	PAGE	2/5
------------	----------	-------	----	-----------	------------	------	-----

Characteristics (over whole temperature range)		min.	typ.	max.	
Center frequency	f_C	-	2.6425	-	GHz
Insertion loss	α_{IL}		1.5	2.0	dB
Passband (2629- 2656)	B	27			MHz
Amplitude ripple (peak - peak)	$\Delta\alpha$		0.1	0.3	dB
Standing Wave Ratio / Return Loss [dB]			1.5 / -14	2.0 / -9.5	
Impedance	Z		50		Ω
Attenuation	α				
at DC to 440 MHz		57	>70		dB
at 440 to 1525 MHz		32	45		dB
at 1525 to 1680 MHz		40	45		dB
at 1680 to 1980 MHz		35	40		dB
at 1980 to 2170 MHz		32	35		dB
at 2170 to 2500 MHz		22	25		dB
at 3450 MHz		30	35		dB

Maximum ratings

IEC climatic category (IEC 68-1)		- 40 /+ 90/56	
Operating temperature	T_{Op}	- 40 / + 85	°C

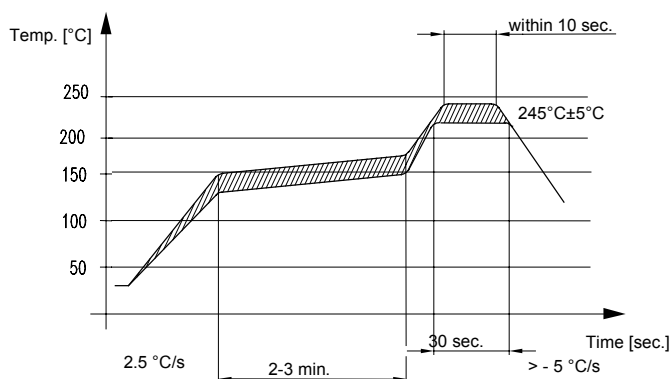
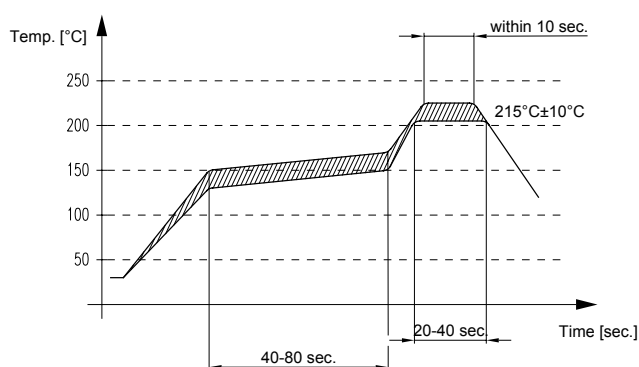
Typical passband characteristics


Processing information

Wettability acc.to IEC 68-2-58: $\geq 75\%$ (after aging)

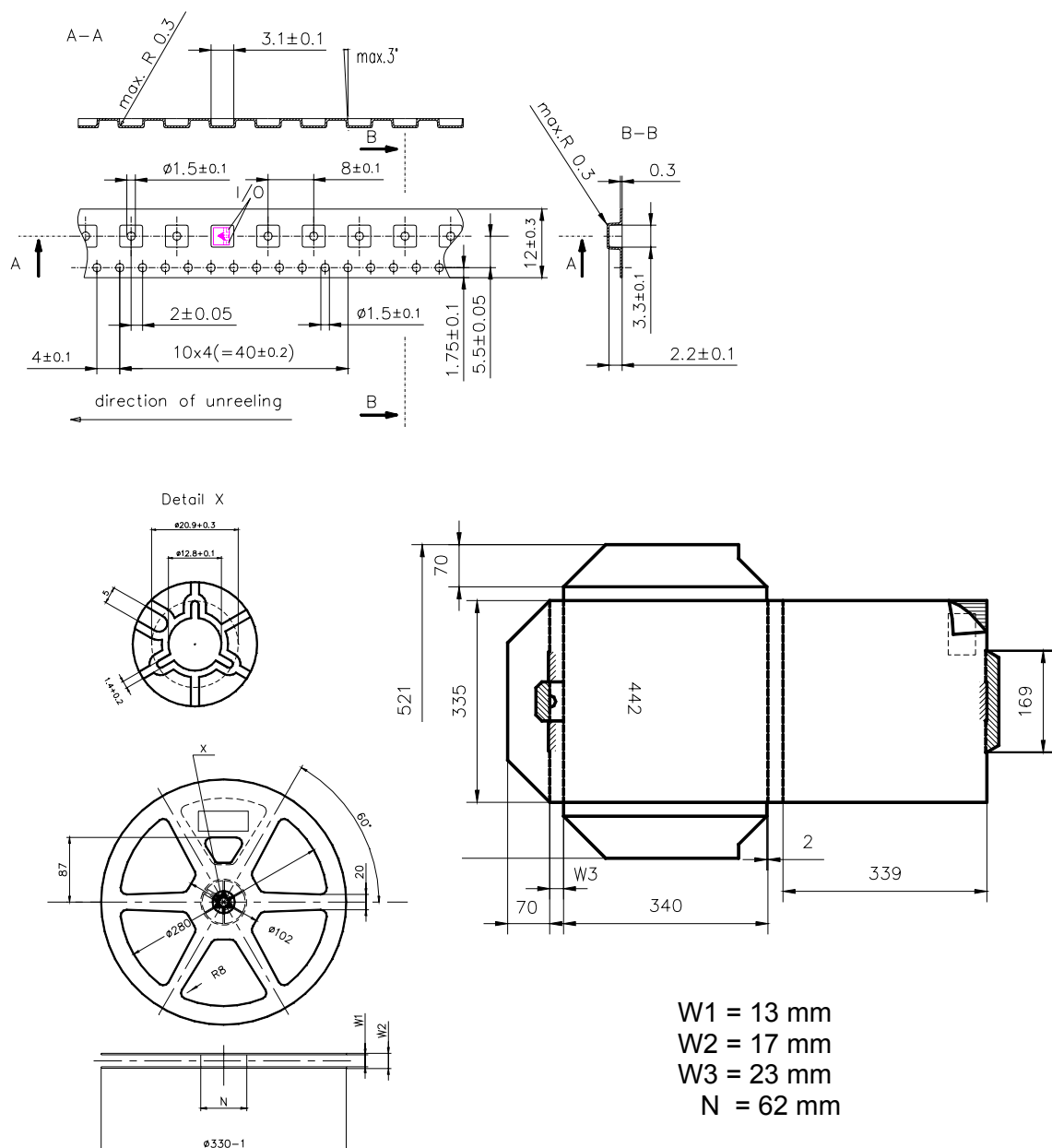
Soldering Requirements

	Profile for eutectic SnPb solder paste	Profile for leadfree solder paste	
Soldering type	reflow	reflow	
Maximum soldering temperature (measuring point on top surface of the component)	235 (max. 2 sec.) 225 (max. 10 sec.)	260 (max. 2 sec.) 250 (max. 10 sec.)	°C °C

Recommended soldering conditions (infrared):


Preliminary Data Sheet
Delivery mode

- Blister tape acc. to IEC 286-3, grey
- Pieces/tape: **4000**



© EPCOS AG 2001. All Rights Reserved. Reproduction, publication and dissemination of this data sheet, enclosures hereto and the information contained therein without EPCOS' prior express consent is prohibited.

The information contained in this data sheet describes the type of component and shall not be considered as guaranteed characteristics. Purchase orders are subject to the General Conditions for the Supply of Products and Services of the Electrical and Electronics Industry recommended by the ZVEI (German Electrical and Electronic Manufacturers' Association), unless otherwise agreed.

ISSUE DATE	02.03.04	ISSUE	P5	PUBLISHER	SAW MWC PD	PAGE	5/5
------------	----------	-------	----	-----------	------------	------	-----