

Distributed by:



www.Jameco.com ♦ 1-800-831-4242

The content and copyrights of the attached
material are the property of its owner.

CLIPLITE®

LENSE MOUNTS FOR 3mm & 5mm LEDs



U.S. & Foreign Pat. Pend.

SPECIFICATIONS

- MATERIAL:** Lense - Polycarbonate; Spacer - Polypropylene. (U.L. Listed Materials).
- DESIGN:** Standard and low profile lenses with fresnel rings and striated lines. CLR 301 Low Profile Lense is available without fresnel rings.
- MOUNTING:** Mounts thru front of panel. Mounting holes should be deburred but not chamfered.
 3mm (SML 190, SMB 200) mounts in a $.171 \pm .002$ (4.34mm) hole on 1/4" centers. Panel thickness for SML 190, 1/32" to 1/16"; SMB 200, 1/16" to 1/8". 5mm (CLF 280, CLB 300, CLR 301) mounts in a $.250 \pm .002$ (6.35mm) hole on 3/8" centers. Panel thickness for CLF 280, 1/16" to 1/8"; CLB 300 and CLR 301, 1/32" to 1/4"; for panels less than 3/16", use SPC 125 spacer. Lense retaining ring - available for added security (RNG 190, 3mm & RNG 268, 5mm)

ORDERING CODES

MODEL	CLF 280	RTP	COLOR
SML 190 (3mm) Std. Hgt.		RTP	Red Transparent
SMB 200 (3mm) L/Profile		ATP	Amber Transparent
CLF 280 (5mm) Std. Hgt.		GTP	Green Transparent
CLB 300 (5mm) L/Profile		BTP	Blue Transparent
CLR 301 (5mm) L/P Plain		YTP	Yellow Transparent
SPC 125 (Spacer for CLB 300 and CLR 301)		CTP	Clear Transparent

VISIBILITY – CLIPLITE produces up to 180 degrees of viewing angle using standard 3mm and 5mm LEDs.

BRIGHTNESS – CLIPLITE utilizes striated lines and fresnel rings to increase apparent brightness up to 125% and viewing angle up to 180 degrees with either diffused or nondiffused LEDs. A low profile lense without rings or lines is available for direct sunlight applications.

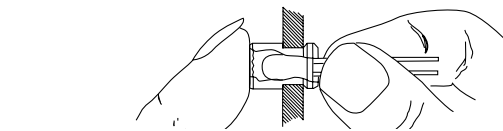
PROTECTION – CLIPLITE helps prevent IC failures caused by electrostatic discharge (ESD). Simply walking across a carpet can generate 10,000 volts. Introduction of this ESD thru an exposed panel mounted LED is capable of damaging or destroying a semiconductor. A CLIPLITE mounted LED helps guard components from ESD up to 16 kv while affording the LED physical protection.

INSTALLATION – CLIPLITE, standard or low profile, requires no assembly tools; just snap into a panel opening and insert LED. Cost effective operation is complete in only 6 seconds.

SIMPLE TWO-STEP INSTALLATION

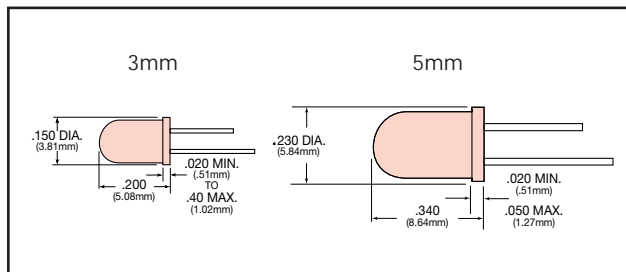


1. Snap the CLIPLITE into panel hole.



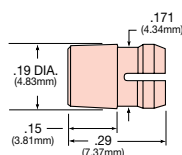
2. While holding the CLIPLITE tight to the panel with your finger, insert the LED into the CLIPLITE from the back.

RECOMMENDED LEDs

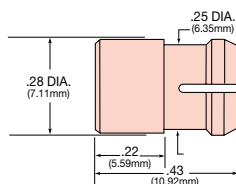


OUTLINE DRAWINGS

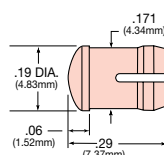
SML 190 (3mm)



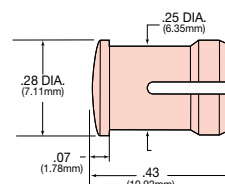
CLF 280 (5mm)



SMB 200 (3mm)



CLB 300/CLR 301 (5mm)



SPC 125 (5mm)

