

PRODUCT NUMBER

5 2 6 0 1 - X X X - X X X X LF

PLATING

S=15μ"[0.38μm]GOLD ON
CONTACT AREA (NOTE 13)
100μ"[2.54μm]TIN ON TAIL

G=30μ"[0.76μm]GOLD ON
CONTACT AREA (NOTE 13)
100μ"[2.54μm]TIN ON TAIL

LEAD FREE OPTION
NOTE 10,11,12

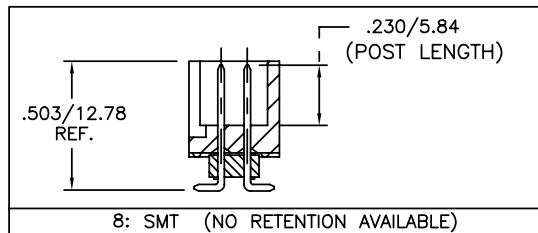
PACKAGE NOTE 5

RETENTION
R= RETENTIVE LEG (NOTE 6)

POLARIZATION
NOTE 9

TAIL	
1	.090/2.29
2	.142/2.84
4	.120/3.05
6	.150/3.81
7	.675/17.15
8	SMT

	TOTAL POSITIONS	HDR. STYLE
10	2 x 5	B
14	2 x 7	C
16	2 x 8	D
20	2 x 10	D
26	2 x 13	D
30	2 x 15	D
34	2 x 17	D
40	2 x 20	D
44	2 x 22	D
50	2 x 25	D
60	2 x 30	D



NOTES:

- HOUSING MAT'L: HIGH TEMPERATURE THERMOPLASTIC. UL94V-0
COLOR: BLACK
OR
MINERAL FILLED LCP FLAME RETARDANT
PER UL-94V-0. COLOR: BLACK.
- PIN MATERIAL: PHOSPHOR-BRONZE
- TO DETERMINE DIMENSIONS:
N = NUMBER OF POSITIONS PER ROW
EXAMPLE: 10 POS., (N-1) x .100[2.54]=.900[22.86]
- 3 LBS./1.36 KG MIN. RETENTION
- PACKAGED IN TRAYS,
PART NUMBER FOLLOWS BY "T" SUFFIX ARE PACKAGED
TAPE ON RELL WITH PACK-UP INSTALLED. VACUUM CAP TO BE
CENTRALLY LOCATED REGARDLESS OF NUMBER OF POSITIONS (SHEET 3)
- RETENTIVE LEG APPLICABLE TO TAIL LENGTHS .125/3.18 MAX.
5LB/2.3KG MAX INSERTION FORCE AND .25LB./1KG MIN RETENTION FORCE
PER RETENTIVE PIN USING .062/1.57 THICK CIRCUIT BOARD AND RECOMMENDED
HOLE PATTERN. RETENTIVE LOCATION AT THE DISCRETION OF THE MANUFACTURER.
RETENTION PIN MAY BE SHIFTED TO NEXT POSITION.
- OMIT FROM PRODUCT NUMBER IF THIS FEATURE IS NOT APPLICABLE.
- UNDERPLATING: 50μ"/1.27μm Ni.
- FOR POLARIZATION SPECIFY POSITION NUMBER (i.e. 03 = PIN 3) TO OMIT PIN.
OMIT FROM PRODUCT NUMBER IF THIS FEATURE IS NOT APPLICABLE.
- ADD "LF" SUFFIX AT THE END OF PART NUMBER FOR LEAD FREE OPTION.
- THE HOUSING WILL WITHSTAND EXPOSURE TO 260°C PEAK TEMPERATURE
FOR 15 SECONDS IN A WAVE SOLDER APPLICATION WITH A 1.5mm
MINIMUM THICK CIRCUIT BOARD. SEE APPLICATION NOTES/PROCEDURES
IF THEY ARE AVAILABLE.

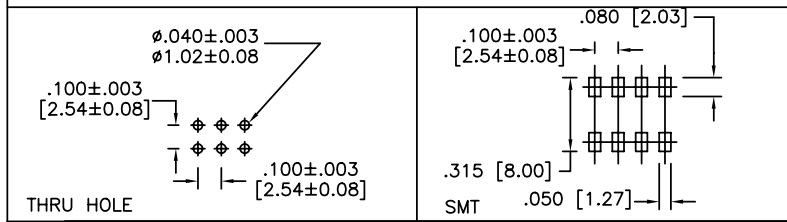
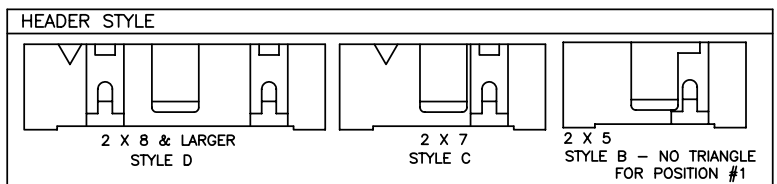
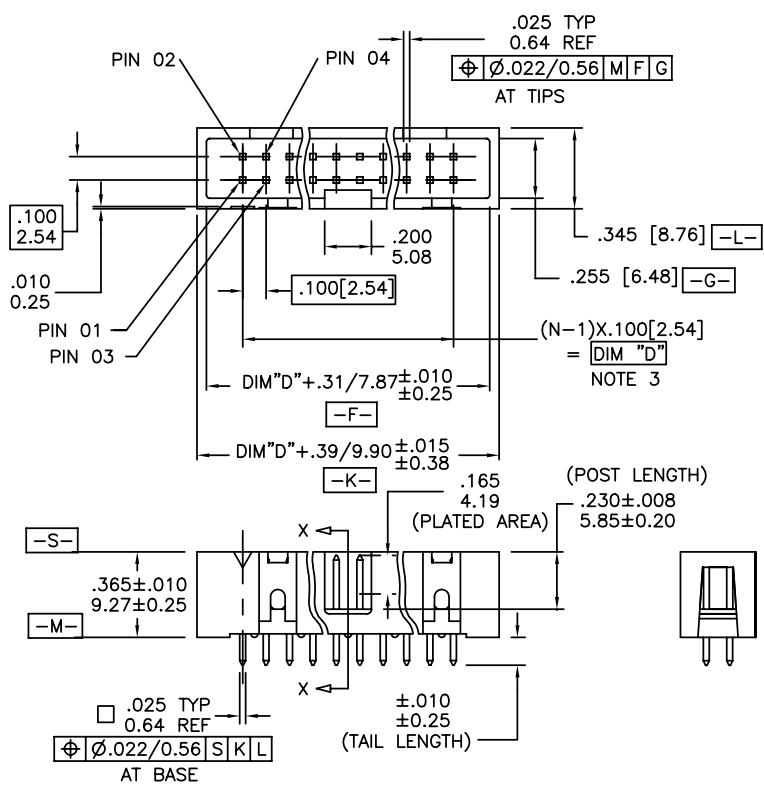
THE HOUSING WILL WITHSTAND EXPOSURE TO 260°C PEAK TEMPERATURE
FOR 20 SECONDS IN A CONVECTION, INFRA-RED OR VAPOR PHASE
REFLOW OVEN. SEE APPLICATION NOTES/PROCEDURES IF THEY ARE AVAILABLE.
- THIS PRODUCT MEETS EUROPEAN UNION DIRECTIVES AND OTHER
COUNTRY REGULATION AS DESCRIBED IN GS-22-008.
- PLATING OPTIONS:
MAY BE EITHER GOLD OR GXT PLATED AT MANUFACTURER'S OPTION.

rev	ecn no	dr	date
S	M08-0117	MHT	04/22/08
T	M08-0118	MHT	04/24/08
U	M08-0237	MHT	05/25/08
V	M08-0261	MHT	08/19/08
W	N08-0279	MHT	09/30/08
X	N10-0327	AZH	11/04/10

www.fciconnect.com		surface ISO 1302	tolerance ISO 406 ISO 1101	projection	MM
		TOLERANCES UNLESS OTHERWISE SPECIFIED			
Dr	D.INGRAM	07/07/99	ANGULAR	size	A4
Eng	L.GREEN	07/12/99	LINEAR	size	Scale 1:1
Chr	L.GREEN	07/12/99	0° ±2.0°	ECN	N10-0327
Appr	L.GREEN	07/21/99	Product family	QUICKIE	Spec ref
FCI		title		8	Rev.
		0.100/2.54MM LOW PROFILE SHROUDED VERTICAL HEADER		dwg	X
		catalog no		CUSTOMER	
				sheet 1 of 3	



Copyright FCI.



RECOMMENDED BOARD LAYOUT

www.fciconnect.com			surface ISO 1302	tolerance ISO 406 ISO 1101	projection	MM
			ANGULAR	LINEAR	size	Scale
Dr	D.INGRAM	07/07/99	0°	±2.0°	A4	1:1
Eng	L.GREEN	07/12/99	TOLERANCES UNLESS OTHERWISE SPECIFIED		ECN	N10-0327
Chr	L.GREEN	07/12/99	Product family		Spec ref	
Appr	L.GREEN	07/21/99	QUICKIE			
FCI			title		dwg	Rev.
			0.100/2.54MM LOW PROFILE SHROUDED VERTICAL HEADER		52601	X
			catalog no		CUSTOMER	sheet 2 of 3



Copyright FCI.

A

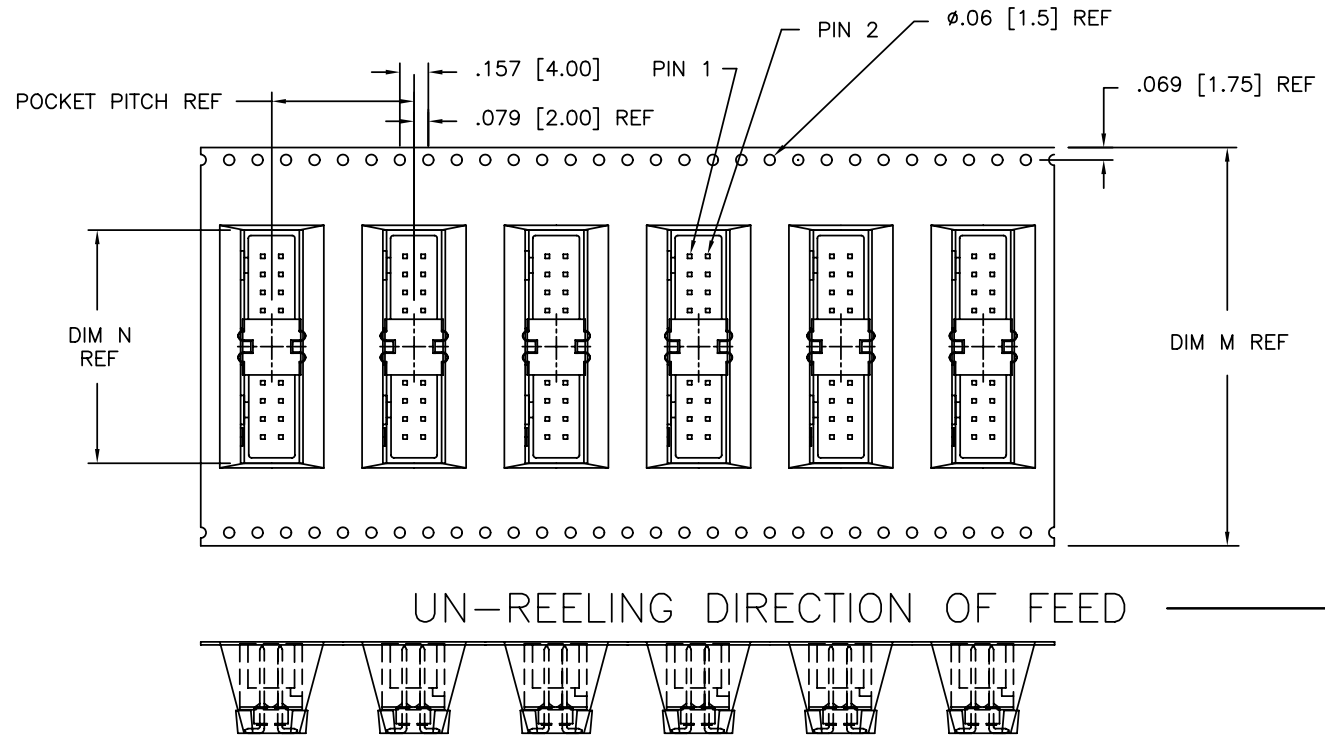
B

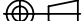
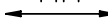

C

D

PRODUCT No. NOTE 10	NO. OF POSITIONS	HSG. STYLE	POLARIZED POSITION	PACKAGING	POCKET PITCH	DIM M	DIM N
52601-S10-801T	2 X 5	B	01	TAPE-ON-REEL	0.787/20.00	1.260/32.00	0.790/20.07
52601-S10-805T	2 X 5	B	05	TAPE-ON-REEL	0.787/20.00	1.260/32.00	0.790/20.07
52601-S10-807T	2 X 5	B	07	TAPE-ON-REEL	0.787/20.00	1.260/32.00	0.790/20.07
52601-S14-807T	2 X 7	C	07	TAPE-ON-REEL	0.787/20.00	1.732/44.00	1.090/27.69
52601-S14-80714T	2 X 7	C	07,14	TAPE-ON-REEL	0.787/20.00	1.732/44.00	1.090/27.69
52601-X16-8T	2 X 8	D	-	TAPE-ON-REEL	0.787/20.00	1.732/44.00	1.090/27.69
52601-X20-8T	2 X 10	D	-	TAPE-ON-REEL	0.787/20.00	2.204/56.00	1.290/32.77
52601-X30-8T	2 X 15	D	-	TAPE-ON-REEL	0.787/20.00	2.834/72.00	1.786/45.37
52601-X40-8T	2 X 20	D	-	TAPE-ON-REEL	0.787/20.00	3.465/88.00	2.293/58.25

* SPECIAL CUSTOMER



www.fciconnect.com			surface ISO 1302		tolerance ISO 406 ISO 1101		projection		MM		
			TOLERANCES UNLESS OTHERWISE SPECIFIED								
Dr	D.INGRAM	07/07/99	ANGULAR	LINEAR	0.X ± 0.30		size A4	Scale 1:1			
Eng	L.GREEN	07/12/99			0.XX ± 0.13						
Chr	L.GREEN	07/12/99			0.XXX ± 0.05						
Appr	L.GREEN	07/21/99	Product family QUICKIE				ECN N10-0327				
			Spec ref								
			title 0.100/2.54MM LOW PROFILE SHROUDED VERTICAL HEADER				dwg no 52601			Rev. X	
			catalog no				CUSTOMER			sheet 3 of 3	

REV F - 2006-04-17

1

2

3 PDM: Rev:X

STATUS Released

4 Printed: Apr 12, 2011

Mouser Electronics

Authorized Distributor

Click to View Pricing, Inventory, Delivery & Lifecycle Information:

FCI:

[52601-G34-6](#)