



SAW Components

SAW Rx filter

Cellular / WCDMA Band V

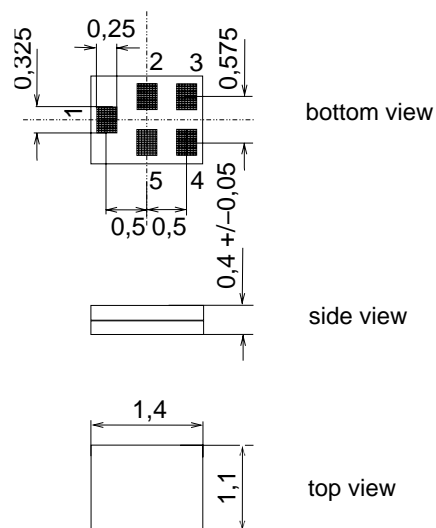
Series/type:	B9439
Ordering code:	B39881B9439M410
Date:	May 21, 2007
Version:	2.0

Application

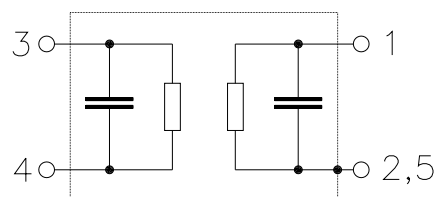
- Low-loss RF filter for mobile telephone
Cellular systems, receive path (RX)
- Suitable for diversity applications
- Impedance 50 Ω input and output
- Unbalanced / unbalanced operation
- Very high TX suppression
- Usable passband 25 MHz


Features

- Package size 1.4 x 1.1 x 0.4 mm³
- Package code QCS5I
- RoHS compatible
- Approximate weight 0.003 g
- Package for **S**urface **M**ount **T**echnology (**SMT**)
- Ni, gold-plated terminals
- **E**lectrostatic **S**ensitive **D**evice (**ESD**)


Pin configuration

- 1 Input, unbalanced
- 4 Output, unbalanced
- 2,3,5 To be grounded





SAW Components

B9439

SAW Rx filter

881.5 MHz

Data sheet



Characteristics

Temperature range for specification: $T = -30\text{ °C to }+85\text{ °C}$
Terminating source impedance: $Z_S = 50\ \Omega$
Terminating load impedance: $Z_L = 50\ \Omega$

						B9439			
						min.	typ. @ 25 °C	max.	
Center frequency f_C						—	881.5	—	MHz
Maximum insertion attenuation									
	869.0	...	894.0	MHz	α_{\max}	—	2.1	2.5	dB
@ f_{Carrier}	871.4	...	891.6	MHz	$\alpha_{\text{WCDMA}}^{1)}$	—	1.9	2.2	dB
Amplitude ripple (p-p)									
	869.0	...	894.0	MHz	$\Delta\alpha$	—	0.8	1.2	dB
Error Vector Magnitude²⁾									
@ f_{Carrier}	871.4	...	891.6	MHz	EVM	—	1.9	2.5	%
Input VSWR									
	869.0	...	894.0	MHz		—	1.7	2.0	
Output VSWR									
	869.0	...	894.0	MHz		—	1.7	2.0	
Attenuation α									
	0.0	...	849.0	MHz		46	49	—	dB
@ f_{Carrier}	826.4	...	846.6	MHz	$\alpha_{\text{WCDMA}}^{1)}$	46	52	—	dB
	910.0	...	914.0	MHz		18	26	—	dB
	914.0	...	950.0	MHz		25	32	—	dB
	950.0	...	1850.0	MHz		40	52	—	dB
	1850.0	...	2000.0	MHz		46	56	—	dB
	2000.0	...	3500.0	MHz		35	38	—	dB
	3500.0	...	4000.0	MHz		28	33	—	dB
	4000.0	...	4500.0	MHz		20	23	—	dB
	4500.0	...	5200.0	MHz		17	23	—	dB
	5200.0	...	6000.0	MHz		13	23	—	dB

¹⁾ Attenuation of WCDMA signal ("Powertransferfunction"). Please refer to annotation on page (4).

²⁾ Error Vector Magnitude (EVM) based on definition given in 3GPP TS 25.141.



SAW Components	B9439
SAW Rx filter	881.5 MHz
Data sheet	

Annotation for characteristics section

- (1) Attenuation of WCDMA signal ("Powertransferfunction", α_{WCDMA}) is determined by

$$\int_{-\infty}^{\infty} |S_{\text{ds21}}(f) H_{\text{RRC}}(f - f_{\text{Carrier}})|^2 df$$

f_{Carrier} according to 3GPP TS 25.101 (e.g. for Passband, f_{Carrier} ranges from 871.4 MHz (lowest Tx channel) to 891.6 MHz (highest Tx channel)). $H_{\text{RRC}}(f)$ is the transfer function of the root-raised cosine transmit pulse shaping filter according to 3GPP TS 25.101 with the following normalization:

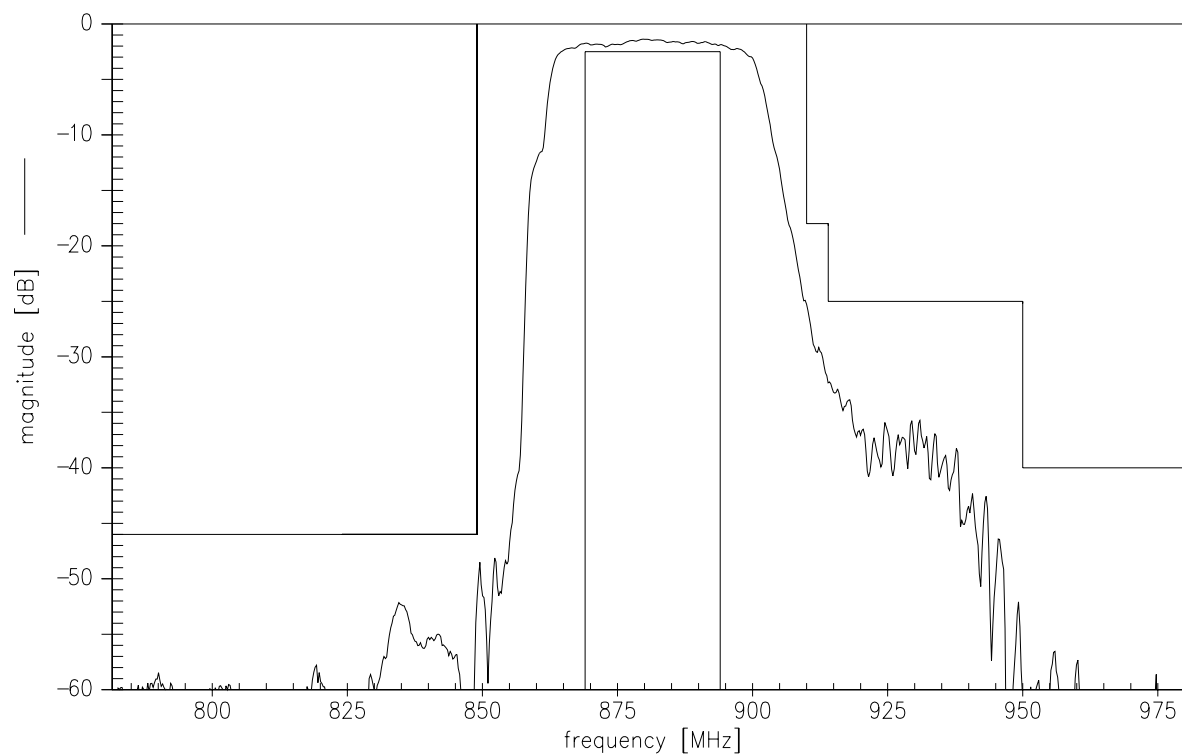
$$\int_{-\infty}^{\infty} |H_{\text{RRC}}(f)|^2 df = 1$$

Maximum ratings

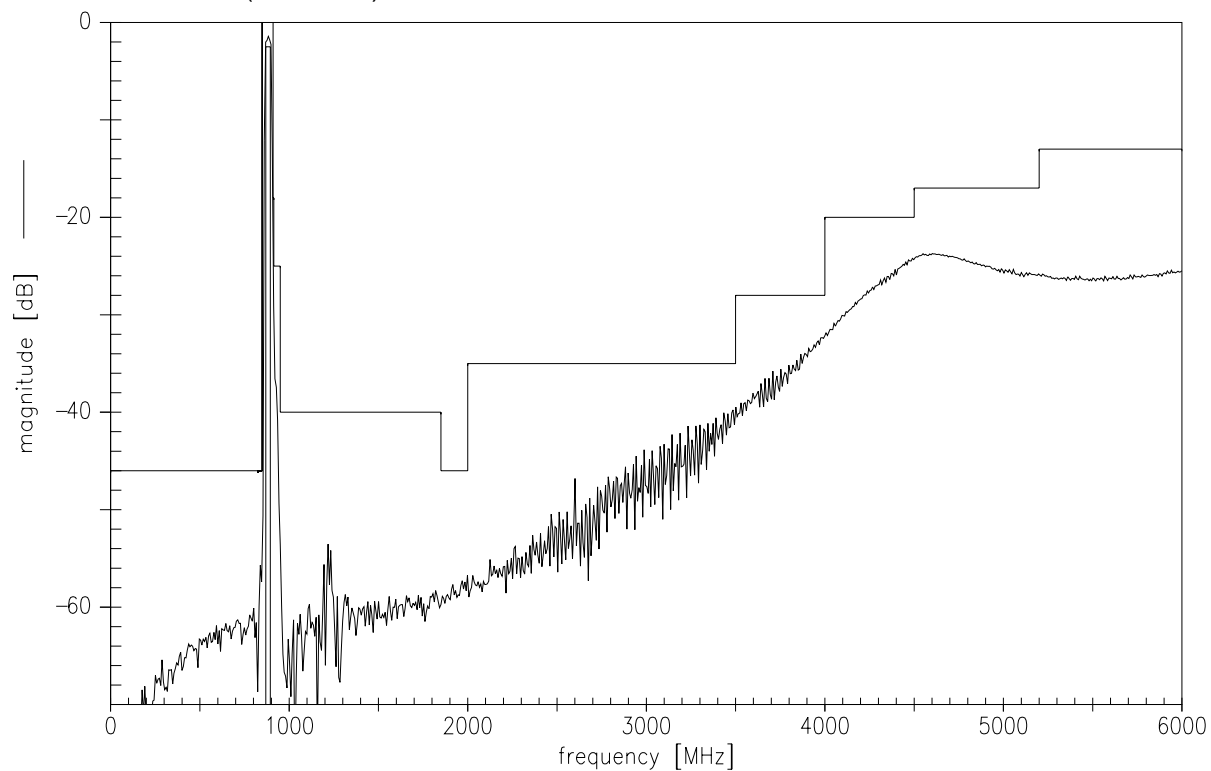
Operable temperature range	T	-40/+85	°C	machine model, 10 pulses
Storage temperature range	T _{stg}	-40/+85	°C	
DC voltage	V _{DC}	5	V	
ESD voltage	V _{ESD}	100 ¹⁾	V	
Input power	P _{IN}	15	dBm	

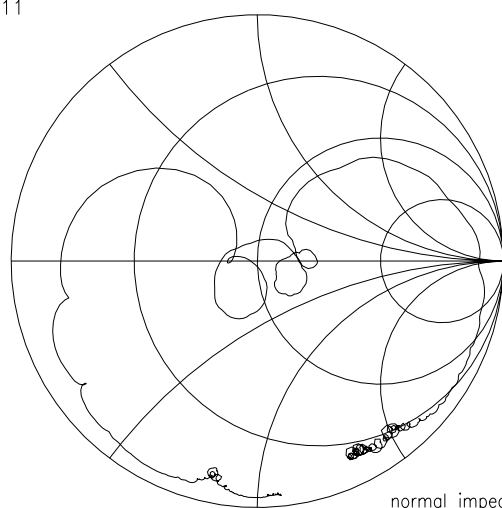
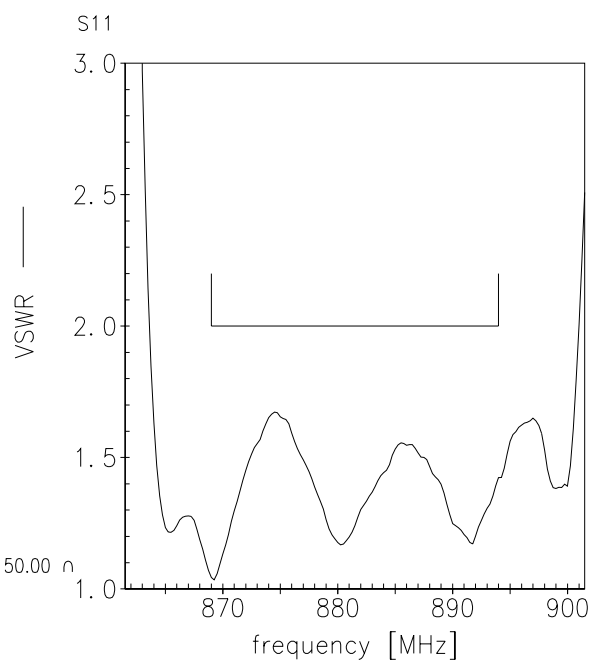
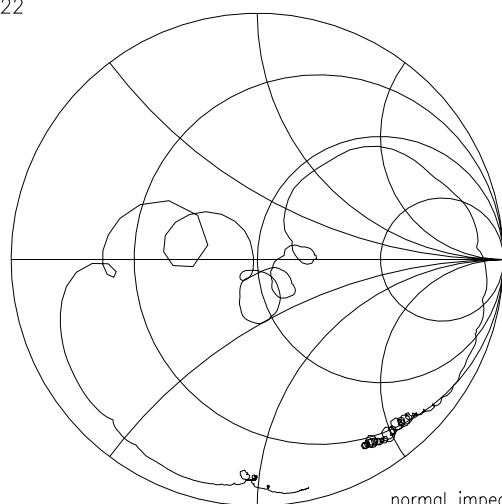
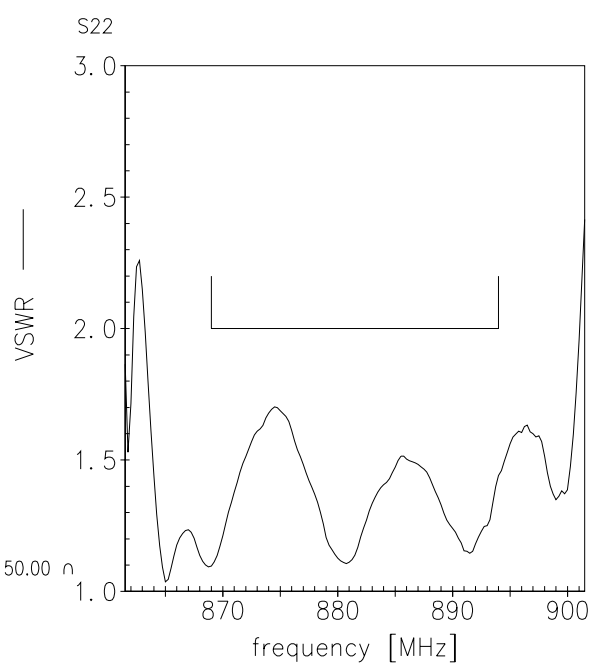
¹⁾ acc. to JESD22-A115A (machine model), 10 negative & 10 positive pulses.

Transfer function



Transfer function (wideband)



S_{11}

normal impedance: 50.00 Ω

 S_{22}

normal impedance: 50.00 Ω


**SAW Components****B9439****SAW Rx filter****881.5 MHz**

Data sheet

**References**

Type	B9439
Ordering code	B39881B9439M410
Marking and package	C61157-A8-A3
Packaging	F61074-V8212-Z000
Date codes	L_1126
S-parameters	B9439_NB.s2p B9439_WB.s2p
Soldering profile	S_6001
RoHS compatible	defined as compatible with the following documents: "DIRECTIVE 2002/95/EC OF THE EUROPEAN PARLIAMENT AND OF THE COUNCIL of 27 January 2003 on the restriction of the use of certain hazardous substances in electrical and electronic equipment. 2005/618/EC from April 18th, 2005, amending Directive 2002/95/EC of the European Parliament and of the Council for the purposes of establishing the maximum concentration values for certain hazardous substances in electrical and electronic equipment."
Moldability	Before using in overmolding environment, please contact your EPCOS sales office.

For further information please contact your local EPCOS sales office or visit our webpage at www.epcos.com .

**Published by EPCOS AG
Surface Acoustic Wave Components Division
P.O. Box 80 17 09, 81617 Munich, GERMANY**

© EPCOS AG 2007. This brochure replaces the previous edition.

For questions on technology, prices and delivery please contact the Sales Offices of EPCOS AG or the international Representatives.

Due to technical requirements components may contain dangerous substances. For information on the type in question please also contact one of our Sales Offices.

Please read *cautions and warnings and important notes* at the end of this document.



Important notes

The following applies to all products named in this publication:

1. Some parts of this publication contain **statements about the suitability of our products for certain areas of application**. These statements are based on our knowledge of typical requirements that are often placed on our products in the areas of application concerned. We nevertheless expressly point out **that such statements cannot be regarded as binding statements about the suitability of our products for a particular customer application**. As a rule, EPCOS is either unfamiliar with individual customer applications or less familiar with them than the customers themselves. For these reasons, it is always ultimately incumbent on the customer to check and decide whether an EPCOS product with the properties described in the product specification is suitable for use in a particular customer application.
2. We also point out that **in individual cases, a malfunction of passive electronic components or failure before the end of their usual service life cannot be completely ruled out in the current state of the art, even if they are operated as specified**. In customer applications requiring a very high level of operational safety and especially in customer applications in which the malfunction or failure of a passive electronic component could endanger human life or health (e.g. in accident prevention or life-saving systems), it must therefore be ensured by means of suitable design of the customer application or other action taken by the customer (e.g. installation of protective circuitry or redundancy) that no injury or damage is sustained by third parties in the event of malfunction or failure of a passive electronic component.
3. The warnings, cautions and product-specific notes must be observed.
4. In order to satisfy certain technical requirements, **some of the products described in this publication may contain substances subject to restrictions in certain jurisdictions (e.g. because they are classed as "hazardous")**. Useful information on this will be found in our Material Data Sheets on the Internet (www.epcos.com/material). Should you have any more detailed questions, please contact our sales offices.
5. We constantly strive to improve our products. Consequently, **the products described in this publication may change from time to time**. The same is true of the corresponding product specifications. Please check therefore to what extent product descriptions and specifications contained in this publication are still applicable before or when you place an order. We also **reserve the right to discontinue production and delivery of products**. Consequently, we cannot guarantee that all products named in this publication will always be available.
6. Unless otherwise agreed in individual contracts, **all orders are subject to the current version of the "General Terms of Delivery for Products and Services in the Electrical Industry" published by the German Electrical and Electronics Industry Association (ZVEI)**.
7. The trade names EPCOS, CeraDiode, CSSP, PhaseCap, PhaseMod, SIFI, SIKOREL, SilverCap, SIMID, SIOV, SIP5D, SIP5K, TOPcap, UltraCap, WindCap are **trademarks registered or pending** in Europe and in other countries. Further information will be found on the Internet at www.epcos.com/trademarks.