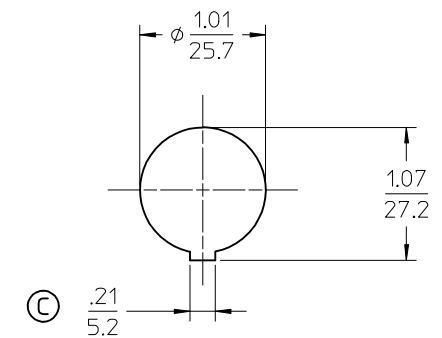
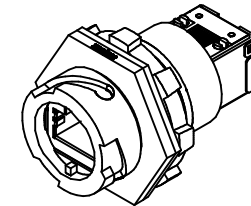
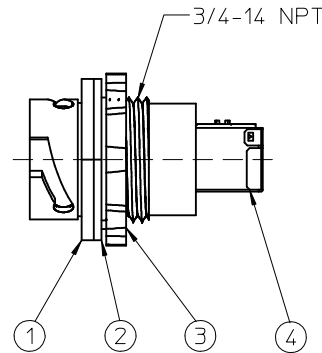
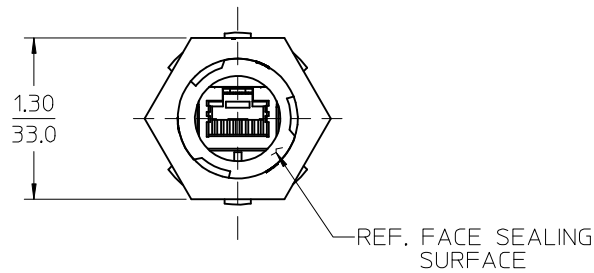
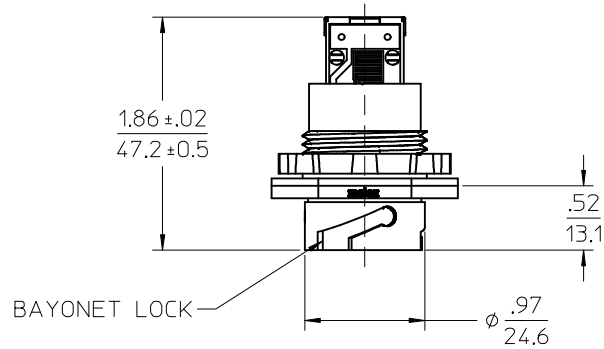



- © NOTES:
1. MATERIAL: SEE TABLE
  2. FINISHES: SEE TABLE
  3. PRODUCT SPECIFICATION: PPS.84.003
  4. PCB ASSEMBLY PUSHOUT : 20 LBS. MIN.
  5. COMPONENTS ARE RoHS COMPLIANT OR COMPLIANT BY EXCEPTION



REF. PANEL MOUNT  
THRU HOLE

					REV'D & REDRAWN EC NO: ETC2007-0100 DRAWN BY: R. STONE 2006/10/02 CHKD: J. MACNEIL 2006/10/02 APPR: J. MACNEIL 2006/10/02	C	REV	DESCRIPTION	QUALITY SYMBOLS  ▽=0 ◻=0	GENERAL TOLERANCES (UNLESS SPECIFIED)		DIMENSION STYLE IN/MM		SCALE 1:1	DESIGN UNITS INCH	THIRD ANGLE PROJECTION 												
				mm						INCH		DRAWN BY R. STONE		DATE 2002/05/14		TITLE RECEPTACLE, RJ-45 PCB, PANEL MOUNT INDUSTRIAL ETHERNET  MOLEX INCORPORATED												
4		1		PCB, RJ-45, DUAL RECEPTACLE						PCB,MOD,JACK		4 PLACES		± ---						± ---		CHECKED BY S. GILBERT		DATE 2002/11/11				
3		1		LOCK-NUT						STEEL		ZINC PLATED		3 PLACES						± ---		± ---		APPROVED BY P. WALTZ		DATE 2002/11/12		
2		1		PANEL GASKET						NEOPRENE		BLACK		2 PLACES						± ---		± .01						
1		1		RECEPTACLE HOUSING						PBT		BLACK		1 PLACE		± 0.25		± ---										
																ANGULAR ±1/2°												
DRAFT WHERE APPLICABLE MUST REMAIN WITHIN DIMENSIONS												MATERIAL NO. 847000001		DOCUMENT NO. SD-84700-007		SHEET NO. 1 OF 1												
										SIZE B		THIS DRAWING CONTAINS INFORMATION THAT IS PROPRIETARY TO MOLEX INCORPORATED AND SHOULD NOT BE USED WITHOUT WRITTEN PERMISSION																

1b\_frame\_B\_P\_ME\_T  
Rev. D 2004/04/02

9

8

7

6

5

4

3

2

1