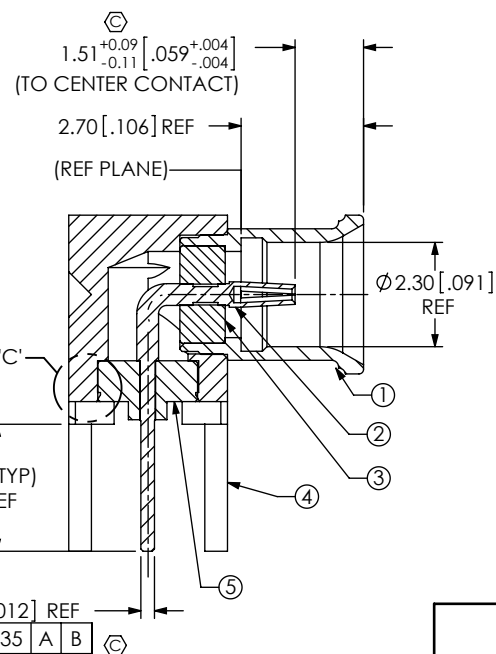
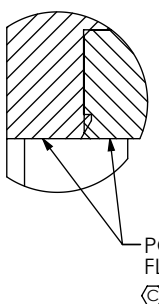
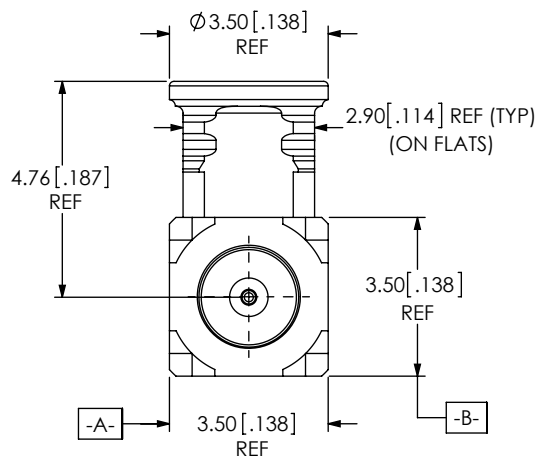
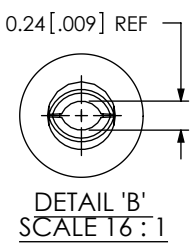
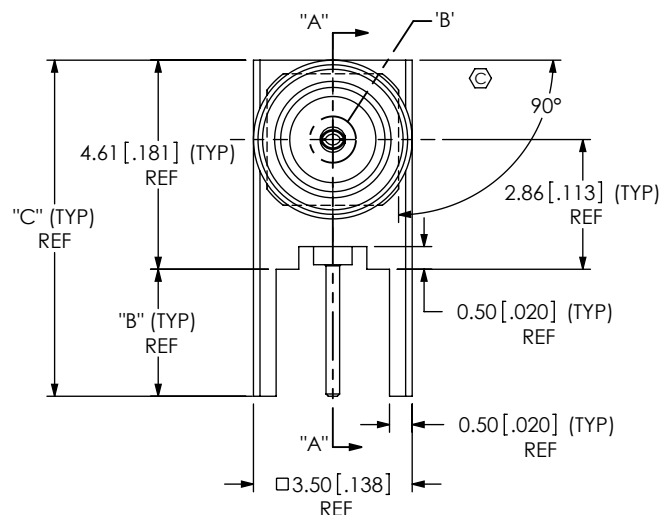


DO NOT
SCALE FROM
THIS PRINT

TABLE 3					
SERIES	"B"	"C"	"D"	GRF7-J-P-X-RA-THX-BDY	GRF7-J-P-X-RA-THX-SKT
-TH1	2.80 [0.110]	7.41 [0.292]	2.80 [0.110]	GRF7-J-P-X-RA-TH1-BDY	GRF7-J-P-X-RA-TH1-SKT
-TH2	2.20 [0.087]	6.81 [0.268]	2.20 [0.087]	GRF7-J-P-X-RA-TH2-BDY	GRF7-J-P-X-RA-TH2-SKT
-TH3	1.60 [0.063]	6.21 [0.244]	1.60 [0.063]	GRF7-J-P-X-RA-TH3-BDY	GRF7-J-P-X-RA-TH3-SKT

TABLE 1			
ITEM	COMPONENT	-HF	-GF
1	SHELL	GRF7V-J-P-F-RA-SHL	
2	SOCKET (SEE TABLE 3)	GRF7-J-P-H-RA-TH1-SKT	GRF7-J-P-G-RA-TH1-SKT
3	INSULATOR 1	GRF7-J-P-RA-INS-001	
4	BODY (SEE TABLE 3)	GRF7-J-P-F-RA-THX-BDY	GRF7-J-P-N-RA-THX-BDY
5	INSULATOR 2	GRF7-J-P-RA-INS-003	



SECTION "A"-A"

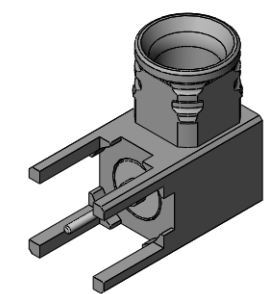


FIG 1
MMCX7-J-P-XX-RA-TH1-ASM
SHOWN
-TH2 & -TH3 IS SIMILAR

MMCX7-J-P-XX-RA-THX

LEAD STYLE
-1: .093 BOARD
-2: .062 BOARD
-3: .039 BOARD
(SEE TABLE 3)

TERMINATION
-TH: THROUGH HOLE

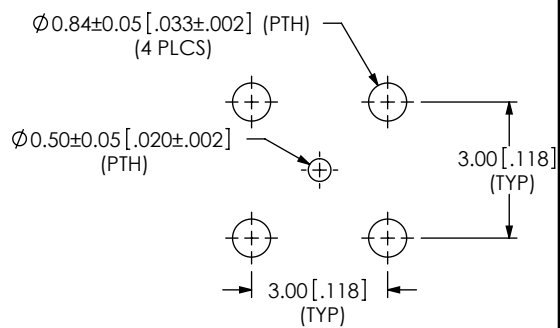
ORIENTATION
-RA: RIGHT ANGLE

PLATING SPECIFICATION
-HF: 30μ" GOLD CENTER CONTACT,
3μ" GOLD OUTER CONTACT
-GF: 10μ" GOLD CENTER CONTACT,
3μ" GOLD OUTER CONTACT,
100μ" NICKEL REMAINING PARTS
(SEE TABLE 1)

GENDER
-J: JACK

TYPE
-P: PCB

RECOMMENDED PCB LAYOUT



NOTES:

1. Ⓢ REPRESENTS A CRITICAL DIMENSION.
2. PRODUCT TO BE PACKAGED PER PACKING STANDARD CO-RF-WI-3040-M.
TRAY: TY-SMA001-1
COVER: TY-SMA001-2
100 PARTS PER TRAY (1 PARTS PER POCKET)

UNLESS OTHERWISE SPECIFIED,
DIMENSIONS ARE IN
MILLIMETERS [INCHES].
TOLERANCES ARE:

DECIMALS ANGLES
X.X: ±0.3 [.01] 5°
X.XX: ±0.13 [.005]
X.XXX: ±0.051 [.0020]

PROPRIETARY NOTE
THIS DOCUMENT CONTAINS INFORMATION
CONFIDENTIAL AND PROPRIETARY TO
SAMTEC, INC. AND SHALL NOT BE REPRODUCED
OR TRANSFERRED TO OTHER DOCUMENTS OR
DISCLOSED TO OTHERS OR USED FOR ANY
PURPOSE OTHER THAN THAT WHICH IT WAS
OBTAINED WITHOUT THE EXPRESSED WRITTEN
CONSENT OF SAMTEC, INC.

MATERIAL: DO NOT SCALE DRAWING SHEET SCALE: 6:1
SHELL / BODY: BRASS
SOCKET: BeCu
INSULATOR1 & INSULATOR2: PTFE

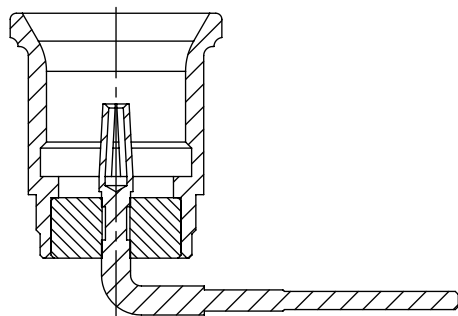


520 PARK EAST BLVD, NEW ALBANY, IN 47150
PHONE: 812-944-6733 FAX: 812-948-5047
e-Mail: info@SAMTEC.com code: 55322

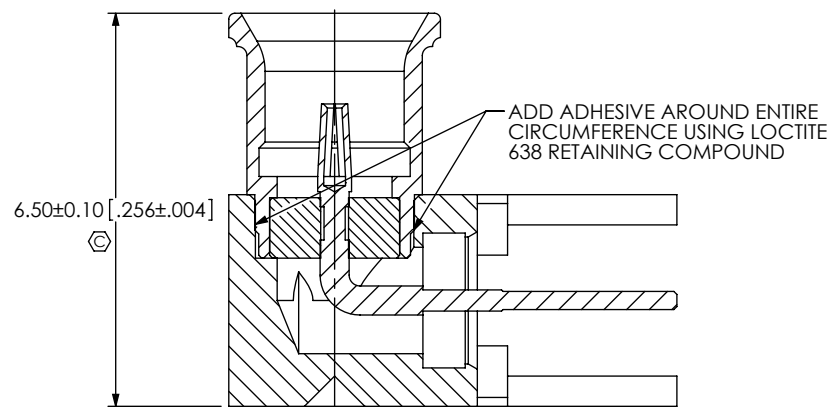
DESCRIPTION:
MMCX RIGHT ANGLE THROUGH HOLE, JACK- 75 OHM

DWG. NO.
MMCX7-J-P-XX-RA-THX

BY: ALVINW 10/08/2011 SHEET 1 OF 2



IN PROCESS 1
INSERT INSULATOR 1 & SOCKET



IN PROCESS 2
PRESS / INSERT SHELL, INSULATOR 1, SOCKET
INTO BODY

PROPRIETARY NOTE

THIS DOCUMENT CONTAINS INFORMATION
CONFIDENTIAL AND PROPRIETARY TO
SAMTEC, INC. AND SHALL NOT BE REPRODUCED
OR TRANSFERRED TO OTHER DOCUMENTS OR
DISCLOSED TO OTHERS OR USED FOR ANY
PURPOSE OTHER THAN THAT WHICH IT WAS
OBTAINED WITHOUT THE EXPRESSED WRITTEN
CONSENT OF SAMTEC, INC.

DO NOT SCALE DRAWING

SHEET SCALE: 8:1

samtec

520 PARK EAST BLVD, NEW ALBANY, IN 47150
PHONE: 812-944-6733 FAX: 812-948-5047
e-Mail: info@SAMTEC.com code: 55322

DESCRIPTION:
MMCX RIGHT ANGLE THROUGH HOLE, JACK- 75 OHM

DWG. NO. **MMCX7-J-P-XX-RA-THX**

BY: ALVINW 10/08/2011 SHEET 2 OF 2