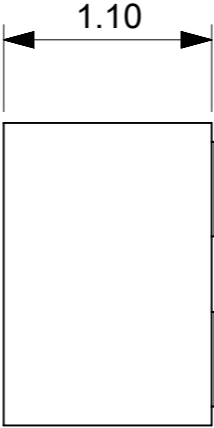
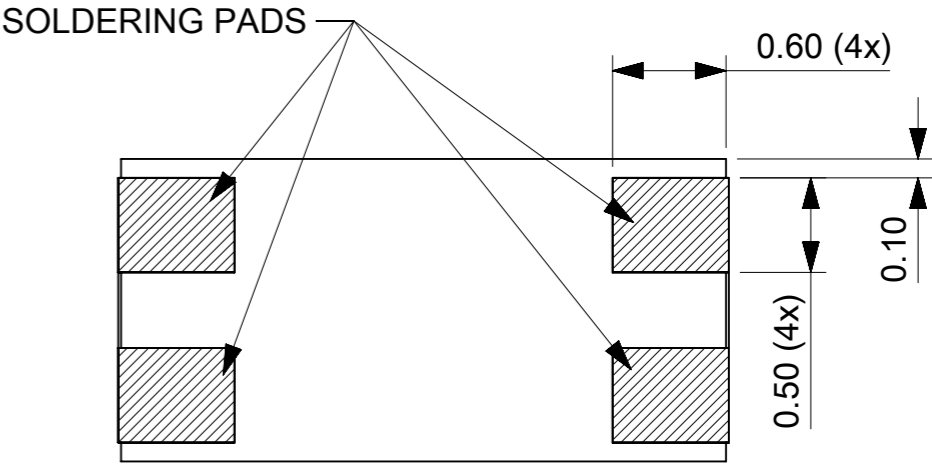


FRONT VIEW

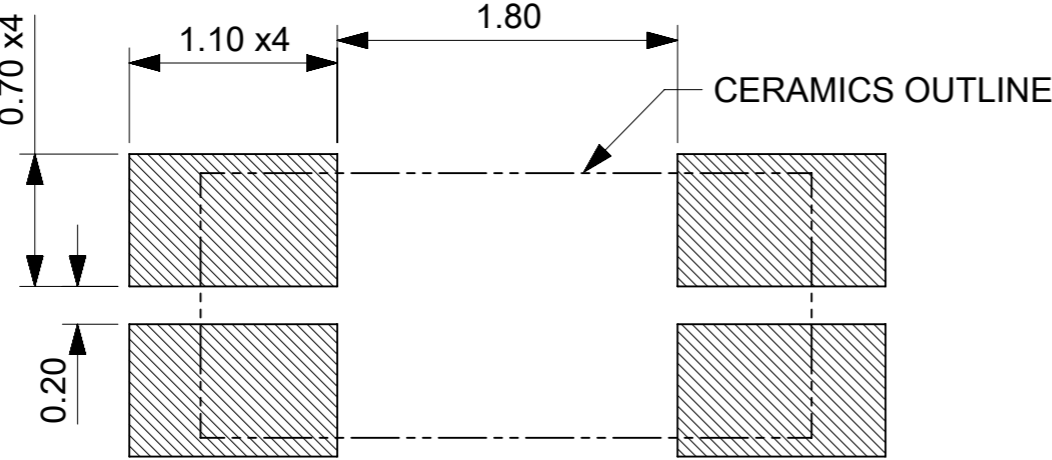


RIGHT VIEW

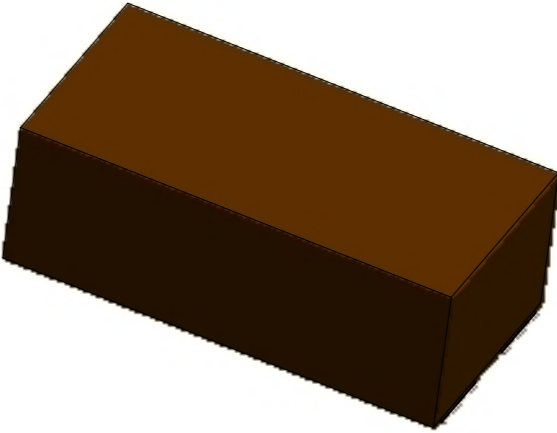


BACK VIEW

SYMMETRICAL PATTERN  
CAN BE PLACED ROTATING 180°



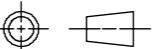
RECOMMENDED PCB LAYOUT



3D VIEW

- NOTES:
- 1. BODY MATERIAL: CERAMIC.
  - 2. PATTERN: Ag PLATED THICKNESS 4um~15um
  - 3. PACKAGE SPEC. REFER TO PK OF 2030060001
  - 4. PRODUCT SPEC. REFER TO PS OF 2030060001
  - 5. APPLICATION SPEC. REFER TO AS OF 2030060001

RELEASE STATUS	P1	RELEASE DATE	27.10.2017	09:52:13
----------------	----	--------------	------------	----------

THIS DRAWING CONTAINS INFORMATION THAT IS PROPRIETARY TO MOLEX ELECTRONIC TECHNOLOGIES, LLC AND SHOULD NOT BE USED WITHOUT WRITTEN PERMISSION																	
EC NO: 167324 DRWN: KCHENG06 CHK'D: CXU11 APPR: XJSSONG	2017/10/26 2017/10/27 2017/10/27	GENERAL TOLERANCES (UNLESS SPECIFIED)			DIMENSION UNITS		SCALE		molex®								
		ANGULAR TOL ± °			MM		25:1										
		4 PLACES		±	DRWN BY		DATE		SD FOR 2.4/5GHZ CERAMIC SMT ANTENNA								
					TZHOU07		2017/01/09										
		3 PLACES		± 0.1	CHK'D BY		DATE										
		2 PLACES		± 0.2	ZLRAO		2017/02/14		PRODUCT CUSTOMER DRAWING								
		1 PLACE		± 0.3	APPR BY		DATE										
		0 PLACES		±	CYU08		2017/02/14										
		DRAFT WHERE APPLICABLE MUST REMAIN WITHIN DIMENSIONS			DRAWING SIZE		THIRD ANGLE PROJECTION			SERIES		MATERIAL NUMBER			CUSTOMER		
					A3					203006		2030060001					
B1		REV							DOCUMENT NUMBER			DOC TYPE		DOC PART		SHEET NUMBER	
									2030060001			PSD		SD		1 OF 1	