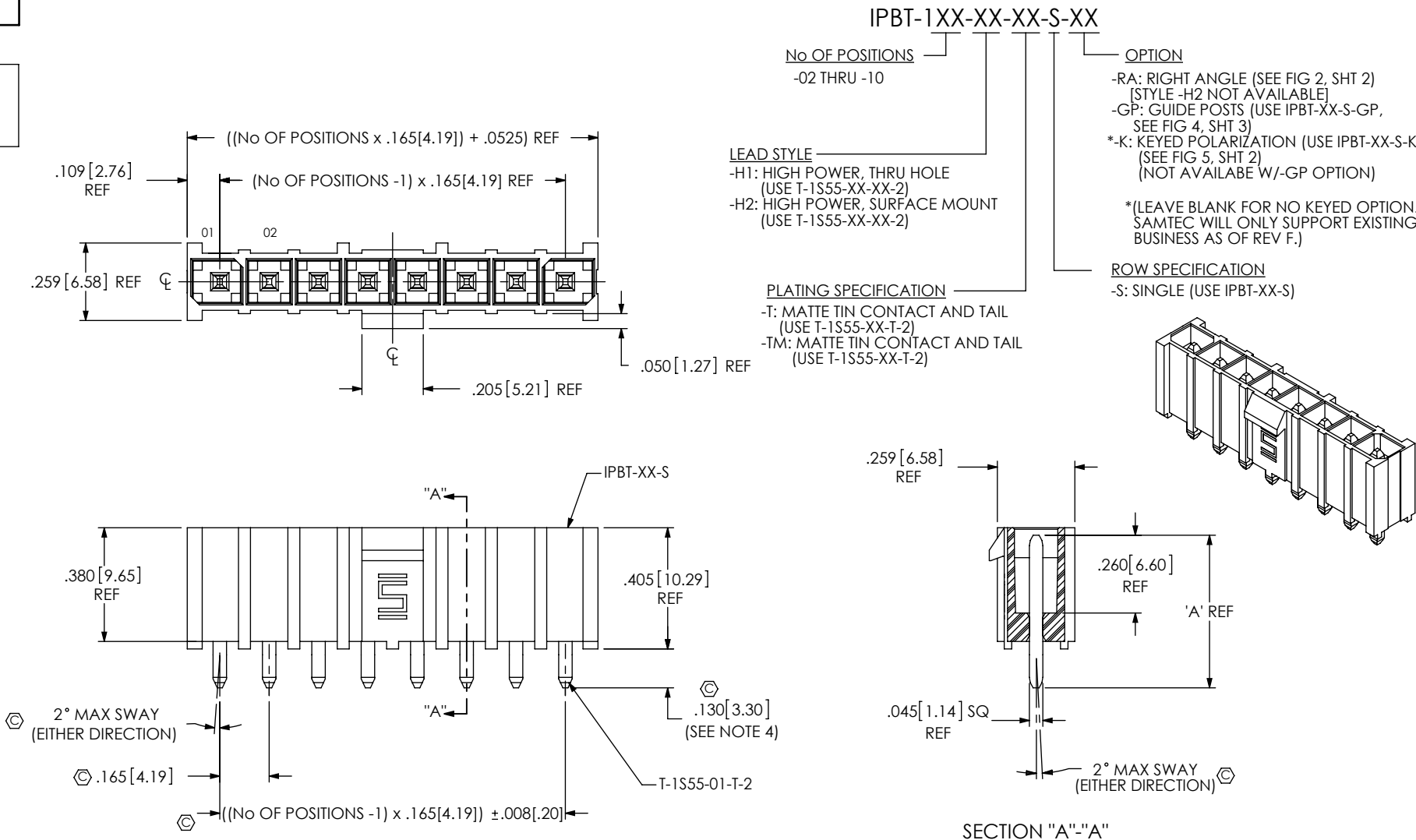


DO NOT
SCALE FROM
THIS PRINT



NOTES:

1. ⌀ REPRESENTS A CRITICAL DIMENSION.
2. PARTS TO BE MOLDED TO POSITION.
3. MINIMUM TERMINAL RETENTION: 1 LB[4.45 N].
4. POST MUST BE WITHIN .005[.13] OF EACH OTHER.

FIG 1
IPBT-108-H1-XX-S SHOWN

TABLE 1			
PART NUMBER	BODY	TERMINAL	"A" REF
IPBT-1XX-H1-XX-S	IPBT-XX-S	T-1S55-01-T-2	.5100
IPBT-1XX-H2-XX-S	IPBT-XX-S	T-1S55-02-T-2	.6071
IPBT-1XX-H1-XX-S-RA	IPBT-XX-S	T-1S55-03-T-2	.6861
IPBT-1XX-H1-XX-S-RA-GP	IPBT-XX-S-GP	T-1S55-03-T-2	.6861
IPBT-1XX-H1-XX-S-GP	IPBT-XX-S-GP	T-1S55-01-T-2	.5100
IPBT-1XX-H2-XX-S-GP	IPBT-XX-S-GP	T-1S55-02-T-2	.6071

UNLESS OTHERWISE SPECIFIED, DIMENSIONS ARE IN INCHES. TOLERANCES ARE:

DECIMALS	ANGLES
.XX: $\pm .01[.3]$	$\pm 2^\circ$
.XXX: $\pm .005[.13]$	
.XXXX: $\pm .0020[.051]$	

PROPRIETARY NOTE
THIS DOCUMENT CONTAINS INFORMATION CONFIDENTIAL AND PROPRIETARY TO SAMTEC, INC. AND SHALL NOT BE REPRODUCED OR TRANSFERRED TO OTHER DOCUMENTS OR DISCLOSED TO OTHERS OR USED FOR ANY PURPOSE OTHER THAN THAT WHICH IT WAS OBTAINED WITHOUT THE EXPRESSED WRITTEN CONSENT OF SAMTEC, INC.

MATERIAL: DO NOT SCALE DRAWING SHEET SCALE: 2:1
INSULATOR: LCP, UL 94 VO COLOR: BLACK
TERMINAL: HIGH COPPER ALLOY

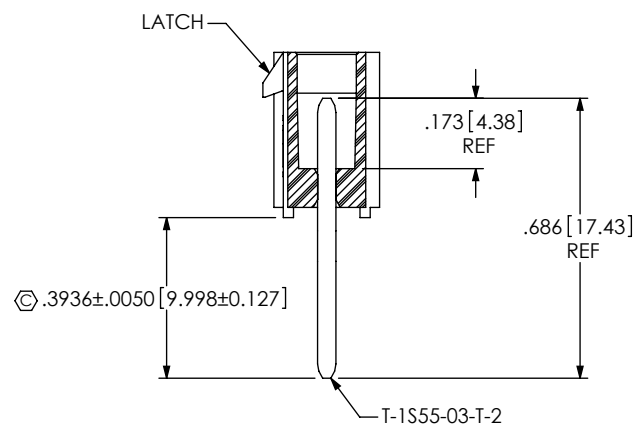
520 PARK EAST BLVD, NEW ALBANY, IN 47150
PHONE: 812-944-6733 FAX: 812-948-5047
e-Mail: info@SAMTEC.com code 55322

DESCRIPTION:
.165 SINGLE ROW TERMINAL ASSEMBLY

DWG. NO.
IPBT-1XX-XX-XX-S-XX

BY: KEVIN B 05/06/03 SHEET 1 OF 3

IN-PROCESS 1



IN-PROCESS 2

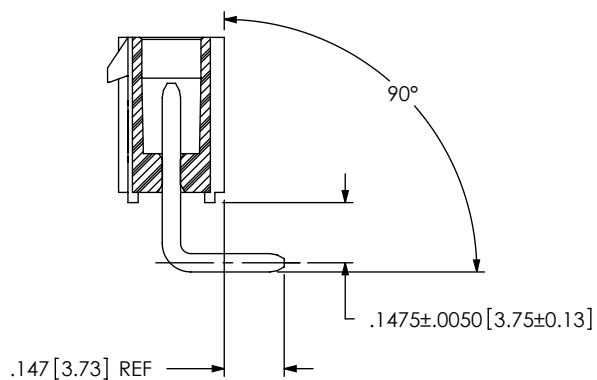


FIG 5

-K: POLARIZATION
(IPBT-105-H1-XX-S-K SHOWN)
(SAME AS FIG 1 UNLESS OTHERWISE STATED)

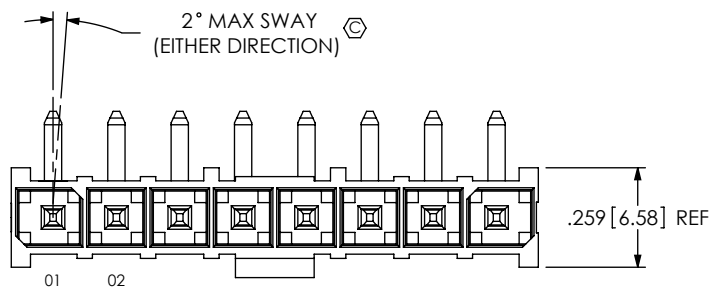
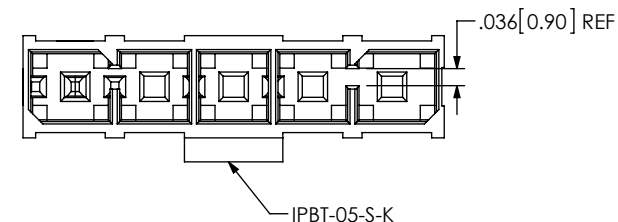
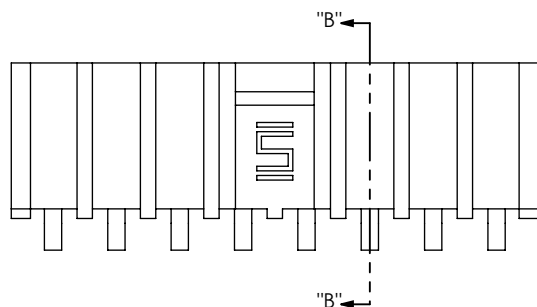
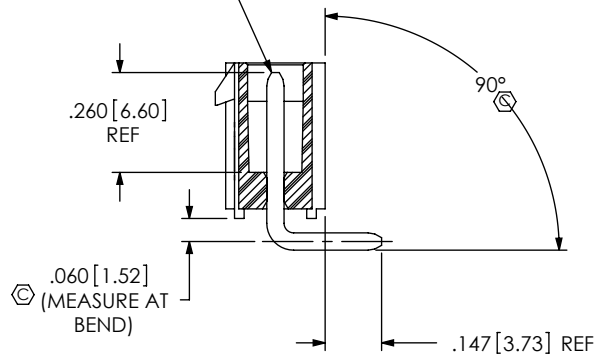


FIG 2

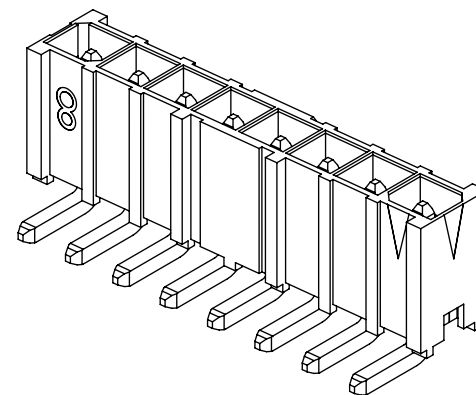
-RA: RIGHT ANGLE
(IPBT-108-H1-XX-S-RA SHOWN)
(DIFFERENT AS SHOWN, OTHERWISE SAME AS FIG 1)
(STYLE -H2 NOT AVAILABLE)



T-1S55-03-T-2



SECTION "B"-"B"



F:\DWG\MISC\MKTG\IPBT-1XX-XX-XX-S-XX-MKT.SLDDRW

PROPRIETARY NOTE

THIS DOCUMENT CONTAINS INFORMATION
CONFIDENTIAL AND PROPRIETARY TO
SAMTEC, INC. AND SHALL NOT BE REPRODUCED
OR TRANSFERRED TO OTHER DOCUMENTS OR
DISCLOSED TO OTHERS OR USED FOR ANY
PURPOSE OTHER THAN THAT WHICH IT WAS
OBTAINED WITHOUT THE EXPRESSED WRITTEN
CONSENT OF SAMTEC, INC.

DO NOT SCALE DRAWING

SHEET SCALE: 2:1

samtec

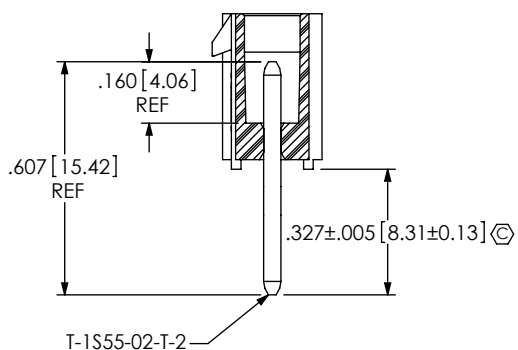
520 PARK EAST BLVD, NEW ALBANY, IN 47150
PHONE: 812-944-6733 FAX: 812-948-5047
e-Mail: info@SAMTEC.com code 55322

DESCRIPTION:
.165 SINGLE ROW TERMINAL ASSEMBLY

DWG. NO.
IPBT-1XX-XX-XX-S-XX

BY: KEVIN B 05/06/03 SHEET 2 OF 3

IN-PROCESS 1



IN-PROCESS 2

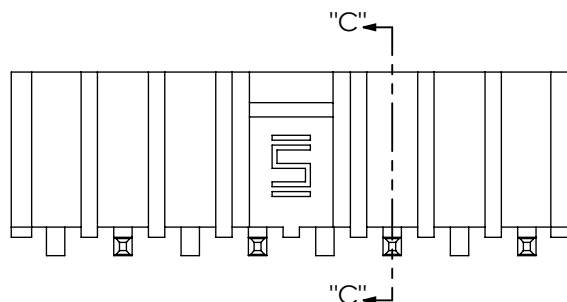
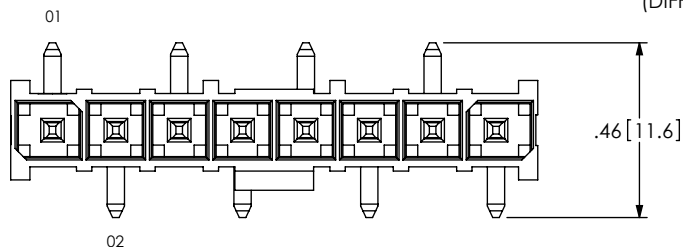
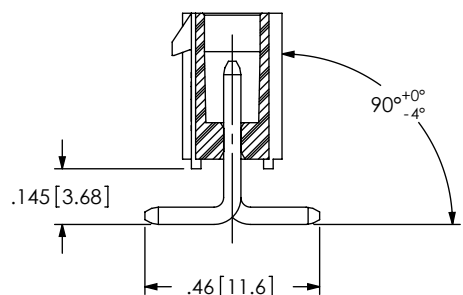
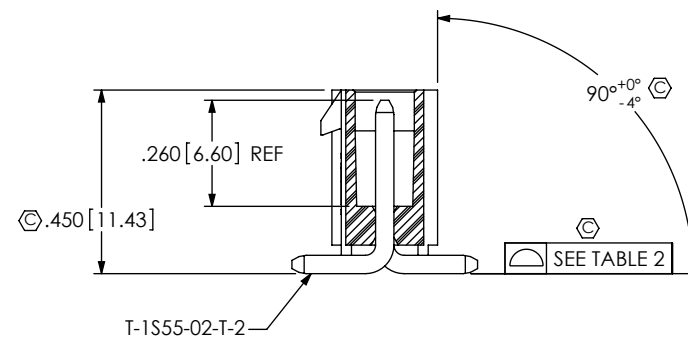
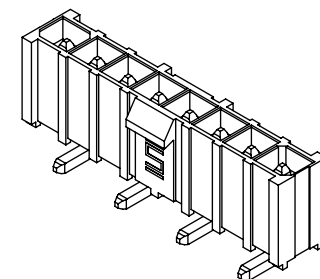


TABLE 2	
No OF POSITIONS	COPLANARITY
-02 THRU -08	.004[.10]
-09 & -10	.006[.15]

FIG 3

STYLE -H2: SURFACE MOUNT
(IPBT-108-H2-XX-S SHOWN)
(DIFFERENT AS SHOWN, OTHERWISE SAME AS FIG 1)

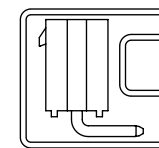


SECTION "C"-"C"

PACKAGING VIEW

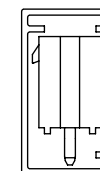
[PARTS TO HAVE POSITION #1 LOADED IN
SAME DIRECTION AS ARROW ON TUBE]

RIGHT ANGLE



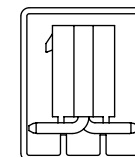
TUBE: PT-1-24-01-40
PLUG: TP-13

THROUGH HOLE



TUBE: PT-1-24-06-51
PLUG: TP-07

SURFACE MOUNT

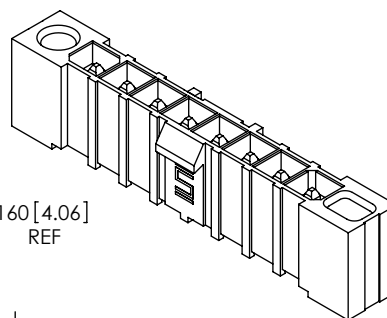
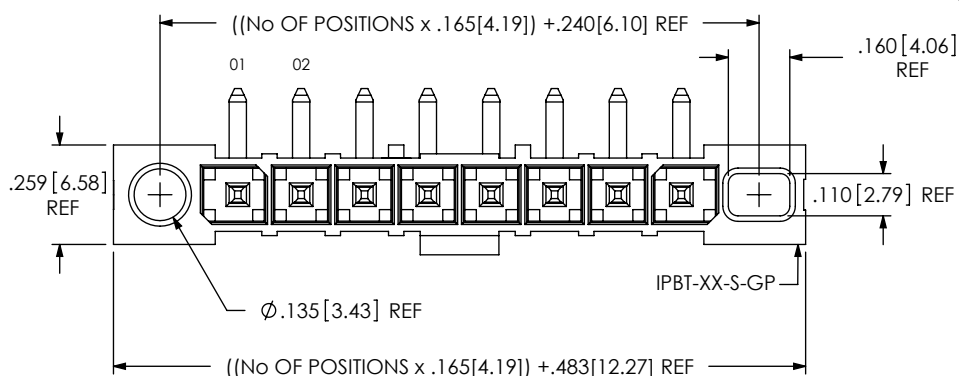


TUBE: PT-1-24-01-58
PLUG: TP-13

F:\DWG\MISC\MKTG\IPBT-1XX-XX-XX-S-XX-MKT.SLDDRW

FIG 4

-GP: GUIDE POSTS
(IPBT-108-H1-XX-S-RA-GP SHOWN)
(DIFFERENT AS SHOWN, OTHERWISE SAME AS FIG 1, 2 OR 3)
(AVAILABLE WITH THROUGH HOLE, SURFACE MOUNT & -RA OPTION)



PROPRIETARY NOTE

THIS DOCUMENT CONTAINS INFORMATION
CONFIDENTIAL AND PROPRIETARY TO
SAMTEC, INC. AND SHALL NOT BE REPRODUCED
OR TRANSFERRED TO OTHER DOCUMENTS OR
DISCLOSED TO OTHERS OR USED FOR ANY
PURPOSE OTHER THAN THAT WHICH IT WAS
OBTAINED WITHOUT THE EXPRESSED WRITTEN
CONSENT OF SAMTEC, INC.

DO NOT SCALE DRAWING

SHEET SCALE: 2:1

samtec

520 PARK EAST BLVD, NEW ALBANY, IN 47150
PHONE: 812-944-6733 FAX: 812-948-5047
e-Mail: info@SAMTEC.com code 55322

DESCRIPTION: .165 SINGLE ROW TERMINAL ASSEMBLY

DWG. NO. IPBT-1XX-XX-XX-S-XX

BY: KEVIN B 05/06/03 SHEET 3 OF 3