

INTRODUCTION:

Adam Tech BHR Series .100" Box Headers are a dual row shrouded header for use with dual row IDC female socket connectors. Our low profile, space saving design has a center slot for the socket's polarization bump. Adam Tech's Box Headers are available in Straight PCB Mount, Right Angle PCB Mount and SMT Mounting. Plating options include choice of Gold, Tin or Selective Gold. SMT versions are manufactured with a Hi-Temp insulator. Additional options include latches and custom pin lengths.

FEATURES:

Superior low profile design
Slot for IDC socket Polarization bump
Straight PCB, Right Angle PCB and SMT versions
Gold, Tin or Selective Gold plating
Options include Elevated types and integral latches
Hi-Temp insulator available

MATING SOCKETS:

Adam Tech .100" X .100" dual row IDC sockets

SPECIFICATIONS:

Material:

Insulator: PBT, rated UL94V-0
(Hi-Temp Nylon for surface mount)

Insulator Color: Black (Gray optional)

Contacts: Brass

Plating:

U = Gold flash (30u" optional) over nickel underplate
SG = Gold flash (30u" optional) over nickel underplate on contact area, tin over copper underplate on tails.
T = Tin over copper underplate overall

Electrical:

Operating voltage: 250V AC max.
Current rating: 1 Amp max
Contact resistance: 20 mΩ max. initial
Insulation resistance: 5000 MΩ min.
Dielectric withstanding voltage: 1000V AC for 1 minute

Mechanical:

Mating durability: 500 cycles min.

Temperature Rating:

Operating temperature: -55°C to +105°C

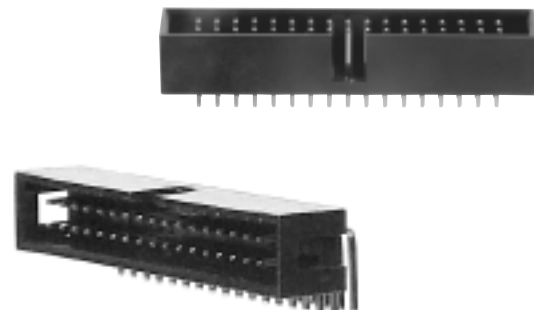
PACKAGING:

Anti-ESD plastic trays

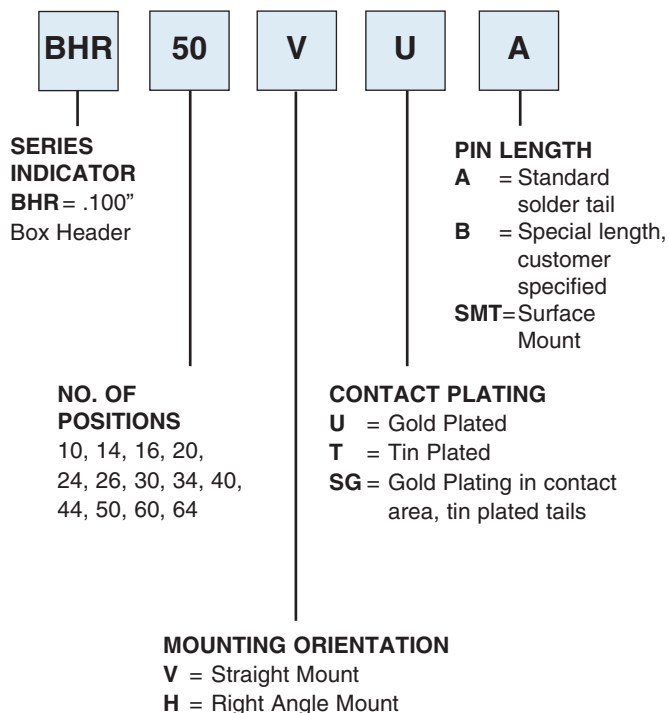
SAFETY AGENCY APPROVALS:

UL Recognized File No. E224053

CSA Certified File No. LR1578596



ORDERING INFORMATION



OPTIONS:

Add designator(s) to end of part number
30 = 30 pin gold plating in contact area
GY = Gray color insulator
M = Metal latches
RC = RoHS compliant lead-free product with Hi-Temp insulator

INTRODUCTION:

Adam Tech PC Series International Power Cordset series offers a wide range of cordsets with numerous international approvals for worldwide applications. Each is approved for use by all of the major safety organizations such as UL, CSA & VDE. This series is available in a wide range of cord types with choice of wire gauge and various shielding options. We offer numerous standard Power Cords designed to comply with specific world market requirements and an unlimited variety of custom cords manufactured to our customers specifications.

FEATURES:

Sturdy, high reliability designs
Worldwide Safety agency approvals
Standard and Custom Power Cords
Choice of cord types and shielding options

MATING CONNECTORS:

Adam Tech IEC series & power line filters, all international IEC 60320 power connectors.

SPECIFICATIONS:

Material:

Outer Jacket Color: Black, other colors optional

Temperature Rating:

Outer Jacket Temperature: 60°C (75°C and 105°C optional)

PACKAGING:

Corrugated boxes

SAFETY AGENCY APPROVALS:

UL/CSA Recognized File No. E167153
VDE Approved



ORDERING INFORMATION

PC

SERIES INDICATOR
PC = Power Cord

01 02

PLUG & SOCKET OPTIONS

- 01** = American, NEMA 5-15P Straight
- 01H** = North American Hospital Grade NEMA 5-15
- 01HB** = Color Black
- 01HC** = Color Clear
- 01HG** = Color Gray
- 02** = International Female, IEC C13 straight
- 03** = International Female, IEC C13 R/A
- 04** = International Male, IEC C14
- 06** = European, CEE 7/7 Straight
- 07** = European, CEE 7/7 R/A
- 08** = United Kingdom Fused, BS 1363
- 10** = American, NEMA 1-15P Straight Non Polarized
- 11** = Swiss, SEV 1011 Straight
- 12** = Italian, CEI 23-16 Grounded
- 13** = Australian, AS 3112 Grounded

- 15** = Jacket and Conductor Stripped, Jacket 2.0" / Conductors 0.37" (Consult factory for custom jacket and conductor strip lengths)
- 16** = Blunt Cut
- 17** = International Female, IEC C7
- 25** = American, NEMA 5-15P R/A
- 28** = European, CEE 7/16 Straight
- 29** = Italian, CEI 23-16
- 30** = International Female, IEC C5
- 31** = Danish, SRAF
- 32** = South African, BS-546
- 33** = South African, BS-546 R/A
- 34** = Israel, SI-32 R/A
- 35** = Australian, AS 3112
- 38** = European, CEE 7/17 Straight

060

LENGTH
(Specified in ft/in)
060 = 6 FT 0 IN
076 = 7 FT 6 IN
State length as required

A

CORD TYPE
A = SVT, 60°C
B = SJT, 60°C
C = SJTW
D = SJTW-A
E = SPT-1
F = SPT-2
G = SPT-3
H = H03VV-F 3X0.75mm
I = H05VV-F 3X0.75mm
J = H05VV-F 3X1.0mm
K = H03VV-H 2X0.75mm
L = H05VV-F 3X0.75mm
M = SPT-1 NON-INTEGRAL
N = SPT-2 NON-INTEGRAL
R = SJT, CEE
S = SVT, CEE
Q = SJT, 105°C
V = SVT, 105°C

C

WIRE AWG
A = 14 AWG
B = 16 AWG
C = 18 AWG
G = H03 & H05

0

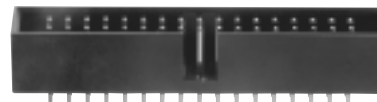
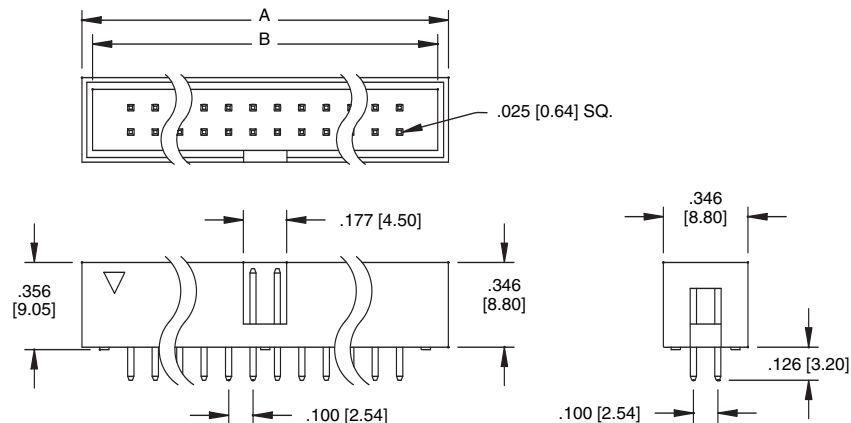
SHIELDING
0 = Non Shielded
F = Foil Shield
S = Copper Braid and Foil Shield

3

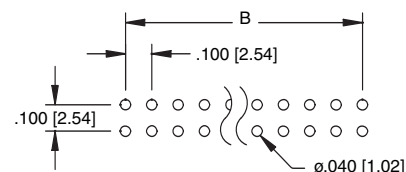
JACKET COLOR
3 = Black
4 = Gray
5 = Beige
6 = White



BHR - STRAIGHT

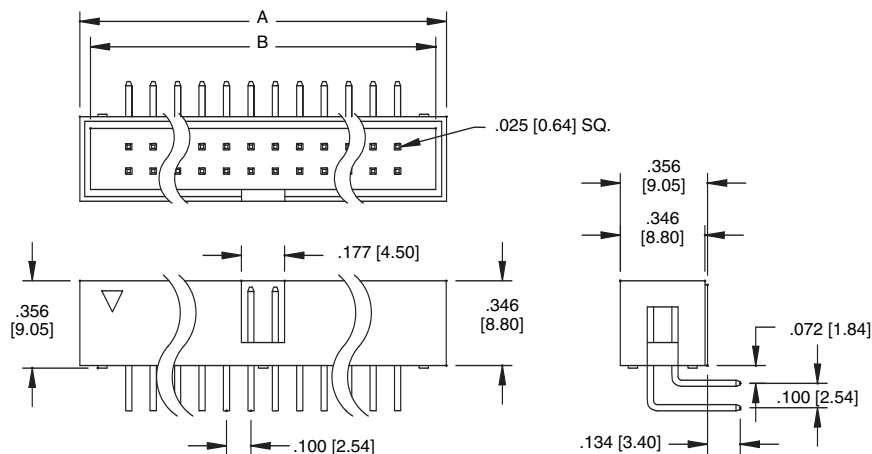


BHR-34-VUA

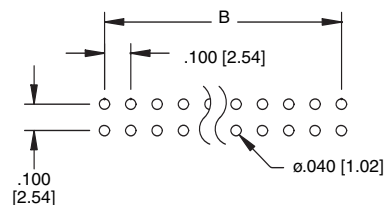


A = .100 [2.54] X No. of Positions / 2 + .300 [7.62]
B = .100 [2.54] X No. of Positions / 2 + .212 [5.40]

BHR - RIGHT ANGLE

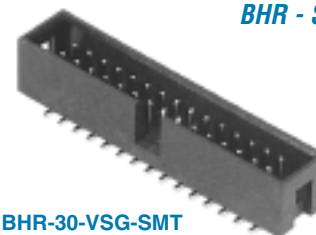
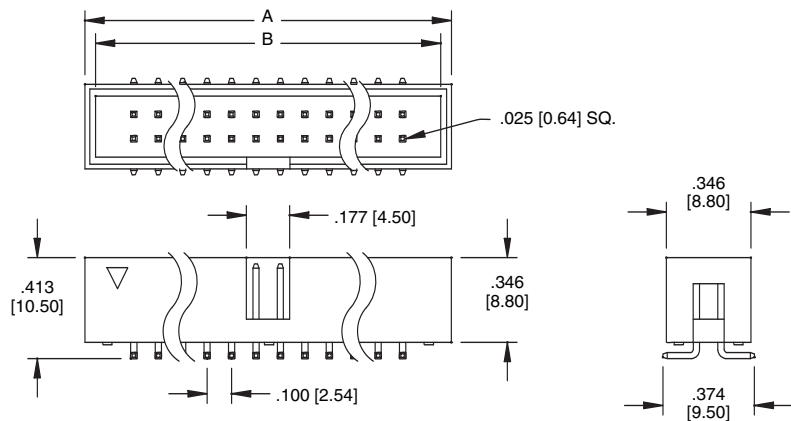


BHR-34-HUA

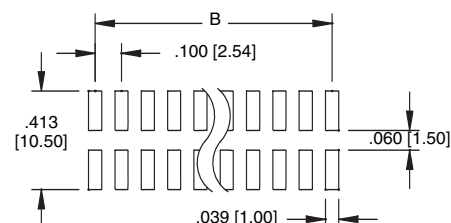


A = .100 [2.54] X No. of Positions / 2 + .300 [7.62]
B = .100 [2.54] X No. of Positions / 2 + .212 [5.40]

BHR - SMT



BHR-30-VSG-SMT



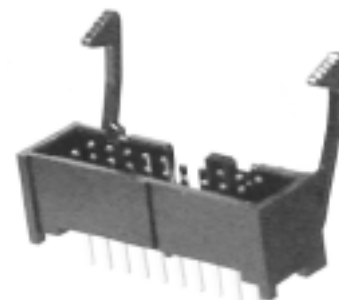
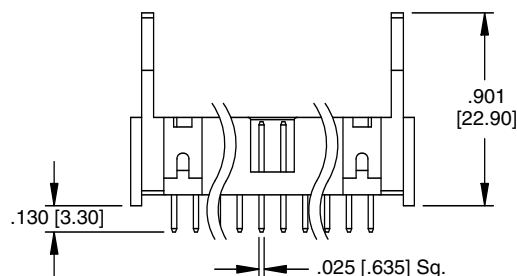
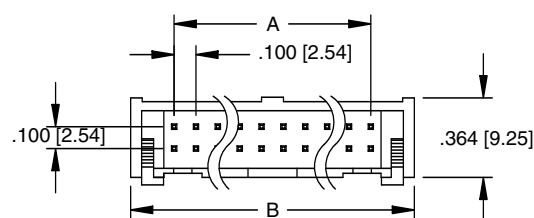
A = .100 [2.54] X No. of Positions / 2 + .300 [7.62]
B = .100 [2.54] X No. of Positions / 2 + .212 [5.40]

ADAM TECH .100" BOX HEADER W/LATCHES

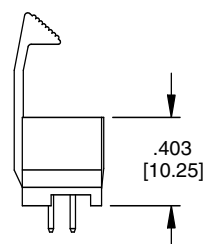
ADAM TECHNOLOGIES

.100" X .100" [2.54 X 2.54] CENTERLINE
MSH SERIES

BHR - STRAIGHT WITH -M METAL LATCH OPTION

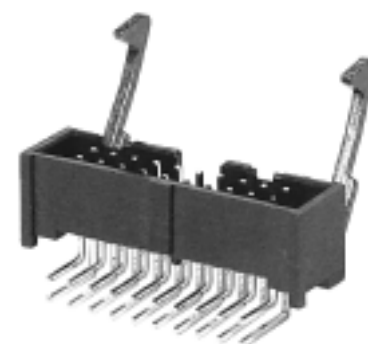
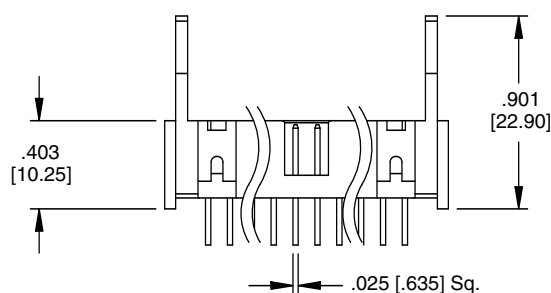
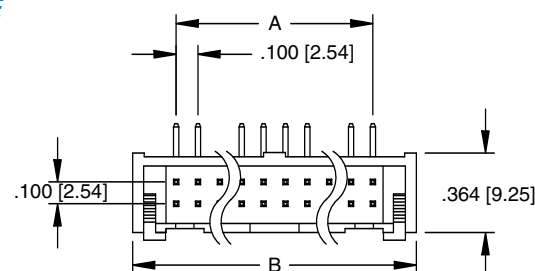


BHR-34-VUA-M

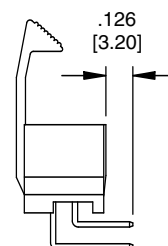


A = .100 [2.54] X No. of Positions /2 + .300 [7.62]
B = .100 [2.54] X No. of Positions /2 + .212 [5.40]

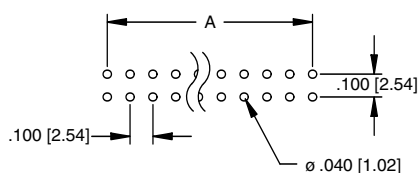
BHR - RIGHT ANGLE WITH -M METAL LATCH OPTION



BHR-34-HUA-M



Recommended PCB Layout



A = .100 [2.54] X No. of Positions /2 + .300 [7.62]
B = .100 [2.54] X No. of Positions /2 + .212 [5.40]