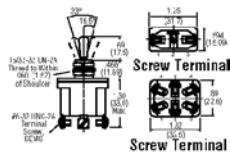


Environmentally Sealed, Mil-Spec. and Toggle Switches, and Switchguards



Econo Switch — Environmentally Sealed Toggle Switches

UL recognized/CSA certified. Designed for demanding industrial applications, switches are environmentally sealed to "spraytight" requirements for the MIL-STD-108E. Meets or exceeds commercial hose-down tests. Nickel plated brass toggle resists corrosion. **Contact Ratings (Maintained):** @ 115 VAC — 15 A (resistive), 10 A (inductive), 3 A (lamp load); @ 28 VDC — 20 A (resistive), 15 A (inductive), 5 A (lamp load). **Temperature Range:** -50°F to +150°F.

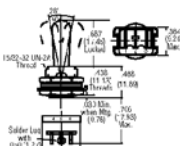


Screw Terminals

Stock No.	Mfr.'s Type	Circuit	Action (Momentary)	EACH		
				1-24	25-49	50-99
757-4000	8530K1	SPDT	On-Off-On	12.98	10.38	9.71
757-4002	8530K5	SPDT	On-None-(On)	12.98	10.38	9.56
757-4003	8530K4	SPDT	On-None-On	12.98	10.38	9.56
757-4004	8530K9	SPST	On-None-Off	12.98	10.38	9.56
757-4005	8530K11	SPST	Off-None-(On)	12.98	10.38	9.71
757-4006	8531K1	DPDT	On-Off-On	18.25	14.59	13.64
757-4007	8531K2	DPDT	(On)-Off-(On)	18.25	14.59	13.44
757-4008	8531K4	DPDT	On-None-On	18.25	14.59	13.64
757-4009	8531K9	DPST	On-None-Off	18.25	14.59	13.44
757-4010	8531K11	DPST	Off-None-(On)	18.25	14.59	13.18
757-4011	8532K1	4PDT	On-Off-On	29.60	23.69	21.83
757-4012	8532K2	4PDT	(On)-Off-(On)	29.60	23.69	21.83
757-4013	8532K4	4PDT	On-None-On	29.60	23.69	22.15
757-4014	8532K9	4PST	On-None-Off	29.60	23.69	21.83
757-4055	8530K2	SPDT	(On)-Off-(On)	12.96	10.38	9.71
757-4056	8530K3	SPDT	On-Off-(On)	12.96	10.38	9.71
757-4057	8530K10	SPST	On-None-(Off)	12.96	10.38	9.71
757-4058	8536K2E	SPDT	(On)-Off-(On)	12.96	10.38	9.71
757-4059	8536K4D	SPST	On-None-On	12.96	10.38	9.71
757-4060	8536K9F	SPST	On-None-Off	12.96	10.38	9.71
757-4061	8531K3	DPDT	On-Off-(On)	18.25	14.59	13.64
757-4062	8531K5	DPST	On-None-(On)	18.25	14.59	13.64
757-4063	8531K10	DPST	On-None-(Off)	18.25	14.59	13.64
757-4064	8537K2E	DPDT	(On)-Off-(On)	18.25	14.59	13.64
757-4065	8537K4D	DPST	On-None-On	18.25	14.59	13.64
757-4066	8537K9F	DPST	On-None-Off	18.25	14.59	13.64

0.25" Spade Terminals

757-4015	8530K31	SPDT	On-Off-On	12.98	10.38	9.56
757-4016	8530K32	SPDT	(On)-Off-(On)	12.98	10.38	9.71
757-4017	8530K34	SPDT	On-None-On	12.98	10.38	9.71
757-4018	8530K39	SPST	On-None-Off	12.98	10.38	9.56
757-4019	8530K311	DPDT	On-None-(On)	12.98	10.38	9.56
757-4020	8531K31	DPDT	On-Off-On	18.25	14.59	13.44
757-4025	8531K32	DPDT	(On)-Off-(On)	18.25	14.59	13.44
757-4026	8531K34	DPDT	On-None-On	18.53	14.81	13.64
757-4027	8531K39	DPST	On-None-Off	18.25	14.59	13.44
757-4028	8531K311	DPST	Off-None-(On)	18.25	14.59	13.44
757-4029	8532K31	4PDT	On-Off-On	29.60	23.69	21.83
757-4030	8532K32	4PDT	(On)-Off-(On)	29.60	23.69	21.83
757-4031	8532K34	4PDT	On-None-On	29.60	23.69	21.83
757-4032	8532K39	4PDT	(On)-None-(On)	29.60	23.69	21.41
757-4067	8530K33	SPDT	On-Off-(On)	12.96	10.38	9.71
757-4068	8530K35	SPST	On-None-(On)	12.96	10.38	9.71
757-4069	8530K310	SPST	On-None-(Off)	12.96	10.38	9.71
757-4071	8536K32E	SPDT	(On)-Off-(On)	12.96	10.38	9.71
757-4072	8536K34D	SPST	On-None-On	12.96	10.38	9.71
757-4073	8536K39F	SPST	On-None-Off	12.96	10.38	9.71
757-4074	8531K33	DPDT	On-Off-(On)	18.25	14.59	13.44
757-4075	8531K35	DPST	On-None-(On)	18.25	14.59	13.44
757-4076	8531K310	DPST	On-None-(Off)	18.25	14.59	13.44
757-4077	8537K32E	DPDT	(On)-Off-(On)	18.25	14.59	13.44
757-4078	8537K34D	DPST	On-None-On	18.25	14.59	13.44
757-4079	8537K39F	DPST	On-None-Off	18.25	14.59	13.44



MIL-S-8834 Miniature Positive Action Toggle Switches

Performance in accordance of MIL-S-8834, these switches offer high electrical/mechanical reliability. Non-teasable mechanism ensures the contact transfer without hang-up. Wiping action contacts are ideal for highly reliable, dry circuit applications. Part numbers below have solder lug terminations. PC pin terminations and locking toggle configurations also available. **Contact Ratings:** Max. — 5 A @ 28 VDC, 2 A @ 115 VAC; Min. — 25 microamps @ 5 mV or less.

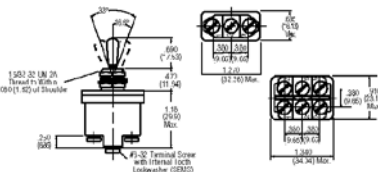
Stock No.	Mfr.'s Type	Circuit	Action (Momentary)	EACH		
				1-24	25-49	50-99
757-4033	8868K2	SPDT	(On)-Off-(On)	48.59	43.51	38.87
757-4034	8868K3	SPDT	On-Off-(On)	48.59	43.51	38.87
757-4035	8868K4	SPDT	On-None-On	46.44	40.08	35.81
757-4036	8869K1	DPDT	On-Off-On	56.29	50.41	45.03
757-4037	8869K2	DPDT	(On)-Off-(On)	61.81	55.35	49.44
757-4038	8869K3	DPDT	On-Off-(On)	59.42	53.21	47.53

Toggle Switchguards

Model 8492K1. Insertion of pin through guard prevents accidental operation and transfer of full throw single throw switches. Permits operation from first position to center on three-position switches.
757-4039. 8492K1. 1-24 EACH 7.11
25-49 EACH 6.46
50-99 EACH 4.85
Model 8497K1. For full throw single throw switches. Returns lever to off position.
757-4040. 8497K1. 1-24 EACH 11.09
25-49 EACH 10.08
50-99 EACH 7.56

MIL-S-3950 Environmentally Sealed Toggle Switches

Fully qualified to MIL-S-3950, this switch is ideal for demanding applications where switch failure cannot be tolerated. Silver plated contacts in the sealed body easily carry both high current/high voltage and low current/low voltage. Positive feel and reliable return action. Nickel plated toggle lever resists corrosion. **Contact Ratings (Maintained):** @ 28 VDC — 20 A (resistive), 15 A (inductive), 5 A (lamp load); @ 115 VAC — 15 A (resistive), 10 A (inductive), 3 A (lamp load). Min. 35-40 mA @ 6 VDC. **Temperature Range:** -80°F to +160°F.



Single Pole

Stock No.	Mfr.'s Type	Government MS No.	Action (Momentary)	EACH		
				1-24	25-49	50-99
757-4043	8500K9	MS-24523-22	On-None-Off	16.91	13.52	12.66
757-4044	8500K1	MS-24523-21	On-Off-On	16.91	13.52	12.66
757-4045	8500K2	MS-24523-27	(On)-Off-(On)	16.91	13.52	12.66
757-4046	8500K4	MS-24523-23	On-None-On	16.91	13.52	12.47
757-4080	8500K10	MS-24523-29	On-None-(Off)	16.91	13.52	12.66
757-4081	8500K11	MS-24523-30	Off-None-(On)	16.91	13.52	12.66
757-4082	8500K3	MS-24523-31	On-Off-(On)	16.91	13.52	12.66
757-4083	8500K5	MS-24523-26	On-None-(On)	16.91	13.52	12.66
757-4084	8503K10	MS-24658-22D	On-None-Off	28.75	22.99	21.53
757-4085	8503K2	MS-24658-21E	On-Off-On	28.75	22.99	21.53
757-4086	8503K6	MS-24658-23D	On-None-On	28.75	22.99	21.53

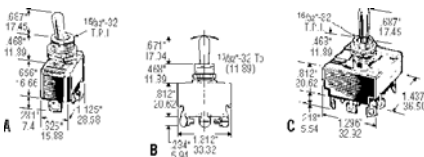
Double Pole

757-4047	8501K9	MS-24524-22	On-None-Off	22.68	18.14	16.95
757-4048	8501K2	MS-24524-27	(On)-Off-(On)	22.68	18.14	16.70
757-4049	8501K1	MS-24524-21	On-Off-On	22.68	18.14	16.95
757-4050	8501K4	MS-24524-23	On-None-On	22.68	18.46	16.70
757-4087	8501K10	MS-24524-29	On-None-(Off)	22.68	18.14	16.95
757-4088	8501K11	MS-24524-30	Off-None-(On)	22.68	18.46	16.70
757-4089	8501K17	MS-27407-4	On-On-On	22.68	18.14	16.70
757-4090	8501K18	MS-27407-5	(On)-On-On	22.68	18.14	16.70
757-4091	8501K19	MS-27407-6	(On)-On-(On)	22.68	18.14	16.70
757-4092	8501K3	MS-24524-31	On-Off-On	22.68	18.14	16.95
757-4093	8501K5	MS-24524-26	On-None-(On)	22.68	18.46	16.70
757-4094	8504K65	MS-27408-4A	On-On-On	35.11	28.08	25.86
757-4095	8504K6	MS-24659-23D	On-None-On	35.11	28.58	25.86

Four Pole

757-4051	8502K1	MS-24525-21	On-Off-On	39.00	31.19	28.17
757-4052	8502K4	MS-24525-23	On-None-On	36.45	29.15	27.27
757-4053	8502K9	MS-24525-22	On-None-Off	36.45	29.15	26.86
757-4054	8502K2	MS-24525-27	(On)-Off-(On)	36.45	29.15	27.27
757-4096	8502K3	MS-24525-31	On-Off-(On)	36.45	29.15	26.33
757-4097	8502K5	MS-24525-26	On-None-(On)	36.46	29.15	27.27
757-4098	8505K6	MS-24660-23D	On-None-On	48.83	39.05	36.53

Bat Lever Switches



General Purpose AC Only Bat Lever Switches

Designed to provide high interrupting capacity in a small phenolic base. Contacts are silver plated. 3/4 hp, 15/32" slotted sleeve length. UL recognized.

Stock No.	Mfr.'s Type	Fig.	Circuit	Action (Momentary)	Terminals	Amps		EACH		
						125 VAC	250 V	1-24	25-49	50-99
757-5030	7802K31	A	SPST	On-None-Off	Screw	20	10	4.94	4.09	3.68
757-5031	7802K11	A	SPST	On-None-Off	Solder Lug	20	10	3.70	3.16	2.77
757-5032	7802K21	A	SPST	On-None-Off	.250 Quick Conn.	20	10	3.70	3.09	2.77
757-5033	7802K32	A	SPDT	On-Off-On	Screw	20	10	5.12	4.37	3.83
757-5034	7802K33	A	SPDT	On-None-On	Screw	20	10	4.95	4.23	3.70
757-5035	7802K37	A	SPDT	(On)-Off-(On)	Screw	20	10	8.81	7.70	6.72
757-5036	7803K31	B	DPST	On-None-Off	Screw	20	10	6.58	5.64	4.92
757-5037	7803K11	B	DPST	On-None-Off	Solder Lug	20	10	5.56	4.76	4.16
757-5038	7803K32	B	DPDT	On-Off-On	Screw	20	10	7.64	6.36	5.72
757-5039	7803K12	B	DPDT	On-Off-On	Solder Lug	20	10	6.58	5.64	4.92
757-5040	7803K33	B	DPDT	On-None-On	Screw	20	10	7.95	6.94	6.06
757-5041	7803K13	B	DPDT	On-None-On	Solder Lug	20	10	6.58	5.64	4.92
757-5042	7803K37	B	DPDT	(On)-Off-(On)	Screw	20	10	12.67	10.75	9.66
757-5043	7804K32	C	3PDT	On-Off-On	Screw	20	10	16.69	14.72	12.85
757-5044	7805K33	C	4PDT	On-None-On	Screw	20	10	20.84	18.36	16.04

Model 8494K2. For three-position switches. Returns lever to center position from either extreme. Guard housing remains fixed in open and closed position.
757-4041. 8494K2. 1-24 EACH 31.67
25-49 EACH 27.89
50-99 EACH 24.92
Model 8498K6. For two- or three-position switches. Closing guard does not affect toggle position.
757-4042. 8498K6. 1-24 EACH 49.40
25-49 EACH 44.24
50-99 EACH 39.52



For Fast, Dependable Service, Make Just One Call — 1-800-433-5700

ALLIED ► 215