

# DIGITAST

## Microminiature SPDT, Key Switches



### Features/Benefits

- High reliability/long life
- Designed for low level switching
- Ready to implement on PCB
- Latching function available
- Several button options
- RoHS compliant and compatible

### Typical Applications

- Medical
- Instrumentation
- Industrial electronics
- Audio electronics

### Construction

FUNCTION: momentary or push-push  
CONTACT ARRANGEMENT: 1 change over contact SPDT, NO  
MODE OF SWITCHING: Non-shorting  
DISTANCE BETWEEN BUTTON CENTERS:  
HORIZONTAL MINIMUM: 12,7 (0.500) or 17,78 (0.700)  
VERTICAL MINIMUM: 17,78 (0.700)  
TERMINALS: PC pins  
MOUNTING: Soldering, centering pins

### Mechanical

TOTAL TRAVEL:  $\leq 3$  (.0018)  
SWITCHING TRAVEL: 1,5 (0.0591)  
LATCHING TRAVEL: 1,8 (0.0709)  
OPERATING FORCE: 1.5 +/- 0.5 N (150 +/- 50 grams)

### Process

SOLDERABILITY: Max. soldering time and temperature: 5 s at 260°C

### Electrical

SWITCHING POWER MAX.: 240 mW DC  
SWITCHING VOLTAGE MAX.: 24 V DC  
SWITCHING CURRENT MAX.: 10 mA DC  
CARRYING CURRENT AT 20°C (push-push version): 100 mA  
DIELECTRIC STRENGTH (50 Hz, 1 min): 500 V  
OPERATING LIFE with or without max. switching power  
Momentary:  $\geq 5 \times 10^6$  operations  
Push-push:  $\geq 5 \times 10^5$  operations  
CONTACT RESISTANCE: Initial  $\leq 50$  m $\Omega$   
After  $5 \times 10^6$  operations:  $\leq 100$  m $\Omega$   
INSULATION RESISTANCE:  $\geq 10^{10}$   $\Omega$   
CAPACITANCE at f= 10 kHz:  $\leq 0.8$  pF  
BOUNCE TIME:  $\leq 2.5$  ms  
Operating speed 400 mm/s (15.75/s)

### Environmental

OPERATING TEMPERATURE: -25°C to 85°C.

### How To Order

Our easy build-a-switch concept allows you to mix and match options to create the switch you need. To order, select desired option from each category and place it in the appropriate box.

#### Switch

<div>Series</div> <div>SER Narrow button</div> <div>SET Wide button</div> <div>SERU Switch body only (no button)</div>	<div>LED</div> <div>NONE No LED</div> <div>L 1 LED</div> <div>2L 2 LED's</div>	<div>Button Color**</div> <div>None (SERU)</div> <div>BK Black</div> <div>GY Gray</div>	<div>1st LED Color</div> <div>NONE No LED</div> <div>RD Red</div> <div>YE Yellow</div> <div>GN Green</div>	<div>LED Spacing*</div> <div>NONE Narrow LED Spacing (TYP Europe)</div> <div>7.62 Wide LED Spacing (TYP No. America)</div>	<div>2nd LED Color</div> <div>NONE No LED</div> <div>RD Red</div> <div>YE Yellow</div> <div>GN Green</div>	<div>Contact Material</div> <div>AU Gold</div>	<div>Function</div> <div>EE Latching</div> <div>OA Non-latching</div>	<div>Body Color</div> <div>NONE White (STD)</div> <div>BRN Brown</div>
--	--	---	--	--	--	--	---	--

\* LED spacing only applies when 1 LED requested

#### Button

<div>Button Style</div> <div>SR Narrow</div> <div>ST Wide</div>	<div>LED Holes</div> <div>NONE No LED holes</div> <div>L 1 LED hole</div> <div>2L 2 LED holes</div>	<div>Button Color**</div> <div>BK Black</div> <div>GY Gray</div>	<div>Latching</div> <div>None For use with momentary switch</div> <div>EE With "EE" staple for latching</div>
---	---	--	---

\*\* Additional button colors available by request



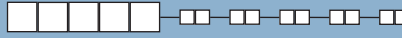
Dimensions are shown: mm (inch)  
Specifications and dimensions subject to change

www.ck-components.com

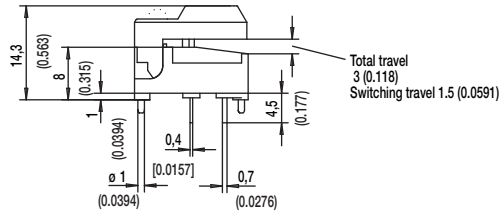
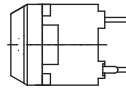
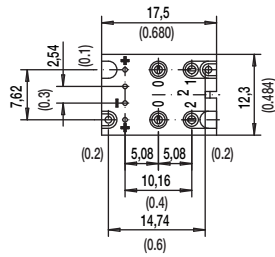
# DIGITAST

## Microminiature SPDT, Key Switches

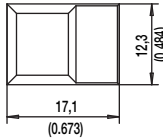
### DESIGNATION



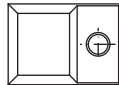
#### SER NARROW BUTTON



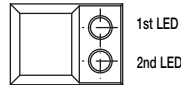
SER



SERL

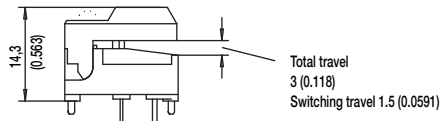
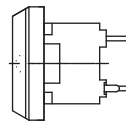
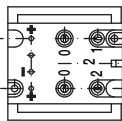


SER2L

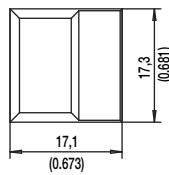


1st LED  
2nd LED

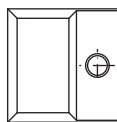
#### SET WIDE BUTTON



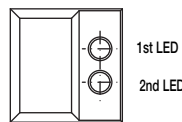
SET



SETL

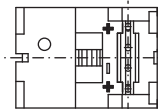
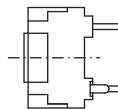
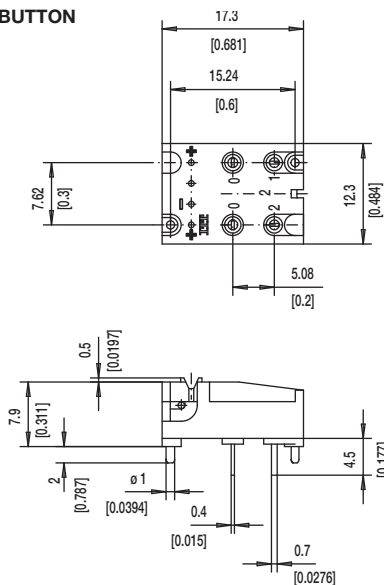


SET2L



1st LED  
2nd LED

#### SERU NO BUTTON



First Angle  
Projection

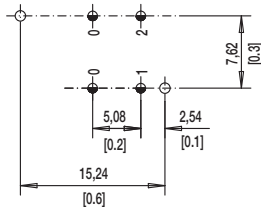
Dimensions are shown: mm (inch)  
Specifications and dimensions subject to change

# DIGITAST

## Microminiature SPDT, Key Switches

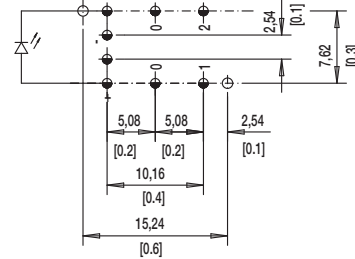
### LED

#### NONE NO LED

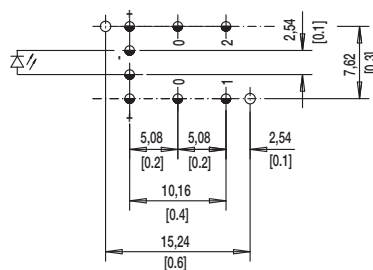


#### L 1 LEDs

7.62 mm Spacing (TYP No. America)

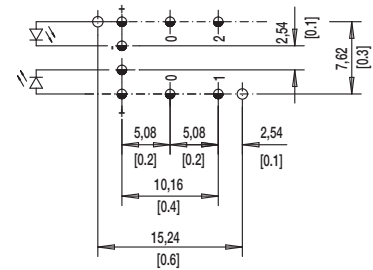


NARROW SPACING (TYP EUROPE)



TOP VIEW OF PCB

#### 2L 2 LEDs



⌀ 1.0±0.1 (0.0394±0.00349)

⌀ 1.1±0.05 (0.0433±0.00197)

### BUTTON COLOR

**BK** BLACK

**GY** GRAY

Other button colors available by request [red (RD), green (GN), white (WH), yellow (YE), blue (BU), orange (OG)].

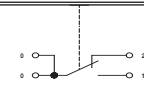
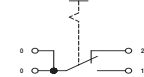
### LED COLOR

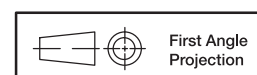
OPTION CODE	COLOR
<b>NONE</b>	Models without LED
<b>RD</b>	Red
<b>GN</b>	Green
<b>YE</b>	Yellow

### CONTACT MATERIAL

OPTION CODE	MATERIAL
<b>AU</b>	Gold

### FUNCTION

OPTION CODE	COLOR	SCHEMATIC
<b>OA</b>	Momentary	
<b>EE</b>	Push-Push	



First Angle Projection

Dimensions are shown: mm (inch)  
Specifications and dimensions subject to change

[www.ck-components.com](http://www.ck-components.com)

**C&K**