



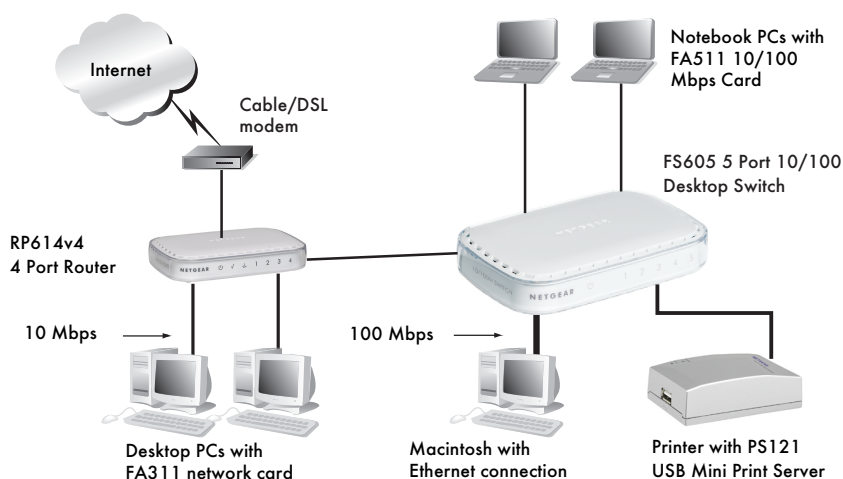
FS600 Series

5 Port and 8 Port 10/100 Desktop Switches

- *Help is there when you need it! NETGEAR provides 24x7 technical support* in English, with selected local language support during office hours.*

The FS600 Series delivers maximum performance to your home network
Hang on – your network will soar when it's hooked up to a NETGEAR FS600 series switch! These powerful plug-and-play switches connects at 10 or 100 Mbps and makes it easy to link as many as eight computers or peripherals to your Ethernet network. You'll experience maximum performance for 10 or 100 Mbps devices with ports that automatically sense the correct speed while Auto Uplink™ adjusts for the different types of Ethernet cables. The FS600 series' sleek case has lights on the front for easy monitoring and an optional vertical stand to save desktop space. Installation into your home network couldn't be simpler and, once powered on, it begins cool and silent operation – without an internal fan.

- Versatile** ● Connects up to eight computers, servers, printers, switches or any other Ethernet devices at 10 or 100 Mbps over Ethernet cables. Works with virtually any operating system (Microsoft® Windows®, Apple® Macintosh®, Linux® and more).
- User-Friendly** ● Designed specifically for home and small office users with plug and play installation, rear ports that reduce cable clutter, and front status lights for easy monitoring. Plug it in, set up your Ethernet devices, and you will forget that it is even there.
- Resourceful** ● All ports deliver fast 100 Mbps speed, plus Auto Uplink™ makes sure that the signal adjusts for each type of Ethernet cable that is connected.
- Well-Designed** ● Sleek, attractive design blends seamlessly into your home decor whether it is placed flat or in the vertical stand.



Technical Specifications

- **Network Protocol and Standards Capability:**
 - IEEE 802.3i 10BASE-T
 - IEEE 802.3u 100BASE-TX
 - IEEE 802.3x Flow Control
 - Compatible with Microsoft® Windows®, Mac® OS, NetWare®, Linux®
- **Interface:**
 - RJ-45 connector for 10BASE-T and 100BASE-TX
 - All ports have Auto Uplink™ (Auto MDI-X)
- **Power Consumption:**
 - 7.5 W maximum
- **Physical Specifications:**
 - **Dimensions:**
 - FS605: 147 x 96.7 x 28.5 mm (5.79 x 3.81 x 1.12 in)
 - FS608: 171 x 113.2 x 28.5 mm (6.73 x 4.46 x 1.12 in)
 - **Weight:**
 - FS605: 0.424 lbs (0.192kg)
 - FS608: 0.614 lbs (0.278kg)
- **Status Lights:**
 - Power light; link and activity light on each port
- **Environmental Specifications:**
 - **Operating Temperature:** 0 to 50°C (32 to 104°F)
 - **Operating Relative Humidity:** 10-90% noncondensing
- **Performance Specifications:**
 - **Frame filter and forward rates:**
 - 14,800 frames/sec max for 10M port
 - 148,800 frames/sec max for 100M port
 - Non-blocking, wire-speed frame forward rate
 - **Forwarding modes:** Store-and-forward
 - **Network latency:** <20µs for 64-byte frames for 100 Mbps to 100 Mbps transmission
 - **Address database size:** 1,024 media access control (MAC) addresses
 - **Addressing:** 48-bit MAC address
 - **Queue buffer:** 64 kilobytes
 - **Maximum cable length:** 100 m (328 ft.)

- **Electromagnetic Emissions:**
 - CE mark, commercial
 - FCC Part 15, Class B
 - VCCI, Class B
 - EN 55 022 (CISPR 22), Class B
 - C-Tick
 - EN 55 024

- **Warranty:**
 - NETGEAR 3-year warranty

System Requirements

- Category 5 UTP Ethernet cables
- Network card for each computer
- Network software such as Windows, Macintosh, or Linux

Package Contents

- 5/8-port Fast Ethernet Switch FS605 v3/FS608 v3
- AC power adapter
- Vertical stand
- Installation guide
- Warranty/support information card

NETGEAR Related Products

- FA311 10/100 Mbps PCI Ethernet Network Card
- FA511 10/100 Mbps CardBus Notebook PC Card
- FA120 10/100 Mbps USB 2.0 Fast Ethernet Adapter
- RP614 4-port 10/100 Mbps Router
- XE102 Wall-plugged Ethernet Bridge (U.S. only)
- XE104 Wall-plugged Ethernet Bridge
- PS121 USB Mini Print Server
- WPN824 RangeMax™ Wireless router

NETGEAR®

4500 Great America Parkway
Santa Clara, CA 95054 USA
Phone: 1-888-NETGEAR
E-mail: info@NETGEAR.com
www.NETGEAR.com

©2006 NETGEAR, Inc. NETGEAR, the NETGEAR logo, Connect with Innovation, Everybody's connecting, the Gear Guy logo, IntelliFi, ProSafe, RangeMax and Smart Wizard are trademarks or registered trademarks of NETGEAR, Inc. in the United States and/or other countries. Microsoft and Windows are trademarks or registered trademarks of Microsoft Corporation in the United States and/or other countries. Other brand and product names are trademarks or registered trademarks of their respective holders. Information is subject to change without notice. All rights reserved.

* Free basic installation support provided for 90 days from date of purchase. Advanced product features and configurations are not included in free basic installation support; optional premium support available.

D-FS600 Series-1

