

1

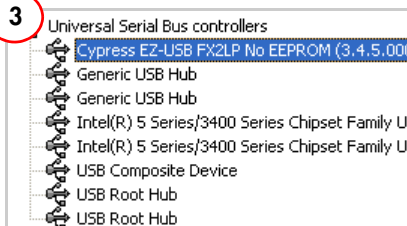


Install Software

Insert the kit CD/DVD in the CD/DVD drive of your PC.

For first time users, it is recommended to accept the default option at each stage of the setup. Follow the prompts to install the "kit software".

3



Confirm Installation

Open the Device Manager by right-clicking on **My Computer > Manage > Device Manager**.
Note: In Windows 7, right-click on **Computer > Manage > Device Manager**.

The CY3684 EZ-USB FX2LP DVK enumerates as 'Cypress EZ-USB FX2LP No EEPROM (3.4.5.000)' with VID=04B4 and PID=8613 in Device Manager, as shown above.

The CY3674 EZ-USB FX1 DVK enumerates as 'Cypress EZ-USB FX1 No EEPROM (3.4.5.000)' with VID=04B4 and PID=6473.

2

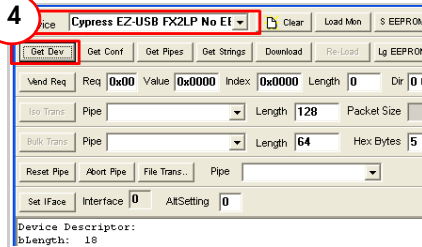


Install USB Driver

Set the SW2 in 'NO EEPROM' mode. Connect a USB A-to-B cable between the development board J1 connector and USB Host port on a Windows PC. Windows Hardware wizard window pops up at this moment.

Follow the steps (5-10) outlined in section 6.2.1 of Kit User Guide. Point the Windows Hardware Wizard to the directory of the relevant USB driver for Windows OS platform to which the EZ-USB development board is connected.

4



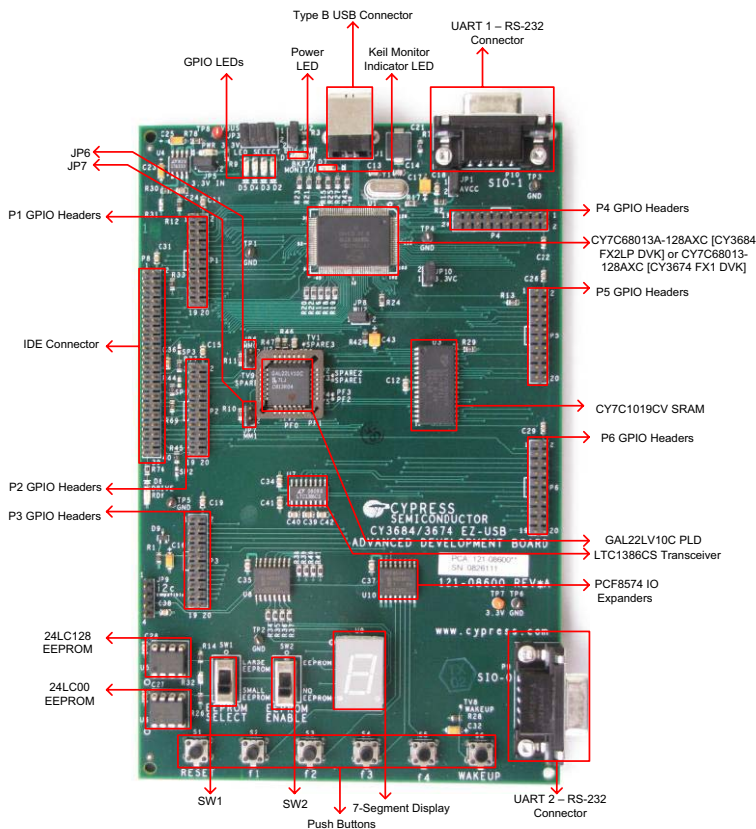
Run CyConsole EZ-USB

Run the Cypress USB Console application from **Start > All Programs > Cypress > Cypress Suite USB 3.4.7 > CyConsole**.

Click on the "Get Dev" button to retrieve the Device Descriptor.

The VID/PID and other details of the connected device are displayed.

EZ-USB FX1/FX2LP Development Board Details



For the latest information about these kits visit
www.cypress.com/go/CY3684
www.cypress.com/go/CY3674

© 2011-2012 Cypress Semiconductor Corporation. All rights reserved. All trademarks or registered trademarks referenced herein are the properties of their respective owners.



DOC#: 001-67113 REV. *B