



# SAW Mobile Communications

## **Series/Type: B7777**

The following products presented in this data sheet are being withdrawn.

Ordering Code	Substitute Product	Date of Withdrawal	Deadline Last Orders	Last Shipments
B39202B7777C810	B39202B9031E910	06.07.2007	31.01.2008	30.04.2008

For further information please contact your nearest EPCOS sales office, which will also support you in selecting a suitable substitute. The addresses of our worldwide sales network are presented at [www.epcos.com/sales](http://www.epcos.com/sales).

# SAW Components

B7777

## Low-Loss Filter for Mobile Communication

1950,0 MHz

### Data Sheet



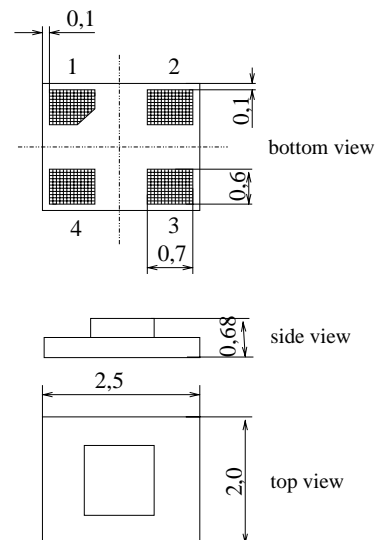
#### Features

- Low-loss RF filter for W-CDMA mobile telephone system, transmit path
- High stopband attenuation
- Usable passband 60 MHz
- Unbalanced/unbalanced operation
- Package size: 2 mm x 2.5 mm (4 pin, diagonal pinning)

#### Terminals

- Ni, gold-plated Data Sheet

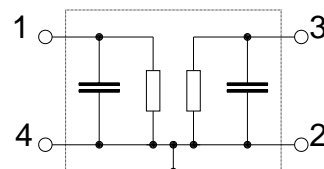
Chip sized SAW package



Dimensions in mm, approx weight 0,012g

#### Pin configuration

- |     |        |
|-----|--------|
| 1   | Input  |
| 3   | Output |
| 2,4 | Ground |



Type	Ordering code	Marking and Package according to	Packing according to
B7777	B39202-B7777-C810	C61157-A7-A118	F61074-V8153-Z000

Electrostatic Sensitive Device (ESD)

#### Maximum ratings

Operable temperature range	$T$	- 20 / + 85	°C	source impedance 50 $\Omega$
Storage temperature range	$T_{stg}$	- 40 / + 85	°C	
DC voltage	$V_{DC}$	3	V	
Source power	$P_s$	10	dBm	

**SAW Components**
**B7777**
**Low-Loss Filter for Mobile Communication**
**1950,0 MHz**
**Data Sheet**

**Characteristics**

Operating temperature range:  $T = +25\text{ °C} \pm 2\text{ °C}$ 

Terminating source impedance:  $Z_S = 50\ \Omega$ 

Terminating load impedance:  $Z_L = 50\ \Omega$ 

		min.	typ.	max.	
<b>Center frequency</b>	$f_C$	—	1950,0	—	MHz
<b>Maximum insertion attenuation</b>	$\alpha_{\max}$				
	1920,0 ... 1980,0 MHz	—	2,2	2,5	dB
<b>Ripple</b>	p-p				
	1920,0 ... 1980,0 MHz	—	1,0	1,2	dB
<b>Input VSWR</b>					
	1920,0 ... 1980,0 MHz	—	1,9	2,1	
<b>Output VSWR</b>					
	1920,0 ... 1980,0 MHz	—	1,9	2,1	
<b>Attenuation</b>	$\alpha$				
	0,0 ... 1670,0 MHz	26	28	—	dB
	1670,0 ... 1720,0 MHz	29	31	—	dB
	1720,0 ... 1750,0 MHz	30	32	—	dB
	1750,0 ... 1880,0 MHz	31	33	—	dB
	2025,0 ... 2050,0 MHz	35	45	—	dB
	2110,0 ... 2170,0 MHz	34	36	—	dB
	2300,0 ... 2490,0 MHz	34	36	—	dB
	2490,0 ... 2740,0 MHz	35	38	—	dB
	2740,0 ... 3960,0 MHz	30	33	—	dB
	3960,0 ... 6000,0 MHz	15	21	—	dB

**SAW Components**
**B7777**
**Low-Loss Filter for Mobile Communication**
**1950,0 MHz**
**Data Sheet**

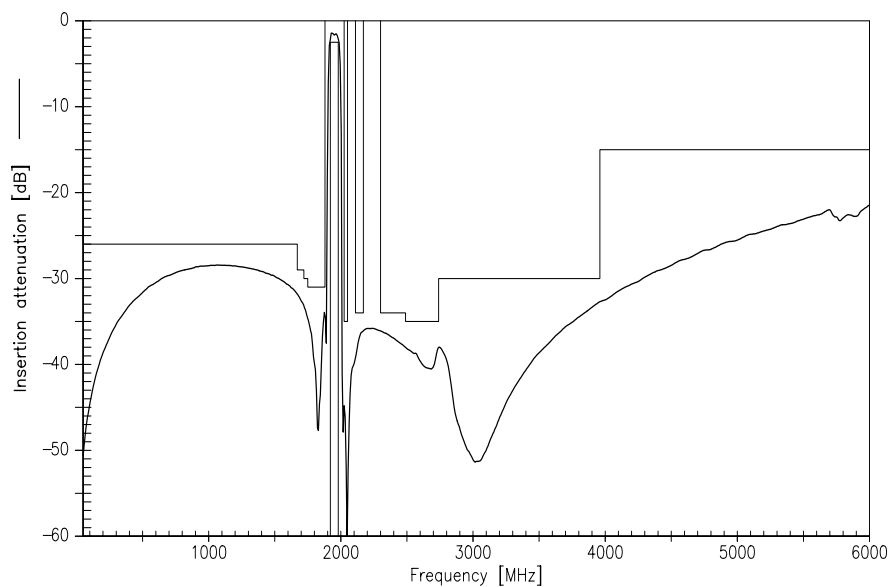
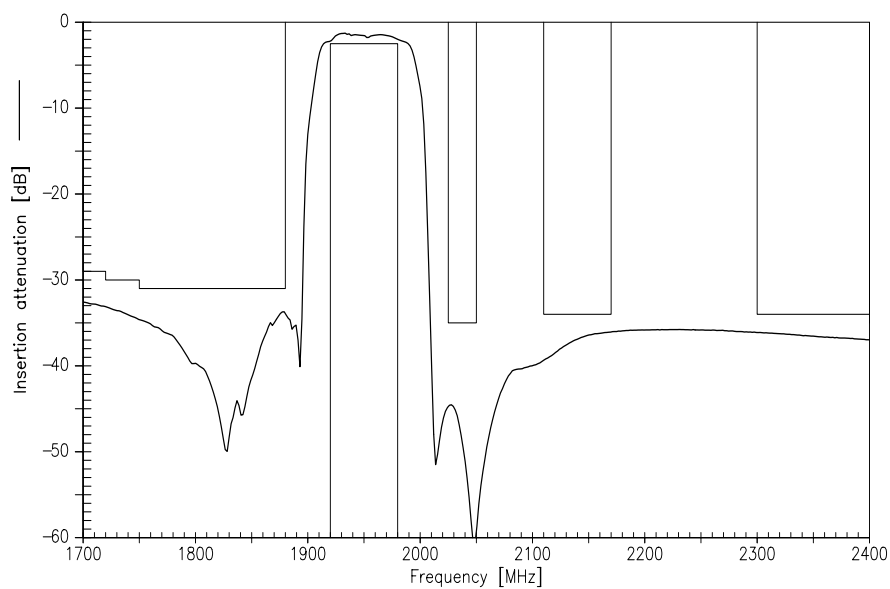
**Characteristics**

Operating temperature range:  $T = -20$  to  $+85$  °C

Terminating source impedance:  $Z_S = 50 \Omega$ 

Terminating load impedance:  $Z_L = 50 \Omega$ 

		min.	typ.	max.	
<b>Center frequency</b>	$f_C$	—	1950,0	—	MHz
<b>Maximum insertion attenuation</b>	$\alpha_{\max}$				
	1920,0 ... 1980,0 MHz	—	2,4	2,8	dB
<b>Ripple</b>	p-p				
	1920,0 ... 1980,0 MHz	—	1,0	1,6	dB
<b>Input VSWR</b>					
	1920,0 ... 1980,0 MHz	—	2,0	2,2	
<b>Output VSWR</b>					
	1920,0 ... 1980,0 MHz	—	2,0	2,2	
<b>Attenuation</b>	$\alpha$				
	0,0 ... 1670,0 MHz	26	28	—	dB
	1670,0 ... 1720,0 MHz	29	31	—	dB
	1720,0 ... 1750,0 MHz	30	32	—	dB
	1750,0 ... 1880,0 MHz	31	33	—	dB
	2025,0 ... 2050,0 MHz	35	45	—	dB
	2110,0 ... 2170,0 MHz	34	36	—	dB
	2300,0 ... 2490,0 MHz	34	36	—	dB
	2490,0 ... 2740,0 MHz	35	38	—	dB
	2740,0 ... 3960,0 MHz	30	33	—	dB
	3960,0 ... 6000,0 MHz	15	21	—	dB

**Transfer function (spec for 25°C ± 2 °C):**


**Published by EPCOS AG****Surface Acoustic Wave Components Division, SAW MC WT****P.O. Box 80 17 09, 81617 Munich, GERMANY**

© EPCOS AG 2004. Reproduction, publication and dissemination of this brochure and the information contained therein without EPCOS' prior express consent is prohibited.

Purchase orders are subject to the General Conditions for the Supply of Products and Services of the Electrical and Electronics Industry recommended by the ZVEI (German Electrical and Electronic Manufacturers' Association), unless otherwise agreed.

This brochure replaces the previous edition.

For questions on technology, prices and delivery please contact the Sales Offices of EPCOS AG or the international Representatives.

Due to technical requirements components may contain dangerous substances. For information on the type in question please also contact one of our Sales Offices.

# Mouser Electronics

Authorized Distributor

Click to View Pricing, Inventory, Delivery & Lifecycle Information:

[EPCOS:](#)

[B39202B7777C810](#)