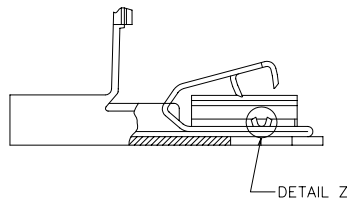
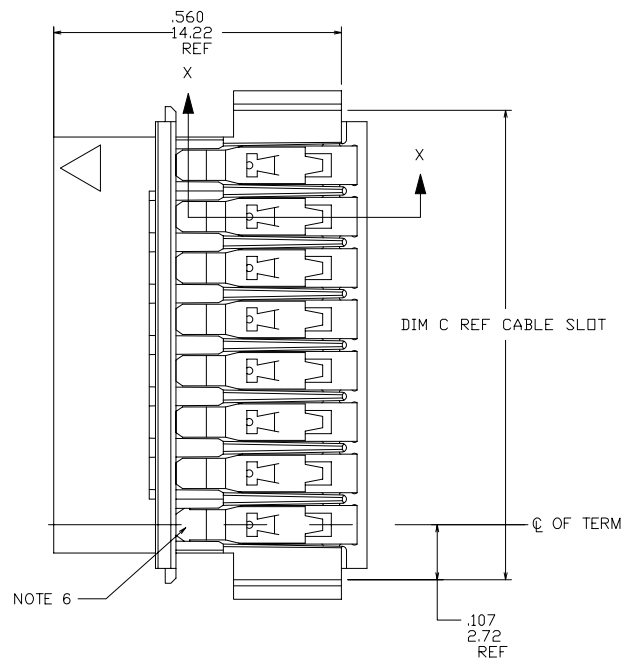
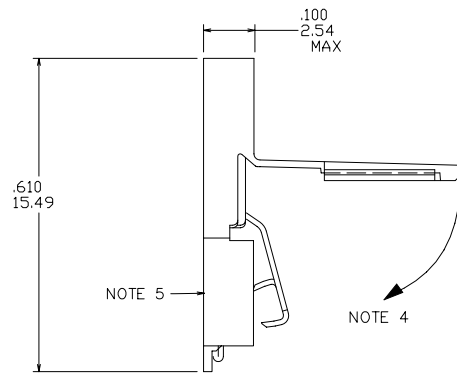
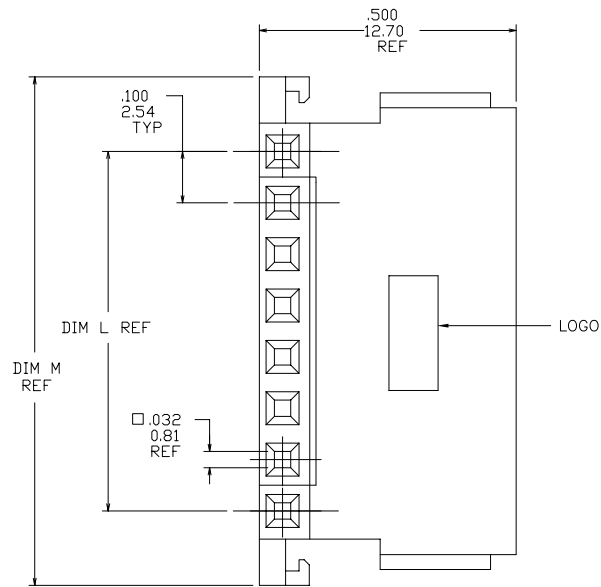




FCIconnect.com

Copyright FCI



DETAIL Z  
SCALE 6/1

mat'l. code				surface	ISO 1302	tolerance	ISO 406	projection	product family
							ISO 1101		CLINCHER
ltr	ecn	no	dr	date	tolerances unless otherwise specified				title
A	V03-0863	LP		8/5/03	angles	linear	.XX±.01/.3	INCH/MM	NARROW BODY CLINCHER™
B	M05-0087	MHT		6/14/05			.XXX±.005/.13		RECEPTACLE ASSEMBLY
C	M07-0170	MHT		3/30/07	0'±2'		.XXX±.0020/.051	scale 3:1	
					dr	L.POTTEIGER	8/5/03		dwg no
					enr	H. SUNDY	8/5/03		sheet 1 of 6 size
					chr	H. SUNDY	8/5/03		10032480 A3
					appd	H. SUNDY	8/5/03		type
									Product Customer Drawing
sheet	revision	C	C	C	C	C	C		
index	sheet	1	2	3	4	5	6		

form: A3

PDM: Rev:C

STATUS Released



Printed: Jul 22, 2010

PLATING CODE
--------------

PRODUCT NUMBER  
10032480-XXXLF

- LEAD FREE OPTION  
NOTE 7,8
- NO OF POSITIONS  
AND PLATING
- BASE PART NUMBER



- |             |     |                |    |      |  |                                       |             |                                  |   |   |          |  |              |  |      |  |  |
|-------------|-----|----------------|----|------|--|---------------------------------------|-------------|----------------------------------|---|---|----------|--|--------------|--|------|--|--|
| mat'l. code |     |                |    |      |  | surface<br>ISO 1302 ✓                 |             | tolerance<br>ISO 406<br>ISO 1101 |   | projection<br> |          | product family<br>CLINCHER                   |              |  |      |  |  |
| ltr         | ecn | no             | dr | date |  | tolerances unless otherwise specified |             |                                  |   |   |          | title  |              |  |      |  |  |
| C           |     |                |    |      |  | angles                                |             | linear                           | .XX±.01/.3  | INCH/MM   |          | NARROW BODY CLINCHER™<br>RECEPTACLE ASSEMBLY |              |  |      |  |  |
|             |     |                |    |      |  | 0°±2'                                 |             |                                  | .XXX±.005/.13   | scale 3:1   |          |  |              |  |      |  |  |
|             |     |                |    |      |  |                                       |             |                                  | .XXXX±.0020/.051  |   |          |  |              |  |      |  |  |
|             |     |                |    |      |  | dr                                    | L.POTTEIGER | 8/5/03                           |  |   | dwg no   |  | sheet 2 of 6 |  | size |  |  |
|             |     |                |    |      |  | engr                                  | H. SUNDY    | 8/5/03                           |   |   | 10032480 |  | A3           |  |      |  |  |
|             |     |                |    |      |  | chr                                   | H. SUNDY    | 8/5/03                           |   |   |          |  |              |  |      |  |  |
|             |     |                |    |      |  | appd                                  | H. SUNDY    | 8/5/03                           |   |   |          |  |              |  |      |  |  |
| sheet index |     | revision sheet |    |      |  |                                       |             |                                  |   |   |          |  |              |  |      |  |  |



FCIconnect.com

Copyright FCI

PRODUCT NO.	NO. OF	DIM. L	DIM. L	DIM. M	DIM. M	DIM. C	DIM. C	PLATING	TERMINATION	
NOTE 7	POSITIONS	ENGLISH	METRIC	ENGLISH	METRIC	ENGLISH	METRIC	CODE	NOTE 6	
10032480-006	6	0.500	12.70	0.790	20.07	0.715	18.16	1	CONVENTIONAL	
10032480-007	7	0.600	15.24	0.890	22.61	0.815	20.70	1	CONVENTIONAL	
10032480-008	8	0.700	17.78	0.990	25.15	0.915	23.24	1	CONVENTIONAL	
10032480-009	9	0.800	20.32	1.090	27.69	1.015	25.78	1	CONVENTIONAL	
10032480-010	10	0.900	22.86	1.190	30.23	1.115	28.32	1	CONVENTIONAL	
10032480-011	11	1.000	25.40	1.290	32.77	1.215	30.86	1	CONVENTIONAL	
10032480-012	12	1.100	27.94	1.390	35.31	1.315	33.40	1	CONVENTIONAL	
10032480-013	13	1.200	30.48	1.490	37.85	1.415	35.94	1	CONVENTIONAL	
10032480-014	14	1.300	33.02	1.590	40.39	1.515	38.48	1	CONVENTIONAL	
10032480-015	15	1.400	35.56	1.690	42.93	1.615	41.02	1	CONVENTIONAL	
10032480-016	16	1.500	38.10	1.790	45.47	1.715	43.56	1	CONVENTIONAL	
10032480-017	17	1.600	40.64	1.890	48.01	1.815	46.10	1	CONVENTIONAL	
10032480-018	18	1.700	43.18	1.990	50.55	1.915	48.64	1	CONVENTIONAL	
10032480-019	19	1.800	45.72	2.090	53.09	2.015	51.18	1	CONVENTIONAL	
10032480-020	20	1.900	48.26	2.190	55.63	2.115	53.72	1	CONVENTIONAL	
10032480-021	21	2.000	50.80	2.290	58.17	2.215	56.26	1	CONVENTIONAL	
10032480-022	22	2.100	53.34	2.390	60.71	2.315	58.80	1	CONVENTIONAL	
10032480-023	23	2.200	55.88	2.490	63.25	2.415	61.34	1	CONVENTIONAL	
10032480-024	24	2.300	58.42	2.590	65.79	2.515	63.88	1	CONVENTIONAL	
10032480-025	25	2.400	60.96	2.690	68.33	2.615	66.42	1	CONVENTIONAL	
10032480-026	26	2.500	63.50	2.790	70.87	2.715	68.96	1	CONVENTIONAL	
10032480-027	27	2.600	66.04	2.890	73.41	2.815	71.50	1	CONVENTIONAL	
10032480-028	28	2.700	68.58	2.990	75.95	2.915	74.04	1	CONVENTIONAL	
10032480-029	29	2.800	71.12	3.090	78.49	3.015	76.58	1	CONVENTIONAL	
10032480-030	30	2.900	73.66	3.190	81.03	3.115	79.12	1	CONVENTIONAL	
10032480-031	31	3.000	76.20	3.290	83.57	3.215	81.66	1	CONVENTIONAL	
10032480-032	32	3.100	78.74	3.390	86.11	3.315	84.20	1	CONVENTIONAL	
10032480-033	33	3.200	81.28	3.490	88.65	3.415	86.74	1	CONVENTIONAL	
10032480-034	34	3.300	83.82	3.590	91.19	3.515	89.28	1	CONVENTIONAL	

mat'l. code				surface ISO 1302 <input checked="" type="checkbox"/> ISO 406 ISO 1101		tolerance ISO 406 ISO 1101		projection 		product family CLINCHER			
ltr	ecn no	dr	date	tolerances unless otherwise specified						title			
C				angles	linear	.XX±.01/.3		INCH/MM		NARROW BODY CLINCHER™			
				0'±2'		.XXX±.005/.13		scale 3:1		RECEPTACLE ASSEMBLY			
				dr	L. POTTEIGER	8/5/03				dwg no			
				enr	H. SUNDY	8/5/03				sheet 3 of 6 size			
				chr	H. SUNDY	8/5/03				10032480 A3			
				appd	H. SUNDY	8/5/03				type Product Customer Drawing			
sheet index	revision sheet												

form: A3



FCIconnect.com

Copyright FCI

PRODUCT NO.	NO. OF	DIM. L	DIM. L	DIM. M	DIM. M	DIM. C	DIM. C	PLATING	TERMINATION	
NOTE 7	POSITIONS	ENGLISH	METRIC	ENGLISH	METRIC	ENGLISH	METRIC	CODE	NOTE 6	
10032480-039	6	0.500	12.70	0.790	20.07	0.715	18.16	2	CONVENTIONAL	
10032480-040	7	0.600	15.24	0.890	22.61	0.815	20.70	2	CONVENTIONAL	
10032480-041	8	0.700	17.78	0.990	25.15	0.915	23.24	2	CONVENTIONAL	
10032480-042	9	0.800	20.32	1.090	27.69	1.015	25.78	2	CONVENTIONAL	
10032480-043	10	0.900	22.86	1.190	30.23	1.115	28.32	2	CONVENTIONAL	
10032480-044	11	1.000	25.40	1.290	32.77	1.215	30.86	2	CONVENTIONAL	
10032480-045	12	1.100	27.94	1.390	35.31	1.315	33.40	2	CONVENTIONAL	
10032480-046	13	1.200	30.48	1.490	37.85	1.415	35.94	2	CONVENTIONAL	
10032480-047	14	1.300	33.02	1.590	40.39	1.515	38.48	2	CONVENTIONAL	
10032480-048	15	1.400	35.56	1.690	42.93	1.615	41.02	2	CONVENTIONAL	
10032480-049	16	1.500	38.10	1.790	45.47	1.715	43.56	2	CONVENTIONAL	
10032480-050	17	1.600	40.64	1.890	48.01	1.815	46.10	2	CONVENTIONAL	
10032480-051	18	1.700	43.18	1.990	50.55	1.915	48.64	2	CONVENTIONAL	
10032480-052	19	1.800	45.72	2.090	53.09	2.015	51.18	2	CONVENTIONAL	
10032480-053	20	1.900	48.26	2.190	55.63	2.115	53.72	2	CONVENTIONAL	
10032480-054	21	2.000	50.80	2.290	58.17	2.215	56.26	2	CONVENTIONAL	
10032480-055	22	2.100	53.34	2.390	60.71	2.315	58.80	2	CONVENTIONAL	
10032480-056	23	2.200	55.88	2.490	63.25	2.415	61.34	2	CONVENTIONAL	
10032480-057	24	2.300	58.42	2.590	65.79	2.515	63.88	2	CONVENTIONAL	
10032480-058	25	2.400	60.96	2.690	68.33	2.615	66.42	2	CONVENTIONAL	
10032480-059	26	2.500	63.50	2.790	70.87	2.715	68.96	2	CONVENTIONAL	
10032480-060	27	2.600	66.04	2.890	73.41	2.815	71.50	2	CONVENTIONAL	
10032480-061	28	2.700	68.58	2.990	75.95	2.915	74.04	2	CONVENTIONAL	
10032480-062	29	2.800	71.12	3.090	78.49	3.015	76.58	2	CONVENTIONAL	
10032480-063	30	2.900	73.66	3.190	81.03	3.115	79.12	2	CONVENTIONAL	
10032480-064	31	3.000	76.20	3.290	83.57	3.215	81.66	2	CONVENTIONAL	
10032480-065	32	3.100	78.74	3.390	86.11	3.315	84.20	2	CONVENTIONAL	
10032480-066	33	3.200	81.28	3.490	88.65	3.415	86.74	2	CONVENTIONAL	
10032480-067	34	3.300	83.82	3.590	91.19	3.515	89.28	2	CONVENTIONAL	

mat'l. code				surface ISO 1302 <input checked="" type="checkbox"/> ISO 406 ISO 1101		tolerance ISO 406 ISO 1101		projection 		product family CLINCHER			
ltr	ecn	no	dr	date	tolerances unless otherwise specified				 INCH/MM scale 3:1		title		
C					angles	linear	.XX±.01/.3				NARROW BODY CLINCHER™		
					0'±2'		.XXX±.005/.13				RECEPTACLE ASSEMBLY		
					dr	L.POTTEIGER	8/5/03			dwg no		sheet 4 of 6	size
					enr	H. SUNDY	8/5/03			10032480		A3	
					chr	H. SUNDY	8/5/03						
					appd	H. SUNDY	8/5/03						
sheet index	revision sheet												

form: A3



FCIconnect.com

Copyright FCI

PRODUCT NO.	NO. OF	DIM. L	DIM. L	DIM. M	DIM. M	DIM. C	DIM. C	PLATING	TERMINATION	
NOTE 7	POSITIONS	ENGLISH	METRIC	ENGLISH	METRIC	ENGLISH	METRIC	CODE	NOTE 6	
10032480-106	6	0.500	12.70	0.790	20.07	0.715	18.16	1	INK	
10032480-107	7	0.600	15.24	0.890	22.61	0.815	20.70	1	INK	
10032480-108	8	0.700	17.78	0.990	25.15	0.915	23.24	1	INK	
10032480-109	9	0.800	20.32	1.090	27.69	1.015	25.78	1	INK	
10032480-110	10	0.900	22.86	1.190	30.23	1.115	28.32	1	INK	
10032480-111	11	1.000	25.40	1.290	32.77	1.215	30.86	1	INK	
10032480-112	12	1.100	27.94	1.390	35.31	1.315	33.40	1	INK	
10032480-113	13	1.200	30.48	1.490	37.85	1.415	35.94	1	INK	
10032480-114	14	1.300	33.02	1.590	40.39	1.515	38.48	1	INK	
10032480-115	15	1.400	35.56	1.690	42.93	1.615	41.02	1	INK	
10032480-116	16	1.500	38.10	1.790	45.47	1.715	43.56	1	INK	
10032480-117	17	1.600	40.64	1.890	48.01	1.815	46.10	1	INK	
10032480-118	18	1.700	43.18	1.990	50.55	1.915	48.64	1	INK	
10032480-119	19	1.800	45.72	2.090	53.09	2.015	51.18	1	INK	
10032480-120	20	1.900	48.26	2.190	55.63	2.115	53.72	1	INK	
10032480-121	21	2.000	50.80	2.290	58.17	2.215	56.26	1	INK	
10032480-122	22	2.100	53.34	2.390	60.71	2.315	58.80	1	INK	
10032480-123	23	2.200	55.88	2.490	63.25	2.415	61.34	1	INK	
10032480-124	24	2.300	58.42	2.590	65.79	2.515	63.88	1	INK	
10032480-125	25	2.400	60.96	2.690	68.33	2.615	66.42	1	INK	
10032480-126	26	2.500	63.50	2.790	70.87	2.715	68.96	1	INK	
10032480-127	27	2.600	66.04	2.890	73.41	2.815	71.50	1	INK	
10032480-128	28	2.700	68.58	2.990	75.95	2.915	74.04	1	INK	
10032480-129	29	2.800	71.12	3.090	78.49	3.015	76.58	1	INK	
10032480-130	30	2.900	73.66	3.190	81.03	3.115	79.12	1	INK	
10032480-131	31	3.000	76.20	3.290	83.57	3.215	81.66	1	INK	
10032480-132	32	3.100	78.74	3.390	86.11	3.315	84.20	1	INK	
10032480-133	33	3.200	81.28	3.490	88.65	3.415	86.74	1	INK	
10032480-134	34	3.300	83.82	3.590	91.19	3.515	89.28	1	INK	

mat'l. code				surface ISO 1302 <input checked="" type="checkbox"/>		tolerance ISO 406 ISO 1101		projection 		product family CLINCHER			
ltr	ecn	no	dr	date	tolerances unless otherwise specified						title		
C					angles	linear	.XX±.01/.3		INCH/MM		NARROW BODY CLINCHER™		
					0'±2'		.XXX±.005/.13		scale 3:1		RECEPTACLE ASSEMBLY		
					dr	L.POTTEIGER	8/5/03				dwg no		
					enr	H. SUNDY	8/5/03				sheet 5 of 6 size		
					chr	H. SUNDY	8/5/03				10032480 A3		
					appd	H. SUNDY	8/5/03				type Product Customer Drawing		
sheet index	revision sheet												

form: A3



FCIconnect.com

Copyright FCI

PRODUCT NO.	NO. OF	DIM. L	DIM. L	DIM. M	DIM. M	DIM. C	DIM. C	PLATING	TERMINATION	
NOTE 7	POSITIONS	ENGLISH	METRIC	ENGLISH	METRIC	ENGLISH	METRIC	CODE	NOTE 6	
10032480-139	6	0.500	12.70	0.790	20.07	0.715	18.16	2	INK	
10032480-140	7	0.600	15.24	0.890	22.61	0.815	20.70	2	INK	
10032480-141	8	0.700	17.78	0.990	25.15	0.915	23.24	2	INK	
10032480-142	9	0.800	20.32	1.090	27.69	1.015	25.78	2	INK	
10032480-143	10	0.900	22.86	1.190	30.23	1.115	28.32	2	INK	
10032480-144	11	1.000	25.40	1.290	32.77	1.215	30.86	2	INK	
10032480-145	12	1.100	27.94	1.390	35.31	1.315	33.40	2	INK	
10032480-146	13	1.200	30.48	1.490	37.85	1.415	35.94	2	INK	
10032480-147	14	1.300	33.02	1.590	40.39	1.515	38.48	2	INK	
10032480-148	15	1.400	35.56	1.690	42.93	1.615	41.02	2	INK	
10032480-149	16	1.500	38.10	1.790	45.47	1.715	43.56	2	INK	
10032480-150	17	1.600	40.64	1.890	48.01	1.815	46.10	2	INK	
10032480-151	18	1.700	43.18	1.990	50.55	1.915	48.64	2	INK	
10032480-152	19	1.800	45.72	2.090	53.09	2.015	51.18	2	INK	
10032480-153	20	1.900	48.26	2.190	55.63	2.115	53.72	2	INK	
10032480-154	21	2.000	50.80	2.290	58.17	2.215	56.26	2	INK	
10032480-155	22	2.100	53.34	2.390	60.71	2.315	58.80	2	INK	
10032480-156	23	2.200	55.88	2.490	63.25	2.415	61.34	2	INK	
10032480-157	24	2.300	58.42	2.590	65.79	2.515	63.88	2	INK	
10032480-158	25	2.400	60.96	2.690	68.33	2.615	66.42	2	INK	
10032480-159	26	2.500	63.50	2.790	70.87	2.715	68.96	2	INK	
10032480-160	27	2.600	66.04	2.890	73.41	2.815	71.50	2	INK	
10032480-161	28	2.700	68.58	2.990	75.95	2.915	74.04	2	INK	
10032480-162	29	2.800	71.12	3.090	78.49	3.015	76.58	2	INK	
10032480-163	30	2.900	73.66	3.190	81.03	3.115	79.12	2	INK	
10032480-164	31	3.000	76.20	3.290	83.57	3.215	81.66	2	INK	
10032480-165	32	3.100	78.74	3.390	86.11	3.315	84.20	2	INK	
10032480-166	33	3.200	81.28	3.490	88.65	3.415	86.74	2	INK	
10032480-167	34	3.300	83.82	3.590	91.19	3.515	89.28	2	INK	

mat'l. code				surface ISO 1302 <input checked="" type="checkbox"/> ISO 406 ISO 1101		tolerance ISO 406 ISO 1101		projection 		product family CLINCHER			
ltr	ecn	no	dr	date	tolerances unless otherwise specified					title			
C					angles	linear	.XX±.01/.3			INCH/MM			
					0'±2'		.XXX±.005/.13			scale 3:1			
							.XXXX±.0020/.051			sheet 6 of 6 size			
					dr	L.POTTEIGER	8/5/03				dwg no		
				enr	H. SUNDY	8/5/03		10032480					
				chr	H. SUNDY	8/5/03		A3					
				appd	H. SUNDY	8/5/03		type Product Customer Drawing					
sheet index	revision sheet												

form: A3