

## Eurostyle Screw Terminal Strips for Panel / Chassis Mounting

### TYPE 327-FU (-HDS)

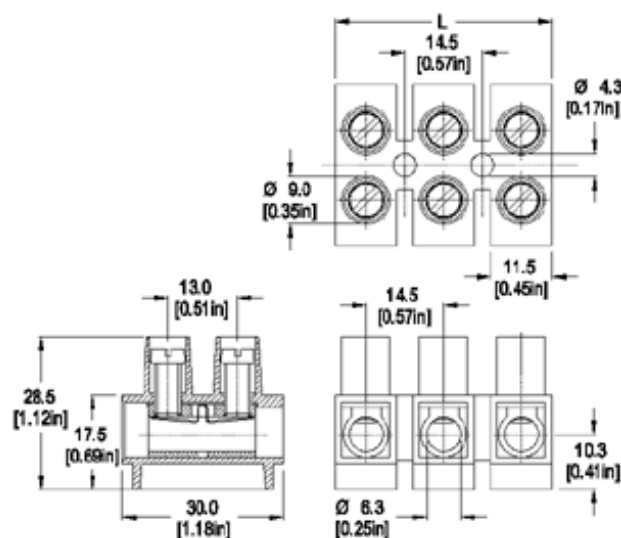
14.5 mm spacing - 1 to 12 poles

[Distributor Stock Check](#)

Series	Download PDF	3D Model	Can plug with	How to order	Color specifications	Print
--------	--------------	----------	---------------	--------------	----------------------	-------



Raised Base



Dimensions: mm (in.)

Length of Connector (L)

L = No. of Poles x Center to Center Spacing - 3 mm

**When locating connector, allow 0.5 mm clearance around it for process-induced variations.**

### Description

The -FU designation provides a higher profile and therefore higher creepage distances to meet certain VDE design requirements.

- raised base
- Recommended mounting hardware: M4 pan head screw (#8-32 pan head screw) or similar sized sheet metal screw, self-tapping screw or rivet.

### Technical Data

**Center to Center Spacing:** 14.5 mm (0.571 in.)

**Nominal Cross Section:**

16 mm<sup>2</sup> (24796 mils<sup>2</sup>)

**Wire Stripping Length:** 9 mm (0.35 in.)

### Application

### Approval Information

UL File No.E69841

CSA File No.LR24322



Rating	Current(A)	Voltage(V)	Application group	AWG
UL	65	600	B,C,D	14-6
CSA	80	600	B,C,D,E	14-6

### Screw Tightening Torque:

UL: 16.0 lbf·in

CSA: 2.0 Nm

### International Approvals:



The panel and chassis mounted series are ideal for connecting electrical control panels to external power sources, signal sources, other electrical panels and electrical loads of many types and sizes. The electrical panel's or electrical enclosure's internal components and circuitry are connected to their appropriate external electrical circuitry through these terminal blocks. The screw tightened connections result in high contact forces thus promoting safe wire secureness and retention, low electrical resistance and safe reusable connections. All wire retention screws are captive in their towers and they cannot fall out during transportation, installation and use. Wire protectors are available to protect small gauge stranded wires from screw damage. These terminal strips can be completely enclosed within the enclosures or be placed at an enclosure opening with one side accessible for external cabling and the other for internal wiring. They can be specially marked to your specifications.

Material

**Molding:** Polyamide, self extinguishing to UL 94, V-0, color off-white  
**Temperature limits:**  
**Short Time:** 140°C (284°F)  
**Continuous:** RTI 105°C (221°F)  
**Low Limit:** -40°C (-40°F)  
**Comparative Tracking Index:** CTI > 600  
**Oxygen Index Rating:** 33%

**Terminal Body:** Nickel plated copper alloy  
**Wire Protector:** Stainless steel strip  
**Screw:** M5, Slotted head, zinc plated blue passivated, steel substrate

Top of page

How to order

- Item327-FU (-HDS)
- Options
- CN: Consecutive Numbering (hot stamped numbers)
- SM: Special Marking (please provide sketch)
- PS: Clear Chromate Passivated, zinc plated, Steel Screws
- G05: Gold Plating (5 micro inches)
- G30: Gold Plating (30 micro inches)
- S30: Silver Plating (30 micro inches)
- WS: Wire Stop (to control the wire insertion depth)

**Note:** Plated component for non HDS versions only: terminal body WS is for HDS versions only

**Ordering Note:** Series 300 Terminal Strips can be supplied in other colors. Please consult factory.

Request sample  
Request quote

Quantity

**Accessories**  
BST Marking Strips for terminal strips.  
Jumper Combs, Series 300-J.

327-FU

WIRE PROTECTOR:  
with: - HDS

POLES:  
01 to 12

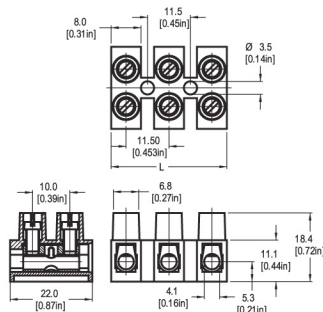
/

Add to shopping cart

## Series 300

## Types 324 (-HDS)

11.5 mm spacing • 1 to 12 poles

RoHS  
WEEE

Dimensions: mm (in.) When locating connector, allow 0.5 mm clearance around it for process-induced variations.  
Length of Connector (L) L = No. of Poles x Center to Center Spacing - 3.5 mm

## DESCRIPTION

- Standard version
- Recommended mounting hardware: M3.5 pan head screw (#6-32 pan head screw)

## APPLICATION

Due to high resistance to vibrations, these terminal strips serve in applications using line voltage motors or in construction vehicle. Terminal strips are also used in Heating/ventilation/air conditioning (HVAC) products.

## TECHNICAL DATA

Center to Center Spacing: 11.5 mm (0.453 in.) Wire Stripping length: 7 mm (0.28 in.)  
Nominal Cross Section: 4 mm<sup>2</sup> (6199 mils<sup>2</sup>)

## APPROVAL INFORMATION

	Rating	Current (A)	Voltage (V)	AWG	Application Group	Screw Tightening Torque
File No.: E69841	UL	35	300	22-8	B,D	max. 7.0 lbf.in.
File No.: LR24322	CSA	40	300	22-10	B,D,E	max. 0.8 Nm

UL 300V / C and 600 V / D: if mounted on a suitable insulated surface, on standoffs, or equivalent means to maintain spacing form live parts to the mounting surface.  
UL: wire range is extended to 26 AWG for factory wiring.  
Version HDS is CSA certified for 26-10 AWG.  
International Approvals: MATERIAL

MOLDING: Polyamide, self extinguishing to UL 94, V-2, off-white

TEMPERATURE LIMITS: Short time: 140°C (284°F)  
Continuous: RTI 105°C (221°F)  
Low limit: -40°C (-40°F)  
Comparative Tracking Index: CTI > 600  
Oxygen Index Rating: 25%

Terminal Body: nickel plated copper alloy

Wire Protector: stainless steel strip

Screw: yellow chromate passivated, zinc plated, steel, M3.5

## ACCESSORIES

- BST Marking Strips.
- Jumper Combs, Series 300-J.

OPTIONS See How to Order. If more than one option is required, please separate each option with a dash (-).

1	2	3	4

**CN:** Consecutive Numbering (hot stamped Black numbers)  
**SM:** Special Marking (please provide sketch)  
**BS:** Copper Alloy Screws  
**PS:** Clear chromate passivated, zinc plated, steel screws  
**G05:** Gold Plating (5 micro inches)  
**G30:** Gold Plating (30 micro inches)  
**S30:** Silver Plating (30 micro inches)  
 (Plated components: for non HDS versions only; terminal body)

## HOW TO ORDER

WIRE PROTECTOR: with: - HDS	POLES: 01 to 12	OPTIONS: CN, SM, BS, PS, G05, G30, S30
324	/	-

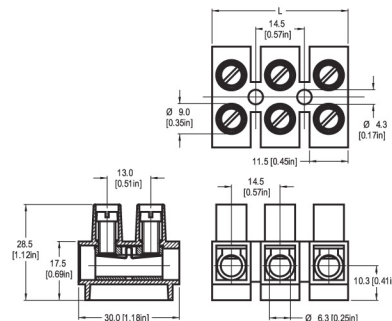
## Series 300

## Types 327-FU (-HDS)

14.5 mm spacing • 1 to 12 poles



Raised Base



Dimensions: mm (in.) When locating connector, allow 0.5 mm clearance around it for process-induced variations.  
Length of Connector (L) L = No. of Poles x Center to Center Spacing - 3 mm

## DESCRIPTION

The -FU designation provides a higher profile and therefore higher creepage distances to meet certain VDE design requirements.

- Raised base
- Recommended mounting hardware: M4 pan head screw (#8-32 pan head screw)

## APPLICATION

Due to high resistance to vibrations, these terminal strips serve in applications using line voltage motors or in construction vehicle. Terminal strips are also used in Heating/ventilation/air conditioning (HVAC) products.

## TECHNICAL DATA

Center to Center Spacing: 14.5 mm (0.571 in.) Wire Stripping length: 9 mm (0.35 in.)  
Nominal Cross Section: 16 mm<sup>2</sup> (24796 mils<sup>2</sup>)

## APPROVAL INFORMATION

	Rating	Current (A)	Voltage (V)	AWG	Application Group	Screw Tightening Torque
File No.: E69841	UL	65	600	14-6	B,C,D	max. 16.0 lbf.in.
File No.: LR24322	CSA	80	600	14-6	B,C,D,E	max. 2.0 Nm

International Approvals: MATERIAL

MOLDING: Polyamide, self extinguishing to UL 94, V-0, off-white

TEMPERATURE LIMITS: Short time: 140°C (284°F)  
Continuous: RTI 105°C (221°F)  
Low limit: -40°C (-40°F)  
Comparative Tracking Index: CTI > 600  
Oxygen Index Rating: 33%

Terminal Body: nickel plated copper alloy

Wire Protector: stainless steel strip

Screw: yellow chromate passivated, zinc plated, steel, M5

## ACCESSORIES

- BST Marking Strips.
- Jumper Combs, Series 300-J.

OPTIONS See How to Order. If more than one option is required, please separate each option with a dash (-).

1	2	3	4

**CN:** Consecutive Numbering (hot stamped Black numbers)  
**SM:** Special Marking (please provide sketch)  
**PS:** Clear chromate passivated, zinc plated, steel screws  
**WS:** Wire Stop (to control the wire insertion depth)  
**G05:** Gold Plating (5 micro inches)  
**G30:** Gold Plating (30 micro inches)  
**S30:** Silver Plating (30 micro inches)  
 (Plated components: for non HDS versions only; terminal body)  
 WS is for HDS versions only

## HOW TO ORDER

WIRE PROTECTOR: with: - HDS	POLES: 01 to 12	OPTIONS: CN, SM, PS, G05, G30, S30
327-FU	/	-