

# LUXEON Rebel ES

*High value and easy design-in*



LUXEON Rebel ES gives you the flexibility you need for designing luminaires and lamps. Tested and binned at 700 mA, confidently design LUXEON Rebel ES into high lumen applications or create more energy efficient devices using the same emitter. Luminaire manufacturers and designers count on LUXEON Rebel ES for quality, reliability and in-device performance.

## Features

- Tested and specified in real-world application conditions
- Superior >125lm/W efficacy enables efficient and sustainable applications
- Industry leading lumen maintenance
- 1/4th ANSI binning
- Very small optical source size
- Lead and mercury free, RoHS and REACH Compliant
- Complete design resources including electrical, mechanical and optical files

## Benefits

- Broad portfolio of emitters for indoor and outdoor applications
- All combinations of CCT and Quality-of-Light (CRI)
- Highest lumens, lm/W and lm/\$
- Lower system energy consumption and better lighting efficiency
- Faster payback periods and lower total ownership costs
- Easier to build ENERGY STAR® certified solutions

## Key Applications

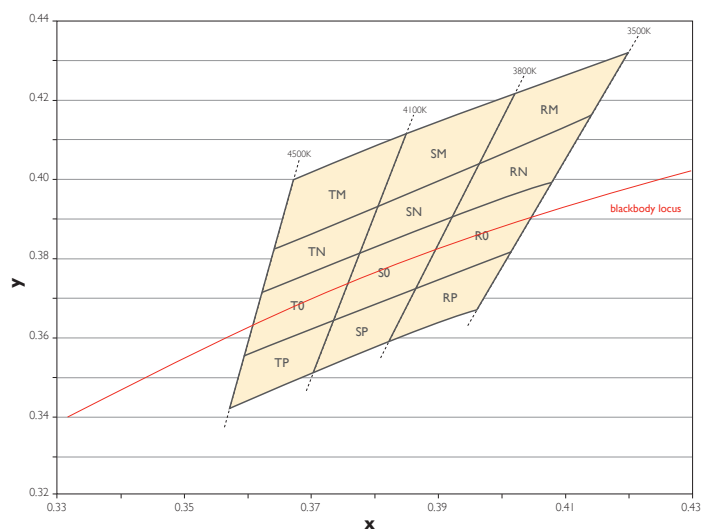
- High bay and low bay
- Outdoor
- Specialty

### LUXEON Rebel ES Product Characteristics

Part Number	Nominal ANSI CCT	CRI Min	Performance At Test Current @ 700 mA		Luminous Flux (lm)			Forward Voltage (V <sub>f</sub> )			Efficacy (lm/W)		
			Min Luminous Flux (lm)	Test Condition	350 mA	700 mA	1000 mA	350 mA	700 mA	1000 mA	350 mA	700 mA	1000 mA
LXML-PWN2	4100 neutral white	60	200	T <sub>j</sub> = 25°C	130	230	310	2.85	3.00	3.10	130	110	74
LXML-PWC2	5650 cool white	60	200	T <sub>j</sub> = 25°C	135	235	320	2.85	3.00	3.10	135	112	76
LXW9-PW27	2700K	90	120	T <sub>j</sub> = 25°C	75	135	184	2.85	3.00	3.10	75	64	44
LXW9-PW30	3000K	90	140	T <sub>j</sub> = 25°C	81	145	197	2.85	3.00	3.10	81	69	47
LXW8-PW35	3500K	80	160	T <sub>j</sub> = 25°C	103	185	252	2.85	3.00	3.10	103	88	60
LXH7-PW40	4000K	70	180	T <sub>j</sub> = 25°C	114	205	279	2.85	3.00	3.10	114	98	66
LXW8-PW40	4000K	80	170	T <sub>j</sub> = 25°C	106	190	258	2.85	3.00	3.10	106	90	61
LXW8-PW50	5000K	80	180	T <sub>j</sub> = 25°C	111	200	272	2.85	3.00	3.10	111	95	65

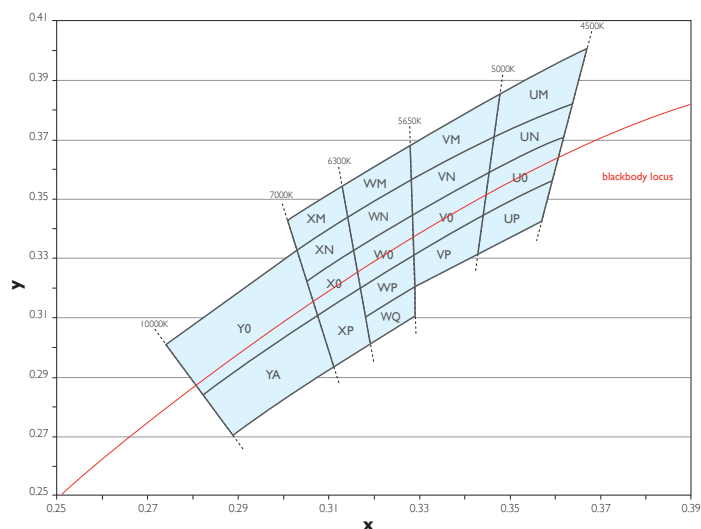
1. Minimum luminous flux performance within published operating conditions. Philips Lumileds maintains a tolerance of ± 6.5% on luminous flux measurements and ± 2 on CRI measurements.
2. Philips Lumileds maintains a tolerance of ±0.06V on forward voltage measurements.

## 4100K Neutral White Bin Structure



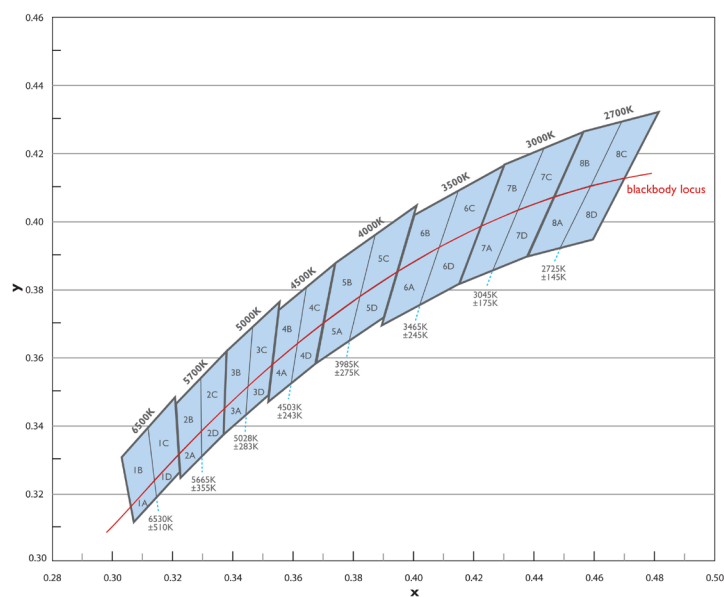
For part number LXML-PWN2.

## 5650K Cool White Bin Structure



For part number LXML-PWC2.

## ANSI 1/4th Quadrant Color Bin Structure



For part numbers: LXW9-PW27, LXW9-PW30, LXW8-PW35, LXW8-PW40, and LXW8-PW50.

Please refer to the LUXEON Rebel ES technical datasheet (DS61) for more information.



Philips Lumileds Lighting Company shall not be liable for any kind of loss of data or any other damages, direct, indirect or consequential, resulting from the use of the provided information and data. Although Philips Lumileds Lighting Company has attempted to provide the most accurate information and data, the materials and services information and data are provided "as is" and Philips Lumileds Lighting Company neither warranties, nor guarantees the contents and correctness of the provided information and data. Philips Lumileds Lighting Company reserves the right to make changes without notice. You as user agree to this disclaimer and user agreement with the download or use of the provided materials, information and data.



©2014 Philips Lumileds Lighting Company. All rights reserved.  
LUXEON is a registered trademark of the Philips Lumileds Lighting Company in the United States and other countries.

[www.philipslumileds.com](http://www.philipslumileds.com)  
[www.philipslumileds.cn.com](http://www.philipslumileds.cn.com)