

LAN Components

10/100BASE-TX

Pulse Transformers

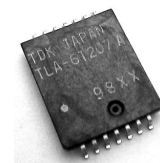
TLA-6T207A/208A/209A/210A

FEATURES

- Low profile(H=2.1mm max.) for PCMCIA(PC card).
- 2 pulse transformers and 2 common-mode chokes are integrated into 14-pin SMD package.
- Greater than 350μH[100kHz] at DC current bias 8mA.
- TLA-6T207A is suitable for use with TSC's 78Q2120, ICS's ICS1890, MICRO LINEAR's ML6673, 6674.
- TLA-6T208A is suitable for use with QSI's QS6611.
- TLA-6T209A is suitable for use with LSI LOGIC's 80220/80221.
- TLA-6T210A is suitable for use with QSI's QS6612.
- Tape and reel packaging are available(TLA-6T2□□-T: Tape and reel, TLA-6T2 □□: Bulk).
- ISO9001/QS9000 quality standards certification.

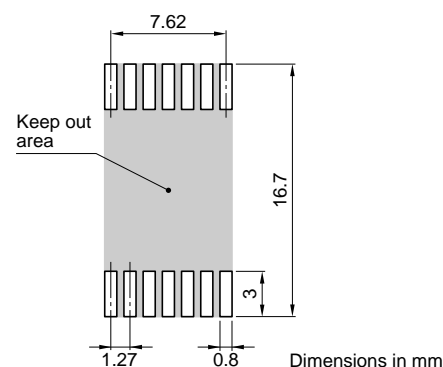
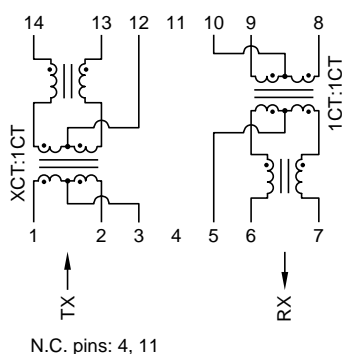
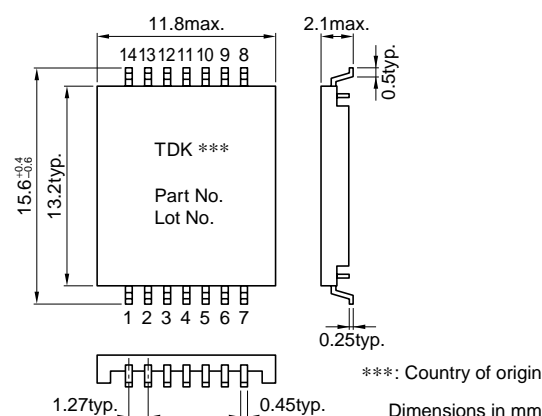
GENERAL SPECIFICATIONS

Pulse transformer	2
Common-mode choke	2
Port	1
Operating temperature range	0 to +70°C
Storage temperature range	-40 to +85°C
Withstanding voltage	Erms:1500V[60s]



SHAPES AND DIMENSIONS/CIRCUIT DIAGRAM

RECOMMENDED PC BOARD PATTERN



ELECTRICAL CHARACTERISTICS

Part No.	Turns ratio 1,3,2:14,12,13 6,5,7:9,10,8	Inductance (μH)min. [DC bias 8mA, 100kHz] 14-13 9-8	Insertion loss (dB)max. [0.1 to 100MHz] 1,2-14,13 9,8-6,7	Inter-winding stray capacitance (pF)max.[100kHz] 1,2-14,13 6,7-9,8
TLA-6T207A(-T)	1CT:1CT	350	1	25
TLA-6T208A(-T)	1.41CT:1CT	350	2	25
TLA-6T209A(-T)	2CT:1CT	350	3.5	25
TLA-6T210A(-T)	1.25CT:1CT	350	1.5	25

• Ta=25°C

LAN Components

10/100BASE-TX

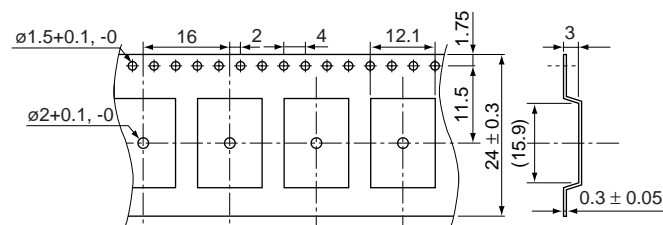
Pulse Transformers

TLA-6T207A/208A/209A/210A

PACKAGING STYLES

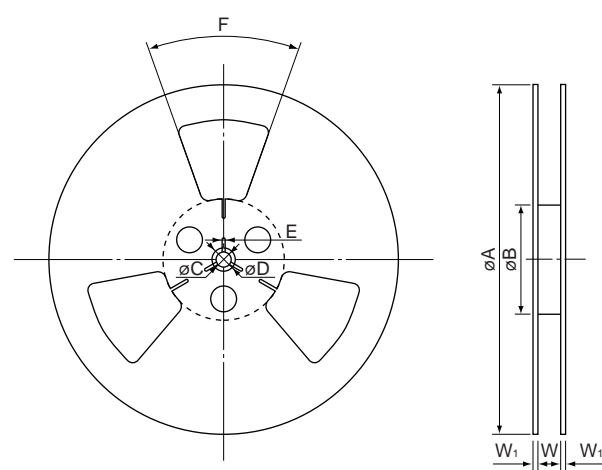
Quantity : 1500pieces/reel

TAPE DIMENSIONS



Dimensions in mm

REEL DIMENSIONS

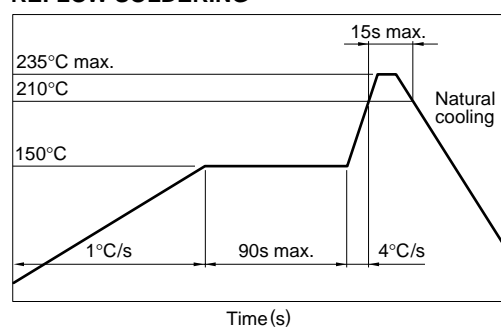


Dimensions in mm

A	B	C	D	E	F	W	W ₁
ø330±2	ø80±1	ø13±1	ø21±1	2±0.5	3-40°	25.5±1.5	2±0.5

RECOMMENDED SOLDERING CONDITION

REFLOW SOLDERING



- Temperature is measured on the top of products body(Using thermocoupler for measurement).
- This profile is reference data we recommend. Please check in your actual process.