

PRODUCT NUMBER

20020004-XXXXXXLF

20020004-

PITCH

C: 3.50 mm
D: 3.81 mm

POLES



02: 2 POLES
03: 3 POLES
04: 4 POLES

24: 24 POLES

LF : DENOTED RoHS COMPATIBLE



1 : STANDARD PRODUCT
W/ BOX PACKING

SCREW CODE

| PROPERTY TABLE | | | | |
|---|----------|---|----------|------|
| FCI SERIES NAME | | 01-350 | 01-381 | |
| PITCH (mm) | | 3.50 | 3.81 | |
| VOLTAGE RATING (VAC) | | 300 | 300 | |
| CURRENT RATING (A) | cULus | 10 | 10 | |
| | VDE | 10.5 | 10.5 | |
| APPLICABLE WIRE RANGE (AWG) | 1-WIRE | 16~26 | 16~26 | |
| | 2-WIRE | 20 | 20 | |
| WIRE CROSS SECTION (mm ²) | SOLID | 1-WIRE | 1.5 | 1.5 |
| | | 2-WIRE | 0.5 | 0.5 |
| | STRANDED | 1-WIRE | 1.5 | 1.5 |
| | | 2-WIRE | 0.75 | 0.75 |
| OPENING CONTACT HOUSING(mm ²) | | 1.6x2.5 | 1.7x2.5 | |
| WIRE STRIP LENGTH(mm) | | 6~7 | 6~7 | |
| TORQUE +/– 10% (N-m/Lb-in) | | 0.23/2.0 | 0.23/2.0 | |
| SCREW | | M2x0.4 | M2x0.4 | |
| WITHSTANDING VOLTAGE (kV) | cULus | 1.6 | 1.6 | |
| | VDE | 2.5 | 2.5 | |
| OPERATING TEMP. (°C) | | –40~+115 | –40~+115 | |
| POLES AVAILABLE | | 02~24 | 02~24 | |
| SAFETY CERTIFICATE | |   | | |

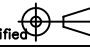
HOUSING CODE

| CODE | COLOR | AVAILABILITY |
|------|-------------------|-----------------|
| 1 | GREEN(RAL 6018/T) | STANDARD |
| 2 | BLACK | ON REQUEST ONLY |
| 3 | GREY(RAL 7004/P) | ON REQUEST ONLY |
| 4 | BLUE(RAL 5015/A) | ON REQUEST ONLY |

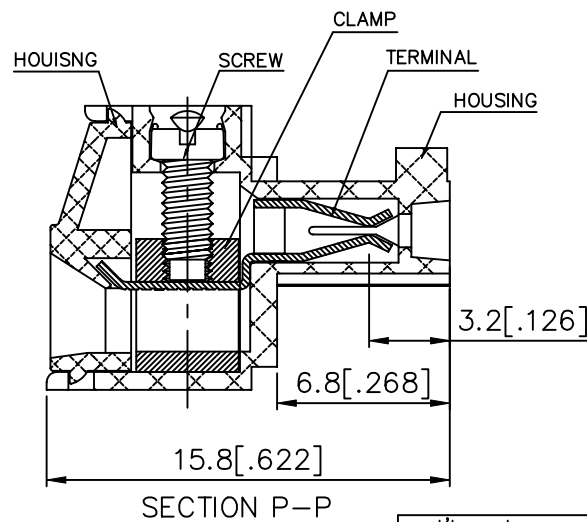
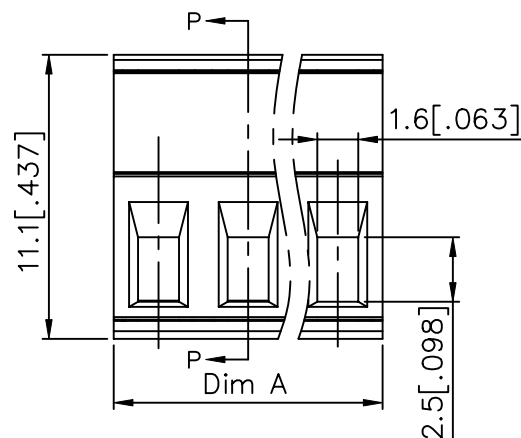
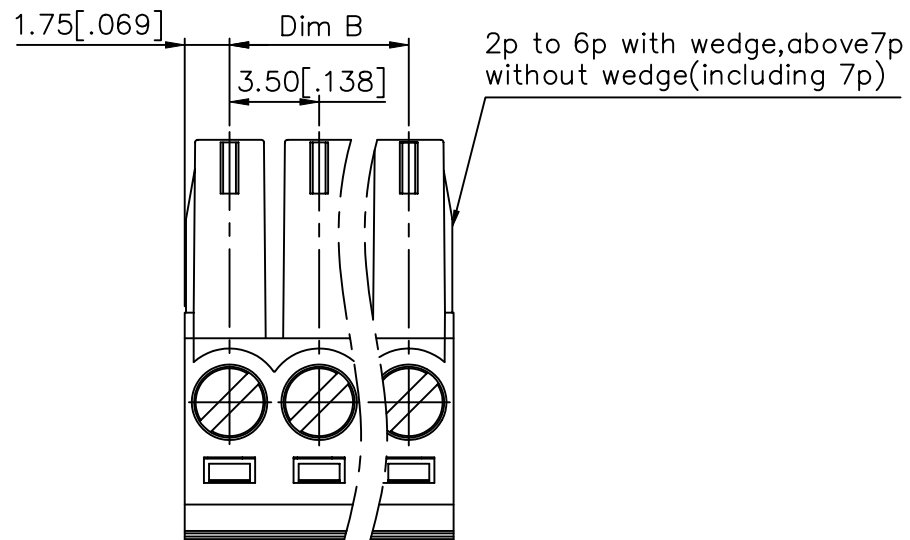
| CODE | SCREW TYPE | AVAILABILITY |
|------|---|-----------------|
| A | -/+  | ON REQUEST ONLY |
| B | -  | STANDARD |

NOTES:

1. MATERIALS
1-1 HOUSING: THERMALPLASTIC RESIN, UL 94V-0 RATED.
1-2 SCREW: STEEL, ZINC PLATED.
1-3 CLAMP: COPPER ALLOY, NICKEL PLATED.
1-4 TERMINAL: COPPER ALLOY, TIN PLATED.
2. PRODUCT SPECIFICATION REFER TO FCI GS-12-625.
3. BOXED PACKAGING,
DETAILED PRODUCT PACKING SPECIFICATION REFER TO FCI GS-14-1394.
4. FCI, SAFETY CERTIFICATE LOGO AND SERIES NAME TO BE SHOWN ON
PRODUCT SURFACE.
5. THE PRODUCTS WHERE THE PART NUMBER END IN "LF" MEET THE EUROPEAN
UNION DIRECTIVE AND OTHER COUNTRY REGULATIONS AS DESCRIBED IN
GS-22-008.

| mat'l. code | | | | surface | tolerance | projection | product family |
|-------------|----------|----|--------|---------------------------------------|----------------|---|------------------------------------|
| | | | | ASME Y14.5 | ASME Y14.5 |  | TERMINAL BLOCK |
| ltr | ecn no | dr | date | tolerances unless otherwise specified | | | title |
| E | T10-0127 | WL | 080910 | angles | X.±0.5[.020] | MM | TERMINAL BLOCK |
| F | T10-0147 | WL | 091310 | to | X.X±0.3[.012] | INCH | PLUGGABLE PLUG, SIGNAL, W/O FLANGE |
| G | T10-0159 | WL | 100410 | ±1° | X.XX±0.1[.004] | scale | CONTACT UP SIDE |
| H | T10-0187 | WL | 121410 | dr | BEER FU | 062509 | dwg no |
| J | T10-0193 | WL | 122310 | enrg | BEER FU | 062509 | sheet 1 of 3 |
| K | T11-0013 | WL | 040811 | chr | GARY HSIEH | 062509 | size |
| L | T-004746 | WL | 072011 | appd | JOSEPH HSIA | 062509 | 20020004 |
| sheet | revision | L | L | L | | | A4 |
| index | sheet | 1 | 2 | 3 | | | type |
| | | | | | | | CUSTOMER Drawing |

| PRODUCT NUMBER | SERIES NAME | PITCH |
|--------------------|-------------|---------|
| 20020004-CXXXXXXLF | 01-350 | 3.50 mm |



N = Number of Poles
Dim A = $N \times 3.5[.138]$
Dim B = $(N-1) \times 3.5[.138]$

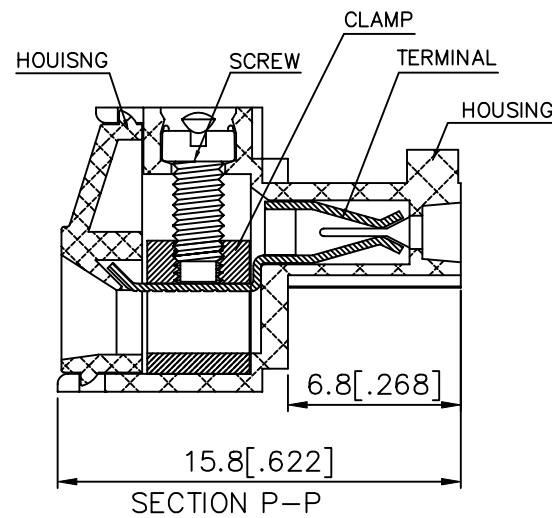
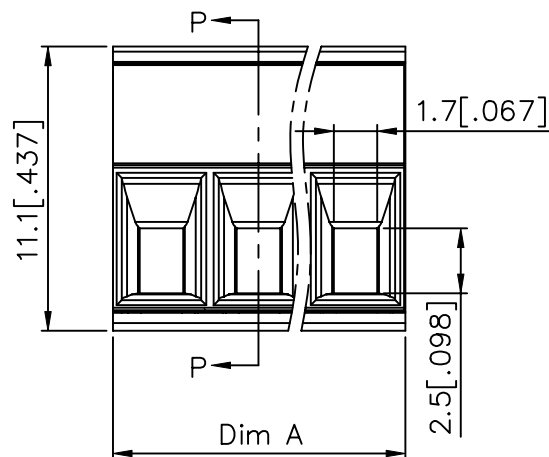
| POLES | Dim A | Dim B |
|--------|------------------|-------|
| 2-6p | $\pm 0.15[.006]$ | |
| 7-12p | $\pm 0.20[.008]$ | |
| 13-18p | $\pm 0.25[.010]$ | |
| 19-24p | $\pm 0.30[.012]$ | |

| | | | | | | | |
|-------------|----------|-------|----|-------------------------|---|--------------------------|------------------------------------|
| mat'l. code | | | | surface ASME Y14.5 ✓ | tolerance ASME Y14.5 | projection MM INCH | product family TERMINAL BLOCK |
| ltr | ecn | no | dr | date | | | title |
| L | | | | | | | TERMINAL BLOCK |
| | | | | angles | X. $\pm 0.5[.020]$ X.X $\pm 0.3[.012]$ | scale | PLUGABLE, PLUG, SIGNAL, W/O FLANGE |
| | | | | X $\pm 1^\circ$ | X.XX $\pm 0.1[.004]$ | | dwg no 20020004 |
| | | | | dr | BEER FU 062509 | | sheet 2 of 3 |
| | | | | enr | BEER FU 062509 | | size A4 |
| | | | | chr | GARY HSIEH 062509 | | |
| | | | | app | JOSEPH HSIA 062509 | | |
| sheet index | revision | sheet | | | | | type CUSTOMER Drawing |



| PRODUCT NUMBER | SERIES NAME | PITCH |
|--------------------|-------------|---------|
| 20020004-DXXXXXXLF | 01-381 | 3.81 mm |

1.91[.075] Dim B
3.81[.150]
2p to 6p with wedge, above 7p
without wedge (including 7p)



N = Number of Poles
Dim A = $N \times 3.81[.150]$
Dim B = $(N-1) \times 3.81[.150]$

| POLES | Dim A | Dim B |
|--------|------------------|-------|
| 2-6p | $\pm 0.15[.006]$ | |
| 7-12p | $\pm 0.20[.008]$ | |
| 13-18p | $\pm 0.25[.010]$ | |
| 19-24p | $\pm 0.30[.012]$ | |

| | | | | | | | |
|-------------|----------|-------|----|---------------------------------------|-------------------------|----------------|------------------------------------|
| mat'l. code | | | | surface ASME Y14.5 ✓ | tolerance ASME Y14.5 | projection | product family TERMINAL BLOCK |
| ltr | ecn | no | dr | date | | | title |
| L | | | | | | | TERMINAL BLOCK |
| | | | | angles | $X. \pm 0.5[.020]$ | MM | PLUGABLE, PLUG, SIGNAL, W/O FLANGE |
| | | | | tolerances unless otherwise specified | $X.X \pm 0.3[.012]$ | INCH | dwg no |
| | | | | $X' \pm 1'$ | $X.XX \pm 0.1[.004]$ | scale | sheet 3 of 3 size |
| | | | | dr | BEER FU | 062509 | 20020004 |
| | | | | enr | BEER FU | 062509 | A4 |
| | | | | chr | GARY HSIEH | 062509 | |
| | | | | appd | JOSEPH HSIA | 062509 | |
| sheet index | revision | sheet | | | | | type |
| | | | | | | | CUSTOMER Drawing |