

DESCRIPTION : ABOVE PCB, DECK AND PUSH ROD LOCATION ARE AS VIEW BY USER.

PRODUCT NO.	PUSH ROD LOCATION		STAND-OFF HEIGHT	CLOSEST TO PCB EJ HDR ASS'Y ⑥ 61557-*****	FARTHEST FROM PCB EJ HDR ASS'Y ⑦ 61556-*****	THREADED INSERT (2 PCS) ⑧ 61553-***	MATING RECEPTACLE ⑨	P.C.B SIDE	RECOMMENDED P.C.B LAYOUT	MOUNT STYLE TO PCB AND PUSH ROD SIDE
① 61555-*****	DECK CLOSEST TO PCB	DECK FARTHEST TO PCB								
000CA	LEFT	RIGHT	0.0	100CA	000CA	0000	100 POSITIONS (2x50) 0.8mm RECEPTACLE  PART NO. 73277-101000	ABOVE	SEE DRAWING NO.: TA-1050	
020CA	LEFT	RIGHT	2.0	120CA	020CA	0020				
022CA	LEFT	RIGHT	2.2	122CA	022CA	0022				
040CA	LEFT	RIGHT	4.0	140CA	040CA	0040				
043CA	LEFT	RIGHT	4.3	143CA	043CA	0043				
050CA	LEFT	RIGHT	5.0	150CA	050CA	0050				
100CA	RIGHT	LEFT	0.0	000CA	100CA	0000				
120CA	RIGHT	LEFT	2.0	020CA	120CA	0020				
122CA	RIGHT	LEFT	2.2	022CA	122CA	0022				
140CA	RIGHT	LEFT	4.0	040CA	140CA	0040				
143CA	RIGHT	LEFT	4.3	043CA	143CA	0043				
150CA	RIGHT	LEFT	5.0	050CA	150CA	0050				
200CA	RIGHT	RIGHT	0.0	000CA	000CA	0000				
206CA	RIGHT	RIGHT	0.6	006CA	006CA	0006				
220CA	RIGHT	RIGHT	2.0	020CA	020CA	0020				
222CA	RIGHT	RIGHT	2.2	022CA	022CA	0022				
240CA	RIGHT	RIGHT	4.0	040CA	040CA	0040				
243CA	RIGHT	RIGHT	4.3	043CA	043CA	0043				
250CA	RIGHT	RIGHT	5.0	050CA	050CA	0050				
300CA	LEFT	LEFT	0.0	100CA	100CA	0000				
320CA	LEFT	LEFT	2.0	120CA	120CA	0020				
322CA	LEFT	LEFT	2.2	122CA	122CA	0022				
340CA	LEFT	LEFT	4.0	140CA	140CA	0040				
343CA	LEFT	LEFT	4.3	143CA	143CA	0043				
350CA	LEFT	LEFT	5.0	150CA	150CA	0050				

#### ORDERING INFORMATION

THREADED INSERT ASSEMBLED BY BERG		
NAME	PART NO.	Q'TY
① EJECT HEADER ASS'Y	61555-*****	1
⑨ MATING RECEPTACLE	73277-101000	2
THREADED INSERT ASSEMBLED BY CUSTOMER		
NAME	PART NO.	Q'TY
⑥ DECK CLOSEST TO PCB	61557-*****	1
⑦ DECK FARTHEST FROM PCB	61556-*****	1
⑧ M2 INSERT	61553-****	2
⑨ MATING RECEPTACLE	73277-101000	2

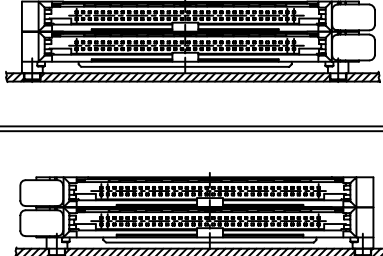
mat'l code				tolerance unless otherwise specified		CUSTOMER COPY	ELECTRONICS	
rev.	ecn no.	dr	date	linear	± 0.30	projection	title	code
A	T60342	W	07/25/96				CARDBUS EJ HEADER	TWN
B	T60488	W	12/10/96				SMT, TYPE 1/2/3	sheet
C	T70009	W	01/04/97	angles	± 2°		product family : PCMCIA	1 of 9
D	T70275	W	07/09/97	dr	WENDY CHEN	07/25/96	unit	
E	T80260	W	06/22/98	enrg	JOSEPH HSIA	07/25/96	mm/inch	
F	T00103	W	04/19/00	chr	JOSEPH HSIA	07/25/96	scale	
				appd	JENN TSAO	07/25/96	1:1	
sheet	revision	F	E	E	E	E	F	F
index	sheet	1	2	3	4	5	6	7

Tous droits strictement reserves. Reproduction ou communication a des tiers int sous quelque forme que ce soit sans autorisation ecrite du proprietaire. propriete de c BERG ELECTRONICS. Droits de reproduction BERG ELECTRONICS by

BERG  
ELECTRONICS


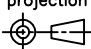
All rights strictly reserved. Reproduction or issue to third parties in any for without the written authority from the proprietor. Property of c BERG ELECTRONICS. Copyright BERG ELECTRONICS by

DESCRIPTION : ABOVE PCB, DECK AND PUSH ROD LOCATION ARE AS VIEW BY USER.

PRODUCT NO.	PUSH ROD LOCATION		STAND-OFF HEIGHT	CLOSEST TO PCB	FARTHEST FROM PCB	THREADED INSERT (2 PCS) ① 61553-***	MATING RECEPTACLE ⑤	P.C.B SIDE	RECOMMENDED P.C.B LAYOUT	MOUNT STYLE TO PCB AND PUSH ROD SIDE
	DECK CLOSEST TO PCB	DECK FARTHEST TO PCB		EJ HDR ASS'Y ② 61557-*****	EJ HDR ASS'Y ③ 61556-*****					
200CAS	RIGHT	RIGHT	0.0	000CAS	000CAS	0000	100 POSITIONS (2x50) 0.8mm RECEPTACLE  PART NO. 73277-101000	ABOVE	SEE DRAWING NO.: TA-1050	
206CAS	RIGHT	RIGHT	0.6	006CAS	006CAS	0006				
220CAS	RIGHT	RIGHT	2.0	020CAS	020CAS	0020				
222CAS	RIGHT	RIGHT	2.2	022CAS	022CAS	0022				
240CAS	RIGHT	RIGHT	4.0	040CAS	040CAS	0040				
243CAS	RIGHT	RIGHT	4.3	043CAS	043CAS	0043				
250CAS	RIGHT	RIGHT	5.0	050CAS	050CAS	0050				
300CAS	LEFT	LEFT	0.0	100CAS	100CAS	0000				
320CAS	LEFT	LEFT	2.0	120CAS	120CAS	0020				
322CAS	LEFT	LEFT	2.2	122CAS	122CAS	0022				
340CAS	LEFT	LEFT	4.0	140CAS	140CAS	0040				
343CAS	LEFT	LEFT	4.3	143CAS	143CAS	0043				
350CAS	LEFT	LEFT	5.0	150CAS	150CAS	0050				

#### ORDERING INFORMATION

THREADED INSERT ASSEMBLED BY BERG		
NAME	PART NO.	Q'TY
① EJECT HEADER ASS'Y	61555-*****	1
⑤ MATING RECEPTACLE	73277-101000	2
NAME	PART NO.	Q'TY
② DECK CLOSET TO PCB	61557-*****	1
③ DECK FARTHEST FROM PCB	61556-*****	1
④ M2 INSERT	61553-****	2
⑤ MATING RECEPTACLE	73277-101000	2

mat'l code				tolerance unless otherwise specified		CUSTOMER COPY		
rev.	ecn	no.	dr	date	linear			
E					± 0.30	projection 	title CARDBUS EJ HEADER SMT, TYPE 1/2/3	code TWN
					angles			
					dr WENDY CHEN06/22/98	unit	product family PCMCIA	sheet 2 OF
					enr JOSEPH HSIA06/22/98	mm/inch		
					chr JOSEPH HSIA06/22/98	scale	size A3	61555
					appd JENN TSAO06/22/98	1:1		
sheet	revision							
index	sheet							

PDM: Rev:F

STATUS Released

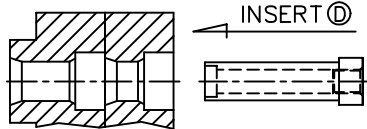
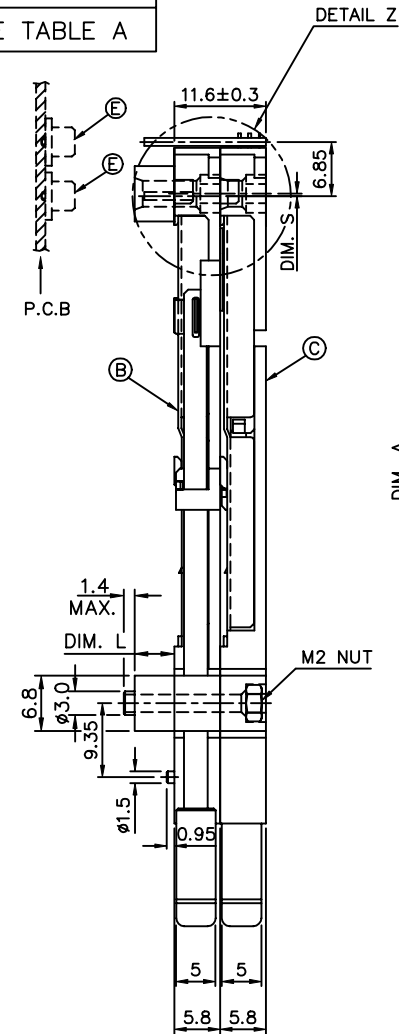
Printed: Oct 12, 2010

Tous droits strictement réservés. Reproduction ou communication à des tiers sans autorisation écrite du propriétaire. Droits de reproduction BERG ELECTRONICS.

BERG ELECTRONICS

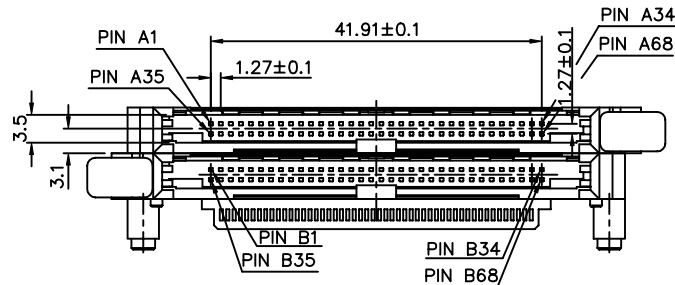
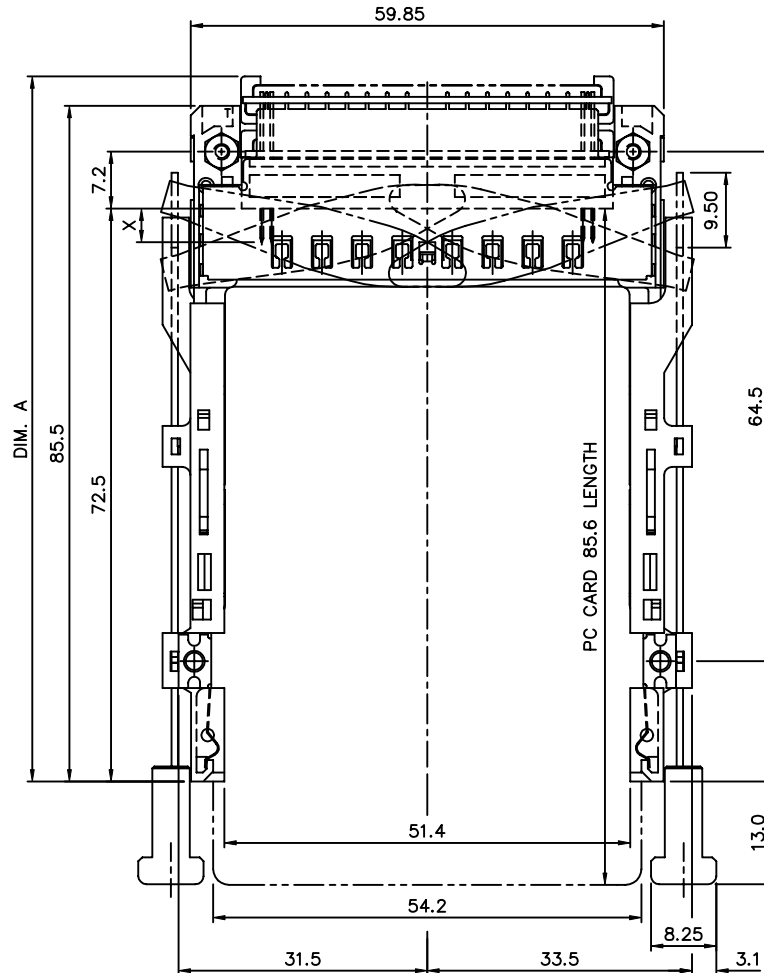
All rights strictly reserved. Reproduction or issue to third parties in any form without written authority from the proprietor. Copyright BERG ELECTRONICS.

PRODUCT NO.  
SEE TABLE A



THREADED INSERT CAN BE ASSEMBLED BY BERG OR BY CUSTOMER

DETAIL Z

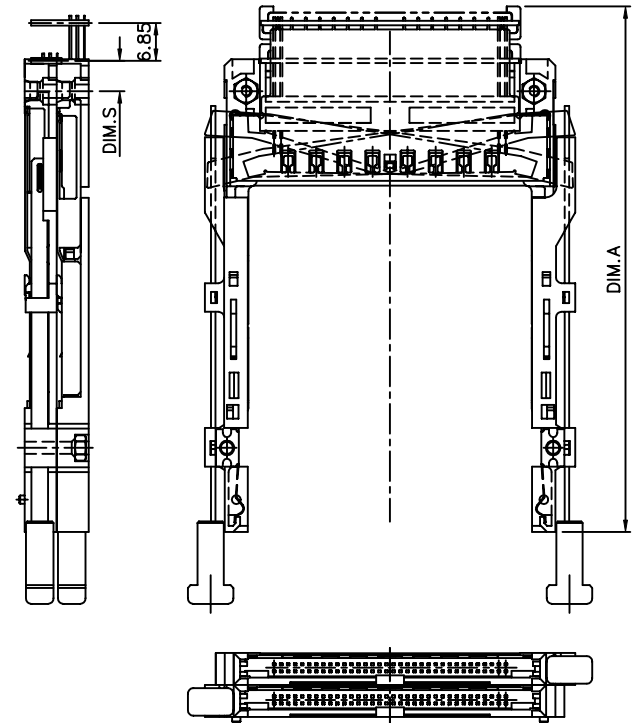


P/N: 61555-0\*\*CA

(ABOVE P.C.B/LAYOUT SEE TA-1050)

TABLE A

① PRODUCT NO.	STAND-OFF(DIM. L)	DIM. S	DIM. A
61555-050CA	5.0 mm	-0.3	89.25
-043CA	4.3 mm	-0.3	89.25
-040CA	4.0 mm	-0.3	89.25
-022CA	2.2 mm	1.0	90.55
-020CA	2.0 mm	1.0	90.55
-000CA	NONE	5.5	95.05



P/N: 61555-000CA

(ABOVE P.C.B/LAYOUT SEE TA-1050)

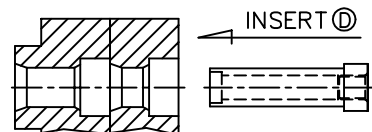
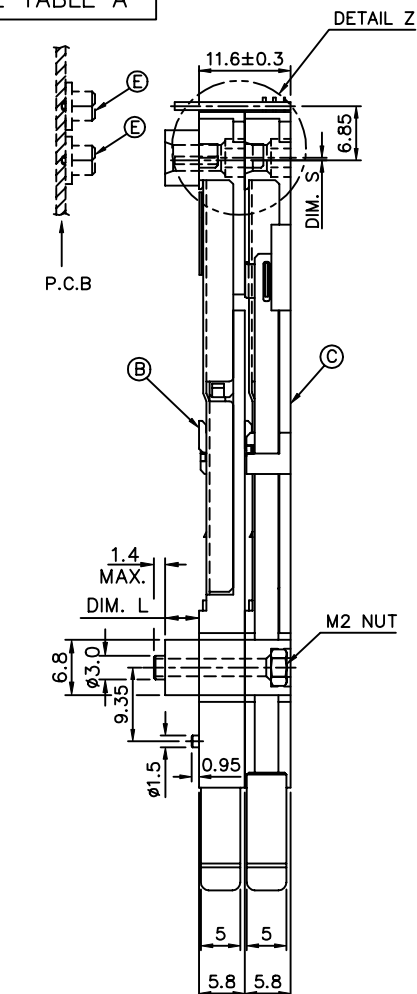
mat'l code		tolerance unless otherwise specified		CUSTOMER COPY		BERG ELECTRONICS	
rev.	ecn no.	dr	date	linear	± 0.30	projection	title
E				angles	± 2°	⊕	CARDBUS EJ HEADER SMT, TYPE 1/2/3
				dr	WENDY CHEN07/25/96	unit	product family
				enr	JOSEPH HSIA07/25/96	mm/inch	PCMCIA
				chr	JOSEPH HSIA07/25/96	scale	size
				appd	JENN TSAO07/25/96	1:1	dwg no.
sheet	revision						61555
index	sheet						code
							TWN
							sheet
							3 OF

SEE TABLE A

Tous droits strictement réservés. Reproduction ou communication à des tiers interdite sans autorisation écrite du propriétaire de c BERG ELECTRONICS.

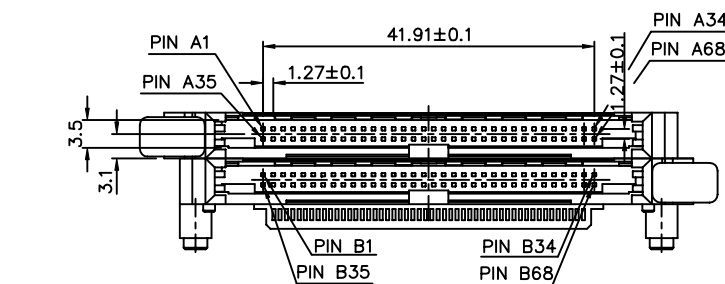
All rights reserved. Reproduction or issue to third parties in any form without the written permission of the copyright holder is prohibited. All rights reserved. Reproduction or issue to third parties in any form without the written permission of the copyright holder is prohibited.

D



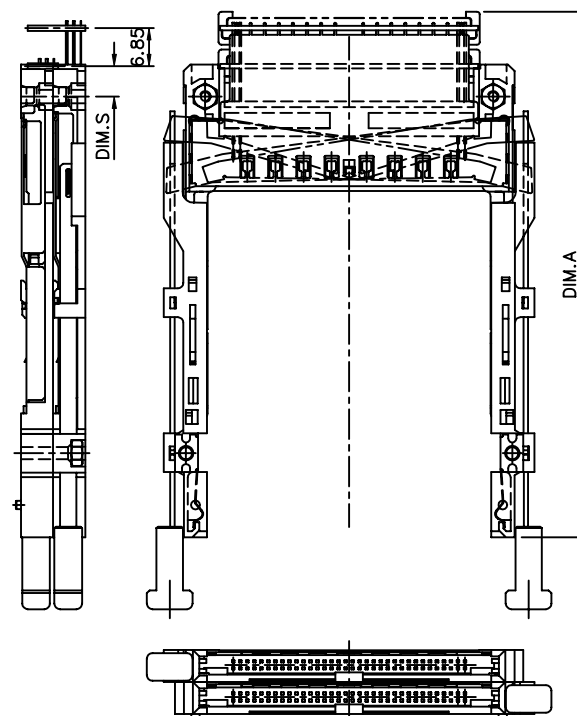
THREADED INSERT CAN BE  
ASSEMBLED BY BERG OR BY  
CUSTOMER

DETAIL Z



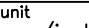


P/N: 61555-1\*\*CA  
(ABOVE P.C.B/LAYOUT SEE TA-1050)

Ⓐ PRODUCT NO.	STAND-OFF(DIM. L)	DIM. S	DIM. A
61555-150CA	5.0 mm	-0.3	89.25
-143CA	4.3 mm	-0.3	89.25
-140CA	4.0 mm	-0.3	89.25
-122CA	2.2 mm	1.0	90.55
-120CA	2.0 mm	1.0	90.55
-100CA	NONE	5.5	95.05



P/N: 61555-100CA  
(ABOVE P.C.B/LAYOUT SEE TA-1050)

mat'l code				tolerance unless otherwise specified		CUSTOMER COPY					
rev.	ecn	no.	dr	date	linear	± 0.30	projection 	title CARDBUS EJ HEADER SMT, TYPE 1/2/3			
E											
					angles	± 2°		product family PCMCIA size dwg no. 61555			code TWN sheet 4 OF
					dr	WENDY CHEN07/25/96					
					engr	JOSEPH HSIAO07/25/96					
					chr	JOSEPH HSIAO07/25/96					
					appd	JENN TSAO07/25/96					
sheet	revision										
index	sheet										

**PDM: Rev:F**

STATUS: <sup>5</sup>Released

Printed: Oct 12, 2010

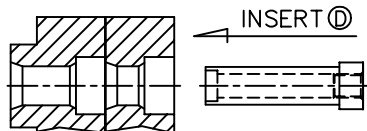
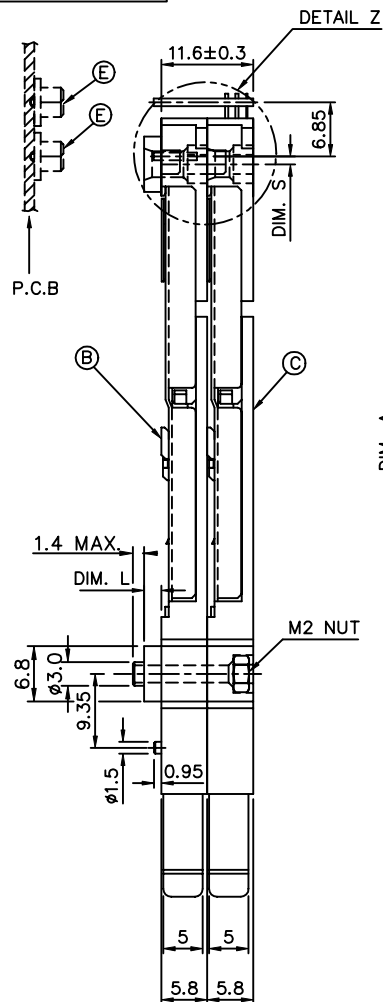
SEE TABLE A

Tous droits strictement reserves. Reproduction ou communication a des tiers int  
sous quelque forme que ce soit sans autorisation ecrite du proprietaire.  
propriete de c BERG ELECTRONICS.  
droits de reproduction BERG ELECTRONICS by A



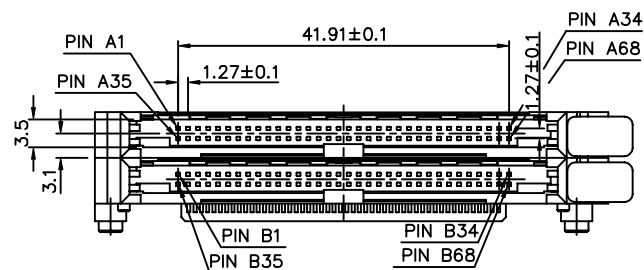
All rights reserved. Reproduction or issue to third parties in any form without the prior written permission of the copyright owner is prohibited. Reproduction or issue to third parties in any form without the prior written permission of the copyright owner is prohibited.

D



THREADED INSERT CAN BE  
ASSEMBLED BY BERG OR BY  
CUSTOMER

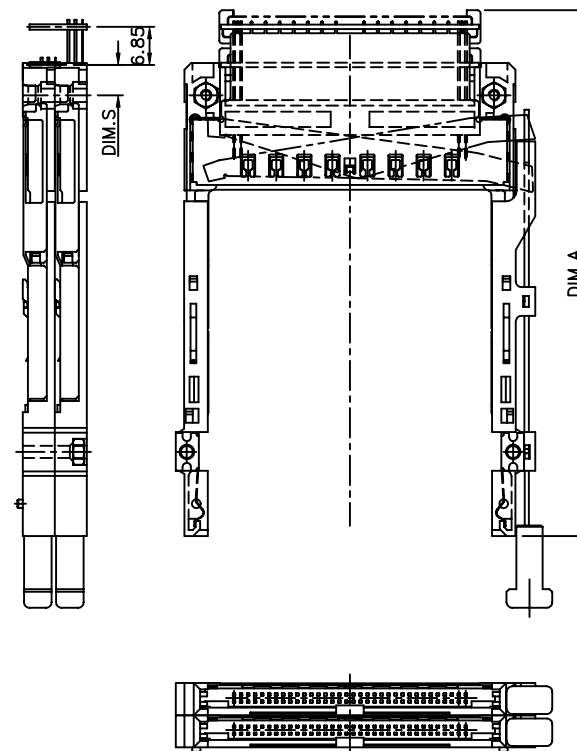
DETAIL Z




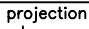

P/N : 61555-2\*\*CA  
(ABOVE P.C.B/LAYOUT SEE TA-1050)

TABLE A

Ⓐ PRODUCT NO.	STAND-OFF(DIM. L)	DIM. S	DIM. A
61555-250CA	5.0 mm	-0.3	89.25
-243CA	4.3 mm	-0.3	89.25
-240CA	4.0 mm	-0.3	89.25
-222CA	2.2 mm	1.0	90.55
-220CA	2.0 mm	1.0	90.55
-206CA	0.6 mm	5.5	95.05
-200CA	NONE	5.5	95.05



P/N : 61555-200CA  
(ABOVE P.C.B/LAYOUT SEE TA-1050)

mat'l code					tolerance unless otherwise specified		CUSTOMER COPY												
rev.	ecn	no.	dr	date	linear	± 0.30		projection 	title CARDBUS EJ HEADER SMT, TYPE 1/2/3										
E																			
					angles	± 2°			product family PCMCIA					code TWN					
				dr	WENDY CHEN D7/25/96														
				engr	JOSEPH HSIAO D7/25/96														
				chr	JOSEPH HSIAO D7/25/96														
				appd	JENN TSAO D7/25/96														
							unit	mm/inch		size					dwg no.		sheet		
							scale		1:1		A3					61555		5 OF	
sheet		revision																	
index		sheet																	

**PDM: Rev:F**

STATUS: **Released**

Printed: Oct 12, 2010

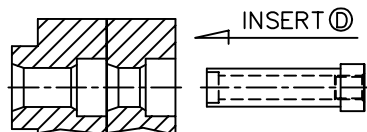
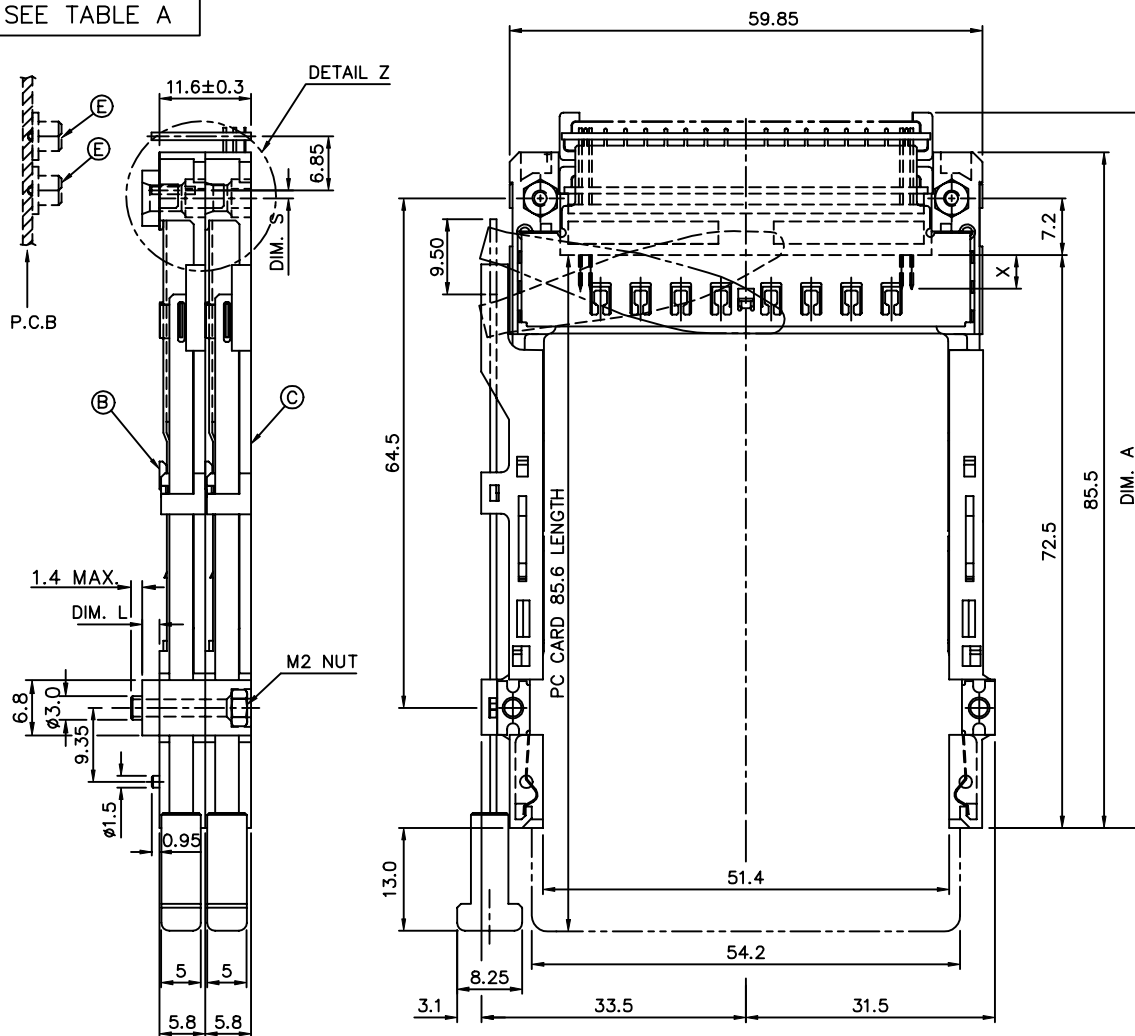
SEE TABLE A

Tous droits strictement reserves. Reproduction ou communication a des tiers int  
sous quelque forme que ce soit sans autorisation ecrite du proprietaire.  
propriete de c BERG ELECTRONICS.  
droits de reproduction BERG ELECTRONICS by A



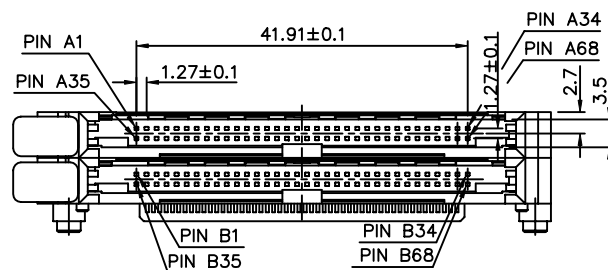
All rights reserved. Reproduction or issue to third parties in any form without the prior written permission of the proprietor is prohibited.  
Copyright © 1994 by BERG ELECTRONICS.

D



THREADED INSERT CAN BE  
ASSEMBLED BY BERG OR BY  
CUSTOMER

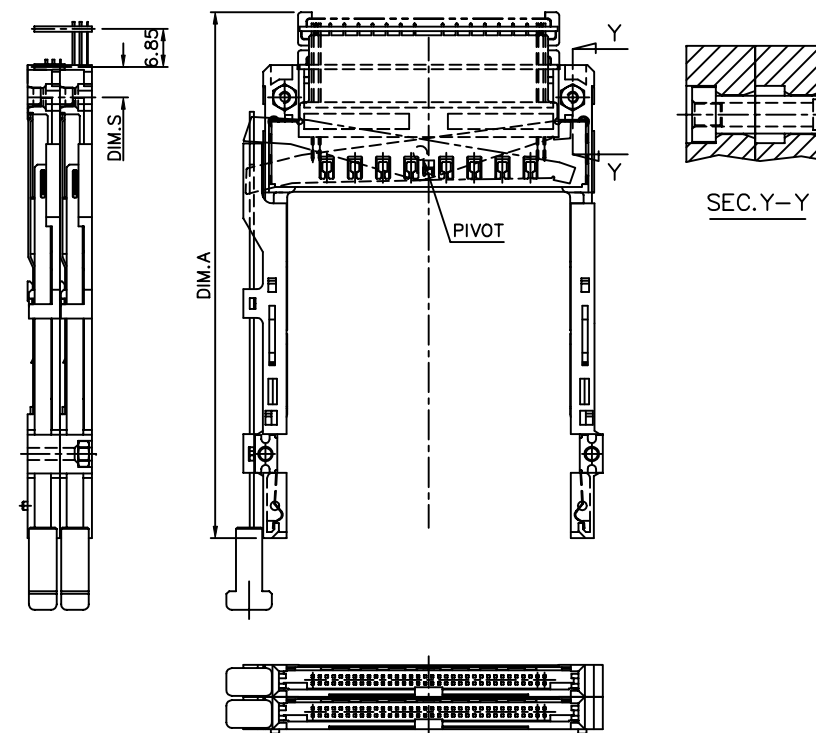
DETAIL Z




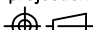
P/N : 61555-3\*\*CA  
(ABOVE P.C.B/LAYOUT SEE TA-1050)

TABLE A

Ⓐ PRODUCT NO.	STAND-OFF(DIM. L)	DIM. S	DIM. A
61555-350CA	5.0 mm	-0.3	89.25
-343CA	4.3 mm	-0.3	89.25
-340CA	4.0 mm	-0.3	89.25
-322CA	2.2 mm	1.0	90.55
-320CA	2.0 mm	1.0	90.55
-300CA	NONE	5.5	95.05



P/N : 61555-300CA  
(ABOVE P.C.B/LAYOUT SEE TA-1050)

mat'l code					tolerance unless otherwise specified		CUSTOMER COPY						
rev.	ecn	no.	dr	date	linear	± 0.30		projection 	title	CARDBUS EJ HEADER SMT, TYPE 1/2/3			
E				± 2°									
				angles									
					dr	WENDY CHEN	07/25/96	unit	product family			PCMCIA	code
					engr	JOSEPH HSIAD	07/25/96	mm/inch	size			dwg no.	TWN
					chr	JOSEPH HSIAD	07/25/96	scale	A3			61555	sheet
					appd	JENN TSAO	07/25/96	1:1					6 OF
sheet	revision												
index	sheet												

**PDM: Rev:F**

STATUS: <sup>5</sup>Released

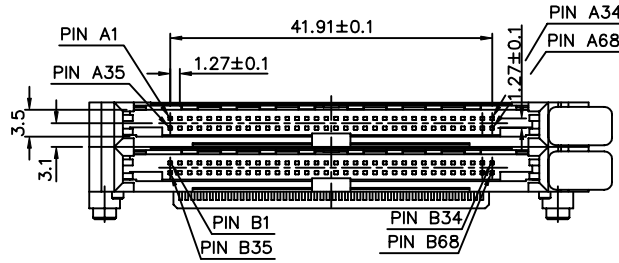
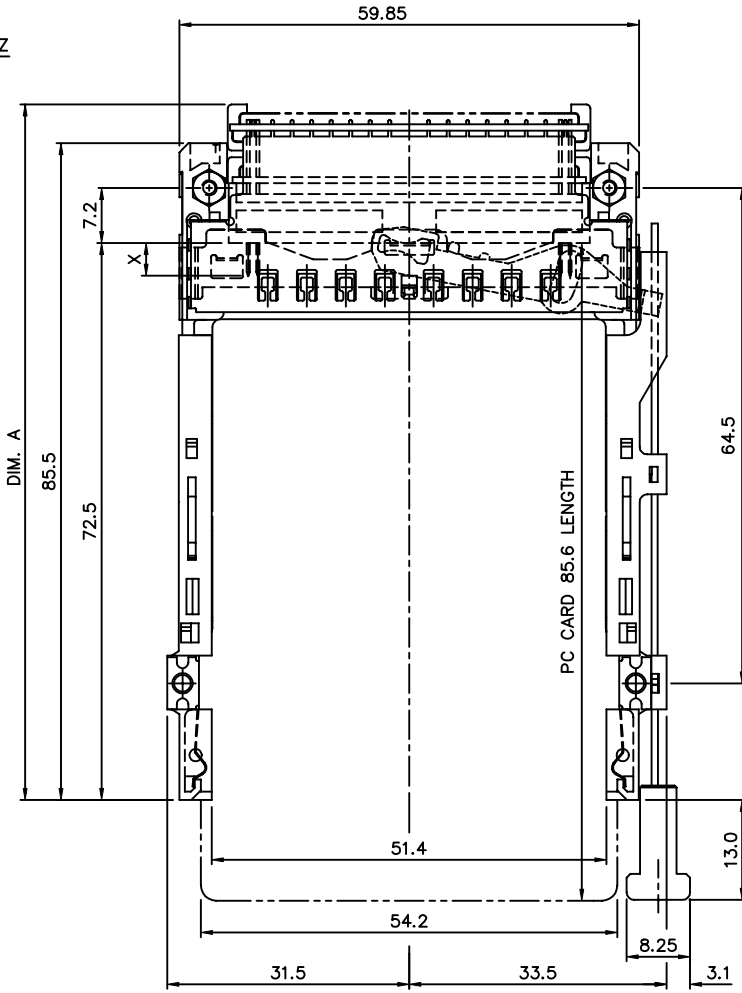
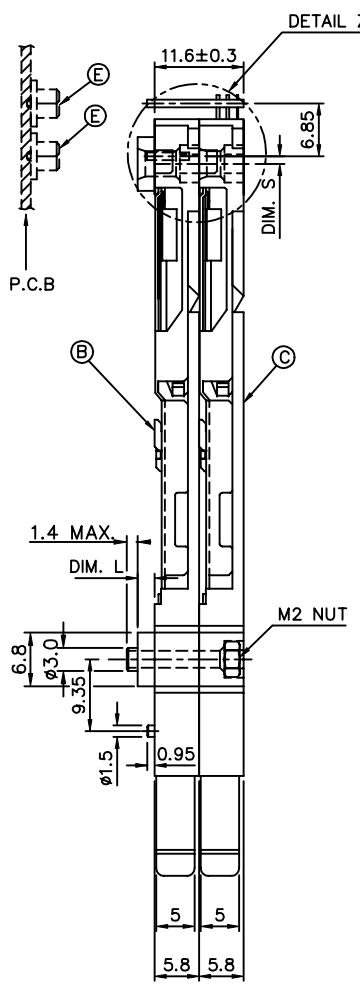
Printed: Oct 12, 2010

Tous droits strictement réservés. Reproduction ou communication à des tiers sans autorisation écrite du propriétaire.  
All rights strictly reserved. Reproduction or issue to third parties in any form without written authority from the proprietor.  
Copyright © 2010 FCI Electronics Inc. All rights reserved.



All rights strictly reserved. Reproduction or issue to third parties in any form without written authority from the proprietor.  
Copyright © 2010 FCI Electronics Inc. All rights reserved.

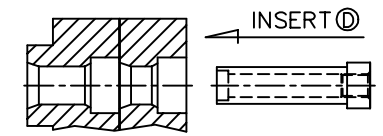
PRODUCT NO.  
SEE TABLE A



P/N : 61555-2\*\*CAS  
(ABOVE P.C.B./LAYOUT SEE TA-1050)

TABLE A

① PRODUCT NO.	STAND-OFF(DIM. L)	DIM. S	DIM. A
61555-250CAS	5.0 mm	-0.3	89.25
-243CAS	4.3 mm	-0.3	89.25
-240CAS	4.0 mm	-0.3	89.25
-222CAS	2.2 mm	1.0	90.55
-220CAS	2.0 mm	1.0	90.55
-206CAS	0.6 mm	5.5	95.05
-200CAS	NONE	5.5	95.05



THREADED INSERT CAN BE  
ASSEMBLED BY BERG OR BY  
CUSTOMER

DETAIL Z

mat'l code				tolerance unless otherwise specified		CUSTOMER COPY		FCI ELECTRONICS	
rev.	ecn	no.	dr	date	linear	± 0.30	projection	title	
F						± 2°		CARDBUS EJ HEADER SMT, TYPE 1/2/3	
					angles			product family : PCMCIA	
					dr	WENDY CHEN 06/22/98	unit	code	
					enr	JOSEPH HSIA 06/22/98	mm/inch	TWN	
					chr	JOSEPH HSIA 06/22/98	scale	sheet	
					appd	JENN TSAO 06/22/98		7 OF	
sheet	revision							size	
index	sheet							A3	
								dwg no.	
								61555	



Tous droits strictement réservés. Reproduction ou communication à des tiers sans autorisation écrite du propriétaire.  
All rights strictly reserved. Reproduction or issue to third parties in any form without written authority from the proprietor.  
Copyright © BERG ELECTRONICS BV

All rights strictly reserved. Reproduction or issue to third parties in any form without written authority from the proprietor.  
Copyright © BERG ELECTRONICS BV

PRODUCT NO.  
SEE TABLE A

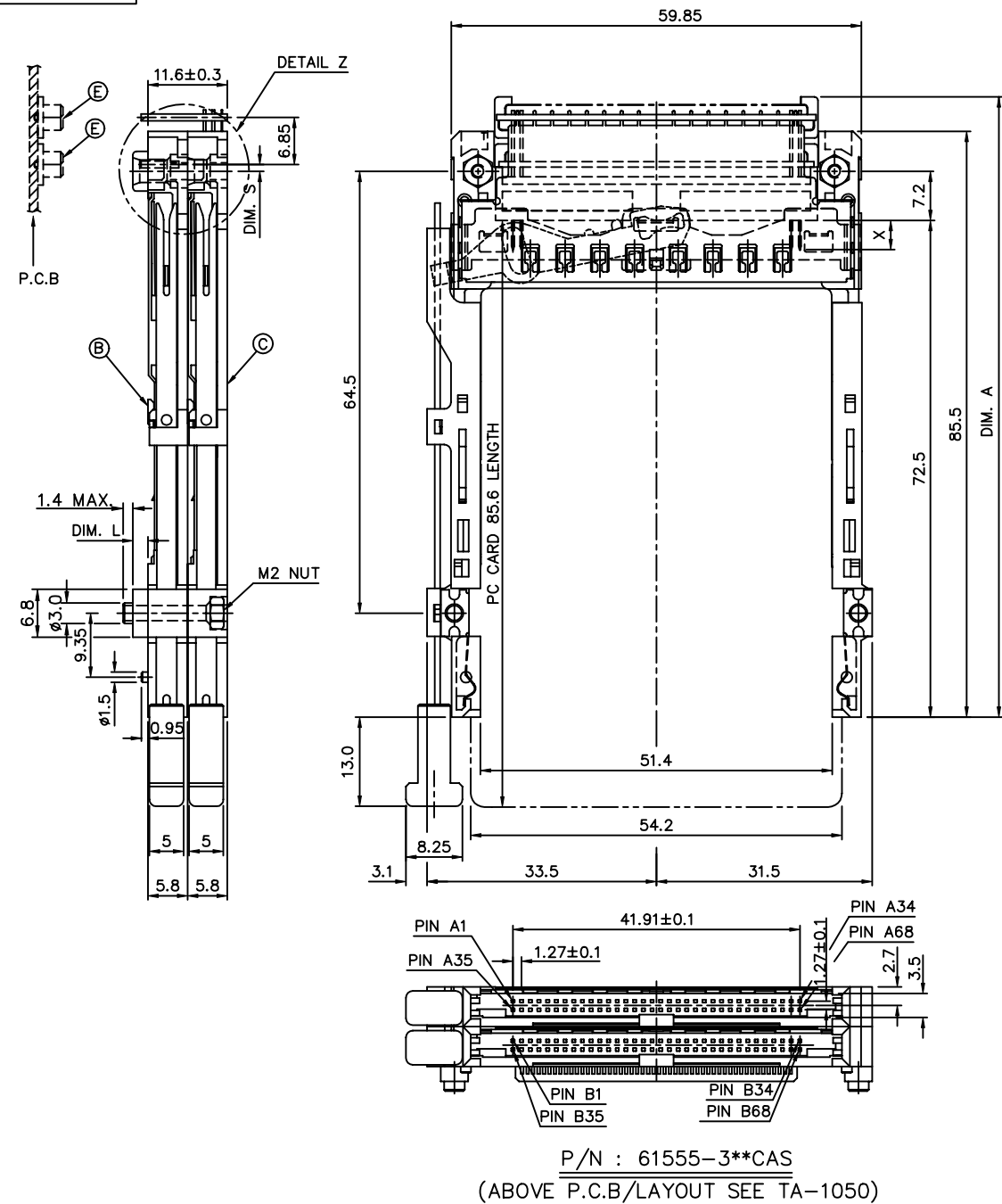
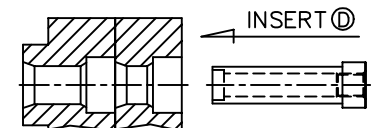


TABLE A

① PRODUCT NO.	STAND-OFF(DIM. L)	DIM. S	DIM. A
61555-350CAS	5.0 mm	-0.3	89.25
-343CAS	4.3 mm	-0.3	89.25
-340CAS	4.0 mm	-0.3	89.25
-322CAS	2.2 mm	1.0	90.55
-320CAS	2.0 mm	1.0	90.55
-300CAS	NONE	5.5	95.05



THREADED INSERT CAN BE ASSEMBLED BY BERG OR BY CUSTOMER

DETAIL Z

mat'l code				tolerance unless otherwise specified		CUSTOMER COPY		FCI ELECTRONICS	
rev.	ecn	no.	dr	date	linear	± 0.30	projection	title CARDBUS EJ HEADER SMT, TYPE 1/2/3	
F					angles	± 2°	⊕	product family : PCMCIA	
					dr	WENDY CHEN 06/22/98	unit	code	
					enr	JOSEPH HSIA 06/22/98	mm/inch	TWN	
					chr	JOSEPH HSIA 06/22/98	scale	sheet	
					appd	JENN TSAO 06/22/98	A3	8 of	
sheet	revision								
index	sheet								



## PART NUMBER DESCRIPTION :

61555-□□□□□

CARDBUS TYPE  
S: FORCE-SAVINGBUTTON COLOR  
A : BLACK

C : 13.0 mm

STAND-OFF

00 : 0.0 mm  
06 : 0.6 mm  
20 : 2.0 mm  
22 : 2.2 mm  
40 : 4.0 mm  
43 : 4.3 mm  
50 : 5.0 mm

PUSH ROD

TOP MOUNT	BOTTOM MOUNT
0 : RIGHT-LEFT	5 : RIGHT-LEFT
1 : LEFT-RIGHT	6 : LEFT-RIGHT
2 : RIGHT-RIGHT	7 : RIGHT-RIGHT
3 : LEFT-LEFT	8 : LEFT-LEFT

## NOTES:

- 8.0mm MIN CARD EJECT.
- EJECT TRAVEL: 9.50mm
- MATERIAL:
  - EJECT HEADER ASS'Y  
PLASTIC HOUSING: LCP UL94V-0 BLACK  
PIN: PHOSPHOR BRONZE  
PCB: FR4  
PLASTIC GUIDE: POLYPHTHARAMID UL94V-0 BLACK  
PLATE: STAINLESS  
EMI CONTACT: PHOSPHOR BRONZE
  - RECEPTACLE  
PLASTIC: LCP 94V-0 NATURAL  
PIN: BeCu
- FINISH  
PIN :  
UNDER PLATING: 0.5um MIN. Ni  
CONTACT AREA: 0.1um MIN. GOLD OVER  
0.5um MIN. Pd-Ni  
SOLDER TAIL: 2.5um MIN. Sn-Pb  
GROUND SHIELD :  
UNDER PLATING: 0.75um MIN. Ni  
CONTACT SURFACE: 0.03um GOLD MIN. OVER  
PdNi 0.5um MIN.(GOLD FLASH DOUBLE SIDES)  
OR, 0.38um GOLD(ONE SIDE ONLY)
- PUSH ROD LOCATION AND P.C.B. ARE AS APPEARS INSTALLED
- DIM "X"

4.25±0.1	3.5±0.1	5.0±0.1
OTHERS	36,67	1,17,34,35,51,68
- DO NOT TOUCH AND KEEP CLEAN THE SURFACES OF PCB OF HEADER ASS'Y.
- P.C.B LAYOUT AND PIN ASSIGNMENT REFERED TO PART NUMBER TA-1050.

mat'l code				tolerance unless otherwise specified		CUSTOMER COPY		BERG ELECTRONICS	
rev.	ecn	no.	dr	date	linear	±0.30	projection	title CARDBUS EJ HEADER SMT, TYPE 1/2/3	
E					angles	± 2°			
					dr	WENDY CHEN 07/25/96	unit	product family	code
					enr	JOSEPH HSIA 07/25/96	mm/inch	PCMCIA	TWN
					chr	JOSEPH HSIA 07/25/96	scale	size	sheet
					appd	JENN TSAO 07/25/96	1:1	dwg no.	9 OF
sheet	revision							61555	
index	sheet								