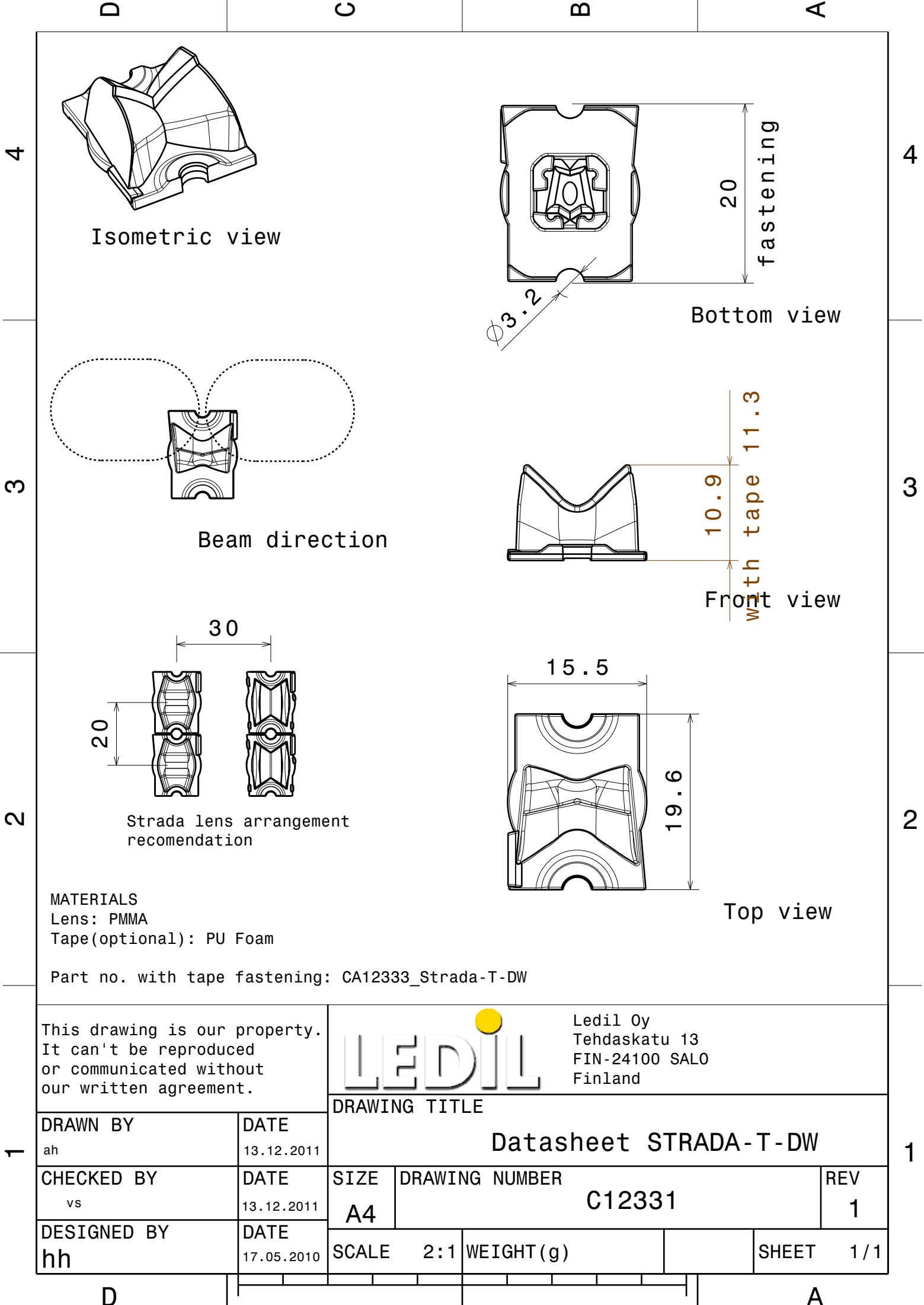




Ordering number	CA12333		
Description	1		
Family	Strada-T	FWHM	(simulated) Asym
Type	Assembly	Efficiency	(simulated) 89 %
LED	3J (GSPW16)	cd/Im	(simulated) 0.000
Color	Clear	Gerber File	Available
Diameter	19.6 x 15.5 mm		
Height	11.3 mm		
Style	Rectang		
Optic Material	PMMA		
Holder Material	-		
Fastening	-		
Status	On production		

NOTE: The typical divergence will be changed by different color, chip size and chip position tolerance. The typical total divergence is the full angle measured where the luminous intensity is half of the peak value.



Isometric view

Bottom view

Beam direction


Front view

Strada lens arrangement
recomendation

Top view

MATERIALS
Lens: PMMA
Tape(optional): PU Foam

Part no. with tape fastening: CA12333_Strada-T-DW

This drawing is our property. It can't be reproduced or communicated without our written agreement.		<div></div> <div>Ledil Oy Tehdaskatu 13 FIN-24100 SALO Finland</div>	
		DRAWING TITLE	
DRAWN BY ah	DATE 13.12.2011	Datasheet STRADA-T-DW	
CHECKED BY vs	DATE 13.12.2011	SIZE A4	DRAWING NUMBER C12331
DESIGNED BY hh	DATE 17.05.2010	SCALE 2 : 1	WEIGHT (g)
		SHEET	1 / 1