



FCIconnect.com

Copyright FCI

List of "SFV__R-3/4STAE1LF" customer document

DOCUMENT NO.	LIST
SC-SFV07	SPEC.
JSA96799	CAT.NO.TABLE FOR 0.5mm CONTACT SPACING CONNECTOR (SFV__R-3/4STA_LF)
JSA96800	CONNECTOR USED FOR FPC WITH 0.5mm CONTACT SPACING (SFV__R-3STA_LF)
JSA96801	CONNECTOR USED FOR FPC WITH 0.5mm CONTACT SPACING (SFV__R-4STA_LF)
JSA96802	CAT.NO.TABLE FOR PLASTIC TAPE PACKAGED 0.5mm CONTACT SPACING CONNECTOR (SFV__R-3/4STAE1LF)
JSA96803	PLASTIC TAPE PACKAGED 0.5mm CONTACT SPACING CONNECTOR (SFV__R-3STAE1LF)
JSA96804	PLASTIC TAPE PACKAGED 0.5mm CONTACT SPACING CONNECTOR (SFV__R-4STAE1LF)
JSA96191	RECOMMENDED CABLE (FPC) (SFV__R-3/4ST_LF)
BJM-SFV102	HANDLING PROCEDURES

mat'l. code				surface ISO 1302 <input checked="" type="checkbox"/>		tolerance ISO 406 ISO 1101		projection 		product family 58EF											
ltr		ecn no		dr		date		tolerances unless otherwise specified				title 0.5mm SPACING FPC CONNECTOR DOCUMENT LIST (Cat. No. : SFV__R-3/4STAE1LF)									
A		J05-0703		H.T		'05/10/19		angles		linear		scale X									
B		J06-0372		H.T		'06/9/17		dr		engr		chr						appd			
sheet index		revision sheet		B		1										dwg no JSA 96798		sheet 1 of 1		size A4	
																type Product Customer Drawing				Rev. B	

form: A4

CAT. NO. & DIMENSIONS

NO. OF CONTACTS (n)	CAT. NO.	DIMENSIONS (NOTE2)			
		A ± 0.2	B ± 0.2	C ± 0.1	D ± 0.1
4	SFV 4R-3/4STA__LF	7.5	5.9	15	16
5	SFV 5R-3/4STA__LF	8.0	6.4	2.0	2.1
6	SFV 6R-3/4STA__LF	8.5	6.9	2.5	2.6
7	SFV 7R-3/4STA__LF	9.0	7.4	3.0	3.1
8	SFV 8R-3/4STA__LF	9.5	7.9	3.5	3.6
9	SFV 9R-3/4STA__LF	10.0	8.4	4.0	4.1
10	SFV10R-3/4STA__LF	10.5	8.9	4.5	4.6
11	SFV11R-3/4STA__LF	11.0	9.4	5.0	5.1
12	SFV12R-3/4STA__LF	11.5	9.9	5.5	5.6
13	SFV13R-3/4STA__LF	12.0	10.4	6.0	6.1
14	SFV14R-3/4STA__LF	12.5	10.9	6.5	6.6
15	SFV15R-3/4STA__LF	13.0	11.4	7.0	7.1
16	SFV16R-3/4STA__LF	13.5	11.9	7.5	7.6
17	SFV17R-3/4STA__LF	14.0	12.4	8.0	8.1
18	SFV18R-3/4STA__LF	14.5	12.9	8.5	8.6
19	SFV19R-3/4STA__LF	15.0	13.4	9.0	9.1
20	SFV20R-3/4STA__LF	15.5	13.9	9.5	9.6
21	SFV21R-3/4STA__LF	16.0	14.4	10.0	10.1
22	SFV22R-3/4STA__LF	16.5	14.9	10.5	10.6
23	SFV23R-3/4STA__LF	17.0	15.4	11.0	11.1
24	SFV24R-3/4STA__LF	17.5	15.9	11.5	11.6
25	SFV25R-3/4STA__LF	18.0	16.4	12.0	12.1
26	SFV26R-3/4STA__LF	18.5	16.9	12.5	12.6
27	SFV27R-3/4STA__LF	19.0	17.4	13.0	13.1
28	SFV28R-3/4STA__LF	19.5	17.9	13.5	13.6
29	SFV29R-3/4STA__LF	20.0	18.4	14.0	14.1
30	SFV30R-3/4STA__LF	20.5	18.9	14.5	14.6
31	SFV31R-3/4STA__LF	21.0	19.4	15.0	15.1
32	SFV32R-3/4STA__LF	21.5	19.9	15.5	15.6
33	SFV33R-3/4STA__LF	22.0	20.4	16.0	16.1
34	SFV34R-3/4STA__LF	22.5	20.9	16.5	16.6
35	SFV35R-3/4STA__LF	23.0	21.4	17.0	17.1

CAT. NO.

SFV (n) R - 3 ST A -- LF

SERIES NAME

NO. OF CONTACTS

RIGHT ANGLE TYPE

FOR FPC,
WITH CABLE LOCK MECHANISM

CONTACT DIRECTION

3: LOWER CONTACT TYPE

4: UPPER CONTACT TYPE

FOR AUTOMATIC MOUNTING
(SMT)

PLATING VARIATION

PACKAGE STYLE

LEAD FREE

NOTES

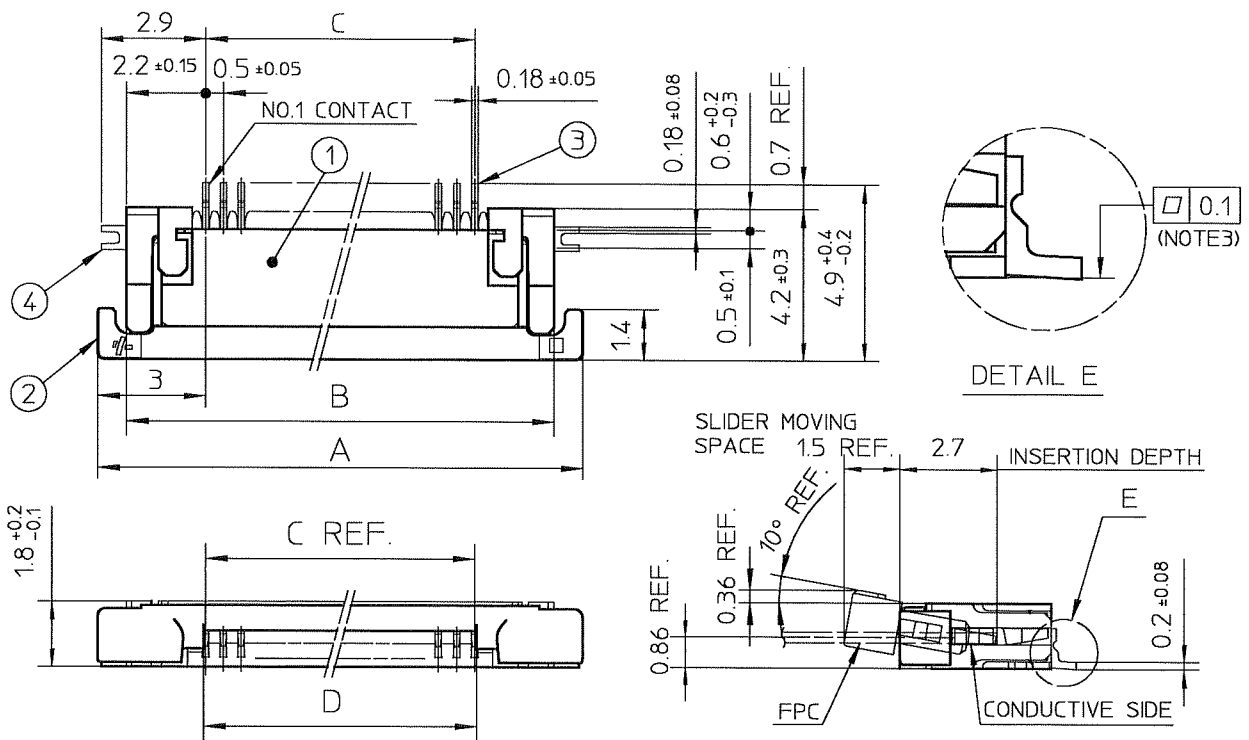
- THIS PRODUCT IS THE CONNECTOR USED FOR FPC AND COPES WITH AUTOMATIC MOUNTING (SMT).
- SEE PART DRAWINGS FOR DIMENSIONS A-D.
- THIS PRODUCT IS THE CONNECTOR WITH CABLE LOCK MECHANISM.

mat'l. code				surface ISO 1302 ✓		tolerance ISO 406 ISO 1101		projection 		product family 58EF			
ltr	ecn no	dr	date	tolerances unless otherwise specified						title CAT. NO. TABLE FOR 0.5 mm CONTACT SPACING CONNECTOR (Cat. No. : SFV__R-3/4STA__LF)			
A	J05-0703	H.T	'05/10/19	angles		linear		scale X					
B	J06-0372	H.T	'06/9/7							dwg no JSA 96799			
										sheet 1 of 1 size A4			
										type Product Customer Drawing			
sheet index	revision	B								Rev. B			
	sheet	1											

SC-SFV07 JSA96800, 96801, 96802, 96191
form: A4

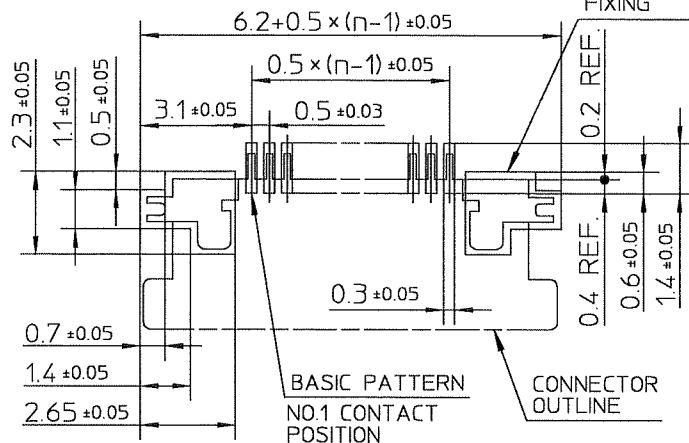
1

2



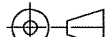






PT. NO.	PARTS NAME	MATERIAL	Q'TY	NOTE
1	HOUSING	POLYAMIDE RESIN GLASS REINFORCED (UL94V-0)	1	COLOR : BLACK
2	SLIDER	PPS RESIN GLASS REINFORCED (UL94V-0)	1	COLOR : BLACK
3	CONTACT	PHOSPHOR BRONZE	n	PLATING : CONTACT AREA GOLD TERMINAL AREA TIN
4	MOUNTING PLATE		2	PLATING : LEAD FREE

n : NO. OF CONTACTS

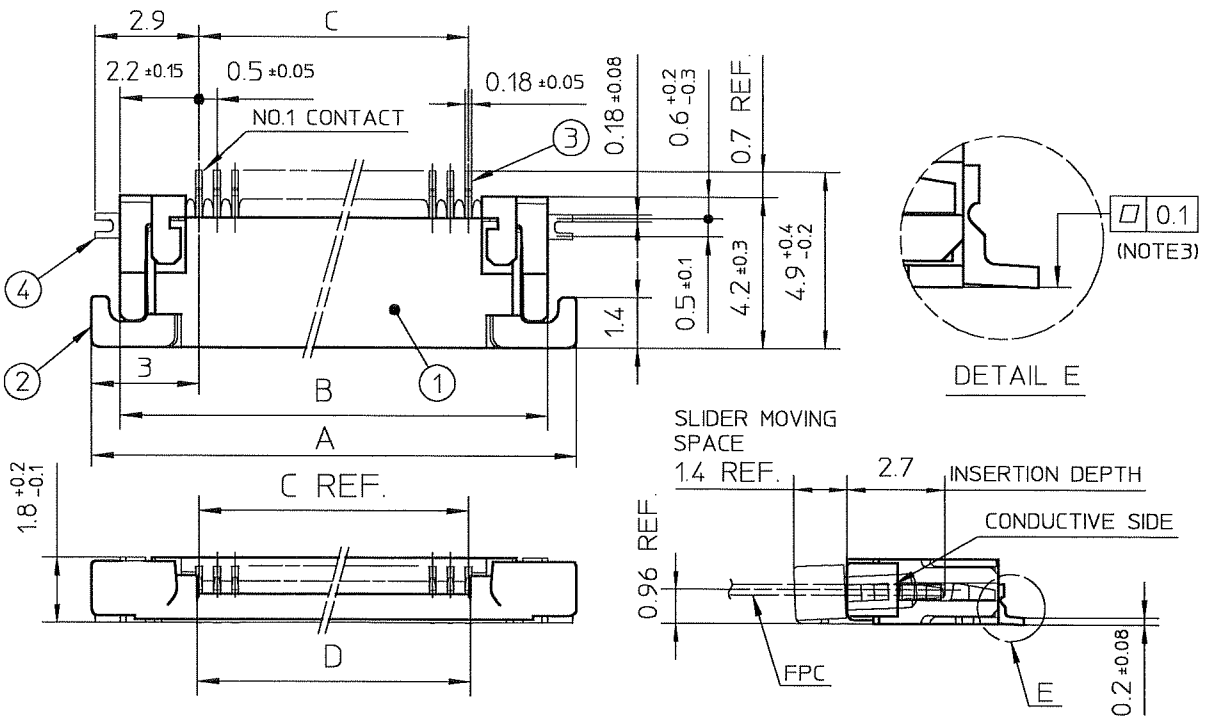
RECOMMENDED PC BOARD LAYOUT
(COMPONENT SIDE)PATTERN FOR
MOUNTING PLATE
FIXING

NOTES

- THIS PRODUCT IS THE CONNECTOR USED FOR FPC AND COPS WITH AUTOMATIC MOUNTING (SMT).
- THIS PRODUCT IS LOWER CONTACT TYPE CONNECTOR WITH CABLE LOCK MECHANISM.
- FLATNESS OF CONTACT TERMINAL AND MOUNTING PLATE MUST BE WITHIN TOLERANCE IN E PORTION DETAILED DRAWING.
- THIS PRODUCT MEETS EUROPEAN UNION DIRECTIVES AND OTHER COUNTRY REGULATIONS AS DESCRIBED IN GS-22-008.
- THE HOUSING WILL WITHSTAND EXPOSURE TO 260°C PEAK TEMPERATURE FOR 10 SECONDS IN A REFLOW SOLDERING OVEN.

mat'l. code				surface ISO 1302 ✓		tolerance ISO 406 ISO 1101		projection 		product family 58EF											
ltr	ecn no	dr	date	tolerances unless otherwise specified							title CONNECTOR USED FOR FPC WITH 0.5 mm CONTACT SPACING (Cat. No. : SFV__R-3STA__LF)										
A	J05-0703	H.T	'05/10/19	angles	linear	±0.2															
B	J06-0064	H.T	'06/2/23																		
C	J06-0372	H.T	'06/9/7																		
				dr			9/7/06			dwg no						sheet 1 of 1		size			
				enr			9/7/06			JSA 96800								A ₄			
				chr			9/8/06														
				appd			9/14/06														
sheet index		revision		C														Rev. C			
		sheet		1																	

SC-SFV07 JSA96799
form: A4

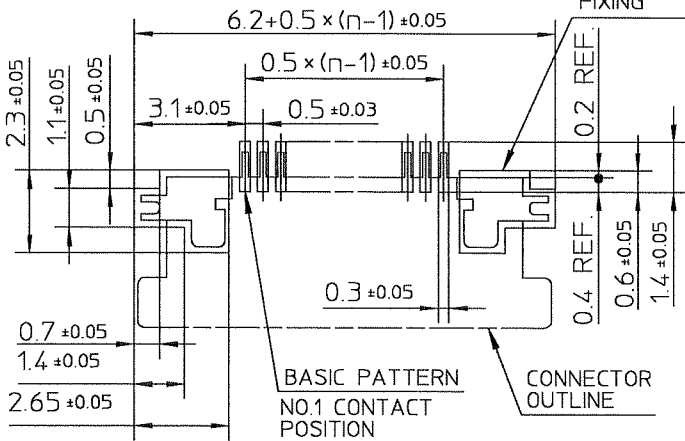


PT. NO.	PARTS NAME	MATERIAL	Q'TY	NOTE
1	HOUSING	POLYAMIDE RESIN GLASS REINFORCED (UL94V-0)	1	COLOR : BLACK
2	SLIDER	PPS RESIN GLASS REINFORCED (UL94V-0)	1	COLOR : BLACK
3	CONTACT	PHOSPHOR BRONZE	n	PLATING : CONTACT AREA GOLD TERMINAL AREA TIN
4	MOUNTING PLATE		2	PLATING : LEAD FREE

RECOMMENDED PC BOARD LAYOUT
(COMPONENT SIDE)

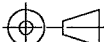
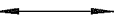

PATTERN FOR
MOUNTING PLATE
FIXING

n : NO. OF CONTACTS



NOTES

1. THIS PRODUCT IS THE CONNECTOR USED FOR FPC AND COPS WITH AUTOMATIC MOUNTING (SMT).
2. THIS PRODUCT IS UPPER CONTACT TYPE CONNECTOR WITH CABLE LOCK MECHANISM.
3. FLATNESS OF CONTACT TERMINAL AND MOUNTING PLATE MUST BE WITHIN TOLERANCE IN E PORTION DETAILED DRAWING.
4. THIS PRODUCT MEETS EUROPEAN UNION DIRECTIVES AND OTHER COUNTRY REGULATIONS AS DESCRIBED IN GS-22-008.
5. THE HOUSING WILL WITHSTAND EXPOSURE TO 260°C PEAK TEMPERATURE FOR 10 SECONDS IN A REFLOW SOLDERING OVEN.

mat'l. code				surface ISO 1302 ✓		tolerance ISO 406 ISO 1101		projection 		product family 58EF											
ltr	ecn no	dr	date	tolerances unless otherwise specified							title CONNECTOR USED FOR FPC WITH 0.5 mm CONTACT SPACING (Cat. No. : SFV__R-4STA__LF)										
A	J05-0703	H.T	'05/10/19	angles	linear	±0.2															
B	J06-0064	H.T	'06/2/23																		
C	J06-0372	H.T	'06/9/7							scale	ℕ										
				dr	<i>H. Shrivastava</i>		9/7/06			dwg no						sheet 1 of 1		size			
				enr	<i>H. Shrivastava</i>		9/7/06			JSA 96801								A4			
				chr	<i>K. Shrivastava</i>		9/8/06														
				appd	<i>Siddharth</i>		9/6/06														
sheet index		revision sheet		C 1														Rev. C			

SC-SFV07 JSA96799
form: A4

CAT. NO. & DIMENSIONS

NO. OF CONTACTS (n)	CAT. NO.	DIMENSIONS (NOTE3)		
		F ± 5	G ± 0.3	H ± 0.1
4	SFV 4R-3/4STAE1LF	20.4	16	—
5	SFV 5R-3/4STAE1LF	20.4	16	—
6	SFV 6R-3/4STAE1LF	20.4	16	—
7	SFV 7R-3/4STAE1LF	28.4	24	—
8	SFV 8R-3/4STAE1LF	28.4	24	—
9	SFV 9R-3/4STAE1LF	28.4	24	—
10	SFV10R-3/4STAE1LF	28.4	24	—
11	SFV11R-3/4STAE1LF	28.4	24	—
12	SFV12R-3/4STAE1LF	28.4	24	—
13	SFV13R-3/4STAE1LF	28.4	24	—
14	SFV14R-3/4STAE1LF	28.4	24	—
15	SFV15R-3/4STAE1LF	28.4	24	—
16	SFV16R-3/4STAE1LF	28.4	24	—
17	SFV17R-3/4STAE1LF	28.4	24	—
18	SFV18R-3/4STAE1LF	28.4	24	—
19	SFV19R-3/4STAE1LF	28.4	24	—
20	SFV20R-3/4STAE1LF	28.4	24	—
21	SFV21R-3/4STAE1LF	28.4	24	—
22	SFV22R-3/4STAE1LF	28.4	24	—
23	SFV23R-3/4STAE1LF	36.4	32	28.4
24	SFV24R-3/4STAE1LF	36.4	32	28.4
25	SFV25R-3/4STAE1LF	36.4	32	28.4
26	SFV26R-3/4STAE1LF	36.4	32	28.4
27	SFV27R-3/4STAE1LF	36.4	32	28.4
28	SFV28R-3/4STAE1LF	36.4	32	28.4
29	SFV29R-3/4STAE1LF	36.4	32	28.4
30	SFV30R-3/4STAE1LF	36.4	32	28.4
31	SFV31R-3/4STAE1LF	48.4	44	40.4
32	SFV32R-3/4STAE1LF	48.4	44	40.4
33	SFV33R-3/4STAE1LF	48.4	44	40.4
34	SFV34R-3/4STAE1LF	48.4	44	40.4
35	SFV35R-3/4STAE1LF	48.4	44	40.4

CAT. NO. SFV (n) R - 3 ST A E1 LF

SERIES NAME

NO. OF CONTACTS

RIGHT ANGLE TYPE

FOR FPC,
WITH CABLE LOCK MECHANISM

CONTACT DIRECTION
3: LOWER CONTACT TYPE
4: UPPER CONTACT TYPE

FOR AUTOMATIC MOUNTING (SMT)

PLATING VARIATION

PACKAGE STYLE

LEAD FREE

NOTES

1. THIS PRODUCT IS THE CONNECTOR USED FOR FPC AND CYPES WITH AUTOMATIC MOUNTING (SMT).
2. THIS CATALOG NO. INDICATES PLASTIC TAPE PACKAGED
3. SEE PART DRAWINGS FOR DIMENSIONS F~H.
4. THIS PRODUCT IS THE CONNECTOR WITH CABLE LOCK MECHANISM.

mat'l. code				surface ISO 1302 ✓		tolerance ISO 406 ISO 1101		projection		product family 58EF				
ltr	ecn no	dr	date	tolerances unless otherwise specified							title			
A	J05-0703	H.T	'05/10/19								CAT. NO. TABLE FOR PLASTIC TAPE PACKAGED 0.5 mm CONTACT SPACING CONNECTOR (Cat. No. : SFV__R-3/4STAE1LF)			
B	J06-0372	H.T	'06/9/7	angles	linear						dwg no			
											sheet 1 of 1			
				dr	H. Takahashi		9/7/06			JSA 96802			A4	
				engr	H. Takahashi		9/7/06			type Product Customer Drawing				
				chr	R. Shouji		7/8/06							
				appd	S. S. S. S.		9/7/06							
sheet index	revision sheet	B	1											Rev. B

SC-SFV07 JSA96799 96803 96804

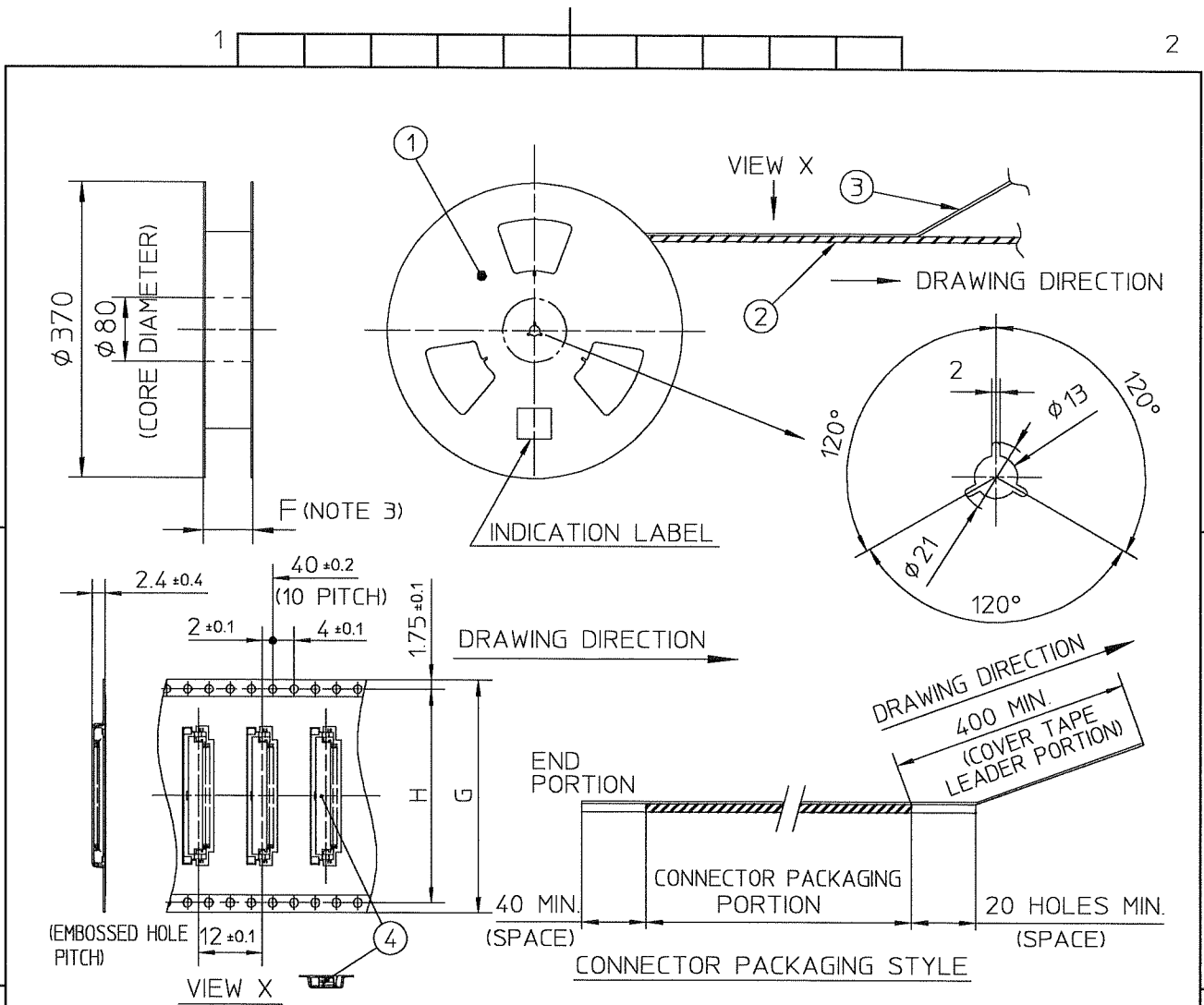
1

2



FCIconnect.com

Copyright FCI



PT. NO.	PARTS NAME	CAT. NO.	MATERIAL	Q'TY	NOTE
1	REEL	—	CARDBOARD	1	COLOR : WHITE
2	PLASTIC (EMBOSS) TAPE	—	A-PET	—	COLOR : TRANSPARENCY
3	COVER	—	POLYESTER	—	COLOR : TRANSPARENCY
4	CONNECTOR	SFV__R-3STA__LF	SEE ATTACHED DWG.	3000	LOWER CONTACT TYPE WITH CABLE LOCK MECHANISM

NOTES

1. THIS IS PLASTIC TAPE PACKAGED CONNECTOR USED FOR FPC AND COPES WITH AUTOMATIC MOUNTING (SMT).
2. SEE JIS C 0806 (PACKING OF ELECTRONIC COMPONENTS ON CONTINUOUS TAPES (SURFACE MOUNTING DEVICES)) FOR SHAPE AND DIMENSIONS OF PLASTIC (EMBOSS) TAPE AND REEL.
3. F DIMENSION IS PORTION OF THE CORE.

mat'l. code				surface ISO 1302 ✓	tolerance ISO 406 ISO 1101	projection 	product family 58EF			
ltr	ecn no	dr	date	tolerances unless otherwise specified			title PLASTIC TAPE PACKAGED 0.5 mm CONTACT SPACING CONNECTOR (Cat. No. : SFV__R-3STAE1LF)			
A	J05-0703	H.T	'05/10/19	angles	linear					
B	J06-0372	H.T	'06/9/7	±5°		scale X	dwg no sheet 1 of 1 size JSA 96803 A4			
				dr	engr	chr				
				appd			type Product Customer Drawing			
sheet index	revision	B								
	sheet	1								Rev. B

SC-SFV07
form: A4

JSA96802

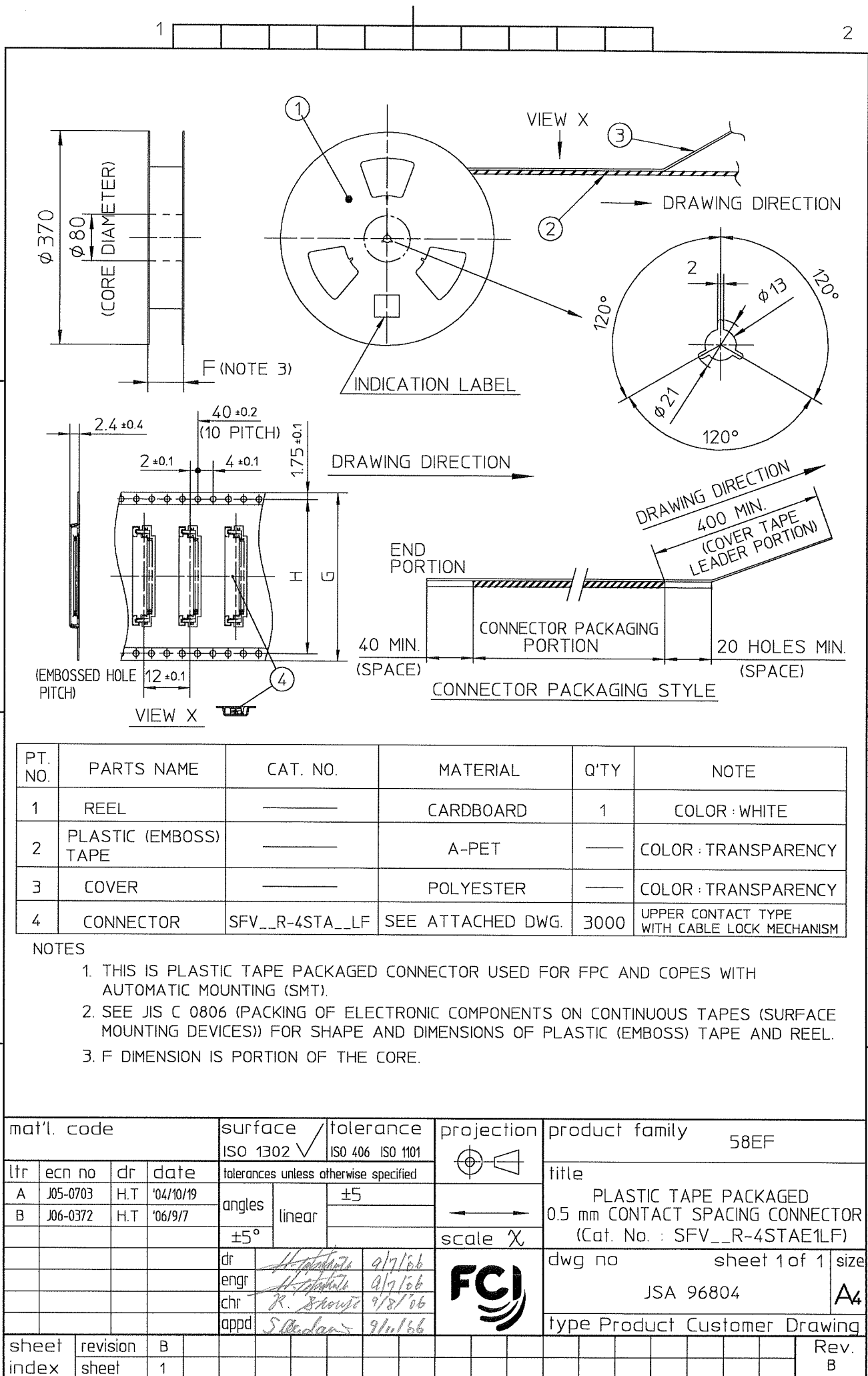
1

2

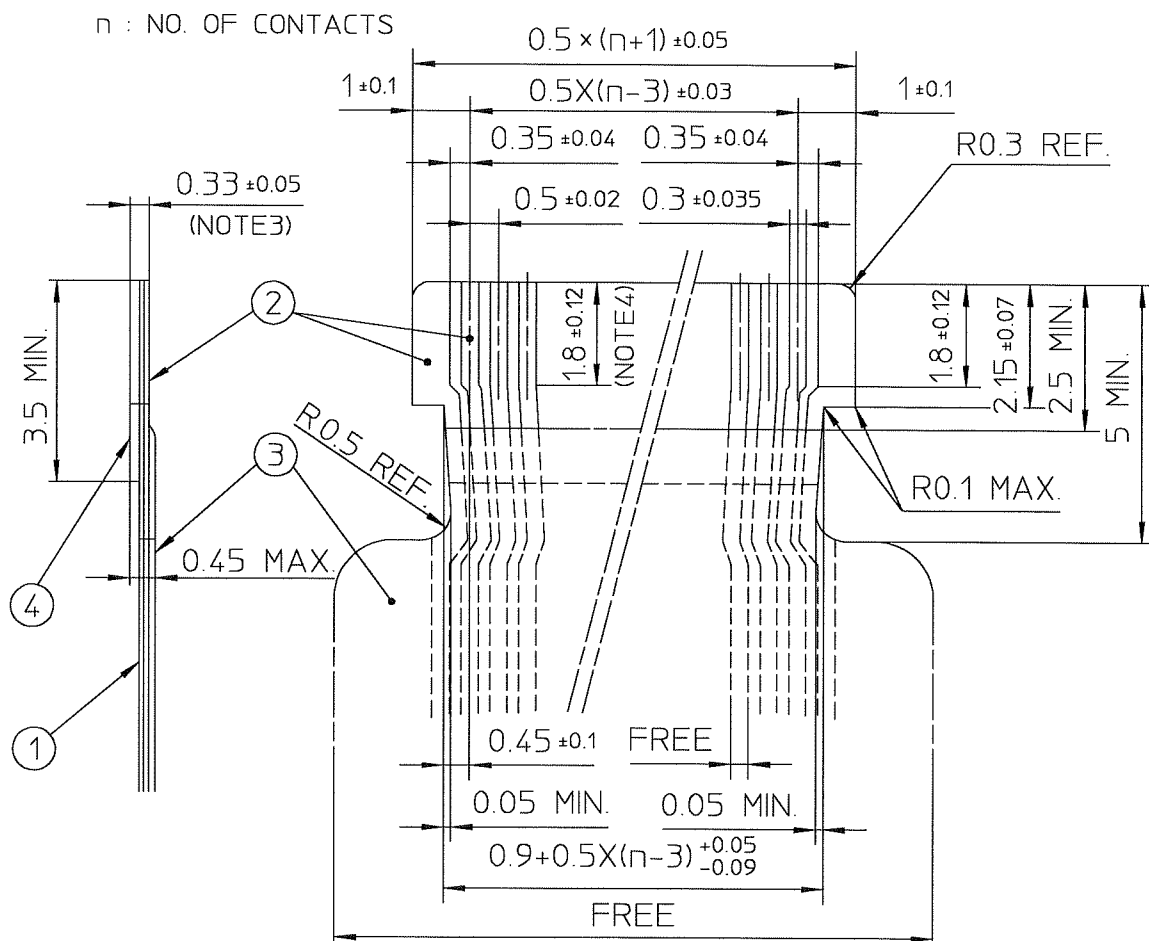


FCIconnect.com

Copyright FCI



RECOMMENDED CABLE (FPC)



PT. NO.	PARTS NAME	MATERIAL	THICKNESS(μm)
1	BASE FILM	POLYIMIDE OR POLYESTER OR EQUAL	25
2	CONDUCTOR	COPPER FOIL(PLATING : GOLD)	35
3	OVERLAY	POLYIMIDE OR POLYESTER OR EQUAL	—
4	SUPPORTING TAPE	POLYESTER OR POLYIMIDE OR EQUAL	188

NOTES

1. NO BURR AT EACH PORTION.
2. NO PEELING IN COMMON USE.
3. TOTAL THICKNESS LIMIT OF EACH MATERIAL (INCLUDING ADHESIVE AGENT) IS SPECIFIED.
4. THIS DIMENSION INDICATES THE RANGE FOR 0.3 ± 0.035 CONDUCTOR WIDTH.

mat'l. code				surface ISO 1302 ✓		tolerance ISO 406 ISO 1101		projection		product family 58EF	
ltr	ecn no	dr	date	tolerances unless otherwise specified						title	
A	J04-0454	H.T	'05/2/7							RECOMMENDED CABLE	
B	J06-0372	H.T	'06/9/7	angles	linear			scale X		(Cat. No. : SFV__R-3/4ST__LF)	
				dr	9/7/06		FCI		dwg no		sheet 1 of 1
				enr	9/7/06				JSA 96191		size A4
				chr	9/8/06				type Product Customer Drawing		
				appd	9/10/06						
sheet index	revision sheet	B	1							Rev. B	