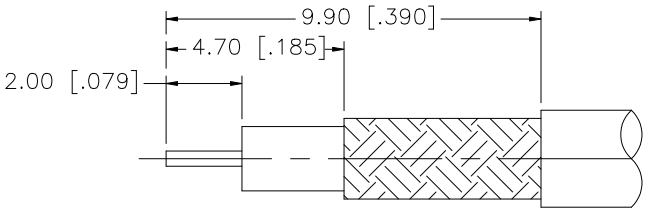
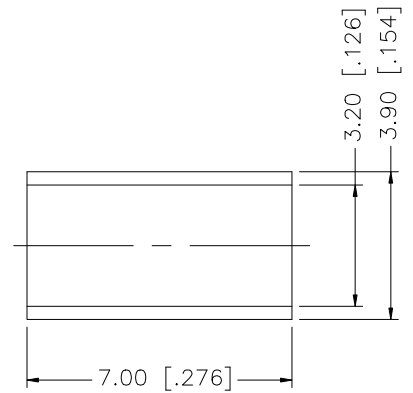
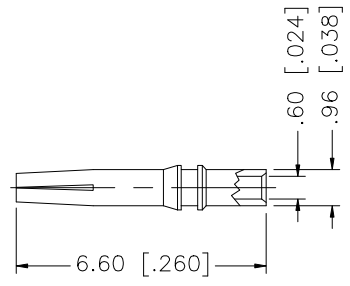
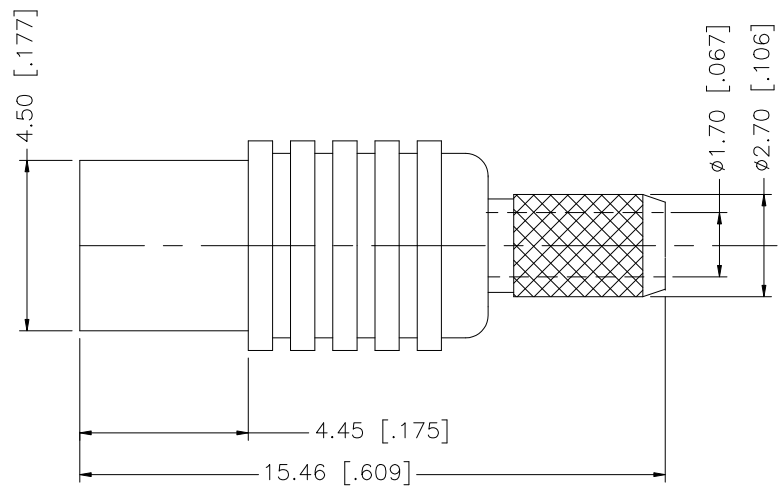


REV.	DATE	DESCRIPTION
NC	01/22/98	INITIAL RELEASE
A	08/26/07	REVISE BARREL AND FERRULE, UPDATE DRAWING FORMAT



RECOMMENDED CABLE
STRIPPING DIMENSIONS



NOTE:
1. CRIMPED FERRULE HEX CRIMP SIZE .128"
2. CONTACT PIN TO SOLDER.

8					UNLESS OTHERWISE SPECIFIED DIMENSIONS ARE IN MILLIMETERS. DIMENSIONS IN [] ARE INCHES AND FOR CUSTOMER REFERENCE ONLY. UNLESS OTHERWISE SPECIFIED TOLERANCES FOR MILLIMETERS ARE: 0.5 – 8mm ± 0.20mm 8 – 30mm ± 0.40mm 30 – 120mm ± 0.50mm UNLESS OTHERWISE SPECIFIED TOLERANCES FOR INCHES ARE: .020 – .315 = ± 0.007” .315 – 1.180 = ± 0.015” 1.180 – 4.724 = ± 0.020”	APPROVALS		DATE		Amphenol Connex					
7						DRAWN	G.R.S.	08/26/07							
6						CHECKED				PART DESCRIPTION MCX CRIMP JACK (FOR RG-174/U, 188A/U, 316/U)					
5						ISSUED									
4	FERRULE	COPPER	NICKEL	1		SHEET	1 OF 1								
3	CONTACT PIN	BER. COPPER	GOLD	1	DO NOT SCALE DRAWING			PART NO.		252138					
2	INSULATOR	TEFLON	NATURAL	1											
1	BODY	BRASS	NICKEL	1											
DESCRIPTION		MATERIAL	FINISH	QTY		CAD FILE		DWG. NO.	252138.DWG	REV.	A	SIZE	A	SCALE	NA
						C:/252/252138.DWG									

Mouser Electronics

Authorized Distributor

Click to View Pricing, Inventory, Delivery & Lifecycle Information:

[Amphenol:](#)

[252138](#)