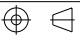


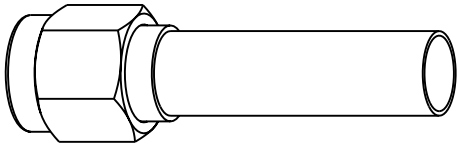
NOTES:

1. MATERIALS OF CONSTRUCTION:
BODY & SHELL = BRASS, NICKEL PLATED (.000100 THICK)
CONTACT PIN = BRASS, GOLD PLATED (.000050 THICK)
RETAINING RING = BeCu
FERRULE = COPPER, NICKEL PLATED (.000100 MAX THICK)
INSULATOR = PTFE
GASKET = SILICONE RUBBER, COLOR RED
HEAT SHRINK TUBING =
2. CRIMPED FERRULE: HEX CRIMP SIZE .151
CONTACT PIN TO SOLDER.

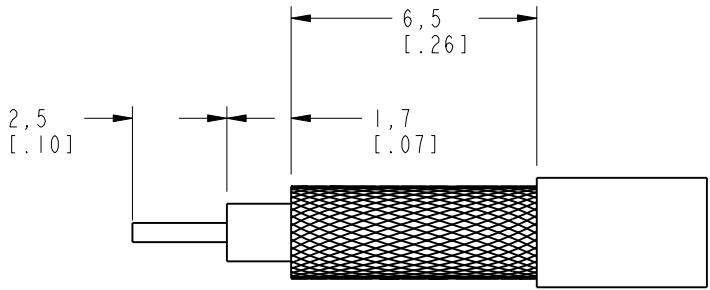
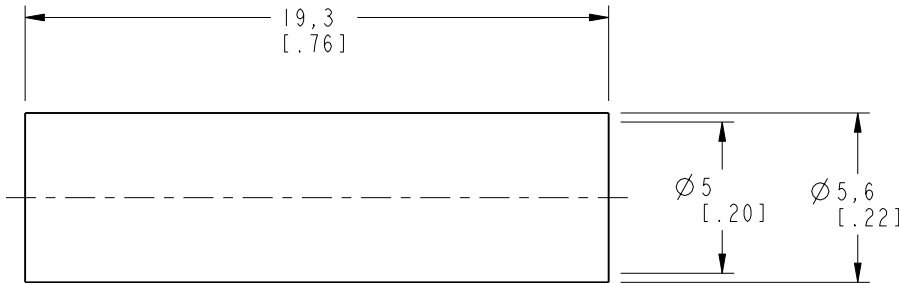
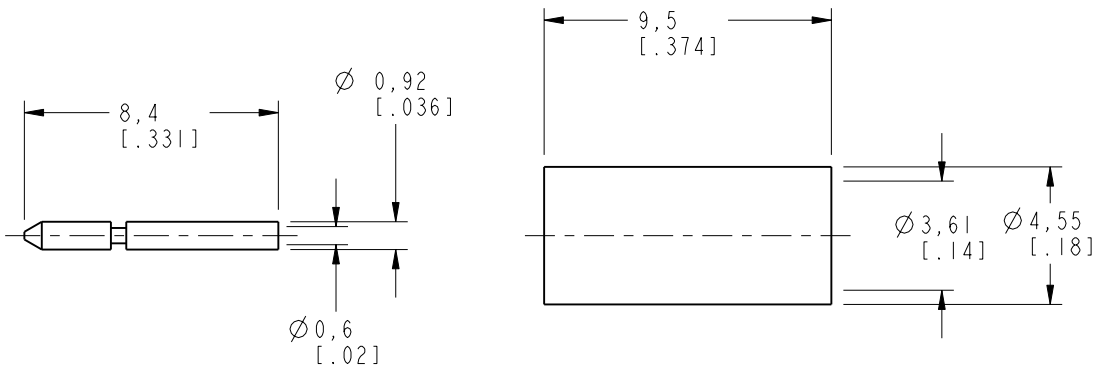
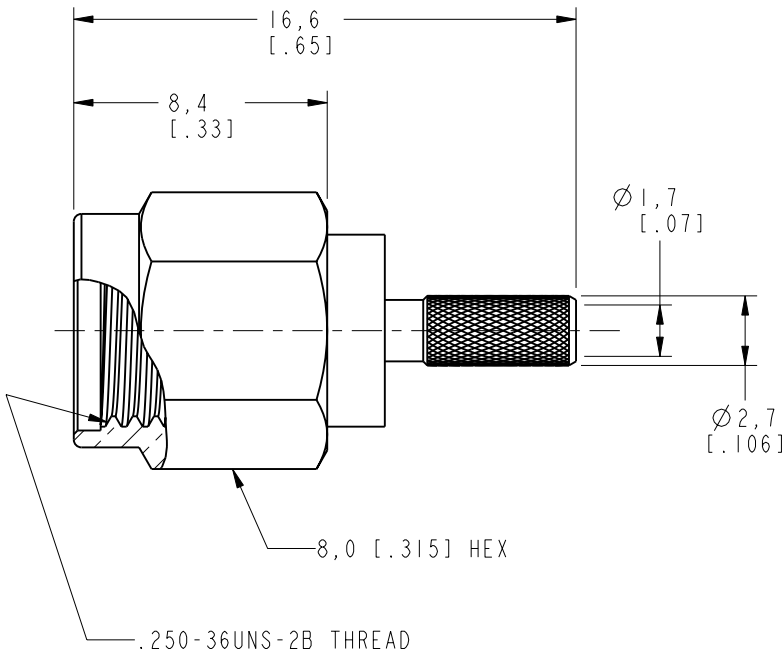
901-10024-RFX

REVISIONS

DRAWING NO.	REV	DESCRIPTION	DATE	ECO	APPR
THIRD ANGLE PROJ. 	A	RELEASE TO MFG.	1/21/00	43238	CPM
	B	BODY Ø2,7 WAS 2,3; FERR ID WAS 3,4 & OD WAS 4,4; KJ# WAS SMA1111A2-NT50G-316U/D-50	9/14/01	43834	CPM



SCALE 2.000



RECOMMENDED
CABLE STRIPPING DIM'S.
SCALE 5.000

CUSTOMER OUTLINE DRAWING
ALL OTHER SHEETS ARE FOR INTERNAL USE ONLY

UNLESS OTHERWISE SPECIFIED, DIMENSIONS ARE IN INCHES AND TOLERANCES ARE: 0.5 - 6mm ±0.2mm 6 - 30mm ±0.4mm 30 - 120mm ± 0.6mm	MATERIAL	DRAWN C. McGRATH	DATE 18-Jan-00	TITLE SMA CRIMP PLUG FOR RD 316 CABLE			Amphenol Amphenol Corporation Communication and Network Products Division Danbury, CT U.S.A. 06810		
	REFERENCE GEN# ASSYM15_SMA	ENGINEER T. AUBIN	DATE 18-Jan-00						
		APPROVED T. AUBIN	DATE 19-Jan-00	CODE ID 74868	DWG SIZE B	DRAWING NO. 901-10024-RFX	REV B		
		CAD FILE I:\SMA\901-10024-RFX							
NOTICE - These drawings, specifications, or other data (1) are, and remain the property of Amphenol Corp. (2) must be returned upon request; and (3) are confidential and not to be disclosed to any person other than those to whom they are given by Amphenol Corp. The furnishing of these drawings, specifications, or other data by Amphenol Corp., or to any other person to anyone for any purpose is not to be regarded by implication or otherwise in any manner licensing, granting rights or permitting such holder or any other person to manufacture, use or sell any product, process or design, patented or otherwise, that may in any way be related to or disclosed by said drawings, specifications, or other data.									
				SCALE: 4.0:1		SHEET		2 OF 2	