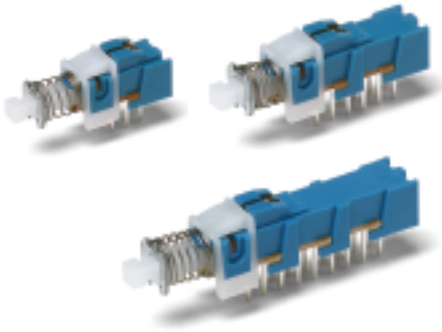


PHA Series

Short Stroke Pushbutton Switches



- Features/Benefits**
 - *Momentary or latching action*
 - *Low cost, reliable contact design*
 - *2, 4 & 6 pole configurations*
 - *Sealed contacts*
 - *Optional buttons*
 - *RoHS compliant*

Typical Applications
 - *Computers and peripherals*
 - *Instrumentation and measurement equipment*
 - *Non-power, on-off switch applications*

Specifications

SWITCHING POWER MAX.: 3 W DC
SWITCHING VOLTAGE MAX.: 30 V DC
SWITCHING CURRENT MAX.: 100 mA DC
DIELECTRIC STRENGTH (50 Hz/1 min.): 500 V between open contacts. 1500 V between chassis and contacts.
OPERATING LIFE: Impulse/momentary (OA): $\wedge 10^4$ operations.
Latching (EE): $\wedge 10^4$ operations
CONTACT RESISTANCE: New: %20 mΩ
After 105 operations: %40 mΩ
INSULATION RESISTANCE: $\wedge 10^{10}\Omega$
CAPACITANCE: %1.5 pF
CONTACT BOUNCE: %2 ms
Operating speed 200 mm/s (7.87 inch/s)
TOTAL TRAVEL/LATCHING TRAVEL: 2.5mm/1.5mm
(.0984 inch/.0591 inch)
OPERATING FORCE:
2U: 170cN±50cN (170 grams±50 grams)
4U: 230cN±70cN (230 grams±70 grams)
6U: 300cN±100cN (300 grams±100 grams)
SEALING: Sealed contacts.

Materials

FIXED TERMINAL: Brass, silver plated.
MOVABLE CONTACT: Phosphor bronze, silver plated.
SWITCH BODY: PPE
ACTUATOR: POM
STANDOFF CLIP: POM
RETURN SPRING: Music wire.
RETURN SPRING RETAINER: Carbon steel, tin plated.
DETENT SPRING PLATE: Phosphor bronze.
DETENT SPRING: Stainless steel.
BASE: Laminated phenolic.
TERMINAL SEAL: Epoxy.

NOTE: Specifications and materials listed above are for switches with standard options. For information on specific and custom switches, consult Customer Service Center.

Build-A-Switch

To order, simply select desired option from each category and place in the appropriate box. Available options are shown and described on pages A-85 thru A-87. For additional options not shown in catalog, consult Customer Service Center.

Switch

P

H

A

Contact Arrangement

2U 2 Changeovers
4U 4 Changeovers
6U 6 Changeovers

Mechanical Function

OA Momentary
EE Push-push

Button

Indexed

G001A Black
G001G Gray
G001I Ivory
G001R Red

Round

G003A Black
G003G Gray
G003I Ivory
G003R Red

Rectangular

G002A Black
G002G Gray
G002I Ivory
G002R Red

Square

G004A Black
G004G Gray
G004I Ivory
G004R Red

BUTTON REMOVAL
A button of a push-push switch should only be removed in the "OFF" non-latching position.

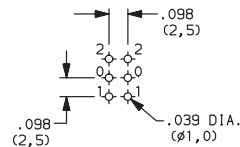
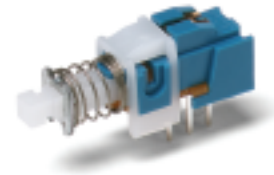
Dimensions are shown: Inches (mm)
Specifications and dimensions subject to change

A-84

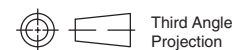
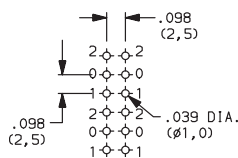
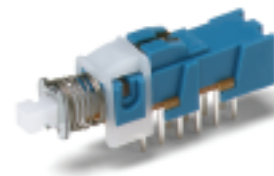
www.ck-components.com

Pushbutton

2U 2 CHANGEOVERS



4U 4 CHANGEOVERS



Dimensions are shown: Inches (mm)
Specifications and dimensions subject to change

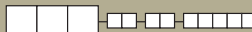


A

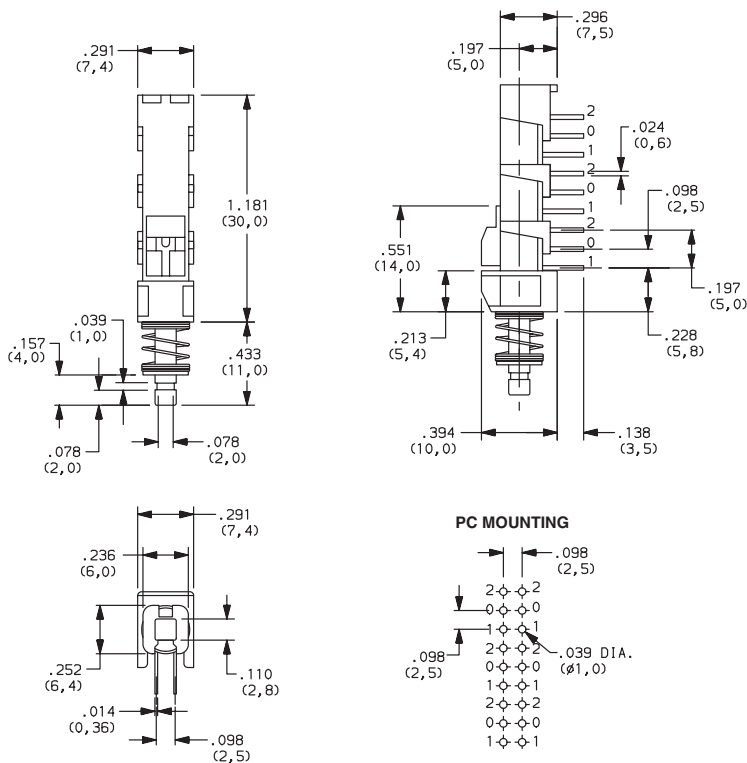
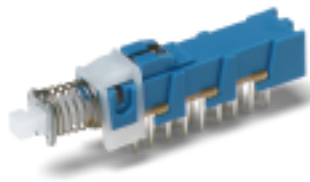
Pushbutton

PHA Series Short Stroke Pushbutton Switches

DESIGNATION



6U 6 CHANGEOVERS



CONTACT ARRANGEMENT



OPTION CODE	NO. OF POLES *	SCHEMATIC
2U	2PDT	
4U	4PDT	
6U	6PDT	

*Non-shorting contacts.

MECHANICAL FUNCTION



OPTION CODE	FUNCTION
OA	Momentary
EE	Push-push

C&K



Third Angle
Projection

Dimensions are shown: Inches (mm)
Specifications and dimensions subject to change

PHA Series Short Stroke Pushbutton Switches



A

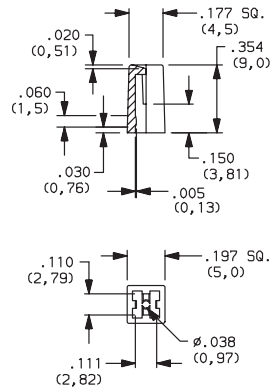
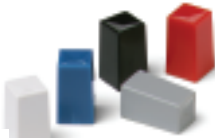
Pushbutton

BUTTONS



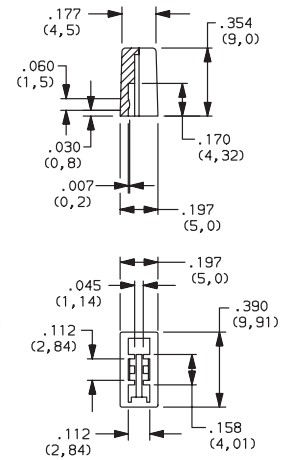
Indexed

- G001A** Black
- G001G** Gray
- G001I** Ivory
- G001R** Red



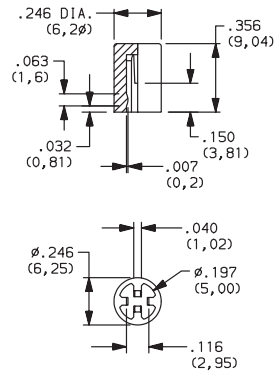
Rectangular

- G002A** Black
- G002G** Gray
- G002I** Ivory
- G002R** Red



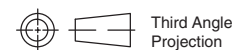
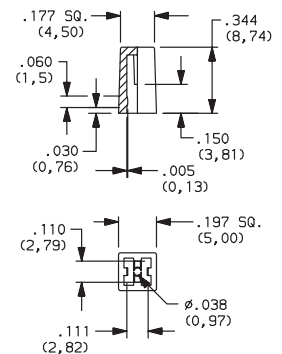
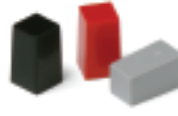
Round

- G003A** Black
- G003G** Gray
- G003I** Ivory
- G003R** Red



Square

- G004A** Black
- G004G** Gray
- G004I** Ivory
- G004R** Red



Dimensions are shown: Inches (mm)
Specifications and dimensions subject to change