

Sollatek Faxguard

The Sollatek *Faxguard* is designed to give protection against all types of mains and signal line borne spikes and surges. These spikes are generally caused by nearby lightning strikes or by switching of motorised equipment. The Faxguard also offers high mains voltage protection.

By connecting to a *Faxguard* you will ensure clean, safe power for your valuable telecommunications equipment.

PLEASE READ CAREFULLY.

- I **Ensure that you received an RJ11-RJ11 black telephone cable with your Faxguard.**
- II Make sure that your load does not exceed the rating of the *Faxguard* (5A).
- III Plug the *Faxguard* into the mains outlet. **The outlet must be earthed. If not or you are unsure, then contact your electrician or a Sollatek reseller.** ①
- IV Plug your fax machine's mains plug into it. ②
- V From the fax machine end, unplug the telephone cable and plug it into the FAX IN socket on the *Faxguard*. ③
- VI Plug one end of the **supplied cable** into FAX OUT on the *Faxguard*, ④ the other end into your fax machine. ⑤
- VII Your fax or phone is now protected and ready for use.

The LEDs on the front of the Faxguard indicate the state of the mains output from the Faxguard. If the incoming supply voltage is too high the disconnect function will operate and the OFF LED will be lit. When the supply becomes good again the unit waits 30s before re-connecting. During this time the WAIT LED will be lit. When the supply is good and the output connected the ON LED will be illuminated.

Sollatek (UK) Ltd.
Unit 4/5, Trident Industrial Estate,
Blackthorne Road, Poyle,
SLOUGH SL3 0AX.
ENGLAND.

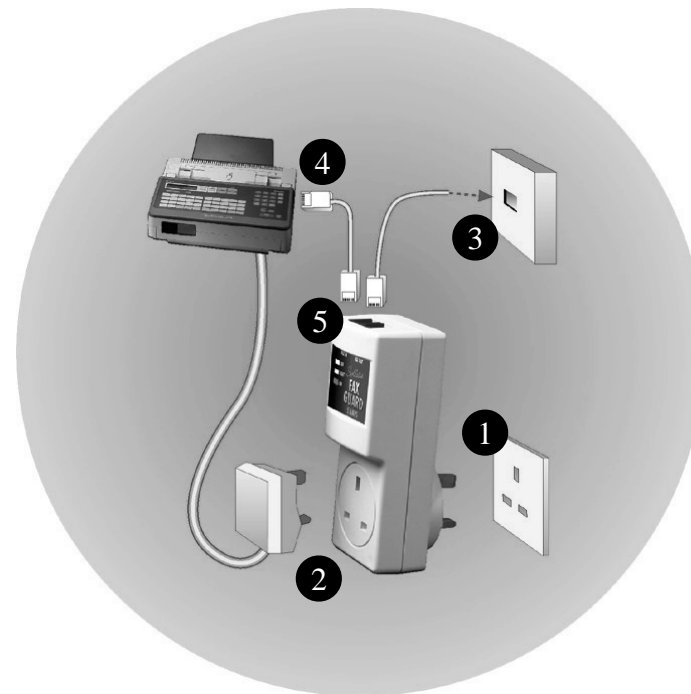
Tel. 01753 688300 Fax. 01753 685306 Email: sales@sollatek.com

Sollatek
The Power To Protect

TECHNOLOGY

QUALITY

SERVICE



Specifications

Nominal Voltage	230V or 110V
Current Rating	5Amps
Frequency	50/60Hz
Mains Spike Response Time	<10ns
Mains Spike Discharge Amps	>3kA (6.5kA max)
Spike Protection	200J
Disconnect Response Time	<20ms
High Voltage Disconnect	265V for 230V (135V for a 110V system)
Reconnect Wait	30 second
Reconnect Volage	260V for 230V (130V for 110V system)
Line Spike Response Time	10µs (<10ns with transient suppression)
Line Spike Discharge Amps	>5kA
Line Resistance	Negligible (27ohms with transient suppression)