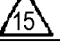
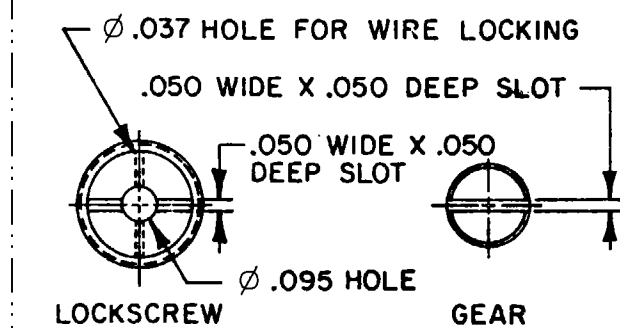
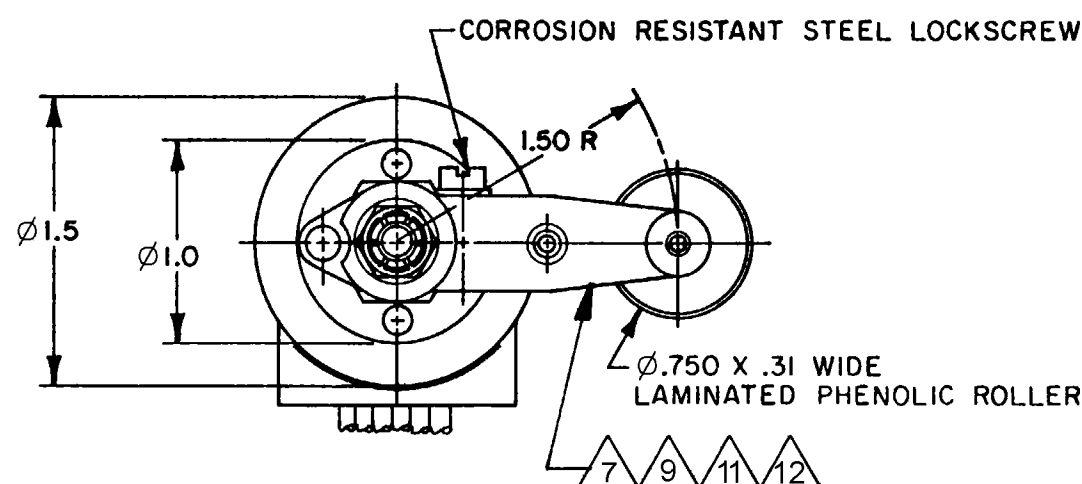


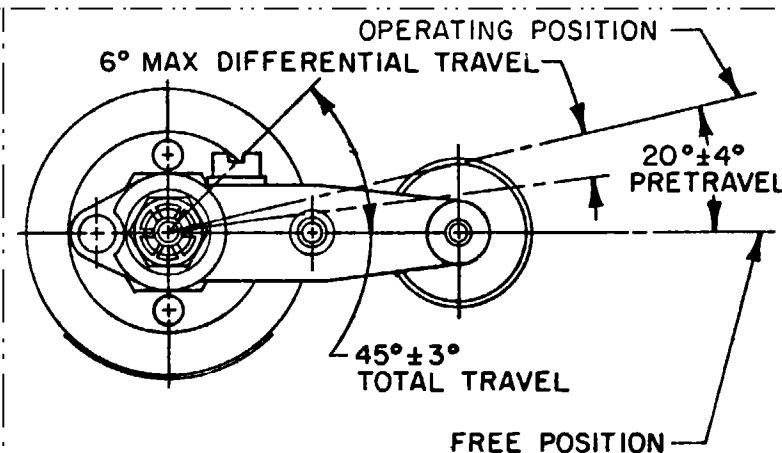
HONEYWELL
PART NUMBER
35EN24-4
FAA-PMA 

REV	DOCUMENT	CHANGED BY	CHECK
12	0050529	SSK 26MAR09	CMH



ROLLER LEVER MAY BE ADJUSTED FOR AN INFINITE NUMBER OF POSITIONS THRU 360°. ADJUSTMENT IS MADE BY LOOSENING THE LOCK NUT AND THEN THE LOCKSCREW AND TURNING GEAR UNTIL LEVER IS IN DESIRED POSITION. LOCKSCREW AND LOCK NUT ON SHAFT IS THEN TIGHTENED TO POSITIVELY LOCK LEVER IN POSITION.

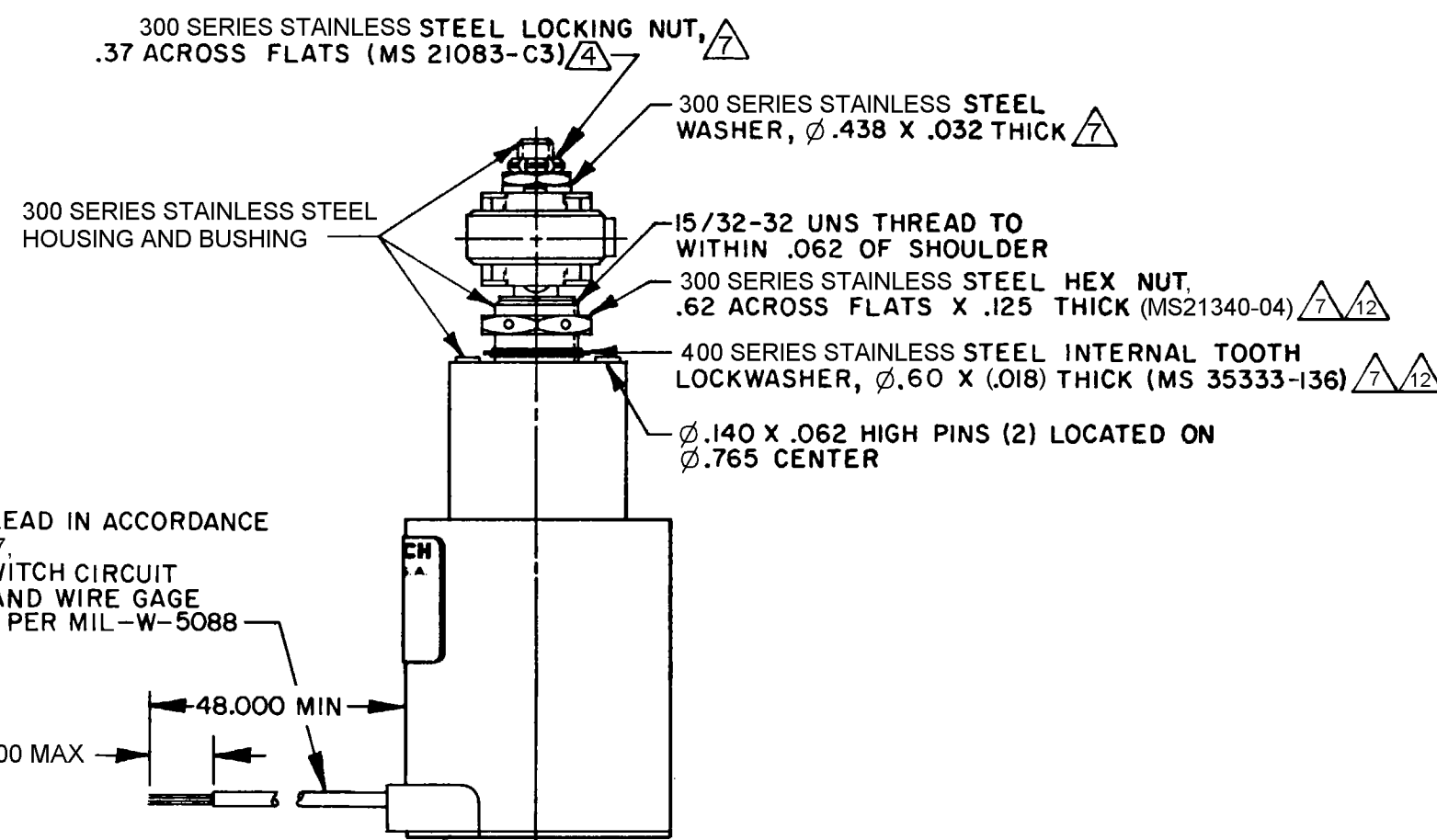
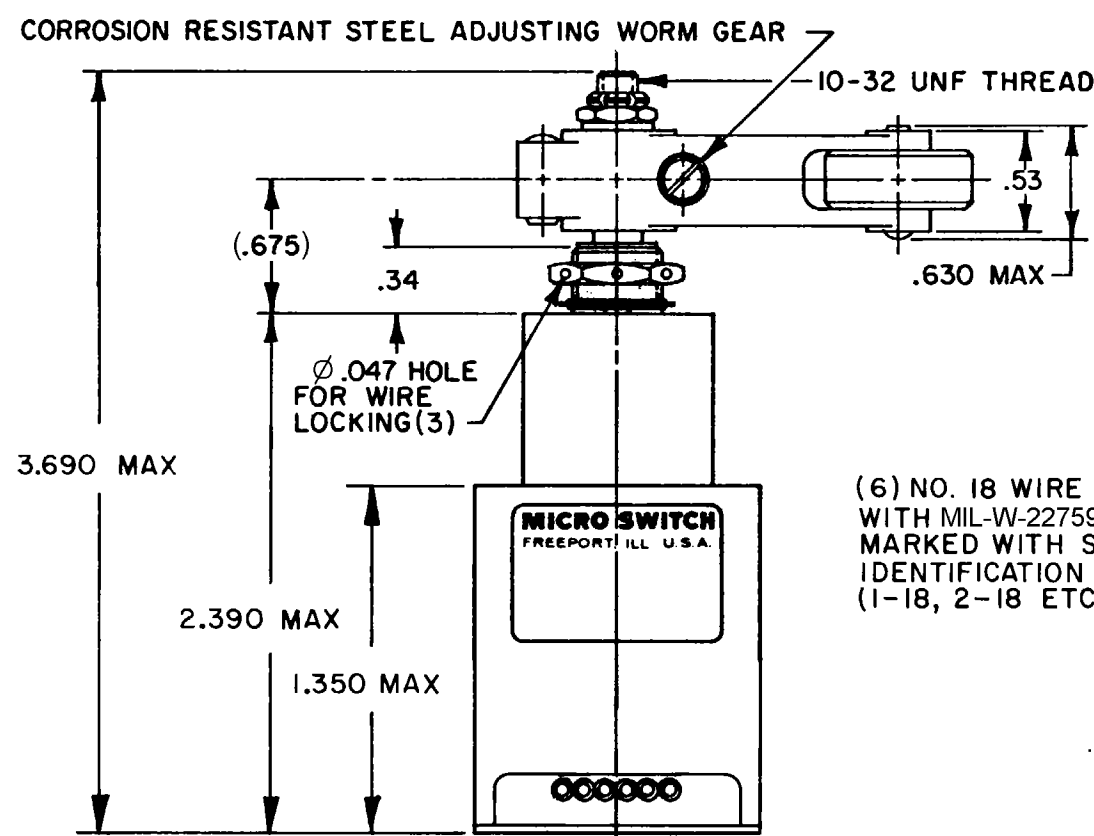
LEVER ADJUSTMENT DETAIL



CHARACTERISTICS

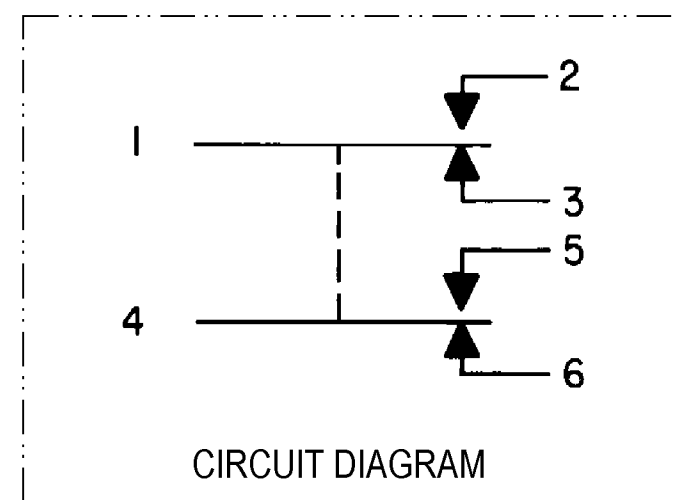
SPECIFICATION DETAILS:

STANDARD:	CONFORMS TO MS21320-8 (MIL-PRF-8805/48), EXCEPT AS NOTED		
CONSTRUCTION:			
ENCLOSURE DESIGN	RESILIENT SEAL PER MIL-PRF-8805, SYMBOL 4		
CONTACT MATERIAL & CONFIGURATION	GOLD BIFURCATED CONTACTS		
CIRCUIT CONFIGURATION	2 S.P.D.T.		
TERMINATION	LEADWIRES MIL-W-22759/7		
WEIGHT	11 OZ. MAX		
O-RING MATERIAL	E.P.RUBBER		
ELECTRICAL CHARACTERISTICS:			
ELECTRICAL RATINGS	MAX LOAD	SEA LEVEL	50,000 FT
-SEA LEVEL	28 VDC		28 VDC
-50,000 FEET	RESISTIVE 1.0 AMP INDUCTIVE 0.5 AMP		1.0 AMP 0.5 AMP
DIELECTRIC STRENGTH & INSULATION RES (BASIC SWITCH)	DIELECTRIC STRENGTH		INSULATION RESISTANCE
-BETWEEN TERMINALS AND EXPOSED NON-CURRENT CARRYING METAL	(≈ 60 Hz FOR 5 SECONDS)		(500 VDC±10%)
-BETWEEN TERMINALS OF MUTUALLY INSULATED CIRCUITS	1000 V Rms, 500 μ A (MAX LEAKAGE)		1000 Megohms MIN
-BETWEEN ALL UNCONNECTED TERMINALS OF THE SAME POLE	1000 V Rms, 500 μ A (MAX LEAKAGE)		1000 Megohms MIN
SWITCH RESISTANCE	2.0 OHMS MAX (MEASURED AT 5.0 VDC, 0.1mA)		13
RECOMMENDATION OR USE IN APPL LESS THAN .5 amps AND/OR 12 volts	PREFERRED 10		
MECHANICAL CHARACTERISTICS:			
OPERATING TORQUE	12-25 IN-LBS		
RELEASE TORQUE	9 IN-LBS MIN (AS ADJUSTED); 4 IN-LBS MIN (AFTER 25K OPS)		
DIFFERENTIAL TRAVEL	SEE LEVER DETAIL		
OVERTRAVEL	SEE LEVER DETAIL		
FULL OVERTRAVEL TORQUE	40 IN-LBS MAX		
FREE POSITION	SEE LEVER DETAIL		
PRETRAVEL	SEE LEVER DETAIL		
MOUNTING STRENGTH	15 IN-LBS		
ACTUATOR STRENGTH	10 LBS APPLIED IN A DIRECTION TO CAUSE SWITCH TO ACTUATE		
LIFE:			
MECHANICAL LIFE	25,000 MIN PER MIL-PRF-8805/48		14
ELECTRICAL LIFE AT FULL RATED LOAD	25,000 MIN PER MIL-PRF-8805/48		14
ENVIRONMENTAL:			
TEMPERATURE RANGE	-55° C TO +85° C		
ALTITUDE RANGE	SEA LEVEL TO 50,000 FT		
SHOCK	PER MIL-PRF-8805 SYMBOL M-100g		
VIBRATION	PER MIL-PRF-8805 SYMBOL 1 -10-500 Hz & 10g PEAK		
MOISTURE RESISTANCE	PER MIL-PRF-8805 (10 DAY TEST)		
THERMAL SHOCK	PER MIL-PRF-8805 (5 CYCLE TEST)		
SALT SPRAY	PER MIL-PRF-8805 (96 HOUR TEST)		



NOTES

- CORROSION RESISTANT STEEL ENCLOSURE
- SWITCH SEALED PER MIL-PRF-8805 SYMBOL 4
- CIRCUIT DIAGRAM, CATALOG LISTING, DATE CODE, FED. MFG. CODE AND FAA - PMA ARE SHOWN ON NAMEPLATE
- DO NOT APPLY MORE THAN 20-25 INCH-POUNDS OF TORQUE WHEN TIGHTENING LOCKING NUT
- SHAFT SEAL MATERIAL E.P.RUBBER
- BASIC SWITCHES HAVE BIFURCATED GOLD CONTACTS
- HARDWARE MAYBE PACKAGED UNASSEMBLED PER MIL-PRF-8805
- TOTAL TRAVEL OF ROLLER LEVER IS 45° ± 3° IN COUNTER-CLOCKWISE DIRECTION ONLY, WITH SPRING RETURN TO NEUTRAL
- CHROMATED ALUMINIUM DIE CAST LEVER
- CONTACT HONEYWELL-MICRO SWITCH IF ADDITIONAL INFORMATION ON LOW ENERGY LOADS IS REQUIRED OR FOR HELP WITH SPECIFIC APPLICATIONS
- REPLACEMENT LEVER 6PA30
- REPLACEMENT MOUNTING HARDWARE - PACKET 19PA209-EN
- AS MANUFACTURED SWITCH RESISTANCE SHOULD NOT EXCEED THE VALUE SPECIFIED WHEN MEASURED AT ACTUATOR FREE POSITION AND FULL OVERTRAVEL. A NEW SWITCH AS INSTALLED CARRYING APPLICATION LOADS SHOULD HAVE SWITCH RESISTANCE NOT EXCEEDING 1% OF THE LOAD IMPEDANCE. HONEYWELL-MICRO SWITCH VERIFIES SWITCH RESISTANCE USING THE FOUR-WIRE VOLTAGE DROP METHOD
- LIFE RATINGS ARE PER MIL-PRF-8805 REQUIREMENTS. ACTUAL LIFE EXCEEDS RATED LIFE. CONTACT HONEYWELL-MICRO SWITCH FOR ADDITIONAL DATA
- FOR MANUFACTURING DETAIL SEE ASSEMBLY DRAWING 35EN24-4 FOR FAA-PMA



CIRCUIT DIAGRAM

DESIGN UNITS: INCH		DRAWN	JAP	29APR80	<div>Honeywell</div>				
TOLERANCES UNLESS NOTED:		CHECK	DJW	01MAY80					
NO PLACES	X ±	THIS DRAWING COVERS A PROPRIETARY ITEM AND IS THE PROPERTY OF HONEYWELL. THIS DRAWING IS NOT TO BE COPIED OR USED WITHOUT THE PERMISSION OF HONEYWELL.			TITLE <div>SWITCH - ENCLOSED</div>				
ONE PLACE	.X ±								
TWO PLACE	.XX ±								
THREE PLACE	.XXX ±								
FOUR PLACE	.XXXX ±	INTERPRET PER ASME Y14.5M-1994 OTHER HONEYWELL ENGINEERING STANDARDS MAY APPLY			SIZE	TYPE	CAGE CODE	DRAWING NAME	REV
ANGLES	X ±	RASTER			C	I	91929	35EN24-4	12
THIRD ANGLE PROJECTION					SCALE - NONE		SHEET 1 OF 1		

Mouser Electronics

Authorized Distributor

Click to View Pricing, Inventory, Delivery & Lifecycle Information:

[Honeywell:](#)

[35EN24-4](#)