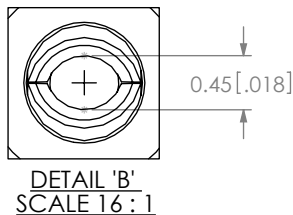
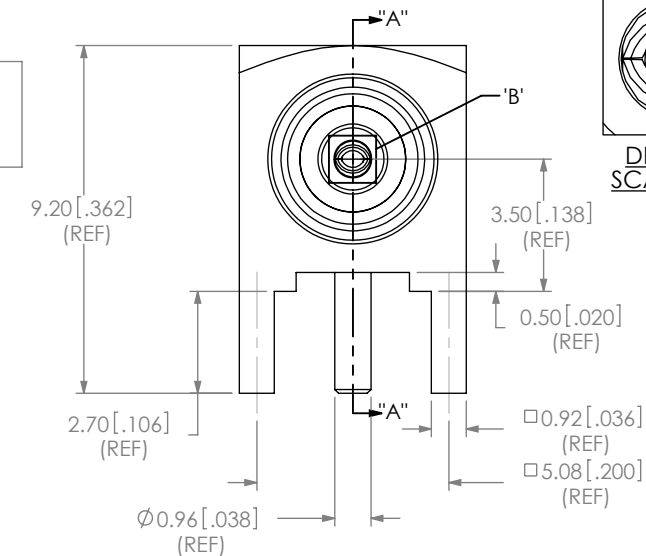
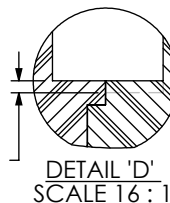


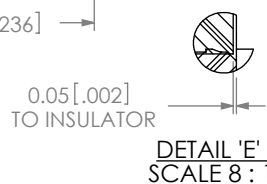
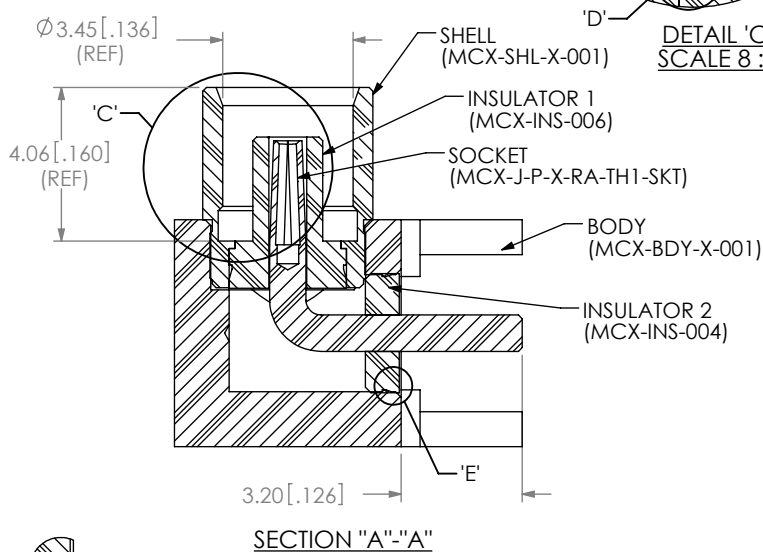
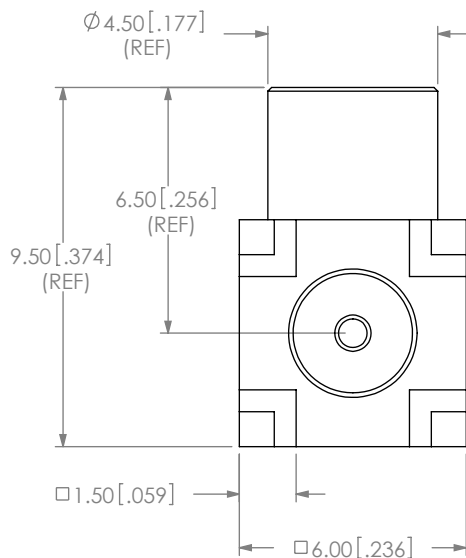
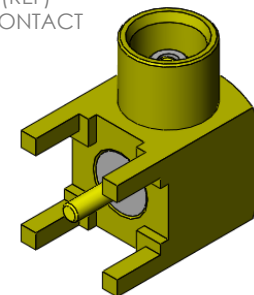
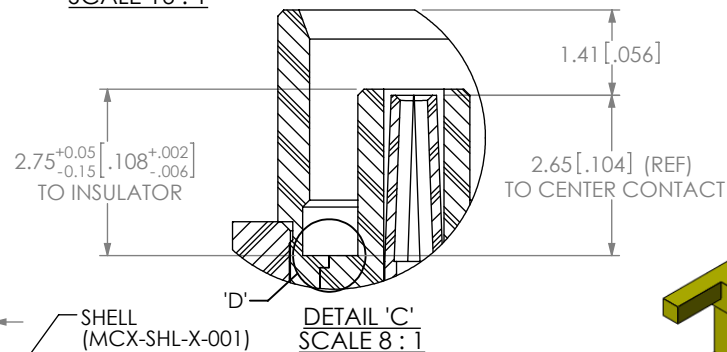
DO NOT  
SCALE FROM  
THIS PRINT



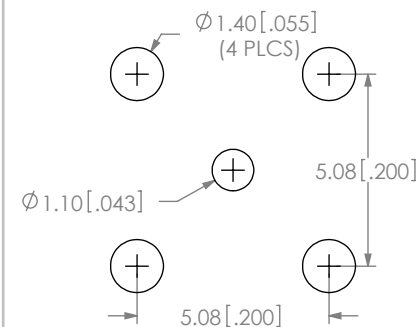
DESIGNED & DIMENSIONED  
IN MILLIMETERS[INCHES]



PLATING SPECIFICATION  
-H: HEAVY GOLD IN CONTACT  
AREA, FLASH GOLD ON BALANCE



RECOMMENDED PCB LAYOUT



NOTES:

1.  $\phi$  REPRESENTS A CRITICAL DIMENSION.
2. PUSHOUT FORCE FOR INSULATOR: 20 N[4.5 LB] MIN.
3. SEE CO-HD-WI-3040M RF PACKAGING FOR PACKAGING INSTRUCTIONS, USE SAMTEC TRAY TY-SMA001-1 AND TY-SMA001-2. QUANTITIES LESS THAN A FULL TRAY WILL NOT BE PACKAGED IN TRAYS.
4. RoHS COMPLIANT.

c:\enterprise\dwg\MISC\MKTG\MCX-J-P-X-RA-TH1-MKT.SLDDRW

UNLESS OTHERWISE SPECIFIED,  
DIMENSIONS ARE IN MILLIMETERS.  
TOLERANCES ARE:  
DECIMALS ANGLES  
.X:  $\pm 0.3 [.01]$  2°  
.XX:  $\pm 0.13 [.005]$   
.XXX:  $\pm 0.051 [.0020]$

PROPRIETARY NOTE

THIS DOCUMENT CONTAINS INFORMATION  
CONFIDENTIAL AND PROPRIETARY TO  
SAMTEC, INC. AND SHALL NOT BE REPRODUCED  
OR TRANSFERRED TO OTHER DOCUMENTS OR  
DISCLOSED TO OTHERS OR USED FOR ANY  
PURPOSE OTHER THAN THAT WHICH IT WAS  
OBTAINED WITHOUT THE EXPRESSED WRITTEN  
CONSENT OF SAMTEC, INC.

MATERIAL: DO NOT SCALE DRAWING  
SHEET SCALE: 5:1  
SHELL: BRASS C3604B  
BODY: BRASS C3604B  
INSULATOR: PTFE (WHITE)  
SOCKET: BeCu C17300

**samtec**

520 PARK EAST BLVD, NEW ALBANY, IN 47150  
PHONE: 812-944-6733 FAX: 812-948-5047  
e-Mail: info@SAMTEC.com code: 55322

DESCRIPTION:  
MCX RIGHT ANGLE, THROUGH HOLE JACK- 50 OHM

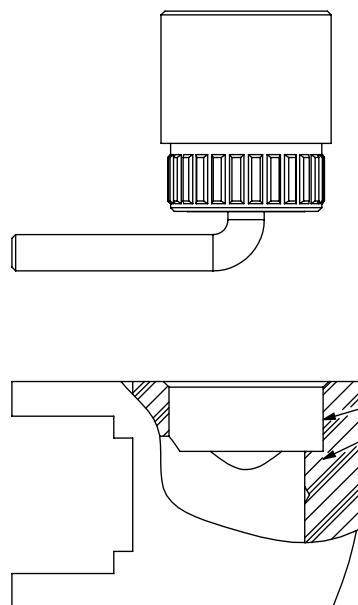
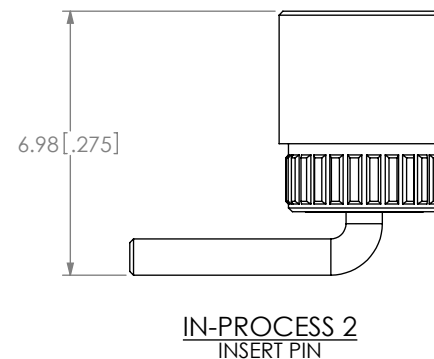
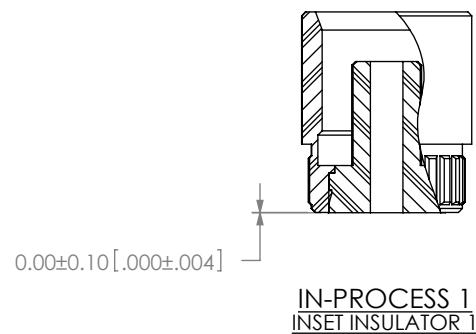
DWG. NO.

MCX-J-P-X-RA-TH1

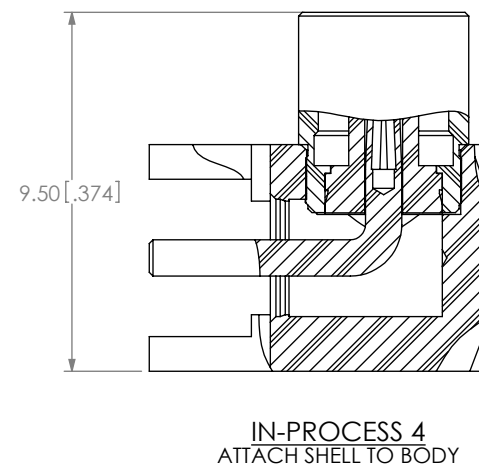
BY: R MUSSER

02/06/2008

SHEET 1 OF 2



ADD ADHESIVE AROUND ENTIRE CIRCUMFERENCE. USE LOCTITE 638 RETAINING COMPOUND.



**PROPRIETARY NOTE**

THIS DOCUMENT CONTAINS INFORMATION CONFIDENTIAL AND PROPRIETARY TO SAMTEC, INC. AND SHALL NOT BE REPRODUCED OR TRANSFERRED TO OTHER DOCUMENTS OR DISCLOSED TO OTHERS OR USED FOR ANY PURPOSE OTHER THAN THAT WHICH IT WAS OBTAINED WITHOUT THE EXPRESSED WRITTEN CONSENT OF SAMTEC, INC.

DO NOT SCALE DRAWING

SHEET SCALE: 5:1

**samtec**

520 PARK EAST BLVD, NEW ALBANY, IN 47150  
PHONE: 812-944-6733 FAX: 812-948-5047  
e-Mail: info@SAMTEC.com code: 55322

DESCRIPTION:  
MCX RIGHT ANGLE, THROUGH HOLE JACK- 50 OHM

DWG. NO.  
**MCX-J-P-X-RA-TH1**

BY: R MUSSER 02/06/2008 SHEET 2 OF 2