

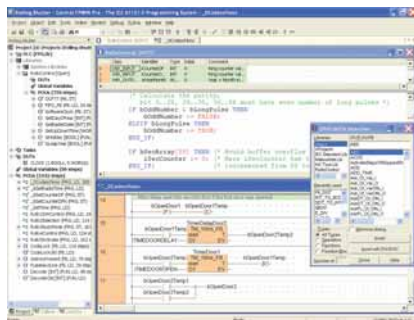
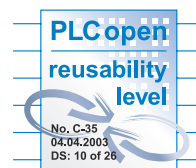
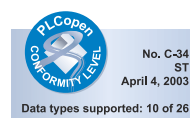
# Programming

Programmable  
Controller **FP-X**

Note: Product names and company names in this chart are trademarks or registered trademarks of the respective companies.

## Control FPWIN Pro (IEC61131-3 compliant Windows version software)

Compliant with international standard IEC61131-3  
Programming software approved by PLC Open



### ■ Features

#### 1. Five programming languages can be used.

Programming can be done using the language most familiar to the developer or using the language most suited to the process to be performed. High-level (structured text) languages that allow structuring, such as C, are supported.

#### 2. Easy to reuse well-proven programs

Efficiency when writing programs has been greatly increased by being able to split programming up for each function and process using structured programming.

#### 3. Keep know-how from getting out

By "black boxing" a part of a program, you can prevent know-how from leaking out and improve the program's maintainability.

#### 4. Conversion function for previously written programs provided to allow use of program assets.

#### 5. Uploading of source programs from PLC possible.

Maintainability increased by being able to load programs and comments from the PLC.

\* This only applies to FP-X, FPΣ and FP2 (with comment memory) and to FP2SH and FP10SH (with card board).

#### 6. Programming for all models in the FP series possible.

Any model can be used.

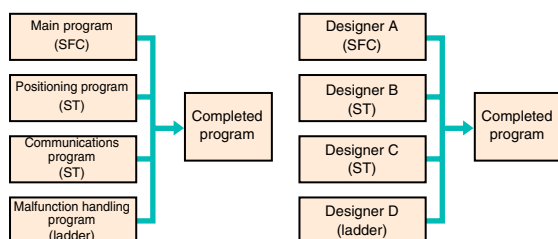
### ■ Programming in the most suitable language

#### ● Programming in the language most suited to the process

Easy-to-understand, efficient programs can be created, for example, by using a ladder program for machine control or ST for communications control.

#### ● Programming in the language you are good at

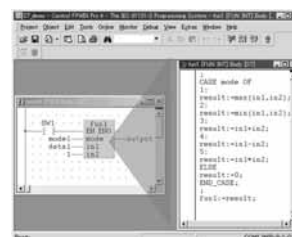
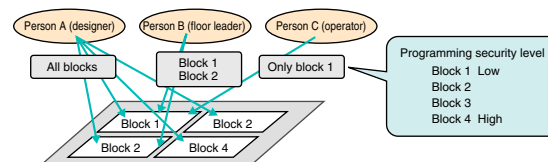
Programming time can be greatly reduced by the easy ability to split and then integrate programming for each function and process.



### ■ "Black boxing" of programs

#### ● Multiple passwords for protection of each block

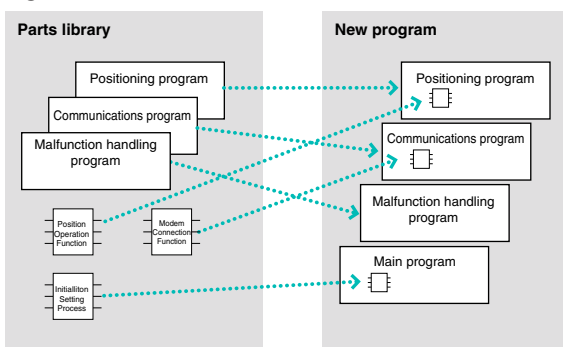
The security level (8 levels) can be input for each block in a program. Only users of a set security level or higher can make changes.



### ■ Reuse of programs is easy.

#### ● Register time-proven programs by block in the library.

#### ● By using variable identifiers (names), there is no need to be concerned with addresses for each machine when reusing programs.



### ■ Operational Environment

OS	Windows95 (OSR2 or higher)/98/Me/NT (Ver. 4.0 or later)/2000/XP
Hard disk capacity	At least 100 MB
CPU	Pentium 100 MHz or higher
Onboard memory	At least 64 MB (depends on OS)
Screen resolution	At least 1024 × 768
Display colors	High Color (16-bit) or higher
Applicable PLC	FP-X/FP-e/FP0/FPΣ/FP1/FP-M/FP2/FP2SH/FP3/FP10SH
Compatible FP-X version	Relay output type: Ver.5.1 and after Transistor output type: Ver.5.3 and after