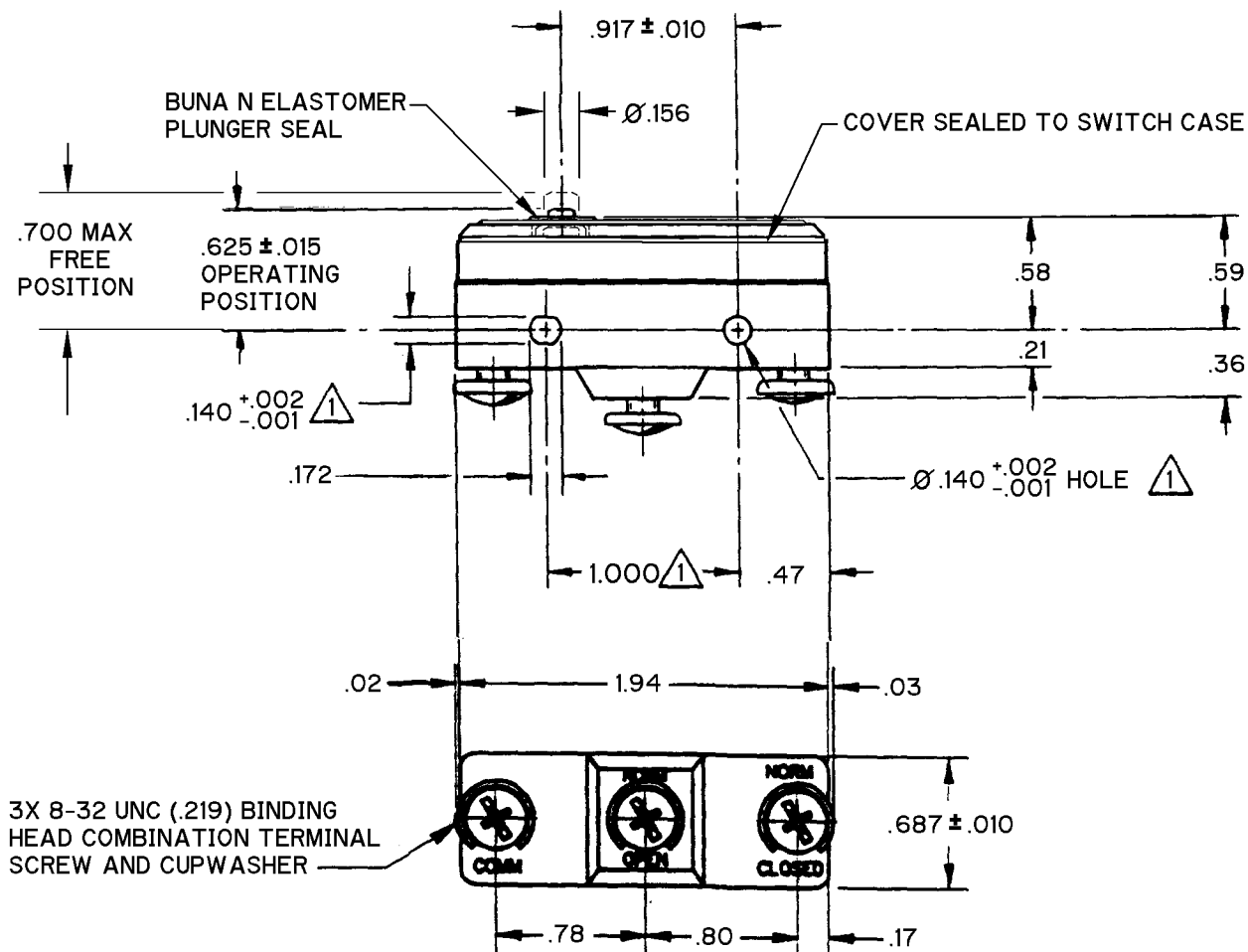


CATALOG LISTING
BM-2R559729-A4
 PAGE 1 OF 1
M
 ISSUE 2
 REVISIONS
 A 0035413
 JA 07DEC07
 CHECK ASD 07DEC07
 CHECK J A F 1 JUL 98
 CHECK J A S 30 JUN 98
 DRAWN RASTER



ANSI Y14.5M-1982 APPLIES

THIS DRAWING COVERS A PROPRIETARY ITEM AND IS THE PROPERTY OF MICRO SWITCH, A DIVISION OF HONEYWELL. THIS DRAWING IS NOT TO BE COPIED OR USED WITHOUT THE APPROVAL OF MICRO SWITCH.

THIRD ANGLE PROJECTION

CHARACTERISTICS

OPERATING FORCE ----- 15 - 25 OZ
 RELEASE FORCE ----- 8 OZ MIN
 DIFFERENTIAL TRAVEL ----- .003 MAX
 OVERTRAVEL ----- .005 MIN

ELECTRICAL DATA

CONTACT ARRANGEMENT
 S P D T

22A 125, 250 OR 277 VAC
 3/4 HP 125 VAC, 1 1/2 HP 250 VAC

L288
 L315
 L318

22A 250V ~ T85 5E4

SCALE FULL

DO NOT SCALE PRINT

TOLERANCES
 APPLY TO DESIGN UNITS. CONVERSIONS ARE ONLY FOR REFERENCE. UNLESS NOTED, TOLERANCES ARE ±

NO PLACES	ONE PLACE	TWO PLACES	THREE PLACES	ANGLES
X	X.X	X.XX	X.XXX	X.XXX
1/100	0.1/0.010	0.10/0.001	0.10/0.001	0.10/0.001
1/100	0.1/0.010	0.10/0.001	0.10/0.001	0.10/0.001

SI METRIC
 DESIGN UNITS ☐ US CUSTOMARY ☒

WEIGHT .050 LB

Mouser Electronics

Authorized Distributor

Click to View Pricing, Inventory, Delivery & Lifecycle Information:

[Honeywell:](#)

[BM-2R559729-A4](#)