

LETTER	ENGINEERING CHANGE ORDER NO.	DATE	APPROVED
A	ECN # 08898	10-28-02	BB / PC

"PREMADE FD"

5	12	HA2137-06-5010	#10-32 X 3/8 LG. PHILLIPS P.H.M.S.					
4	4	HA2112-06-5014	#10-32 X 1/2 LG. 82° PHILLIPS F.H.M.S.					
3	4	HA2350-06-1007	#10-32 KEPS NUT					
2	6	CAB056-06-0017	BAR NUT					
1	2	CB8060-06-K001	BRACKET					
NO.	REQ'D	PART NUMBER	DESCRIPTION	SIZE	MATERIAL	AMOUNT		
CADMIUM PLATE & YELLOW IRR. DIP			DO NOT SCALE DRAWING	COMMERCIAL TOLERANCES APPLY TO STOCK SIZES				
CADMIUM PLATE & BRIGHT DIP			DIMENSIONS ARE IN INCHES	TOLERANCES				
ZINC PLATE & YELLOW IRR. DIP			NO FINISH	.XX ±.02 .XXX ±.005 ANGLES ±1/2°				
ZINC PLATE & BRIGHT DIP			BLACK	A DIVISION OF GENERAL DEVICES INC. P.O. BOX 39100 INDIANAPOLIS, IND. 46239				
POXYLUBE UNDER WAX			NICKEL PLATE	DESCRIPTION		PREMADE HARDWARE PACKAGE		
ZINC & YELLOW UNDER POXYLUBE			SILVER PLATE	DRAWN BY		G. MARTIN		
CAD & YELLOW UNDER POXYLUBE			SEE PIECE PART	CHECKED BY		JML		
POXYLUBE			OTHER	DRAWING NO. (OLD)		PART NUMBER		
			FINISH	NEXT ASSEMBLY		CAB600-PM-0001		



**CHASSIS TRAK**

Electronic Slide Mechanisms

A DIVISION OF GENERAL DEVICES INC. P.O. BOX 39100 INDIANAPOLIS, IND. 46239

PREMADE HARDWARE PACKAGE

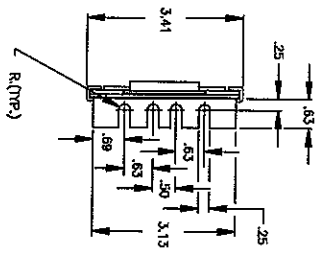
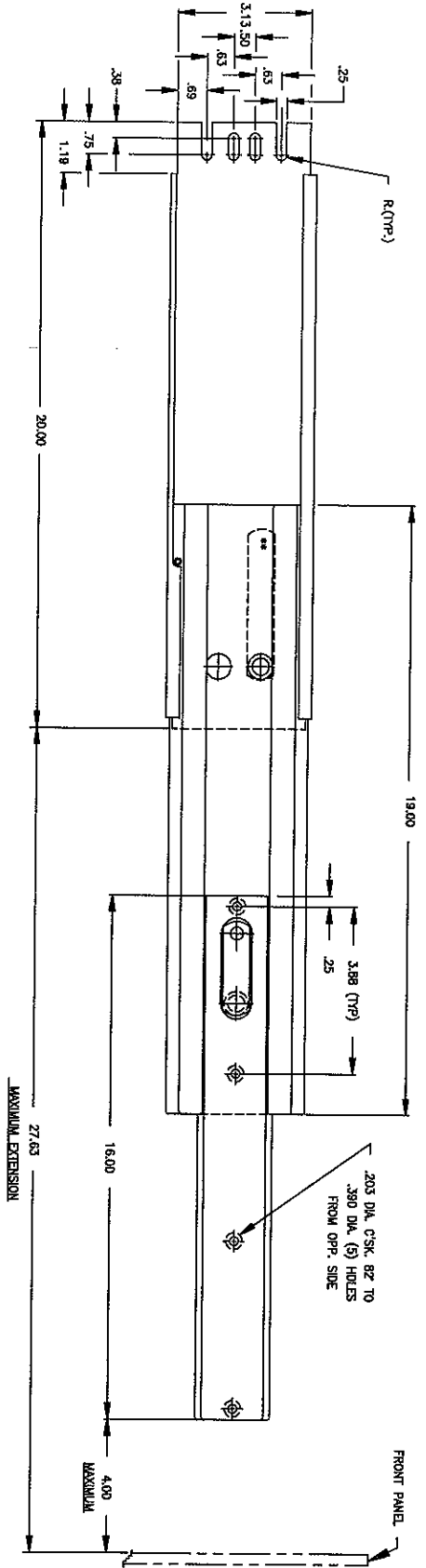
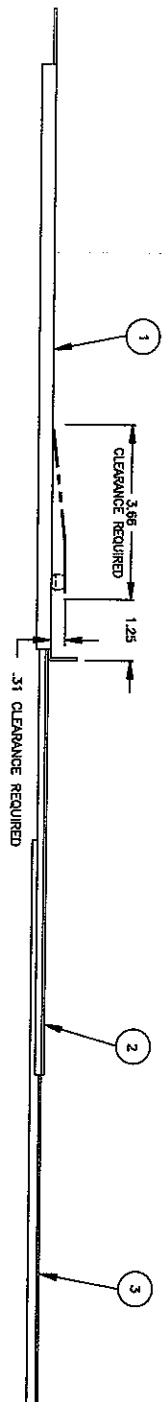
DRAWN BY G. MARTIN

CHECKED BY JML

DRAWING NO. (OLD)

PART NUMBER CAB600-PM-0001

LETTER	ISSUING CHANGE ORDER NO.	DATE	APPROVED
B	EDN #08937	11/9/08	PLS DAF



- NOTES:
- (1) CC1001-99-0058 CONSISTS OF THE FOLLOWING:
    - (1) CC1001-00-R200 (R.H. SLIDE ASSEMBLY)
    - (1) CC1001-00-L200 (L.H. SLIDE ASSEMBLY)
    - (1) C08609-99-0037 (HARDWARE PACKAGE)
  - (2) PACKAGE (1) PAIR + HARDWARE IN #18 BOX.

HEWLETT PACKARD  
REF. NO. 1490-0870-1

NO.	QTY	RECD	PART NUMBER	DESCRIPTION	SIZE	MATERIAL	AMOUNT
3	1		CC1141-00-0180	CHASSIS SECTION ASSEMBLY			
2	1		CC1123-00-R200	INTERMEDIATE SECTION			
1	1		CC1101-00-R200	STATIONARY SECTION ASSEMBLY			
3	1		CC1141-00-0180	CHASSIS SECTION ASSEMBLY			
2	1		CC1123-00-L200	INTERMEDIATE SECTION			
1	1		CC1101-00-L200	STATIONARY SECTION ASSEMBLY			

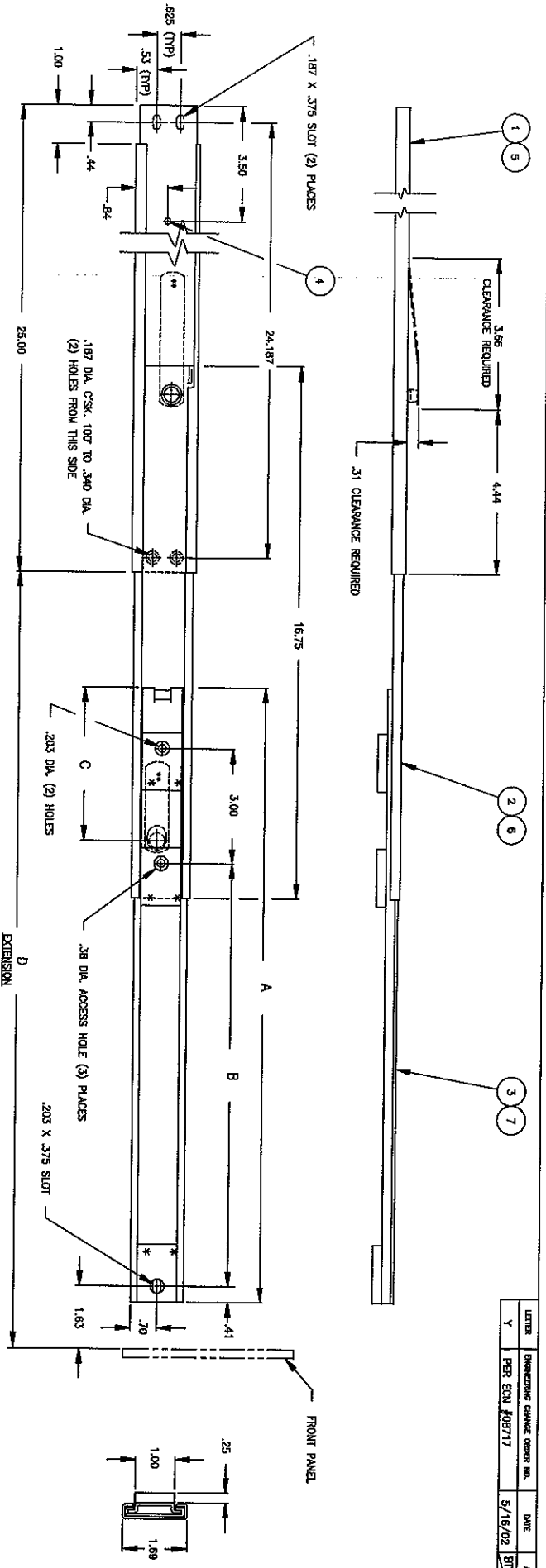
  

NO. RECD	PART NUMBER	DESCRIPTION	DO NOT SCALE DRAWING	COMMERCIAL TOLERANCES APPLY TO STOCK SIZES
1	CC1101-00-R200	STATIONARY SECTION ASSEMBLY	NO FINISH	XX 4.02 203 DIA. CSK. B2 TO .390 DIA. (5) HOLES 41/2
1	CC1141-00-0180	CHASSIS SECTION ASSEMBLY	NO FINISH	
1	CC1123-00-R200	INTERMEDIATE SECTION	NO FINISH	
1	CC1123-00-L200	INTERMEDIATE SECTION	NO FINISH	
1	CC1101-00-R200	STATIONARY SECTION ASSEMBLY	NO FINISH	
1	CC1101-00-L200	STATIONARY SECTION ASSEMBLY	NO FINISH	

FINISH	Y	OTHER	
NEXT ASSEMBLY			
DESIGNED BY	DAK	CHECKED BY	DAK
DATE	7-13-87	PART NUMBER	CC1001-99-0058





LETTER	DRAWING CHANGE ORDER NO.	DATE	APPROVED
Y	PER ECN #80717	5/18/92	BT / DG

- NOTES:**
- (1) RIGHT HAND SLIDE SHOWN, LEFT HAND SLIDE OPPOSITE.
  - (2) CC3001-99-0033 CONTAINS (1) RIGHT HAND SLIDE ASSEMBLY, (1) LEFT HAND SLIDE ASSEMBLY, AND ALL OF THE HARDWARE NECESSARY TO MOUNT THE SLIDES TO THE CABINET, AND THE CHASSIS BOX TO THE SLIDES.
  - (3) CC3001-99-0034 CONTAINS (1) RIGHT HAND SLIDE ASSEMBLY, (1) LEFT HAND SLIDE ASSEMBLY, AND ALL OF THE HARDWARE NECESSARY TO MOUNT THE SLIDES TO THE CABINET, AND THE CHASSIS BOX TO THE SLIDES.
  - (4) FINISH: STATIONARY SECTION ZINC PLATE AND BRIGHT DIP, INTERMEDIATE AND CHASSIS SECTIONS POLYURLE.
  - (5) INSTALL ITEM 4 AFTER STATIONARY AND INTERMEDIATE SECTIONS ARE ASSEMBLED.

C-T P/N	A	B	C	D	E
CC3002-99-0033	21.00	17.00	3.00	27.84	CC3331-99-R074
CC3002-99-0034	16.00	11.00	4.00	21.84	CC3331-99-R075

**HEWLETT PACKARD**

NO.	REV'D	PART NUMBER	DESCRIPTION	SIZE	MATERIAL	AMOUNT
8	1	C06900-99-0046	MODIFIED HARDWARE PACKAGE			
7	1	E	CHASSIS SECTION ASSEMBLY			
6	1	OB3323-99-L051	INTERMEDIATE SECTION			
5	1	OB3302-99-L027	STATIONARY SECTION ASSEMBLY			
4	2	046190-11-0008	STOP PIN			
3	1	E	CHASSIS SECTION ASSEMBLY			
2	1	OB3302-99-R0351	INTERMEDIATE SECTION			
1	1	OB3302-99-R027	STATIONARY SECTION ASSEMBLY			

**COMMERCIAL TOLERANCES APPLY TO STOCK SIZES**

DO NOT SCALE DRAWING  
DIMENSIONS ARE IN INCHES  
NO FINISH

**CHASSIS TRAK**  
Electrolex Slide Mechanisms  
A DIVISION OF GENERAL INSTRUMENTS INC. P.O. BOX 6000 BOSTON, MASS 02119

DESIGNED BY: G. MARTIN  
CHECKED BY: JML  
DATE: 6-3-88  
PART NUMBER: CC3002-99-0034

FINISH: POLYURLE UNDER MASK / ZINC & YELLOW UNDER POLYURLE / ZINC & YELLOW UNDER POLYURLE / FRONT SURF  
NEXT ASSEMBLY: RIM