

## RGBX lenses for Cree's MC-E series of LEDs



- Specially designed for Cree's MC-E series of LEDs.
- Special care taken to make a uniform RGB, white or warm white illumination.
- Lens material optical grade PMMA. Allows use of high current and temperature conditions
- Best available optical efficiency, up to 90%.

## LENS TYPES

| NAME                | ORDERING CODE      | FWHM Angle                   |
|---------------------|--------------------|------------------------------|
| RGBX-MC Smooth Spot | CA10961_RGBX-MC-SS | $\pm 7.8^\circ$              |
| RGBX-MC Medium      | CA10944_RGBX-MC-M  | $\pm 13^\circ$               |
| RGBX-MC Oval        | CA10945_RGBX-MC-O  | $\pm 24 \times \pm 16^\circ$ |

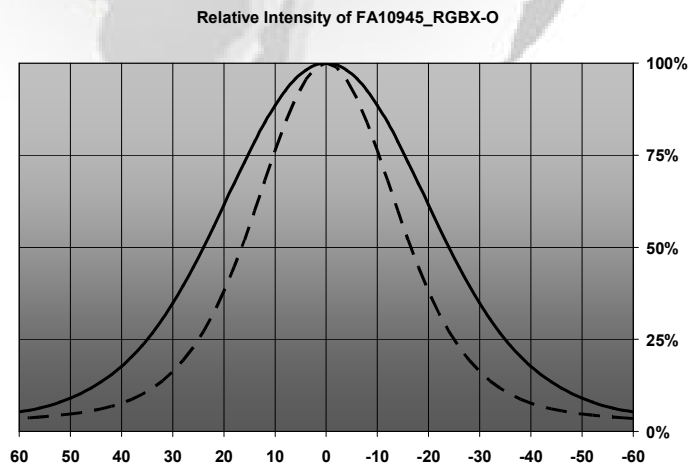
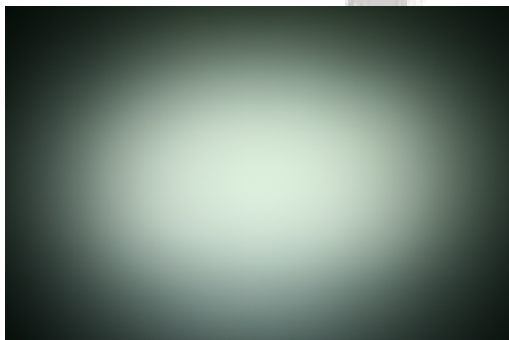
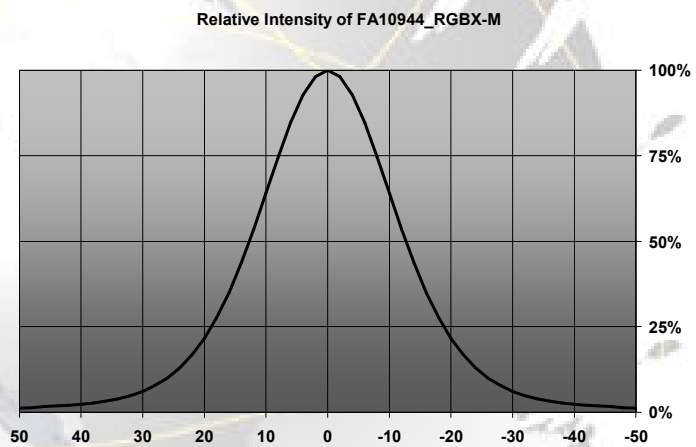
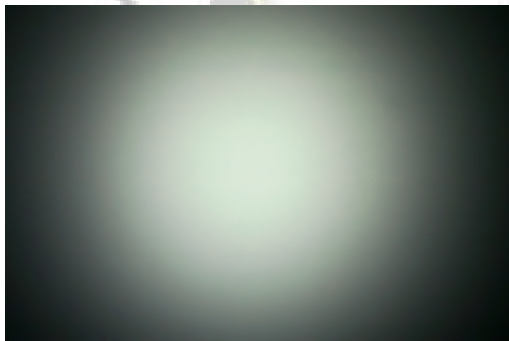
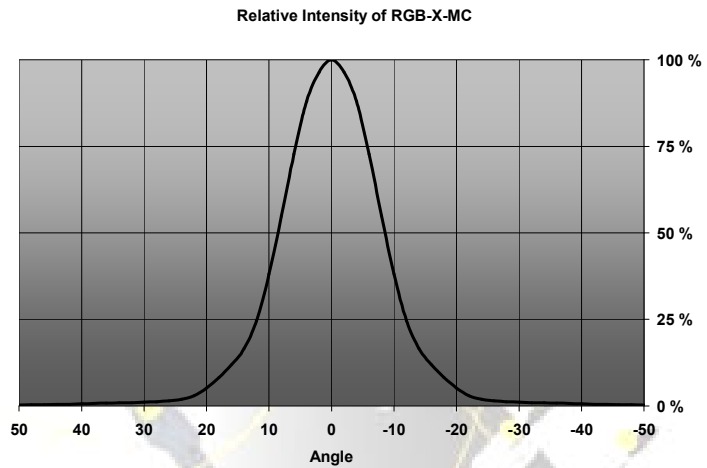
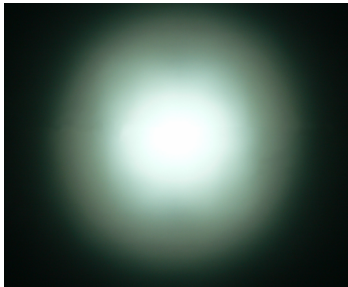
**SMOOTH SPOT** lens is a pure collimator lens with no good color mixing properties. SMOOTH SPOT lens is recommended for white light applications or color applications where maximum light intensity is needed.

**MEDIUM** lens is optimal for cases where a pleasant, medium-type spotlight distribution with uniform color mixing is wished.

**OVAL** lens is optimal for cases where an oval beam with good color mixing is wished.

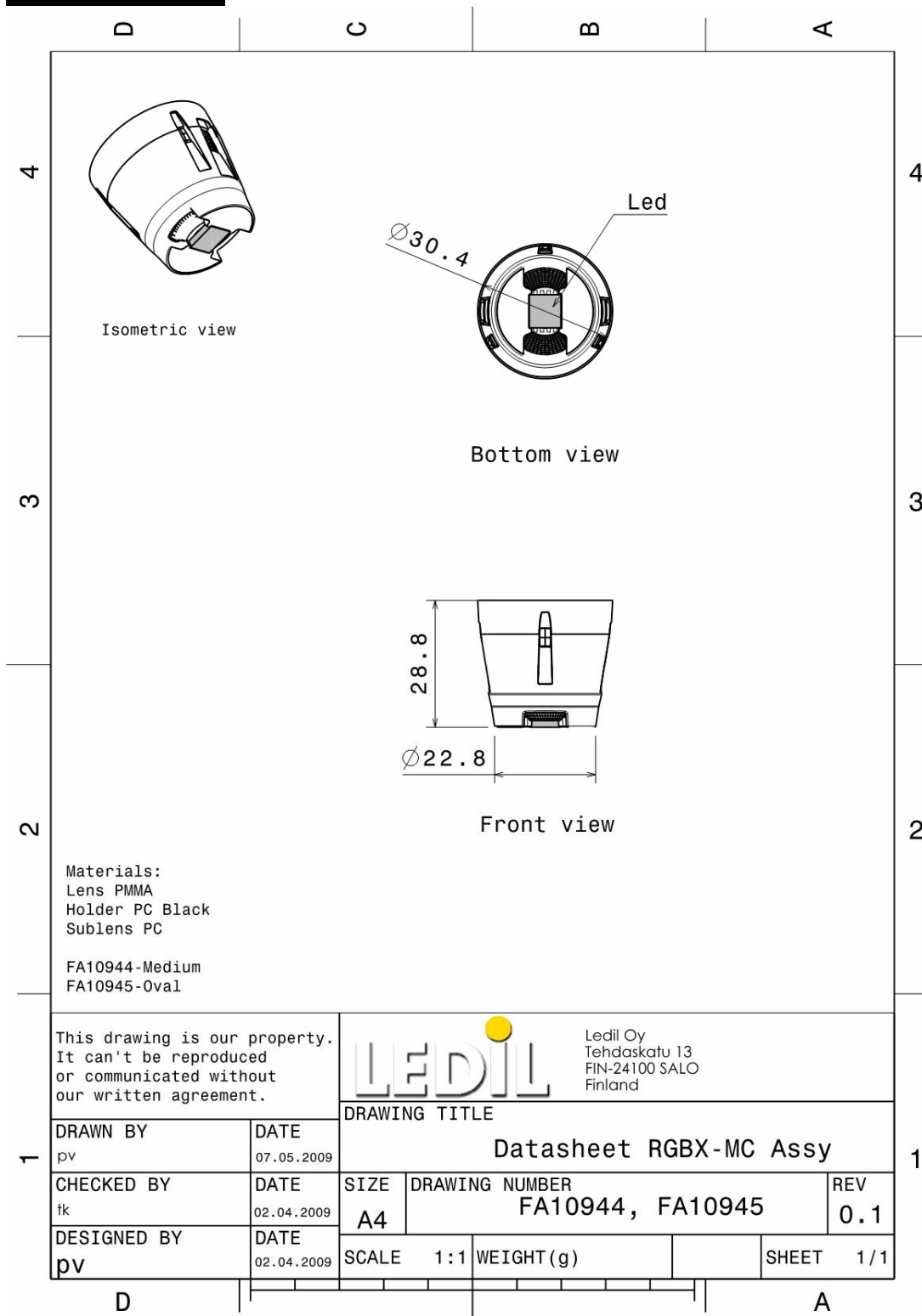
© Ledil Oy – PRELIMINARY - Subject to change without prior notice

## MEASUREMENT DATA



© Ledil Oy – PRELIMINARY - Subject to change without prior notice

## DRAWINGS



© Ledil Oy – PRELIMINARY - Subject to change without prior notice