

DESCRIPTION

The Valet LED luminaire features rugged, low-profile construction incorporating patent pending, modular LED LightBAR™ technology. Through superior optical control, Valet delivers uniform and energy-conscious illumination optimized to improve vehicular movement in tunnel and underpass applications. UL/cUL listed for wet locations. IP66 and 3G vibration rated.

| Catalog # | | Type |
|-------------|--|------|
| Project | | |
| Comments | | Date |
| Prepared by | | |

SPECIFICATION FEATURES

Construction

One-piece, low copper, die-cast aluminum housing features heavy wall construction for superior heat transfer and resistance to corrosion. Formed aluminum faceplate is secured via four (4) stainless steel fasteners, and is recessed for clean mating of door and housing. Optional tamperproof Torx™-head fasteners offer vandal resistant access to the electrical compartment.

Optics

Choice of six (6) patented, high-efficiency AccuLED Optics™ manufactured from injection-molded acrylic. Optics are precisely designed to shape the distribution, maximizing efficiency and application spacing. Optional GL optics internally shield the drive lane and pedestrians from direct source viewing. Offered standard in 4000K (+/- 275K) CCT and nominal 70 CRI.

Electrical

LED drivers mount to die-cast aluminum back casting for optimal heat sinking and operation efficiency. 120-277V 50/60Hz, 347V 60Hz or 480V 60Hz operation. Shipped standard with Cooper Lighting proprietary circuit module designed to withstand 10kV of transient line surge. 50,000 + hour life with >70% lumen maintenance. The Valet LED luminaire is suitable for operation in -30°C to 40°C ambient environments. LightBARs and fixture are IP66 rated.

Mounting

Fixture mounts to a square or octagonal 4" surface or recessed J-box via heavy gauge painted quick mount box. Single carton packaging of housing and quick mounting box for contractor friendly arrival of product to site. Optional mounting methods include rigid or free-swinging 3/4" pendant including bird guard, trunnion mount, wall mount and direct lag surface mount.

Finish

Cast components and mounting box finished in a Super TGIC polyester powder coat paint, 2.5 mil nominal thickness for superior protection against fade and wear. Standard colors include black, bronze, grey, white, dark platinum, and graphite metallic. RAL and custom color matches available.

Warranty

Five-year limited warranty.



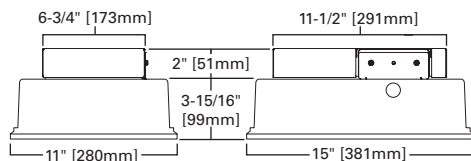
VAL VALET LED TUNNEL

1 - 4 LightBARs
Solid State LED

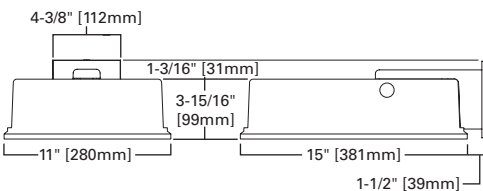
TUNNEL / UNDERPASS / PARKING
GARAGE
TRUNNION / WALL / PENDANT
MOUNT

MOUNTING METHODS

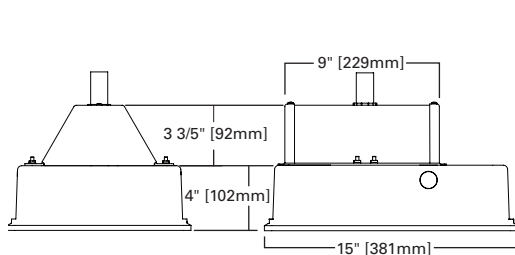
J-Box Mount



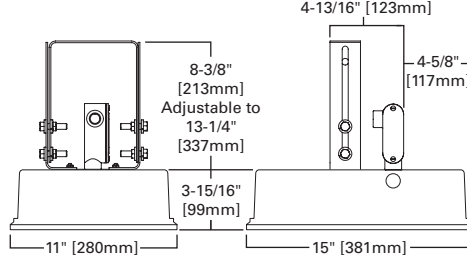
Wall Mount (WM)



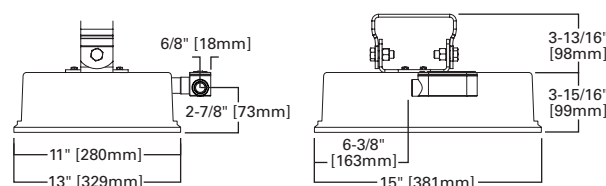
Pendant Box / Bird Guard (PBG)



Trunnion Mount (TMB) for Wall and Ceiling



Short Trunnion Mount (STMB) for Wall and Ceiling



DESIGNLIGHTS
CONSORTIUM

CERTIFICATION DATA

UL/cUL Listed
LM79 / LM80 Compliant
ARRA Compliant
ISO 9001
IP66 Rated
3G Vibration Rated

ENERGY DATA

Electronic LED Driver
>0.9 Power Factor
<20% Total Harmonic Distortion
120-277V/50 & 60hz, 347V/60hz,
480V/60hz
-30°C Minimum Temperature
40°C Ambient Temperature Rating
50°C (Optional) Ambient Temperature
Rating

SHIPPING DATA

Approximate Net Weight:
16 lbs. (8 kgs.)

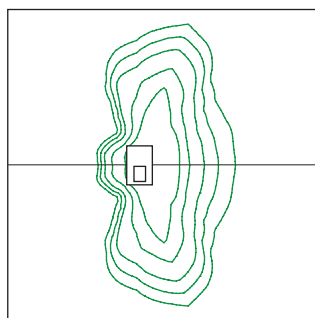
POWER AND LUMENS BY BAR COUNT

| Number of LightBARs | DISTRIBUTION | | | | | | | | |
|------------------------|---------------|--------------------|--------------------|-------|-------|-------|-------|-------|-------|
| | Power [Watts] | Current @ 120V [A] | Current @ 277V [A] | GL2 | GL3 | GL4 | CSQ | 5SQ | WSQ |
| 7 LED LIGHTBAR | | | | | | | | | |
| C01 | 27 | 0.23 | 0.13 | 1,869 | 1,895 | 1,842 | 1,959 | 1,929 | 1,965 |
| C02 | 54 | 0.46 | 0.21 | 3,708 | 3,761 | 3,655 | 3,886 | 3,827 | 3,899 |
| C03 | 77 | 0.65 | 0.29 | 5,463 | 5,540 | 5,384 | 5,725 | 5,638 | 5,744 |
| C04 | 101 | 0.86 | 0.37 | 7,266 | 7,369 | 7,161 | 7,615 | 7,499 | 7,640 |
| 21 LED LIGHTBAR | | | | | | | | | |
| B01 | 27 | 0.23 | 0.13 | 2,299 | 2,331 | 2,266 | 2,409 | 2,373 | 2,417 |
| B02 | 51 | 0.43 | 0.20 | 4,561 | 4,625 | 4,495 | 4,780 | 4,707 | 4,796 |
| B03 | 73 | 0.62 | 0.28 | 6,719 | 6,814 | 6,622 | 7,042 | 6,935 | 7,065 |
| B04 | 95 | 0.81 | 0.35 | 8,938 | 9,064 | 8,808 | 9,366 | 9,224 | 9,397 |

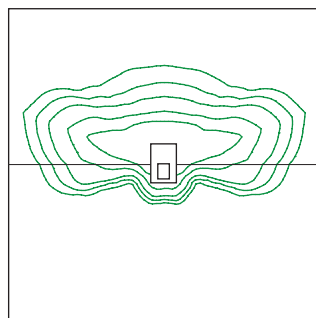
LUMEN MULTIPLIER

| Ambient Temperature | Lumen Multiplier |
|---------------------|------------------|
| 10°C | 1.04 |
| 15°C | 1.03 |
| 25°C | 1.00 |
| 40°C | 0.96 |
| 50°C | 0.92 |

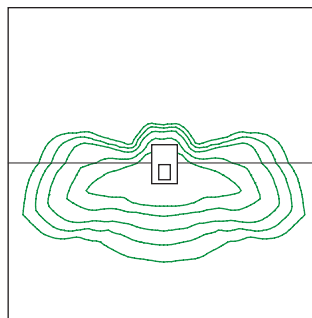
OPTIC ORIENTATION



Standard



Optics Rotated Left @ 90° [L90]



Optics Rotated Right @ 90° [R90]

ORDERING INFORMATION

SAMPLE NUMBER: VALB02LEDEUGL2APSTMB

| VAL | | LED | | | | | | |
|---|--|---|--|---|--|---|--|---|
| Product Family VAL=Valet LED Tunnel / Underpass Luminaire | | Lamp Type LED=Solid State Light-Emitting Diodes | | | | | | |
| Number of LightBARs ^{1,2} B01=(1) 21 LED LightBAR ³ B02=(2) 21 LED LightBARs B03=(3) 21 LED LightBARs B04=(4) 21 LED LightBARs C01=(1) 7 LED LightBAR ³ C02=(2) 7 LED LightBARs C03=(3) 7 LED LightBARs C04=(4) 7 LED LightBARs | | Ballast Type E=Electronic | | Distribution GL2=Type II w/ Glare Control GL3=Type III w/ Glare Control GL4=Type IV w/ Glare Control CSQ=Concentrated Type V Square 5SQ=Type V Square WSQ=Wide Type V Square | | Options ⁴ 2L=Two Circuit ⁵ HA=50°C High Ambient Temperature Rating ⁶ L90=Optics Rotated 90° Left R90=Optics Rotated 90° Right TR=Tamper Resistant Fasteners SM=Surface Mount ⁷ 7060=70 CRI/6000K CCT ⁸ 8030=80 CRI/3000K CCT ⁸ LCF=LightBAR Cover Plate Matches Housing Finish ICP=Integral Cold Weather Battery Pack (Specify 120V or 277V) ^{9,10} OSX=Integral Occupancy Sensor PBG=Pendant Box/Bird Guard ⁶ STMB=Short Trunnion Mount for Wall and Ceiling, with LB Connector (Some assembly required) TMB=Trunnion Mount for Wall and Ceiling with LR Connector (Some assembly required) WM=Wall Mount | | Accessories ¹¹ MA1253=10kV Circuit Module Replacement |
| | | Voltage U=Electronic (120-277V) 8=480V 9=347V | | Finish AP=Grey BZ=Bronze BK=Black DP=Dark Platinum GM=Graphite Metallic WH=White | | | | |

NOTES:

- Standard 4000K CCT and nominal 70CRI.
- 21 LED LightBAR powered at 350mA, 7 LED LightBAR powered at 1A.
- Not available w/ 2L Bi-level switching option.
- Add as suffix.
- Not available in 347V or 480V. Available in models with B02 or C02, B03 or C03, and B04 or C04. Low-Level output varies by bar count specified. Consult Factory.
- Not available in models with B04 or C04.
- Surface mount configuration limited to 25°C ambient conditions.
- Consult Factory for lead times and lumen multiplier.
- Available with B01 and C01 configurations only. Rated for 25°C ambient operating temperature.
- Must specify voltage.
- Order separately.

DesignLights™ Consortium Qualified. Refer to www.designlights.org Qualified Products List under Family Models for details.

NOTE: Specifications and dimensions subject to change without notice.

Visit our web site at www.cooperlighting.com

Customer First Center 1121 Highway 74 South Peachtree City, GA 30269 770.486.4800 FAX 770.486.4801

ADW111876

2012-12-19 15:25:42