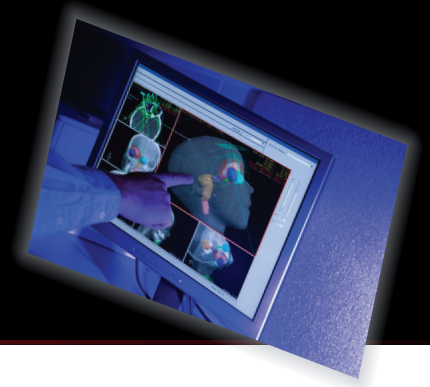
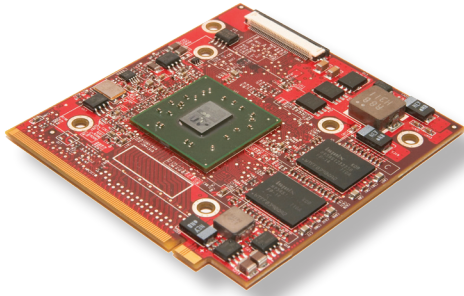


ATI Radeon™ E2400 MXM-II Module



Fast Time-to-Market for Low-Profile Environments



→ High Performance Graphics

- 3DMark05 performance up to 4061
- 256MB GDDR3 memory

→ Extended Availability

- 5 year supply availability*
- Dedicated technical support

Small Graphics Module with a Simple Connector Interface

The ATI Radeon™ E2400 MXM-II Module delivers high-performance graphics in a small graphics module that is simple to add to a motherboard design. Based on the open standard MXM 2.1a board specification, the E2400 MXM-II Module is ideal for low-profile, space-constrained environments. Built using 65nm process technology, the ATI Radeon E2400 MXM-II Module offers exceptional performance with the flexibility to adjust clock settings to reduce power consumption as needed.

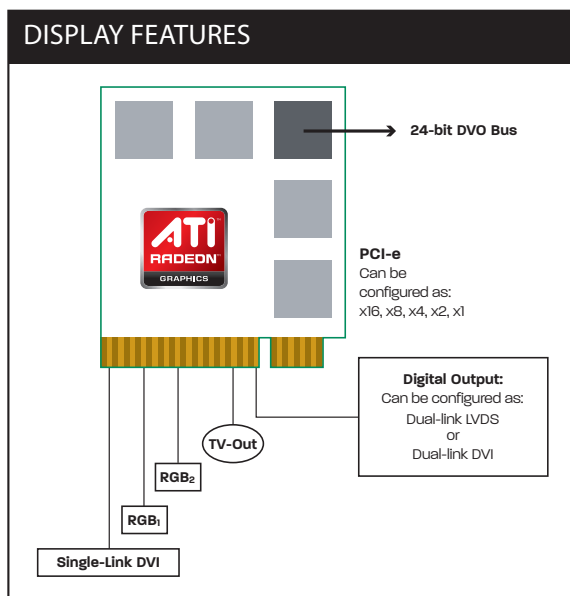
Highly Flexible Display Architecture

On board is a high-performance graphic processing unit that delivers exceptional 2D, 3D, and multimedia graphics performance for embedded systems. With two independent display controllers, the ATI Radeon E2400 MXM-II Module offers a highly flexible display architecture, which includes integrated dual-link DVI, LVDS, dual-RGB, and HD TV-Out. A built in Unified Video Decoder enables on-GPU H.264 and VC-1 decode.

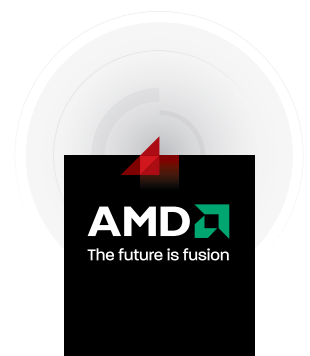
The ATI Radeon E2400 MXM-II Module fully supports Microsoft® DirectX® 10.0 and OpenGL 2.0. This can help customers develop richer, visually appealing content for their embedded applications, with the confidence that their graphics requirements can be met for the entire long life product lifecycle.

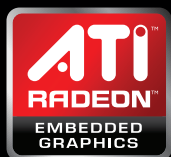
Committed to Embedded Solutions

Building on a proven track record of customer-centric innovation, AMD recognizes the longer product lifecycle requirements of the embedded market. The five-year longevity of the E2400 MXM-II Module is offered specifically to bring exciting new possibilities for embedded display solutions and can help eliminate barriers to the adoption of advanced graphics. A flexible architecture along with specialized technical support create an opportunity for system designers to develop innovative solutions with fast time-to-market.



* Part availability is planned for 5 years from date of announcement, subject to change without notice.





E2400 MXM Product Overview	
Product Specifications	
Package Dimensions	73mm x 78mm
Process	65nm
Graphics Engine Clock Scalable up to:	600MHz
Memory Clock Scalable up to:	700MHz
Memory Size and Type	256MB GDDR3
Memory Interface	64-bit
PCI-Express Generation	1.1
PCI-Express Supported Lane Widths	x16, x8, x4, x2, x1
Display Interfaces	
Integrated Dual-Link DVI	1 Output
Integrated Single-Link DVI	1 Output
Integrated Dual-Link LVDS	1 Output
Integrated CRT	2 triple-10-bit Outputs
Integrated TV-Out	1 Output to NTSC or PAL
Integrated DVO Port	12-bit DDR/ 24-bit SDR Output
Display Specifications	
Maximum DAC Speed	400MHz
Maximum Single-Link TMDS Resolution	UXGA
Maximum Dual-Link TMDS Resolution	QXGA
Maximum Pixel Clock Rate per TMDS Link	165MHz
Maximum Single-Link LVDS Resolution	SXGA
Maximum Dual-Link LVDS Resolution	QXGA
Maximum HDMI Resolution	1920 x 1080 (Full HD)
Supported YPbPr Outputs	480i, 480p, 576i, 576p, 720p
Multi-Display Configurations	
Dual Independent Display Support	Yes
	CRT + CRT
	Dual-Link LVDS + CRT
	Dual-Link LVDS + Single-Link DVI
	Dual-Link DVI + Single-Link DVI
	Single-Link DVI + CRT
	Dual-Link DVI + CRT
	Dual-Link DVI + External Dual-Link DVI (Through DVO Port)
Features	
Integrated Spread Spectrum for LVDS	Yes
Integrated Spread Spectrum for Memory CLK	Yes
Internal Thermal Sensor	Yes
Universal Video Decoder	H.264; VC-1
SW Support	
Windows XP Embedded	Yes
Windows XP	Yes
Windows Vista	Yes
Windows DirectX® Support	DirectX® 10.0
Windows OpenGL® Support	OpenGL® 2.0
Linux (x86)	Yes

Contact your local AMD distributor for ordering information:
OPN: 100-K00118

© Copyright 2009, Advanced Micro Devices, Inc. All rights reserved. AMD, the AMD arrow logo, ATI, the ATI logo, Radeon, and combinations thereof are trademarks of Advanced Micro Devices, Inc. All other company and/or product names are for informational purposes only and may be trademarks and/or registered trademarks of their respective owners.