



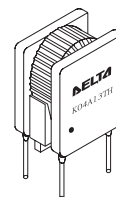
THROUGH-HOLE TYPE Common-Mode Choke

FEATURES

- High performance and low cost
- Compact size for easy mounting on the boards
- Enable common-mode noise suppression without influence video signals

APPLICATIONS

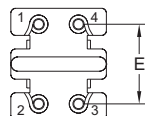
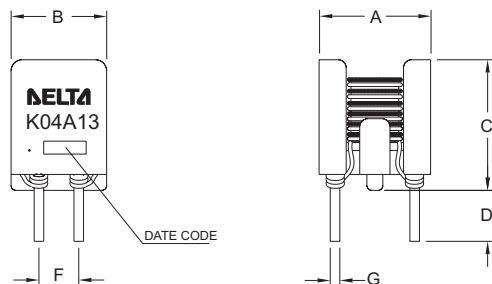
- EMI countermeasures at signal lines of personal computers, microcomputers, peripheral devices, etc.
- To suppress common-mode noise at composite video signals



ELECTRICAL CHARACTERISTICS @25°C

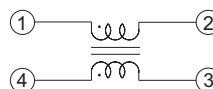
PART NO.	Inductance (μ H)	DC Resistance (m Ω) Max	Isolation Resistance (M Ω) Min	Rated current (A) Max
			@ 100 VDC	
CMK04A13TH	42 \pm 35%	55	10	0.5

MECHANICAL CONSTRUCTION

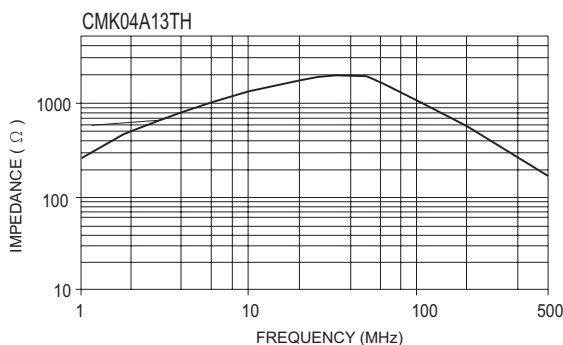


UNIT : mm / inch
 A = 7.10 \pm 0.254 / 0.280 \pm 0.010
 B = 6.10 \pm 0.254 / 0.240 \pm 0.010
 C = 9.10 \pm 0.254 / 0.358 \pm 0.010
 D = 3.20 \pm 0.30 / 0.126 \pm 0.012
 E = 5.08 / 0.200 (TYP)
 F = 2.54 / 0.100 (TYP)
 G = 0.60 \pm 0.127 / 0.024 \pm 0.005

SCHEMATICS



IMPEDANCE CURVE



DELTA ELECTRONICS, INC.

(TAOYUAN PLANT CPBG) 252, SHANG YING ROAD, KUEI SAN, TAOYUAN HSIEN 333, TAIWAN, R.O.C.
 TEL: 886-3-3591968; FAX: 886-3-3591991
<http://www.deltaww.com/products/networking/power.htm>