

SCALE FULL

DO NOT SCALE PRINT

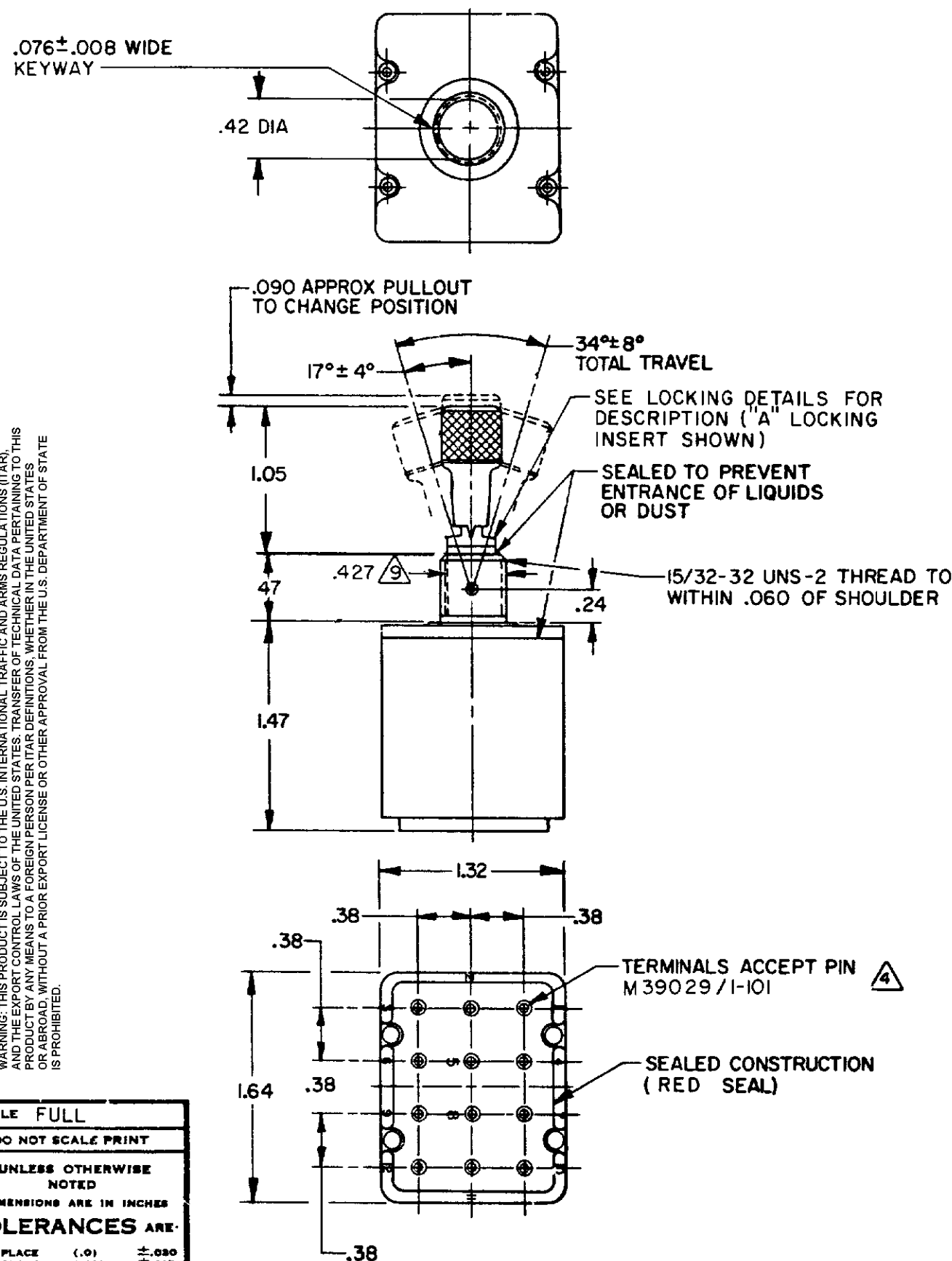
UNLESS OTHERWISE
NOTED

DIMENSIONS ARE IN INCHES

TOLERANCES ARE:

ONE PLACE	(.0)	± .030
TWO PLACE	(.00)	± .015
THREE PLACE	(.000)	± .005
ANGLES		±

WEIGHT 240 LB MAX



<p>"A"</p> <p>LOCKED IN THREE POSITIONS</p>	<p>"B"</p> <p>LOCKED IN CENTER AND EXTREME POSITION (KEYWAY SIDE)</p>	<p>"D"</p> <p>LOCKED OUT OF CENTER POSITION</p>	<p>"E"</p> <p>LOCKED IN CENTER POSITION</p>	<p>"F"</p> <p>LOCKED IN EXTREME POSITION (OPPOSITE KEYWAY)</p>
<p>"G"</p> <p>LOCKED IN EXTREME POSITION (KEYWAY SIDE)</p>	<p>"H"</p> <p>LOCKED OUT OF CENTER AND EXTREME POSITION (KEYWAY SIDE)</p>	<p>"J"</p> <p>LOCKED OUT OF CENTER AND EXTREME POSITION (OPPOSITE KEYWAY)</p>	<p>"K"</p> <p>LOCKED IN CENTER AND EXTREME POSITION (OPPOSITE KEYWAY)</p>	<p>"L"</p> <p>LOCKED OUT OF EXTREME POSITION (KEYWAY SIDE)</p>
<p>"M"</p> <p>LOCKED OUT OF AND INTO EXTREME POSITION (OPPOSITE KEYWAY)</p>	<p>"N"</p> <p>LOCKED OUT OF EXTREME POSITION (OPPOSITE KEYWAY)</p>	<p>"P"</p> <p>LOCKED OUT OF AND INTO EXTREME POSITION (KEYWAY SIDE)</p>		

CIRCUIT MADE WITH TOGGLE LEVER IN

KEYWAY SIDE	CENTER	OPPOSITE KEYWAY
MAINTAINED POSITION	MAINTAINED POSITION	MAINTAINED POSITION

- 1 - SWITCHES ARE CAPABLE OF WITHSTANDING A TEMPERATURE OF 160°F CONTINUOUSLY AT FULL RATED LOAD
- 2 - CIRCUIT DESIGNATION, MICRO SWITCH CATALOG LISTING AND MILITARY PART NUMBER STAMPED ON SIDE OF SWITCH
- 3 - FURNISHED UNASSEMBLED
- 4 - THE SEALING GROMMET SHALL SEAL ON A SMOOTH WIRE INSULATION OF .040 TO .083 DIAMETER (16-20 GAGE)
- 5 - KEYWAY SHOWN ON LEFT
- 6 - SUFFIX LETTER MUST BE ADDED FOR DESIRED TYPE OF TOGGLE LOCKING. SEE CHART FOR AVAILABLE LOCKING COMBINATIONS
- 7 - UNUSED TERMINAL HOLES MAY BE SEALED WITH PLUGS M83723/28-20
- 8 - TOGGLE AND BUSHING ARE NICKEL PLATED
- 9 - FROM MAJOR DIA. OF 15/32 THREAD TO BOTTOM OF KEYWAY