

1XE8

CATALOG LISTING

PAGE 1 OF 1

REPLACES

SR-9739

M

ISSUE

8

CHECK

REVISIONS

CO-94402
JJA
5 MAR 99
B 0063672
KNR
20 APR 10

20 APR 10

CMH

CHECK

5 MAR 99

JAF

CHECK

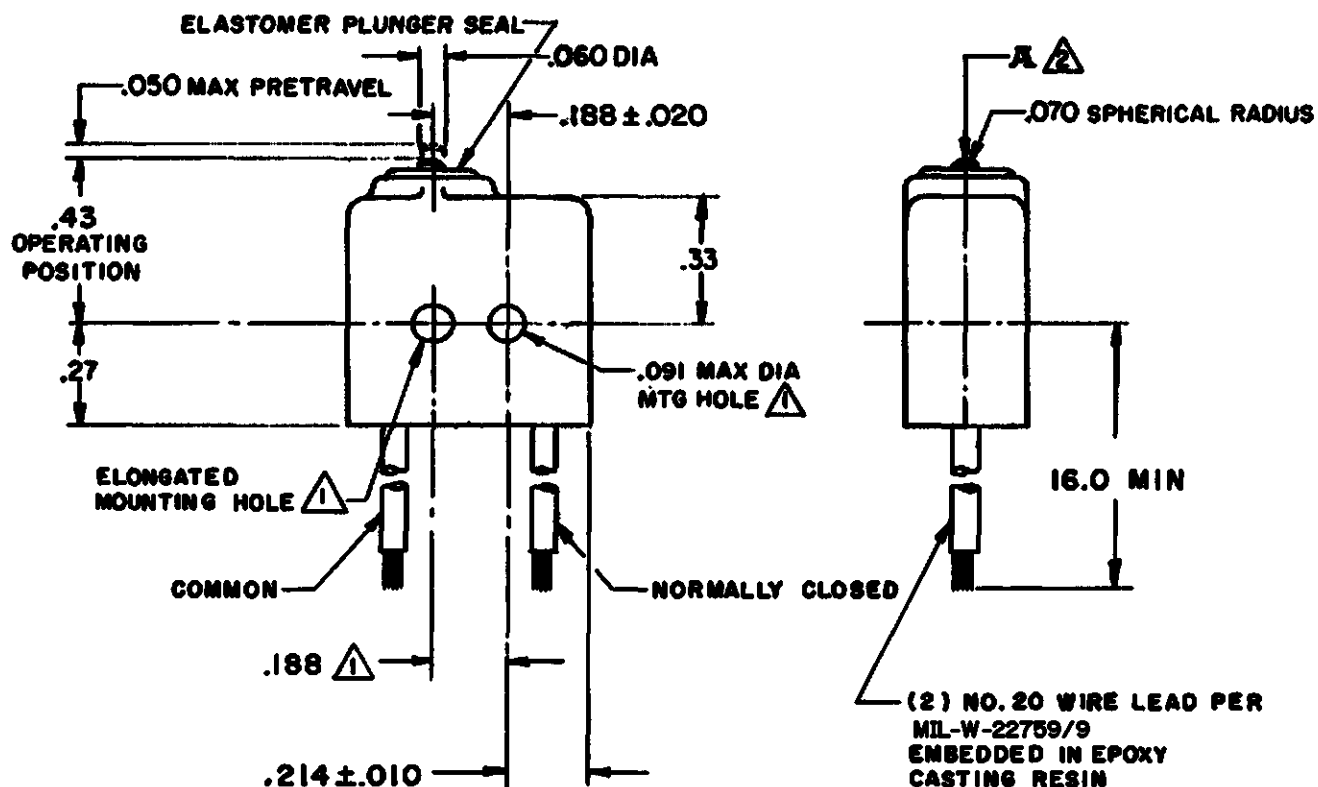
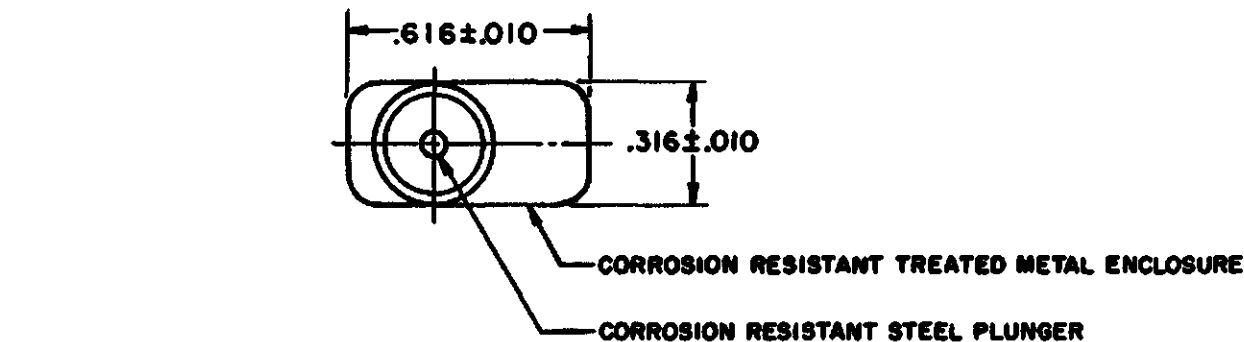
5 MAR 99

JJA

5 MAR 99

RASTER

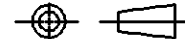
DRAWN



- NOTES**
- 1 MOUNTING HOLES WILL ACCEPT .087 MAX DIA PINS OR SCREWS ON .188±.002 CENTERS
 - 2 ACTUATING IN LINE WITH ARROW "A" IS RECOMMENDED
 - 3 WEIGHT OF SWITCH ONLY IS .16 OZ MAX. WEIGHT OF SWITCH WITH WIRE LEADS IS .48 OZ MAX

THIS DRAWING COVERS A PROPRIETARY ITEM AND IS THE PROPERTY OF MICRO SWITCH, A DIVISION OF HONEYWELL. THIS DRAWING IS NOT TO BE COPIED OR USED WITHOUT THE APPROVAL OF MICRO SWITCH.

THIRD ANGLE PROJECTION



CHARACTERISTICS

OPERATING FORCE ----- **10 OZ MAX**
RELEASE FORCE ----- **2 OZ MIN**
RELEASE TRAVEL ----- **.004 MIN**
DIFFERENTIAL TRAVEL ----- **.005 MAX**
OVERTRAVEL ----- **.004 MIN**

ELECTRICAL DATA

CONTACT ARRANGEMENT
S P N C

SCALE **2:1**

DO NOT
SCALE PRINT

UNLESS OTHERWISE SPECIFIED TOLERANCES ARE

ONE PLACE (.0) ±.030

TWO PLACE (.00) ±.015

THREE PLACE (.000) ±.005

ANGLES ±

WEIGHT **3**

Mouser Electronics

Authorized Distributor

Click to View Pricing, Inventory, Delivery & Lifecycle Information:

[Honeywell:](#)

[1XE8](#)