

(0.635 mm) .025"

BTS, BSS SERIES

BASIC BLADE & BEAM HEADER & SOCKET

SPECIFICATIONS

For complete specifications and recommended PCB layouts see www.samtec.com?BTS or www.samtec.com?BSS

Insulator Material:

Liquid Crystal Polymer

Terminal Material (BTS):

Phosphor Bronze

Contact Material (BSS):

Phosphor Bronze

Plating: Au or Sn over

50 µ" (1.27 µm) Ni

Current Rating: 1.8 A per pin (2 pins powered)

Operating Temp Range:

-55 °C to +125 °C

RoHS Compliant: Yes

PROCESSING

Lead-Free Solderable: Yes

SMT Lead Coplanarity:

(0.10 mm) .004" max

Board Stacking:

For applications requiring more than two connectors per board or 100 positions or higher, contact ipg@samtec.com

RECOGNITIONS

For complete scope of recognitions see www.samtec.com/quality



BTS

NO. OF POSITIONS
PER ROW

01

PLATING
OPTION

D

A

OTHER
OPTION

Mates with:
BSS

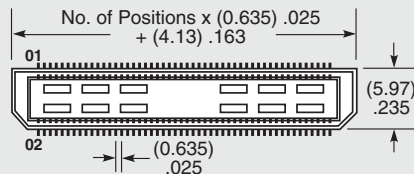
-025, -050, -075, -100

-F
= Gold Flash on contact,
Matte Tin on tail

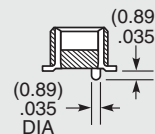
-L
= 10 µ" (0.25 µm)
Gold on contact,
Matte Tin on tail

-K
= (7.00 mm) .275" DIA
Polyimide Film Pick
& Place Pad

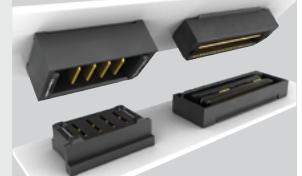
-TR
= Tape & Reel
(~100 positions
maximum)



• Passes
10 year MFG



POWER/SIGNAL APPLICATION



Compatible with
UMPT/UMPS for flexible
two-piece power/signal solutions

MATED HEIGHT

LEAD STYLE	MATED HEIGHT*
-01	(5.00) .197

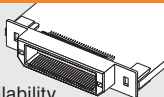
*Processing conditions will affect mated height.

ALSO AVAILABLE (MOQ Required)

- 30 µ" (0.76 µm) Gold
- Other platings
- Other positions

OTHER SOLUTIONS

Edge
Mount
capability.
Call for availability.



Note:
Some lengths, styles and
options are non-standard,
non-returnable.

BSS

NO. OF POSITIONS
PER ROW

01

PLATING
OPTION

D

A

OTHER
OPTION

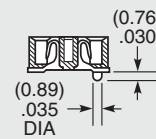
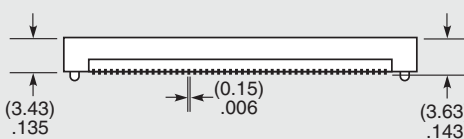
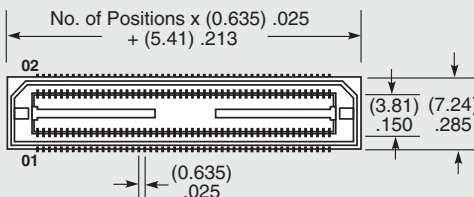
Mates with:
BTS

-025, -050, -075, -100

-F
= Gold Flash on contact,
Matte Tin on tail

-L
= 10 µ" (0.25 µm)
Gold on contact,
Matte Tin on tail

-TR
= Tape & Reel
(~100 positions
maximum)



Due to technical progress, all designs, specifications and components are subject to change without notice.

WWW.SAMTEC.COM

All parts within this catalog are built to Samtec's specifications.

Customer specific requirements must be approved by Samtec and identified in a Samtec customer-specific drawing to apply.