

Monitoring, Controlling and Switching with SIRIUS Relays

One range for every application



SIRIUS

Answers for industry.

SIEMENS



The Wide Range of SIRIUS Relays

A relay for every application

Every engineer knows that he must be completely up to date when it comes to controls, load feeders and drives. However, with coupling, control and monitoring relays, the search for various suppliers becomes time-consuming. This is now a thing of the past because we have all of these products in just one family: SIRIUS®. This makes it easy for you to select the optimum product and guarantees you a top price-performance ratio.

In our assortment of SIRIUS relays, you can find everything you need for motor feeders. Simple and easy. From a single source. Whether you need timing or reliable monitoring relays, narrow coupling relays, plug-in relays, low-noise power relays or interface converters – it would be difficult to find a more complete and extensive range of relays. We have a relay for simply every application.

All SIRIUS relays are especially easy to use – across the product range. Please take a closer look at our range and see for yourself. You'll be quite impressed.

SIRIUS Relays – a complete range to cover every application.

The highlights at a glance:

- **An extensive range:**
A matching relay for every application
- **User-friendly:**
Extremely simple to operate
- **Multi-functional:**
Relays with a high degree of versatility
- **In line with requirements from practice:**
Actually graduated regarding the performance
- **Excellent price-performance ratio**



	Timing relays	3RP15/3RP20 for rail mounting	4
	Monitoring relays for line monitoring	3UG monitoring relays for voltage, line and insulation	6
	Monitoring relays for load monitoring	3UG4 monitoring relays for single-phase current, power factor and active current monitoring	8
	Monitoring relays for residual-current monitoring	3UG4 monitoring relays for residual-current monitoring	10
	Further monitoring relays	3UG4 monitoring relays for level and speed	12
	Thermistor motor protection	3RN1	14
	Temperature monitoring relays	3RS10/3RS11 analog adjustable relays	16
		3RS10/3RS11/3RS20/3RS21 digitally adjustable relays	18
	Coupling relays, narrow design	3TX701 relay couplers, plug-in	20
		3TX700 relay couplers, cannot be plugged-in	
		3TX70 semiconductor couplers	22
	Coupling relays with industrial housing	3RS18 relay couplers	24
	Coupling relays with plug-in relays	LZS plug-in relay couplers	25
	Converters	3RS17 interface converters Normalized signal and universal converter	28
	Power relays	3TG10	30
	Power supplies	SITOP Power	33
	Service & Support		31

3RP15/3RP20 Timing Relays

for rail mounting

Electronic 3RP1/3RP2 timing relays are used for all switching operations in starting, protection and open- and closed-loop control circuits that require time delay functions. Due to their well-proven concept and their space-saving, compact design, they are the ideal timing devices for cabinet, panel and control manufacturers from all areas of industry.



Applications:

On delay:

- Noise pulses are suppressed
- Motors are started step by step to ensure that the line supply is not subject to excessive stress.

Off delay:

- Run-on functions are generated after the control voltage is removed (fan run-on)
- Gradually delayed disconnection of motors, fans, etc., for targeted system shutdown

Star/delta:

- Motors are changed-over from a star to a delta configuration with a fixed interval time of 50 ms in order to prevent short circuits between phases

Your advantages:

- Labels are used to document the function that has been set at multi-functional timing relays
- Transparent range for every application: only seven basic devices
- Considerable logistical advantages thanks to versions with wide voltage and wide time setting range
- Optimum price-performance ratio
- Positively-driven relay contacts can be used in safety-relevant circuits up to Category 2 according to DIN EN 954-1
- Hard-gold-plated relay contacts for optimum interaction with electronic controls
- Sealable cover to secure parameters that have been set
- All versions with removable terminals
- All versions with screw terminals or with the innovative spring-loaded terminal system

Engineering information:

- For the "clock-pulse" function, pulse and interval can be separately set, for the flashing function it is pulse and interval 1:1
- "Time addition" function (no holding on supply failure function) for the multi-function relays: by activating the start contact

Electronic 3RP15 timing relays in an industrial enclosure, 22.5 mm

Function	Contact elements	Time range	Rated control supply voltage V _s	Order No.
8 functions	1 CO (changeover contact)	0.05 s–100 h	12 V DC	3RP1505-□AA40
8 functions	1 CO	0.05 s–100 h	AC/DC 24/100–127 V AC	3RP1505-□AQ30
8 functions	1 CO	0.05 s–100 h	AC/DC 24/200–240 V AC	3RP1505-□AP30
8 functions	1 CO	0.05 s–100 h	24–240 V AC/DC	3RP1505-□AW30
8 functions	2 CO	0.05 s–100 h	24–240 V AC/DC	3RP1505-□RW30 ¹⁾
16 functions	2 CO	0.05 s–100 h	AC/DC 24/100–127 V AC	3RP1505-□BQ30
16 functions	2 CO	0.05 s–100 h	AC/DC 24/200–240 V AC	3RP1505-□BP30
16 functions	2 CO	0.05 s–100 h	24–240 V AC/DC	3RP1505-□BW30
16 functions	2 CO	0.05 s–100 h	400–440 V AC	3RP1505-1BT20 ²⁾
On delay	1 CO	0.5–10 s	AC/DC 24/100–127 V AC	3RP1511-□AQ30
On delay	1 CO	0.5–10 s	AC/DC 24/200–240 V AC	3RP1511-□AP30
On delay	1 CO	1.5–30 s	AC/DC 24/100–127 V AC	3RP1512-□AQ30
On delay	1 CO	1.5–30 s	AC/DC 24/200–240 V AC	3RP1512-□AP30
On delay	1 CO	5–100 s	AC/DC 24/100–127 V AC	3RP1513-□AQ30
On delay	1 CO	5–100 s	AC/DC 24/200–240 V AC	3RP1513-□AP30
On delay	1 CO	0.05 s–100 h	AC/DC 24/100–127 V AC	3RP1525-□AQ30
On delay	1 CO	0.05 s–100 h	AC/DC 24/200–240 V AC	3RP1525-□AP30
On delay	2 CO	0.05 s–100 h	42–48/60 V AC/DC	3RP1525-□BR30
On delay	2 CO	0.05 s–100 h	AC/DC 24/100–127 V AC	3RP1525-□BQ30
On delay	2 CO	0.05 s–100 h	AC/DC 24/200–240 V AC	3RP1525-□BP30
On delay	2 CO	0.05 s–100 h	24–240 V AC/DC	3RP1525-□BW30
On delay, 2-wire	1 NO contact, solid-state	0.05–240 s	24–66 V AC/DC	3RP1527-□EC30
On delay, 2-wire	1 NO contact, solid-state	0.05–240 s	90–240 V AC/DC	3RP1527-□EM30
Off delay with auxiliary voltage	1 CO	0.5–10 s	AC/DC 24/100–127 V AC	3RP1531-□AQ30
Off delay with auxiliary voltage	1 CO	0.5–10 s	AC/DC 24/200–240 V AC	3RP1531-□AP30
Off delay with auxiliary voltage	1 CO	1.5–30 s	AC/DC 24/100–127 V AC	3RP1532-□AQ30
Off delay with auxiliary voltage	1 CO	1.5–30 s	AC/DC 24/200–240 V AC	3RP1532-□AP30
Off delay with auxiliary voltage	1 CO	5–100 s	AC/DC 24/100–127 V AC	3RP1533-□AQ30
Off delay with auxiliary voltage	1 CO	5–100 s	AC/DC 24/200–240 V AC	3RP1533-□AP30
NEW! Off delay without auxiliary voltage	1 CO	0.05–600 s	24 V AC/DC	3RP1540-□AB31
NEW! Off delay without auxiliary voltage	1 CO	0.05–600 s	100–127 V AC/DC	3RP1540-□AJ31
NEW! Off delay without auxiliary voltage	1 CO	0.05–600 s	200–240 V AC/DC	3RP1540-□AN31
NEW! Off delay without auxiliary voltage	1 CO	0.05–600 s	24–240 V AC/DC	3RP1540-□AW31
NEW! Off delay without auxiliary voltage	2 CO	0.05–600 s	24 V AC/DC	3RP1540-□BB31
NEW! Off delay without auxiliary voltage	2 CO	0.05–600 s	100–127 V AC/DC	3RP1540-□BJ31
NEW! Off delay without auxiliary voltage	2 CO	0.05–600 s	200–240 V AC/DC	3RP1540-□BN31
NEW! Off delay without auxiliary voltage	2 CO	0.05–600 s	24–240 V AC/DC	3RP1540-□BW31
Clock-pulse relay	1 CO	0.05 s–100 h	42–48/60 V AC/DC	3RP1555-□AR30
Clock-pulse relay	1 CO	0.05 s–100 h	AC/DC 24/100–127 V AC	3RP1555-□AQ30
Clock-pulse relay	1 CO	0.05 s–100 h	AC/DC 24/200–240 V AC	3RP1555-□AP30
Star/delta with run-on function	3 x 1 NO contact	1–20 s, 30–600 s (run-on)	AC/DC 24/100–127 V AC	3RP1560-□SQ30
Star/delta with run-on function	3 x 1 NO contact	1–20 s, 30–600 s (run-on)	AC/DC 24/200–240 V AC	3RP1560-□SP30
Star/delta	1 NO contact + 1 NO contact	1–20 s	AC/DC 24/100–127 V AC	3RP1574-□NQ30
Star/delta	1 NO contact + 1 NO contact	1–20 s	AC/DC 24/200–240 V AC	3RP1574-□NP30
Star/delta	1 NO contact + 1 NO contact	3–60 s	AC/DC 24/100–127 V AC	3RP1576-□NQ30
Star/delta	1 NO contact + 1 NO contact	3–60 s	AC/DC 24/200–240 V AC	3RP1576-□NP30

Electronic 3RP20 timing relays in the SIRIUS design, 45 mm

8 functions	1 CO (changeover contact)	0.05 s–100 h	AC/DC 24/100–127 V AC	3RP2005-□AQ30
8 functions	1 CO	0.05 s–100 h	AC/DC 24/200–240 V AC	3RP2005-□AP30
On delay	1 CO	0.05 s–100 h	AC/DC 24/100–127 V AC	3RP2025-□AQ30
On delay	1 CO	0.05 s–100 h	AC/DC 24/200–240 V AC	3RP2025-□AP30
16 functions	2 CO	0.05 s–100 h	24–240 V AC/DC	3RP2005-□BW30

¹⁾ Positively driven and hard-gold-plated relay contacts²⁾ This device is only available with screw terminals

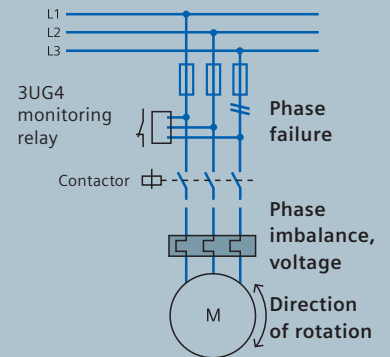
3UG Monitoring Relays

for line, single-phase voltage and insulation monitoring

The 3UG4 monitoring relays provide a maximum degree of protection for machines, plants and systems. This means that line and voltage faults are detected early and the appropriate response is initiated before more significant damage can occur.



Configuration of a 3-phase monitoring function



Your advantages:

- Due to the wide voltage range it can be used on all line supplies around the world – from 160 V to 600 V – without an auxiliary voltage
- Can be set to overrange, underrange and window monitoring
- Freely parameterizable delay times and reset functions
- Narrow width for all versions for line and voltage monitoring
- For the digital versions, the actual value and fault type are displayed
- Automatic rotation direction correction by differentiating between line faults and incorrect phase sequence
- All versions have removable terminals
- All versions have either screw terminals or alternatively innovative spring-loaded terminals

Applications:

The applications are listed in the following table. These tables indicate the various equipment/system conditions that can be detected using the monitoring parameters.

Measured quantity	Possible plant or system fault
Phase sequence Phase failure	<ul style="list-style-type: none"> Direction of rotation of the drive A fuse has blown Control supply voltage has failed Single-phase operation of a motor with corresponding overheating
Phase dissymmetry	<ul style="list-style-type: none"> Motor overheating as a result of non-symmetrical voltages or phase failure Line supplies with non-symmetrical load are detected
Undervoltage	<ul style="list-style-type: none"> A phase failure is detected in spite of regenerative feedback Motor draws an increased current and in turn overheats A device is undesirably reset Detection of line supply dips, especially when supplied from a battery Threshold value switch for analog signals 0 to 10 V
Overvoltage	<ul style="list-style-type: none"> A plant is protected against destruction due to supply overvoltages A plant or system switches-in above a certain voltage Threshold value switch for analog signals 0 to 10 V
Insulation monitoring	<ul style="list-style-type: none"> The insulation resistance for non-grounded plants and systems is monitored

3UG4 monitoring relays for line supply and three-phase voltages

Phase sequence	Phase failure	Phase imbalance	Hysteresis	Under-voltage	Over-voltage	N-conductor monitoring	Delay times	Contacts	Rated control supply voltage $V_s^{1)}$	Order No.
22.5 mm wide 3UG4614 to 3UG4618 can be digitally set, with fault memory and with LC display										
Yes	Conditional ²⁾	–	–	–	–	–	–	1 CO	160–260 V 320–500 V 420–690 V	3UG4511-□AN20 3UG4511-□AP20 3UG4511-□AQ20
								2 CO	160–260 V 320–500 V 420–690 V	3UG4511-□BN20 3UG4511-□BP20 3UG4511-□BQ20
Yes	Yes	10 %	–	–	–	–	–	1 CO 2 CO	160–690 V 160–690 V	3UG4512-□AR20 3UG4512-□BR20
Yes	Yes	20 %	5 %	80 % of U_s	–	–	Off delay 0.1–20 s	2 CO	160–690 V	3UG4513-□BR20
Selectable	Yes	0 or 5–20 %	1–20 V	160–690 V	–	–	On and off delay 0.1–20 s	2 CO	160–690 V	3UG4614-□BR20
Selectable	Yes	Using threshold values	1–20 V	160–690 V	160–690 V	–	0.1–20 s for V_{min} and V_{max}	1 CO for V_{min} and V_{max}	160–690 V	3UG4615-□CR20
Selectable	Yes	Using threshold values	1–20 V	90–400 V w.r.t. N	90–400 V w.r.t. N	Yes	0.1–20 s for V_{min} and V_{max}	1 CO for V_{min} and V_{max}	90–400 V w.r.t. N	3UG4616-□CR20
Autom. correction	Yes	0 or 5–20 %	1–20 V	160–690 V	160–690 V	–	Off delay 0.1–20 s	1 CO for line faults and 1 CO for phase sequence	160–690 V	3UG4617-□CR20
Autom. correction	Yes	0 or 5–20 %	1–20 V	90–400 V w.r.t. N	90–400 V w.r.t. N	Yes	Off delay 0.1–20 s	1 CO for line faults and 1 CO for phase sequence	90–400 V w.r.t. N	3UG4618-□CR20

¹⁾ Absolute limits²⁾ Return voltage due to coupling between the individual phases

The 3UG4511 device can not detect phase failures reliably.

Loads connected to the three-phase line supply – such as motor windings, lamps, transformers – result in a coupling between the individual phases. As a result of this coupling, there is always a return voltage at the equipment terminal of the phase that has failed.

Screw terminal

1

Spring-loaded terminal

2

Single-phase voltage monitoring

Measuring range	Hysteresis	Contacts	Delay time	Auxiliary voltage	Order No.
22.5 mm wide, all of the devices can be digitally set and have an LC display, a fault memory that can be switched-in, simultaneous monitoring for overvoltage and undervoltage over the complete measuring range					
17–275 V AC/DC	0.1–150 V	1 W	0.1–20 s	Self-supplied	3UG4633-□AL30
0.1–60 V AC/DC	0.1–30 V	1 W	0.1–20 s	24 V AC/DC	3UG4631-□AA30
				24–240 V AC/DC	3UG4631-□AW30
10–600 V AC/DC	0.1–300 V	1 W	0.1–20 s	24 V AC/DC	3UG4632-□AA30
				24–240 V AC/DC	3UG4632-□AW30

Insulation monitoring for IT line supplies

Line supply	Measuring range	Auto reset/ fault memory	Contacts	Width	Auxiliary voltage	Order No.
AC	1–110 kΩ	Selectable	1 W	45 mm	115/230 V AC	3UG3081-1AK20
					24–240 V AC	3UG3081-1AW30
DC	10–110 kΩ	Selectable	1 W	45 mm	24–240 V AC	3UG3082-1AW30

Screw terminal

1

Spring-loaded terminal

2

3UG4 Monitoring Relays

for single-phase current, power factor and active current monitoring

3UG4 relays that monitor current, power factor and active current are ideal for monitoring the load of motors and the functionality of electronic loads. These devices detect the effect of wear and faults early on, thereby for example facilitating the timely implementation of maintenance measures to prevent system failures.



Your advantages:

- Wide-voltage versions reduce inventory stock levels
- Variable settings for overrange, under-range or window monitoring
- Freely parameterizable delay times and reset behavior
- Actual value and fault type are permanently displayed
- All versions have removable terminals
- All versions have screw terminals or innovative spring-loaded terminals

Current monitoring:

- Only two versions from 2 mA to 10 A
- Real effective value measurement
- Applicable for frequencies with 40–500 Hz AC and DC

Power factor and active current monitoring:

- Global application thanks to wide-range voltage between 90 and 690 V AC
- Capable of monitoring even small single-phase motors with a no-load running current below 0.5 A
- Easy identification of threshold values thanks to direct relationship between the measurement and the motor load
- Window monitoring and active current measurement allow for easy identification of cable breakage between control cabinet and motor as well as phase failure
- Monitoring of the motor load independent of the main voltage
- Selectable measuring principle power factor and/or I_{res} (active current)

Applications:

- The applications can be seen in the adjacent table. These tables show the various equipment/system states that can be detected using the monitoring parameters.

3UG4 monitoring relays – single-phase current monitoring

Measuring range	Hysteresis	Contacts	Starting-bypass time	Tripping delay	Rated control supply voltage V_s	Order No.
Width 22.5 mm, all devices digitally adjustable and with LC display, a fault memory that can be switched-in, simultaneous monitoring for current exceedance and shortfall over the entire measuring range						
3.0 mA AC/DC up to 500 mA AC/DC	0.1 mA–250 mA	1 CO	0.1–20 s	0.1–20 s	24 V AC/DC	3UG4621-□AA30
					24–240 V AC/DC	3UG4621-□AW30
0.05 A AC/DC up to 10 A AC/DC	0.01 A–5 A	1 CO	0.1–20 s	0.1–20 s	24 V AC/DC	3UG4622-□AA30
					24–240 V AC/DC	3UG4622-□AW30

Power factor and active current monitoring

Measuring range for power factor	Measuring range for active current I_{res}	Power factor hysteresis	Active current hysteresis	On delay	Tripping delay	Rated control supply voltage V_s ¹⁾	Order No.
22.5 mm wide, all of the devices can be digitally set and have an LC display, a fault memory that can be switched-in, simultaneous power factor and active current monitoring over the entire measuring range							
0.1–0.99 (cos φ)	0.2–10.0 A	0.1 (cos φ)	0.1–2.0 A	0–99 s	0.1–20.0 s	90–690 V AC	3UG4641-□CS20

¹⁾ Absolute limits

Screw terminal

1

Spring-loaded terminal

2

Monitoring parameter**Plant/system states****Current monitoring**

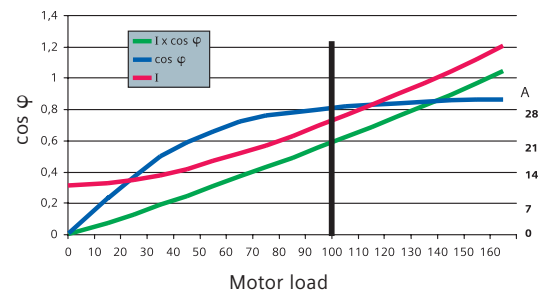
- Overload monitoring
- Underload monitoring close to the rated torque
- Monitoring the functionality of electric loads
- Wire breakage monitoring
- Energy management (phase current monitoring)
- Threshold value switch for analog signals up to 20 mA

Power factor and active current monitoring

- No-load monitoring
- Underload monitoring in the lower power range
- Overload monitoring
- Extremely simple power factor monitoring of line supplies to control compensation equipment
- Energy management
- Interrupted cable between the cabinet and the motor

Current and cos φ as a function of the motor load

Rule of thumb:

cos φ changes significantly below the rated load; the current increases overproportionally above the rated load.

The active current I_{res} indicates a linear correlation between the motor load and the measured value over the entire measuring range.

3UG4 Monitoring Relays

for residual-current monitoring

Over time, systems may experience insulation problems caused by humidity or severe contamination. These problems cause residual currents which may result in fatal system damage.

Using the 3UG4624 residual-current monitoring relay in combination with a 3UL22 summation current transformer, such hazards can be eliminated. Due to adjustable limit or warning threshold values, the relay issues a warning before the limit value is reached and switches off when the limit value is exceeded after a certain delay time.



Your advantages:

- Global applicability due to wide voltage range from 90 V AC to 690 V AC
- Variably adjustable threshold values for warning and disconnection
- Freely parameterizable delay times and reset behavior
- Permanent display of the actual value and fault diagnostics via display
- Removable terminal and optional screw terminal or innovative spring-loaded terminal
- High flexibility and space savings due to the converter's assembly outside the control cabinet

Application areas:

Monitoring of systems prone to residual currents, e. g. caused by:

- Dust deposits or humidity
- Porous cables and lines
- Capacitive residual currents



3UG4 monitoring relays – for residual-current monitoring

Display range	Setting ranges for warning and disconnection	Contacts	Hysteresis with threshold value	Hysteresis with warning value	On delay	Tripping delay time	Rated control supply voltage $V_s^{1)}$	Order No.
Width 22.5 mm, digitally adjustable featuring LC display, connectable fault memory, monitoring of warning threshold and limit value exceedance, for 3UL22 summation current transformer with $I_{\Delta n}$ from 0.3 to 40 A								
10 to 120 % of the nominal transformer value in A	10 to 100 % of the nominal transformer value in A	1 CO + 1 CO	Display accuracy of up to 50 % of the nominal transformer value in A	5 % fixed of the nominal transformer value in A	0.1–20.0 s	0.1–20.0 s	90–690 V AC	3UG4624-□CS20

¹⁾ Absolute limits
 Screw terminal
 Spring-loaded terminal
**3UL22 summation current transformer for external ground fault monitoring**

Rated insulation voltage U_i	Rated residual current $I_{\Delta n}$	Through-hole diameter	For Protodur cable (for through-connection)	Order No.
Detection of residual currents in machines and systems				
690 V AC	0.3 A	40 mm	max. 4 x 95 mm ²	3UL2201-1A
	0.5 A			3UL2201-2A
	1 A			3UL2201-3A
690 V AC	0.3 A	65 mm	max. 4 x 240 mm ²	3UL2202-1A
	0.5 A			3UL2202-2A
	1 A			3UL2202-3A
	10 A			3UL2202-2B
	16 A			3UL2202-3B
	25 A			3UL2202-4B
	40 A			3UL2202-5B
1000 V AC	0.3 A	120 mm	max. 8 x 300 mm ²	3UL2203-1A
	0.5 A			3UL2203-2A
	1 A			3UL2203-3A
	6 A			3UL2203-1B
	10 A			3UL2203-2B
	16 A			3UL2203-3B
	25 A			3UL2203-4B
	40 A			3UL2203-5B

3UG4 Monitoring Relays

for level and speed

3UG4 monitoring relays also detect non-electrical parameters.

Our 3UG4501 level monitoring relays offer reliable 1- or 2-point regulations and alarm messages in case of overflow or dry running on the basis of a simple principle: Almost all liquids are conductive, which is utilized for the monitoring of filling levels. If the probes are immersed in the liquid, the current flows – if the probes fall dry, no current flows.

The 3UG4651 speed monitoring relays monitor the setpoint speed of motors for any exceedance of the upper or lower limit. Implementing a periodic continuous measuring, they monitor the pulses per rotation delivered to the sensors attached to the motor. Furthermore, the relays are suitable for all functions requiring the monitoring of a continuous pulse signal, e.g. belt operation and clock time monitoring or bypass control.



Level monitoring

Your advantages:

- Global applicability due to wide voltage range from 24 to 240 V AC/DC
- 2- and 3-pole wire electrodes for ease of mounting from the top/bottom which can be individually trimmed
- Bar-type electrodes for lateral mounting for higher filling levels and minimum space requirements
- Flexible adjustment to various conductive liquids due to analog sensitivity setting from 2 to 200 kOhm
- Compensation of wave movements due to tripping delay times from 0.1 to 10 seconds
- Selectable supply or discharge function
- All designs featuring removable terminals and optional screw terminals or innovative spring-loaded terminals

Application areas:

- 1- and 2-point level control
- Overflow protection
- Dry running protection
- Leakage monitoring

Speed monitoring

Your advantages:

- Global applicability due to wide voltage range from 24 to 240 V AC
- Variable adjustment to upper or lower limit exceedance or window monitoring
- Freely parameterizable delay times and reset behavior
- Permanent display of actual value or fault type
- Use of up to 10 sensors per rotation with extremely slowly rotating motors
- Two- or three-conductor sensors and sensors with mechanical switching or electronic output connectable
- Auxiliary voltage for sensor integrated
- All versions with removable terminal and optional screw connection or innovative spring-loaded terminal

Application areas:

- Slip/breakage of a belt drive
- Load shedding
- Standstill monitoring (no personal protection)
- Transport item monitoring for completeness

3UG4 monitoring relays for 1- and 2-point level monitoring of conductive liquids

Sensitivity	Contacts	Tripping delay time	Width	Rated control supply voltage V _s	Order No.
2–200 kΩ	1 CO	0.1–10 s	22.5 mm	24 V AC/DC	3UG4501-□AA30
				24–240 V AC/DC	3UG4501-□AW30

Probes for level monitoring

Description	Cable connection	Number of poles		Order No.
Wire electrode, 500 mm long, with Teflon insulation, max. operating temperature 90 °C, max. operating pressure 10 bar	3 x 0.5 mm ² , 2 m	3-pole		3UG3207-3A
	2 x 0.5 mm ² , 2 m	2-pole		3UG3207-2A
Bar-type electrode for lateral mounting, max. operating temperature 90 °C, max. operating pressure 10 bar	3 x 0.5 mm ² , 2 m	2-pole		3UG3207-2B
	2 x 0.5 mm ² , 2 m	1-pole		3UG3207-1B
Rod-type electrode, rugged, max. operating temperature 90 °C, max. operating pressure 10 bar	2 x 0.5 mm ² , 2 m	1-pole		3UG3207-1C



3UG3207-3A



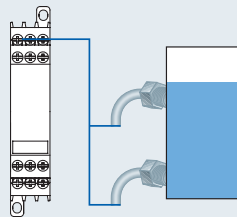
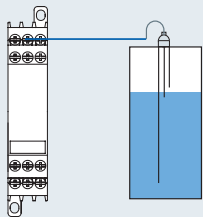
3UG3207-2B



3UG3207-1C

Screw terminal **1**
Spring-loaded terminal **2**

1- and 2-point level monitoring, overflow protection



This method is applicable to very many liquids and substances; prerequisite: specific resistance < 200 kΩ

Product	kΩ	Product	kΩ
Buttermilk	1	Natural water	5
Fruit juice	1	Waste water	5
Vegetable juice	1	Starch solution	5
Milk	1	Oil	10
Soup	2.2	Condensed water	18
Beer	2.2	Soap foam	18
Coffee	2.2	Jams	45
Ink	2.2	Jellies	45
Salt water	2.2	Sugar solution	90
Wine	2.2	Whiskey	220
		Distilled water	450

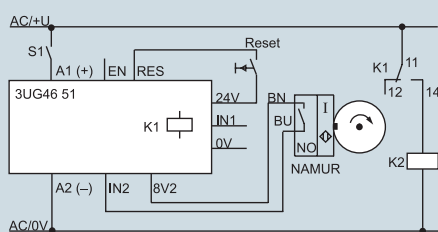
3UG4 monitoring relays for upper and lower speed exceedance monitoring

Measuring range	Contacts	Start-up bridging time	Tripping delay time	Width	Rated control supply voltage V _s	Order No.
Pulse/min 0.1–2200 (0.0017–36.67 Hz)	1 CO	1–900 s	0.1–99.9 s	22.5 mm	24 V AC/DC	3UG4651-□AA30
					24–240 V AC/DC	3UG4651-□AW30

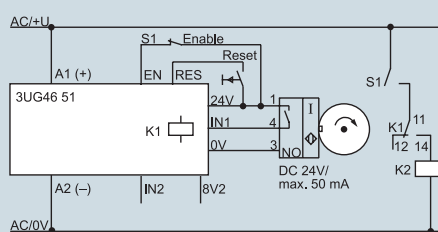
Screw terminal **1**
Spring-loaded terminal **2**

Speed monitoring

Without enable input



With enable input



3RN1 Thermistor Motor Protection

for overheating protection



Thermistor motor protection relays provide decisive advantages where current-dependent protection using either a circuit-breaker or an overload relay is not the ideal solution: In some cases, often as a result of external effects, overheating can occur without being detected by the thermal image in the circuit-breaker or an overload relay. Examples include heavy-duty starting (e.g. centrifuges), operation with AC drive converters or frequent switching, braking operations or when cooling is restricted, e.g. due to accumulated dirt.



Your advantages:

- The motor winding temperature is directly measured
- Only one relay is required for all motor power ratings
- Device/terminal labeling acc. to DIN EN 50005 for "standard" switching relays and for overload protective devices
- Relays with hard-gold-plated contacts for use under difficult conditions
- LEDs indicate wire breakage and short circuit in the sensor circuit
- Version with protective separation up to 300 V according to DIN/VDE 0106 as well as versions with bistable relay for special applications
- ATEX certification for gases and dust
- All versions with removable terminals
- All versions with screw terminals or alternatively with innovative spring-loaded terminals

Application areas:

- Protection of motors against overheating, particularly with heavy-duty starting, braking operation, frequent switching or insufficient cooling
- "Alarm and trip" function by using two sensor circuits with different response temperatures – this means that it is possible to respond before shutting-down (additional cooling can be switched-in, the load reduced, etc.)
- Multi-motor protection using only one device, e.g. for conveyor lines – for several motors that must be shutdown together

Thermistor motor protection relays for PTC thermistors (type A PTCs)

All of the devices with the exception of 24 V AC/DC have electrical isolation

Version	Reset	Contacts	Rated control supply voltage V _s	Order No.	
Compact evaluation units, 22.5 mm wide, monostable, closed-circuit current principle, 1 LED					
Terminal A1 is connected to the common of the changeover contact	Auto	1 CO	24 V AC/DC	3RN1000-□AB00	
			110 V AC	3RN1000-□AG00	
			230 V AC	3RN1000-□AM00	
Standard evaluation units, 22.5 mm wide, monostable, closed-circuit current principle, 2 LEDs					
	Auto	1 NO + 1 NC	24 V AC/DC	3RN1010-□CB00	
			110 V AC	3RN1010-□CG00	
			230 V AC	3RN1010-□CM00	
			24–240 V AC/DC	3RN1010-□CW00	
		2 CO	24 V AC/DC	3RN1010-□BB00	
			110 V AC	3RN1010-□BG00	
			230 V AC	3RN1010-□BM00	
	2 CO hard-gold-plated	24 V AC/DC	3RN1010-□GB00		
		Manual/remote ³⁾	1 NO + 1 NC	24 V AC/DC	3RN1011-□CB00
				110/230 V AC	3RN1011-□CK00
Short circuits are detected in the sensor circuit	Manual/remote ³⁾	2 CO	24 V AC/DC	3RN1011-□BB00	
			110 V AC	3RN1011-□BG00	
			230 V AC	3RN1011-□BM00	
		2 CO hard-gold-plated	24 V AC/DC	3RN1011-□GB00	
Non-volatile outputs ²⁾	Manual/auto/remote	1 NO + 1 NC	24 V AC/DC	3RN1012-□CB00	
			110/230 V AC	3RN1012-□CK00	
Non-volatile outputs ²⁾ , short circuits are detected in the sensor circuit	Manual/auto/remote	2 CO	24 V AC/DC	3RN1012-□BB00	
			110 V AC	3RN1012-□BG00	
			230 V AC	3RN1012-□BM00	
		2 CO hard-gold-plated	24 V AC/DC	3RN1012-□GB00	
Non-volatile outputs ²⁾ , short circuits and wire breakage in the sensor circuit are detected and displayed, wide-range voltage with screw terminals with protective separation ¹⁾	Manual/auto/remote	2 CO	24 V AC/DC	3RN1013-□BB00	
			24–240 V AC/DC	3RN1013-1BW10 3RN1013-2BW00	
		2 CO hard-gold-plated	24–240 V AC/DC	3RN1013-1GW10 3RN1013-2GW00	
For bimetal sensors (without short-circuit detection)	Manual/remote	2 CO	230 V AC	3RN1014-1BM00	
Evaluation units for 2 sensor circuits, alarm and trip, 22.5 mm wide, monostable, closed-circuit current principle, 3 LEDs					
Test/reset button, non-volatile outputs ²⁾ ; the evaluation circuit for “alarm” uses an NO contact in the open-circuit principle	Manual/auto/remote	1 NO + 1 NC	24–240 V AC/DC	3RN1022-□DW00	
Evaluation units for 6 sensor circuits, multi-motor protection, 45 mm wide, monostable, closed-circuit current principle, 8 LEDs					
Test/reset button, non-volatile output ²⁾	Manual/auto/remote	1 NO + 1 NC	24–240 V AC/DC	3RN1062-□CW00	
Bistable evaluation units, 22.5 mm wide					
Test/reset button, non-volatile output ²⁾ , short circuits and wire breakage in the sensor circuit are detected and displayed, bistable version, not tripped when the control supply voltage fails	Manual/auto/remote	2 CO	24–240 V AC/DC	3RN1013-□BW01	

¹⁾ Protective separation up to 300 V according to DIN/VDE 0106²⁾ Information regarding the non-volatile outputs, refer to Catalog LV 1, chapter 7³⁾ Reset using the reset button or by interrupting the control supply voltage

Screw terminal **1**
Spring-loaded terminal **2**

3RS10/3RS11 Temperature Monitoring Relays

Analog adjustable relays

3RS10/11 relays are used to measure temperatures in solid, liquid and gaseous mediums. The temperature is measured using a sensor that is in the medium, evaluated by the unit and monitored to determine whether the temperature is within the upper and lower temperature limits. Depending on the function that has been parameterized, the output relay either switches on or off at these threshold values.



Your advantages:

- All devices have electrical isolation
Exception: 24 V AC/DC
- Simple handling using a rotary potentiometer
- Selectable hysteresis
- For devices with two threshold values, the operating principle can be selected
- All versions have removable terminals
- Many versions are available with innovative spring-loaded terminals

Application areas:

- Protecting motors and equipment/systems
- Monitoring temperatures in electrical cabinets
- Frost monitoring
- Temperature limits for process quantities – e. g. in the packaging industry or galvanizing systems
- Controlling plants and machines such as HVAC systems, solar collectors, heat pumps or warm water supply systems
- Bearing and gear oil temperature monitoring
- Monitoring cooling liquid

3RS10/3RS11 temperature monitoring relays

Sensor	Function	Measuring range	Rated control supply voltage V _s 50–60 Hz AC	Order No.
Analog adjustable, 1 threshold value, 22.5 mm wide; analog closed-circuit principle, no holding on supply failure function; 1 NO + 1 NC				
PT100 (resistance sensor)	Overrange	–50...+50 °C	24 V AC/DC	3RS10 00-□CD00
			110/230 V AC	3RS10 00-□CK00
		0...+100 °C	24 V AC/DC	3RS10 00-□CD10
			110/230 V AC	3RS10 00-□CK10
		0...+200 °C	24 V AC/DC	3RS10 00-□CD20
	Underrange		110/230 V AC	3RS10 00-□CK20
		–50...+50 °C	24 V AC/DC	3RS10 10-1CD00
			110/230 V AC	3RS10 10-1CK00
		0...+100 °C	24 V AC/DC	3RS10 10-1CD10
			110/230 V AC	3RS10 10-1CK10
Type J (thermoelement)	Overrange		110/230 V AC	3RS10 10-1CK20
		0...+200 °C	24 V AC/DC	3RS11 00-□CD20
			110/230 V AC	3RS11 00-1CK20
		0...+600 °C	24 V AC/DC	3RS11 00-1CD30
			110/230 V AC	3RS11 00-1CK30
Type K (thermoelement)	Overrange		110/230 V AC	3RS11 01-□CD20
		0...+200 °C	24 V AC/DC	3RS11 01-1CK20
			110/230 V AC	3RS11 01-1CD30
		0...+600 °C	24 V AC/DC	3RS11 01-1CK30
			110/230 V AC	3RS11 01-1CD40
		+500...+1000 °C	24 V AC/DC	3RS11 01-1CK40
		110/230 V AC	3RS11 01-1CK40	
Analog adjustable for alarm and trip (2 threshold values), 22.5 mm wide; open-circuit – closed-circuit current principle can be toggled between; no holding on supply failure function; 1 NO + 1 CO				
PT100 (resistance sensor)	Overrange	–50...+50 °C	24 V AC/DC	3RS10 20-1DD00
			24–240 V AC/DC	3RS10 20-1DW00
		0...+100 °C	24 V AC/DC	3RS10 20-1DD10
			24–240 V AC/DC	3RS10 20-1DW10
		0...+200 °C	24 V AC/DC	3RS10 20-1DD20
	Underrange		24–240 V AC/DC	3RS10 20-□DW20
		–50...+50 °C	24 V AC/DC	3RS10 30-1DD00
			24–240 V AC/DC	3RS10 30-1DW00
		0...+100 °C	24 V AC/DC	3RS10 30-1DD10
			24–240 V AC/DC	3RS10 30-1DW10
Type J (thermoelement)	Overrange		24–240 V AC/DC	3RS10 30-□DD20
		0...+ 200 °C	24 V AC/DC	3RS10 30-1DW20
			24–240 V AC/DC	3RS10 30-1DW20
		0...+200 °C	24 V AC/DC	3RS11 20-□DD20
			24–240 V AC/DC	3RS11 20-1DW20
Type K (thermoelement)	Overrange	0...+600 °C	24 V AC/DC	3RS11 20-1DD30
			24–240 V AC/DC	3RS11 20-1DW30
		0...+200 °C	24–240 V AC/DC	3RS11 21-1DW20
		0...+600 °C	24–240 V AC/DC	3RS11 21-1DW30
Type K (thermoelement)	Overrange	+500...+1000 °C	24 V AC/DC	3RS11 21-1DD40
			24–240 V AC/DC	3RS11 21-1DW40

Analog adjustable evaluation devices with one and two threshold values. For analog adjustable devices, the threshold values and the hysteresis from 2 to 20% are set using a rotary potentiometer. For devices with 2 threshold values, the selectable hysteresis only acts on threshold value 1. For the second threshold value, the hysteresis is permanently set to 5%. This series of products was developed for applications where a setting accuracy of ± 5% is sufficient.

Screw terminal **1**
Spring-loaded terminal **2**

Under www.siemens.com/temperature, you will find the right sensor.

3RS10/3RS11 and 3RS20/3RS21 Temperature Monitoring Relays

Digitally adjustable relays

These relays are used to measure temperatures in solid, liquid and gaseous mediums. They monitor temperatures to evaluate whether they lie within a specific operating range (window function). The devices also present a good alternative to temperature controllers in the low-end range.



Your advantages:

- Simple to operate without complex menu prompting
- 2- or 3-conductor resistance sensors can be connected
- Versions available in °Fahrenheit
- All versions have removable terminals
- All versions with either screw terminals or with spring-loaded terminals

Applications:

- Protecting equipment and the environment
- Temperature monitoring for process quantities – e.g. in the packaging industry or galvanizing systems
- Temperature monitoring for heating systems
- Monitoring exhaust gas temperatures
- HVAC systems, solar collectors, heat pumps or warm-water supplies
- Motor, bearing and gear oil temperature monitoring
- Cooling liquids temperature monitoring

3RS10/3RS11 temperature monitoring relays

Sensor	Measuring range (measuring range limit depends on the sensor)	Rated control supply voltage V_s 50–60 Hz AC	Order No.
Digitally adjustable, 2 threshold values, 45 mm wide; 1 CO + 1 CO + 1 NO, memory function can be enabled using an external jumper. Relay parameters have a holding on supply failure function			
PT100/1000; KTY83/84; NTC (resistance sensor) ¹⁾	–50...+500 °C	24 V AC/DC 24–240 V AC/DC	3RS10 40-□GD50 3RS10 40-□GW50
	–50...+932 °F	24 V AC/DC 24–240 V AC/DC	3RS20 40-□GD50 3RS20 40-□GW50
Type J, K, T, E, N (thermoelement)	–99...+999 °C	24 V AC/DC 24–240 V AC/DC	3RS11 40-□GD60 3RS11 40-□GW60
	–99...+1830 °F	24 V AC/DC 24–240 V AC/DC	3RS21 40-□GD60 3RS21 40-□GW60
Digitally adjustable, 2 threshold values, 45 mm wide; 1 CO + 1 CO + 1 NO, tripped state and relay parameters are saved using a holding on supply failure function			
PT100/1000; KTY83/84; NTC (resistance sensor) ¹⁾	–50...+750 °C	24 V AC/DC 24–240 V AC/DC	3RS10 42-□GD70 3RS10 42-□GW70
	–99...+1800 °C	24 V AC/DC 24–240 V AC/DC	3RS11 42-□GD80 3RS11 42-□GW80

Motor monitoring relays, digitally adjustable for up to 3 sensors, 45 mm wide; 1 CO + 1 CO + 1 NO

Sensor	No. of sensors	Measuring range	Rated control supply voltage V_s	Order No.
PT100/1000; KTY83/84; NTC (resistance sensor) ¹⁾	1 to 3 sensors	–50...+500 °C	24–240 V AC/DC	3RS10 41-□GW50
		–50...+932 °F	24–240 V AC/DC	3RS20 41-□GW50

¹⁾ NTC type: B57227-K333-A1 (100 °C: 1.8 kΩ; 25 °C: 32.762 kΩ)

Screw terminal **1**
Spring-loaded terminal **2**

The short-circuit and wire breakage detection, as well as the measuring range are restricted, depending on the sensor type:

Measuring ranges in °C for thermoelements

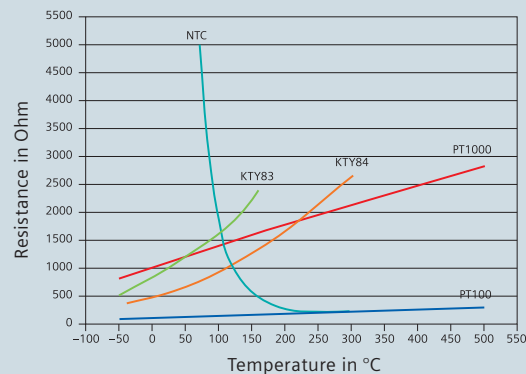
Sensor type	Short circuit	Wire breakage	3RS11 40 measuring range	3RS11 42 measuring range
J	–	x	–99...999	–99...1200
K	–	x	–99...999	–99...1350
T	–	x	–99...400	–99...400
E	–	x	–99...999	–99...999
N	–	x	–99...999	–99...999
S	–	x	–	0...1750
R	–	x	–	0...1750
B	–	x	–	400...1800

Measuring ranges in °C for resistance sensors

Sensor type	Short circuit	Wire breakage	3RS10 40 measuring range	3RS10 42 measuring range
PT100	x	x	–50...500	–50...750
PT1000	x	x	–50...500	–50...500
KTY83-110	x	x	–50...175	–50...175
KTY84	x	x	–40...300	–40...300
NTC ¹⁾	x	–	80...160	80...160

¹⁾ NTC type: B57227-K333-A1 (100 °C: 1.8 kΩ; 25 °C: 32.762 kΩ)

Characteristics of the most important resistance temperature sensors



Digitally adjustable evaluation units

Temperature monitoring relays distinguish themselves due to the fact that they are extremely easy to operate. The actual temperature is always displayed on the three-digit LED display. A dedicated relay with one NO contact is integrated to monitor the sensor. The relay is switched-off in the parameterizing mode. The following parameters can be set:

- Sensor type
- 2 threshold values J1, J2
- 1 hysteresis; this acts on both thresholds (0–99 K)
- 1 delay time; this acts on both thresholds (0–999 s)
- Either the open-circuit/closed-circuit principle can be selected
- Function: Overtemperature/undertemperature (overrange/underrange) or window monitoring within a defined range

Versions with a wide-range voltage have electrical isolation. The temperature ranges are dependant on the sensor type.

Under www.siemens.com/temperature, you will find the right sensor.

Coupling Relays – Narrow Design

3TX70 relay couplers

3TX70 relay couplers are available in two basic versions. The 3TX7004/05 is only 6.2 mm wide: taking up a lot less space in the electrical cabinet. Then there is the 3TX7002/03 series: These devices are suitable for mounting in small electrical cabinets with a low depth and short distances between the mounting rails. Both series are available with an extensive range of input and output couplers.



Your advantages: 3TX7002/03 and 3TX7004/05

- Operating range from 0.7 to 1.25 V_s at 24 V DC up to 60 °C
- Protective circuit is integrated in the input
- Connection comb and cable to connect voltages at the same potential
- Manual-0-automatic switch for easier commissioning

Your advantages: 3TX7014 and 3TX7015

- Plug-in relays that can be quickly replaced with preassembled wiring
- Conductors are introduced and clamped from the front – therefore shorter wiring times
- Tested, complete devices reduce installation times
- Individual relays are available as spare parts
- Relay version with hard-gold-plated contacts – therefore achieving a high contact reliability

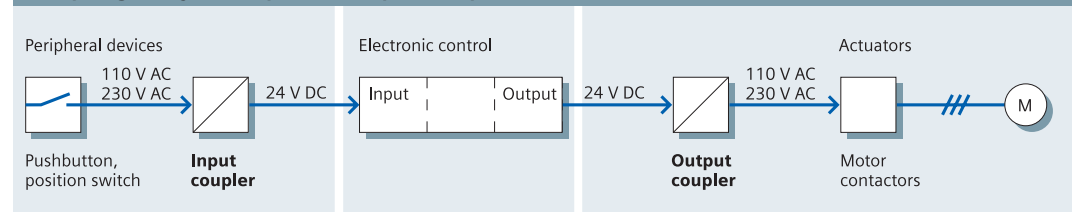
Applications:

- Electrical isolation
- Voltage conversion – e. g. from 24 V DC to 230 V AC
- Signal amplification
- Contact multiplication
- General relay controls
- Overvoltage and EMC protection of controls

Engineering information:

When selecting the interface for rated control supply voltages of 110 V AC and 230 V AC, the maximum permissible cable length must be carefully observed. The special 3TX700-...05 relay can be used for longer cables.

Coupling relays as input or output coupler



3TX701 relay couplers, plug-in

Plug-in socket couplers, complete with relay

Contact	Rated control supply voltage V _s	W x H x D in mm	Hard-gold-plated	M-0-A switch	Order No.
1 NO	24 V DC	6.2 x 89.5 x 92	–	–	3TX701□-1AM00
1 CO	24 V DC	6.2 x 89.5 x 92	–	–	3TX701□-1BM00
	24 V AC/DC	6.2 x 89.5 x 92	–	–	3TX701□-1BB00
	115 V AC/DC	6.2 x 89.5 x 92	–	–	3TX701□-1BE00
	230 V AC/DC	6.2 x 89.5 x 92	–	–	3TX701□-1BF00

Plug-in socket couplers, complete with relay and hard-gold-plated contacts

1 CO	24 V DC	6.2 x 89.5 x 92	yes	–	3TX701□-1BM02
	24 V AC/DC	6.2 x 89.5 x 92	yes	–	3TX701□-1BB02
	115 V AC/DC	6.2 x 89.5 x 92	yes	–	3TX701□-1BE02
	230 V AC/DC	6.2 x 89.5 x 92	yes	–	3TX701□-1BF02

Accessories

Connecting comb, 16-pin	3TX7014-7AA00
Potential isolation plate	3TX7014-7CE00

Screw terminal **4**
Spring-loaded terminal **5**

3TX700 relay couplers, not pluggable

3TX7004/05 – output couplers with relay output

Contact	Rated control supply voltage V _s	W x H x D in mm ¹⁾	Hard-gold-plated	M-0-A switch	Order No.
1 CO	24 V AC/DC	6.2 x 80 x 84	–	–	3TX700□-1LB00
			yes	–	3TX700□-1LB02
	230 V AC/DC	12.5 x 80 x 84	–	yes	3TX7004-1BB10
		6.2 x 80 x 84	–	–	3TX700□-1LF00
		12.5 x 80 x 84	–	–	3TX7004-1BF05 ²⁾
1 NO	24 V AC/DC	6.2 x 80 x 84	–	–	3TX700□-1MB00
	230 V AC/DC	6.2 x 80 x 84	–	–	3TX700□-1MF00

3TX7004/05 – input couplers with relay output

1 NO	230 V AC/DC	6.2 x 80 x 84	yes	–	3TX700□-2MF02
	110 V AC/DC	6.2 x 80 x 84	yes	–	3TX7004-2ME02
	24 V AC/DC	6.2 x 80 x 84	yes	–	3TX700□-2MB02

¹⁾ With 3TX7004 (screw connection), the height amounts to 79 mm²⁾ For large line lengths up to 350 m

Screw terminal **4**
Spring-loaded terminal **5**

3TX7002/03 – for small tier spacings or flat control cabinets – output couplers with relay output

Output	Rated control supply voltage V _s	W x H x D in mm	Hard-gold-plated		Order No.
1 NO	24 V AC/DC	11.5 x 60 x 62	–		3TX700□-1AB00
		11.5 x 60 x 62	yes		3TX700□-1AB02
1 CO	24 V AC/DC	17.5 x 60 x 62	–		3TX700□-1BB00
	230 V AC/DC	17.5 x 60 x 62	–		3TX7002-1BF00
2 NO	24 V AC/DC	22.5 x 60 x 62	–		3TX700□-1CB00
2 CO	24 V AC/DC	22.5 x 60 x 62	yes		3TX700□-1FB02

3TX7002/03 – input couplers with relay output

1 NO	230 V AC/DC	11.5 x 60 x 62	–		3TX700□-2AF00
	230 V AC/DC	11.5 x 60 x 62	–		3TX7002-2AF05
	110 V AC/DC	11.5 x 60 x 62	–		3TX7002-2AE00
	24 V AC/DC	11.5 x 60 x 62	–		3TX7002-2AB00
1 CO	230 V AC/DC	17.5 x 60 x 62	yes		3TX7002-2BF02

Accessories

Connecting cable with 24 connecting points for 3TX70	3TX7004-8BA00
Connecting comb with 24 connecting points for 3TX7004, 6.2 mm width and screw connection	3TX7004-8AA00

Screw terminal **2**
Spring-loaded terminal **3**

Coupling Relays – Narrow Design

3TX70 semiconductor couplers

Coupling modules are available either with relays or semiconductors. Semiconductor couplers offer some significant advantages: The electronic components are extremely reliable and have a very long service life (refer to the diagram below). The input coupler combines the best of both worlds – improved technical features and a lower price. When considering output couplers, the question of “relay or semiconductor” needs to be taken into account as well as the making/breaking capacity and the number of operating cycles. If a relay has to be replaced just once during the complete lifetime of a machine, then a semiconductor coupler will have paid for itself.



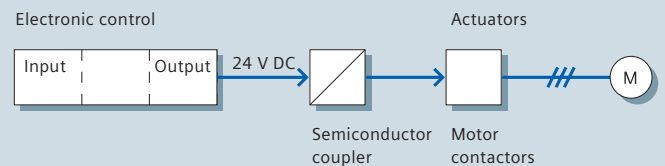
Your advantages:

- Reliable input couplers with semiconductor output
- Graduated series of output couplers with semiconductors
- Extremely long electrical life
- Extremely high contact reliability
- High DC making/breaking capacity
- Short switching times

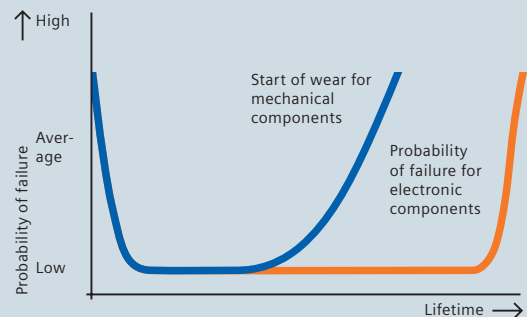
Applications:

- Providing electrical isolation, converting voltages
- Switching DC loads
- Switching capacity loads
- High number of switching cycles
- Overvoltage and EMC protection of controls

Use of semiconductor couplers



Comparison of lifetimes



Electronic coupling modules have a significantly higher lifetime than electromechanical devices.



3TX70 semiconductor couplers**3TX7004/05 – the narrow space saver – output couplers with semiconductor output, 1 NO contact**

Rated control supply voltage V_s	W x H x D in mm ¹⁾	Max. switching current	Switching Voltage	Min. load current	Short-time load capacity	M-0-A-switch	Order No.
24 V DC	6.2 x 80 x 84	0.5 A	≤ 48 V DC	–	1.5 A/20 ms	–	3TX700□-3AB04
	6.2 x 80 x 84	1.5 A	≤ 30 V DC	–	Short-circuit-proof	–	3TX700□-3PB54
	6.2 x 80 x 84	3 A	≤ 30 V DC	–	Short-circuit-proof	–	3TX700□-3PB74
	12.5 x 80 x 84	5 A	≤ 30 V DC	0.5 A	Short-circuit-proof	–	3TX700□-3AC04
	12.5 x 80 x 84	5 A	≤ 30 V DC	0.5 A	Short-circuit-proof	yes	3TX700□-3AC14
	12.5 x 80 x 84	2 A	24–250 V AC	0.05 A	100 A/20 ms	–	3TX700□-3AC03
110–230 V AC	6.2 x 80 x 84	3 A	≤ 30 V DC	–	Short-circuit-proof	–	3TX700□-3PG74

Input couplers with semiconductor output, 1 NO contact

110–230 V AC	6.2 x 80 x 84	0.1 A	≤ 30 V DC	–	0.2 A/3 ms	–	3TX700□-4PG24
--------------	---------------	-------	-----------	---	------------	---	---------------

¹⁾ With 3TX7004 (screw connection), the height amounts to 79 mm

Screw terminal 
Spring-loaded terminal 

3TX7002 – for low tier heights – output couplers with semiconductor output, 1 NO contact, screw connection

Rated control supply voltage V_s	W x H x D in mm	Max. switching current	Switching voltage	Min. load current	Short-time load capacity	Order No.
24 V DC	12.5 x 60 x 62	1.8 A	48–264 V AC	0.06 A	20 A/20 ms	3TX7002-3AB00
24 V DC	11.5 x 60 x 62	1.5 A	≤ 60 V DC	–	4 A/0.2 ms	3TX7002-3AB01

Input couplers with semiconductor output, 1 NO contact

110–230 V AC	12.5 x 60 x 62	0.1 A	≤ 60 V DC	–	1 A/20 ms	3TX7002-4AG00
24 V AC/DC	12.5 x 60 x 62	0.1 A	≤ 30 V DC	–	1 A/20 ms	3TX7002-4AB00

Accessories

Connecting cable with 24 connecting points for 3TX70	3TX7004-8BA00
Connecting comb with 24 connecting points for 3TX7004, 6.2 mm width and screw connection	3TX7004-8AA00



Using the accessories it is easy to insert a jumper between the same voltage levels.

Coupling Relays with Industrial Housing

3RS18 relay couplers

The 3RS18 relay couplers set standards: With a wide voltage range extending from 24 V AC/DC to 240 V, they represent an outstanding highlight in the coupling market. All of these devices are built in a well-proven, rugged 22.5 mm wide housing. Relays with 1, 2 and 3 changeover contacts are available in both screw and spring-loaded terminal versions. These relays are also available in combination and wide-range voltage with hardgold-plated contacts for an especially high contact reliability – even at low current levels. Due to the proven, rugged housing, you can enjoy the benefits of user-friendly connection systems, with removable terminals – just the same as our timing relays. 2 conductors can be connected at each terminal point.



3RS18 relay couplers in a rugged, industrial housing 22.5 mm wide		
Rated control supply voltage V _s 50/60 Hz	Contact versions	Order No.
Wide-range voltage 24–240 V AC/DC	2 CO	3RS18 00-□BW00
	3 CO	3RS18 00-□HW00
	3 CO hard-gold-plated	3RS18 00-□HW01
Combination voltage 24 V AC/DC and 110–120 V AC	1 CO	3RS18 00-□AQ00
	2 CO	3RS18 00-□BQ00
	3 CO	3RS18 00-□HQ00
24 V AC/DC and 220–240 V AC	3 CO hard-gold-plated	3RS18 00-□HQ01
	1 CO	3RS18 00-□AP00
	2 CO	3RS18 00-□BP00
	3 CO	3RS18 00-□HP00
	3 CO hard-gold-plated	3RS18 00-□HP01

Screw terminal ①
Spring-loaded terminal ②

Your advantages:

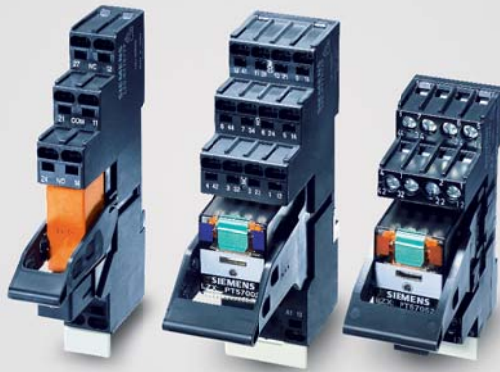
- New, worldwide: One device for all voltages
- Lower costs due to fewer versions
- Especially high contact reliability even at low currents
- Removable terminals with screw terminals or alternatively with innovative spring-loaded terminals

Applications:

- Everywhere that contacts which are electronics-compatible are required and where devices with wide-range voltage are used
- Due to the hard-gold-plated contacts, predestined for PLC I/O

Coupling Relays with Plug-In Relays

LZS plug-in relay couplers



Plug-in relay couplers are available both as complete devices and as single modules¹⁾ for self-assembly or spare parts requirements. The range is divided into three designs: RT, PT and MT.

Your advantages:

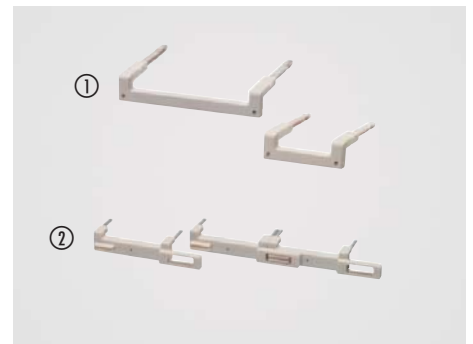
- All designs with tried-and-tested screw terminals or push-in spring-loaded terminals
- Wiring without tools and vibration-proof connection due to innovative push-in spring-loaded terminals
- Socket with logical separation for ease of wiring
- Tested AC-15 and DC-13 switching capacity
- Available coil voltages: 24 V DC, 24 V AC, 115 V AC, 230 V AC
- Hard-gold-plated contacts for optimum interaction with electronic controls

Applications:

- As coupling relay to couple inputs and outputs for electronic controls
- Multiplying contacts
- Switching small loads
- As measured-value changeover switch

Engineering information:

The test lever of the PT relay does not feature a latching mechanism. If the level is pressed further until a movement of 90° is reached, two small lugs break off and the test lever can be set to latching. When using plug-in relays with voltages of 60 Hz AC, the lower response value has to be increased by 10 %, as the power loss slightly decreases.



① Wiring bracket for push-in spring-loaded terminal socket and ② wiring comb for screw terminal socket

Switching capacity of the plug-in relays	AC-15, 230 V	DC-13, 24 V
LZX:RT 1 CO (changeover contact)	6 A	2 A
LZX:RT 2 CO	3 A	2 A
LZX:PT 2 CO	5 A	5 A
LZX:PT 3 CO	5 A	5 A
LZX:PT 4 CO	4 A	5 A
LZX:MT 3 CO	5 A	2 A

Designs

LZS:RT
1 or 2 CO contacts
AC-1: 16/8 A
width: 15.5 mm



LZS:PT
2, 3 or 4 CO contacts
AC-1: 12/10/6 A
width: 28 mm



LZS:MT
3 CO contacts
AC-1: 10 A
width: 38 mm



1) Note: Order number for plug-in relay coupler as complete device or accessory starting with LZS; order number for plug-in relay as single module starting with LZX

Logical separation:

The connections of the contacts and the connections of the coil are arranged on different sides, e. g. contacts at the top and coils at the bottom. This allows for a clearer wiring arrangement. The logical separation is not necessarily a safe isolation.

Safe isolation:

The safe isolation is the isolation which prevents the passover of a circuit's voltage to another circuit with sufficient safety (DIN VDE 106 Part 101).

Plug-in relay couplers – LZS complete modules (socket, plug-in relay, hold/eject clip, LED module and inscription label)

Design	Rated control supply voltage V _s	Contacts	Width in mm	Order No.
Complete devices, 11- and 14-pole, PT range				
Complete device with plug-in socket (screw terminal, standard) for snapping onto 35 mm mounting rail, consisting of: plug-in relay, plug-in socket standard with screw terminal, LED module (24 V DC LED module with free-wheeling diode, AC without free-wheeling diode), hold/eject clip and inscription plate	24 V DC	3 CO	28	LZS:PT3A5L24
	24 V AC			LZS:PT3A5R24
	115 V AC			LZS:PT3A5S15
	230 V AC			LZS:PT3A5T30
	24 V DC	4 CO	28	LZS:PT5A5L24
	24 V AC			LZS:PT5A5R24
	115 V AC			LZS:PT5A5S15
Complete device with plug-in socket (screw terminal, logical separation) for snapping onto 35 mm mounting rail, consisting of: plug-in relay, plug-in socket with screw terminal and logical separation, LED module (24 V DC LED module with free-wheeling diode, AC without free-wheeling diode), hold/eject clip and inscription plate	230 V AC			LZS:PT5A5T30
	24 V DC	4 CO	28	LZS:PT5B5L24
	24 V AC			LZS:PT5B5R24
	115 V AC			LZS:PT5B5S15
Complete device with plug-in socket (push-in spring-loaded terminal, logical separation) for snapping onto 35 mm mounting rail, consisting of: plug-in relay, plug-in socket with spring-loaded terminal and logical separation, LED module (24 V DC LED module with free-wheeling diode, AC without free-wheeling diode), hold/eject clip and inscription plate	230 V AC			LZS:PT5B5T30
	24 V DC	4 CO	28	LZS:PT5D5L24
	24 V AC			LZS:PT5D5R24
	115 V AC			LZS:PT5D5S15
Complete device with plug-in socket (push-in spring-loaded terminal, logical separation) for snapping onto 35 mm mounting rail, consisting of: plug-in relay, plug-in socket with spring-loaded terminal and logical separation, LED module (24 V DC LED module with free-wheeling diode, AC without free-wheeling diode), hold/eject clip and inscription plate	230 V AC			LZS:PT5D5T30
Complete devices, 8-pole, 5 mm pinning, RT range				
Complete device with plug-in socket (screw terminal, standard) for snapping onto 35 mm mounting rail, consisting of: plug-in relay, plug-in socket standard with screw terminal, LED module (24 V DC LED module with free-wheeling diode, AC without free-wheeling diode), hold/eject clip and inscription plate	24 V DC	1 CO	15.5	LZS:RT3A4L24
	24 V DC	2 CO		LZS:RT4A4L24
	230 V AC	1 CO		LZS:RT3A4T30
	230 V AC	2 CO		LZS:RT4A4T30
	24 V AC	1 CO	15.5	LZS:RT3A4R24
	24 V AC	2 CO		LZS:RT4A4R24
	115 V AC	1 CO		LZS:RT3A4S15
	115 V AC	2 CO		LZS:RT4A4S15
Complete device with plug-in socket (screw terminal, logical separation) for snapping onto 35 mm mounting rail, consisting of: plug-in relay with safe isolation, plug-in socket with screw terminal and logical separation, LED module (24 V DC LED module with free-wheeling diode, AC without free-wheeling diode), hold/eject clip and inscription plate	24 V DC	1 CO	15.5	LZS:RT3B4L24
	24 V DC	2 CO		LZS:RT4B4L24
	230 V AC	1 CO		LZS:RT3B4T30
	230 V AC	2 CO		LZS:RT4B4T30
	24 V AC	1 CO	15.5	LZS:RT3B4R24
	24 V AC	2 CO		LZS:RT4B4R24
	115 V AC	1 CO		LZS:RT3B4S15
	115 V AC	2 CO		LZS:RT4B4S15
Complete device with plug-in socket (push-in spring-loaded terminal, logical separation) for snapping onto 35 mm mounting rail, consisting of: plug-in relay, plug-in socket with spring-loaded terminal and logical separation, LED module (24 V DC LED module with free-wheeling diode, AC without free-wheeling diode), hold/eject clip and inscription plate	24 V DC	1 CO	15.5	LZS:RT3D4L24
	24 V DC	2 CO		LZS:RT4D4L24
	230 V AC	1 CO		LZS:RT3D4T30
	230 V AC	2 CO		LZS:RT4D4T30
	24 V AC	1 CO	15.5	LZS:RT3D4R24
	24 V AC	2 CO		LZS:RT4D4R24
	115 V AC	1 CO		LZS:RT3D4S15
	115 V AC	2 CO		LZS:RT4D4S15

Plug-in relay couplers – single modules for self-assembly

RT range						
Plug-in relays						
Control supply voltage	Contacts	LED	Free-wheeling diode	Logical separation	Hard-gold-plating	Order No.
12 V DC	2 CO	–	–	–	–	LZX:RT424012
24 V DC	1 CO	–	–	–	–	LZX:RT314024
24 V DC	2 CO	–	–	–	–	LZX:RT424024
24 V AC	1 CO	–	–	–	–	LZX:RT314524
24 V AC	2 CO	–	–	–	–	LZX:RT424524
115 V AC	1 CO	–	–	–	–	LZX:RT314615
115 V AC	2 CO	–	–	–	–	LZX:RT424615
230 V AC	1 CO	–	–	–	–	LZX:RT314730
230 V AC	2 CO	–	–	–	–	LZX:RT424730
24 V DC	1 CO	–	–	–	yes	LZX:RT315024
230 V AC	1 CO	–	–	–	yes	LZX:RT315730

Accessories, suitable for 1 and 2 CO

Plug-in socket with screw terminal for snapping onto mounting rail	no logical separation (standard)	LZS:RT78725
	with logical separation	LZS:RT78726
Plug-in socket with push-in spring-loaded terminal for snapping onto mounting rail	with logical separation	LZS:RT7872P
Hold/eject clip	–	LZS:RT17016
Inscription plate		LZS:RT17040
Wiring bracket for push-in spring-loaded terminal socket	2-pole	LZS:RT170P1
Wiring comb for screw terminal socket	8-pole	LZS:RT170R8

PT range**Plug-in relays**

Control supply voltage	Contacts	LED	Free-wheeling diode	Hard-gold-plating	Test lever	Order No.
24 V DC	2 CO	–	–	–	yes	LZX:PT270024
24 V DC	3 CO	–	–	–	yes	LZX:PT370024
24 V DC	4 CO	–	–	–	yes	LZX:PT570024
24 V DC	4 CO	–	–	–	–	LZX:PT520024
24 V DC	4 CO	–	–	yes	yes	LZX:PT580024
24 V AC	2 CO	–	–	–	yes	LZX:PT270524
24 V AC	3 CO	–	–	–	yes	LZX:PT370524
24 V AC	4 CO	–	–	–	yes	LZX:PT570524
115 V AC	2 CO	–	–	–	yes	LZX:PT270615
115 V AC	3 CO	–	–	–	yes	LZX:PT370615
115 V AC	4 CO	–	–	–	yes	LZX:PT570615
230 V AC	2 CO	–	–	–	yes	LZX:PT270730
230 V AC	3 CO	–	–	–	yes	LZX:PT370730
230 V AC	4 CO	–	–	–	yes	LZX:PT570730
230 V AC	4 CO	–	–	yes	yes	LZX:PT580730
230 V AC	4 CO	–	–	–	–	LZX:PT520730

Accessories

Plug-in socket with screw terminal for snapping onto mounting rail	2 CO	no logical separation	LZS:PT78720
	3 CO		LZS:PT78730
	4 CO		LZS:PT78740
	2 CO	with logical separation	LZS:PT78722
	4 CO		LZS:PT78742
Plug-in socket with push-in spring-loaded terminal for snapping onto mounting rail	2 CO	with logical separation	LZS:PT7872P
	4 CO		LZS:PT7874P
Hold/eject clip	2/3/4 CO	with logical separation	LZS:PT17021
Hold/eject clip for screw terminal socket	2/3/4 CO	no logical separation	LZS:PT17024
Inscription plate			LZS:PT17040
Wiring bracket for push-in spring-loaded terminal socket	2-pole		LZS:PT170P1
Wiring comb for screw terminal socket	6-pole		LZS:PT170R6

Accessories for the RT and PT range

LED module red	Control supply voltage	24 V DC	Free-wheeling diode	LZS:PTML0024
		24 V AC/DC	–	LZS:PTML0524
		110–230 V AC	–	LZS:PTML0730
LED module green		24 V DC	Free-wheeling diode	LZS:PTMG0024
		24 V AC/DC	–	LZS:PTMG0524
		110–230 V AC	–	LZS:PTMG0730
Free-wheeling diode		6–230 V DC	Free-wheeling diode	LZS:PTMT00A0
RC element		24–48 V AC	–	LZS:PTMU0524
		110–230 V AC	–	LZS:PTMU0730

MT range**Plug-in relays**

Control supply voltage	Contacts	LED	Free-wheeling diode	Order No.
24 V DC	3 CO	–	–	LZX:MT321024
24 V DC	3 CO	yes	–	LZX:MT323024
24 V AC	3 CO	–	–	LZX:MT326024
24 V AC	3 CO	yes	–	LZX:MT328024
115 V AC	3 CO	–	–	LZX:MT326115
115 V AC	3 CO	yes	–	LZX:MT328115
230 V AC	3 CO	–	–	LZX:MT326230
230 V AC	3 CO	yes	–	LZX:MT328230

Accessories

Plug-in socket with screw terminal for snapping onto mounting rail, 11-pole	LZS:MT78750
Hold clip	LZS:MT28800

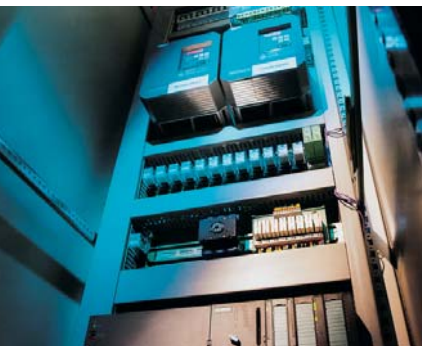
3RS17 Interface Converters

Normalized signal and universal converters

Interface converters are mainly used to electrically isolate and convert analog signals. Sensors/actuators and controls generally have different power supply units, and therefore require electrical isolation in the signal circuit. This is either integrated in the control or is implemented using an interface converter.

A signal must be converted into another signal if, for instance, a voltage signal needs to be transmitted over a long distance as current signal – or if the output of a sensor and the input of a control system are not compatible with one another.

Frequency outputs can be used for an additional application. In this case, the input signal is converted into a proportional frequency. This means that analog signals can be processed with digital inputs. This is important if the control does not have provision for an analog input or if all of its analog inputs are already assigned. This can occur, for example, when devices are retrofitted.



Your advantages:

- Space-saving design
- Easy-to-set universal converter
- Converters with frequency output
- All ranges are fully calibrated
- Unified family of devices – the ideal solution for every application
- Integrated manual-automatic switch with adjustable setpoint
- Outputs are short-circuit-proof
- Up to 30 V – protected against damage caused by faulty wiring

Applications:

- Electrically isolating analog signals
- Converting analog signals
- Converting analog signals into a frequency
- Converting non-normalized into normalized signals
- Overvoltage protection for analog inputs

Engineering information:

Passive converters draw the power they require from the analog signal. They do not require their own power supply. For 2-way isolation, the input is electrically isolated from the output and from the power supply, output and power supply are at the same potential. For 3-way isolation, all of the three circuits are isolated from one another.

3RS17 interface converters



Input	Output	Width	H-A switch	Rated control supply voltage V _s	Electrical isolation	Order No.
0–10 V	0–10 V	6.2 mm	–	24 V AC/DC	2-way	3RS1700-□AD00
0–10 V	0–20 mA	6.2 mm	–	24 V AC/DC	2-way	3RS1700-□CD00
0–10 V	4–20 mA	6.2 mm	–	24 V AC/DC	2-way	3RS1700-□DD00
0–20 mA	0–10 V	6.2 mm	–	24 V AC/DC	2-way	3RS1702-□AD00
0–20 mA	0–20 mA	6.2 mm	–	24 V AC/DC	2-way	3RS1702-□CD00
0–20 mA	4–20 mA	6.2 mm	–	24 V AC/DC	2-way	3RS1702-□DD00
4–20 mA	0–10 V	6.2 mm	–	24 V AC/DC	2-way	3RS1703-□AD00
4–20 mA	0–20 mA	6.2 mm	–	24 V AC/DC	2-way	3RS1703-□CD00
4–20 mA	4–20 mA	6.2 mm	–	24 V AC/DC	2-way	3RS1703-□DD00
0–20 mA	0–20 mA	6.2 mm	–	Passive converter	2-way	3RS1720-□ET00
0–20 mA	0–20 mA	12.5 mm	–	Passive converter	2-way	3RS1721-□ET00
2 x 0–20 mA	2 x 0–20 mA	12.5 mm	–	Passive converter	2-way	3RS1722-□ET00

Selectable standard interface converter

0–10 V 0/4–20 mA selectable	0–10 V 0/4–20 mA selectable	6.2 mm	–	24 V AC/DC	2-way	3RS1705-□FD00
		17.5 mm	–	24–240 V AC/DC	3-way	3RS1705-□FW00
0–10 V 0/4–20 mA selectable	0–10 V 0/4–20 mA selectable	17.5 mm	yes	24 V AC/DC	2-way	3RS1725-□FD00
		17.5 mm	yes	24–240 V AC/DC	3-way	3RS1725-□FW00
0–10 V 0/4–20 mA selectable	0–50 Hz 0–100 Hz 0–1 kHz 0–10 Hz selectable	6.2 mm	–	24 V AC/DC	2-way	3RS1705-□KD00
		17.5 mm	–	24–240 V AC/DC	3-way	3RS1705-□KW00

Universal converters

0–60 mV 0–100 mV 0–300 mV 0–500 mV 0–1 V 0–2 V 0–5 V 0–10 V 0–20 V 2–10 V 0–5 mA 0–10 mA 0–20 mA 4–20 mA ± 5 mA ± 20 mA	0–10 V 0/4–20 mA selectable	17.5 mm	–			
				24 V AC/DC	2-way	3RS1706-□FD00
				24 V AC/DC	3-way	3RS1706-□FE00
				24–240 V AC/DC	3-way	3RS1706-□FW00

Screw terminal 
Spring-loaded terminal 

3TG10 Power Relays and SITOP Power Supplies

Wherever small, low-noise relays or contactors are required, the 3TG10 power relays come through with flying colors. At a low cost, these power relays are suitable for basic controls, and especially for use in large series equipment and control systems. They are ideal for applications which only need an auxiliary contact and not an overload relay – yet at the same time demand a higher making/breaking capacity, additional switching voltage and a longer lifetime.



Your advantages:

- Can be mounted in any position, hum-free
- Protective separation
- Can be screwed or inserted
- Integrated auxiliary contact
- AC-3 power: 4 kW/400 V
- Operating current I_e /AC-1: 20 A/400 V
- Inrush current per phase: 90 A
- Integrated overvoltage damping
- Slimline design, only 36 mm wide

Applications:

- Domestic appliances and installations
- Hoisting systems: Small elevators, elevating platforms
- Building services, hum-free devices in building systems, e. g. in hospitals

Engineering information:

When the three main current paths conduct 20 A, for $I > 10$ A for the fourth current path: Permissible ambient temperature is 40 °C.

3TG10 power relays

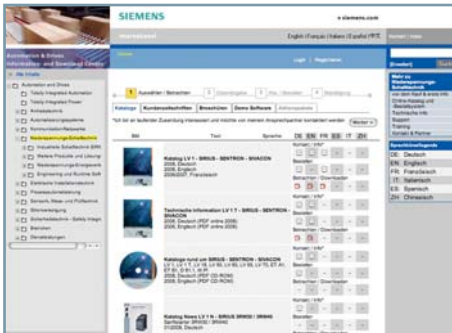
AC-1 operating current I_e at 400 V (A)	AC-1 power of three-phase loads at 50 Hz 400 V (kW)	AC-2 and AC-3 operating current at 400 V (A)	AC-2 and AC-3 three-phase loads at 50 Hz 400 V (kW)	Connection type	Contacts	Rated control supply voltage V_s	Order No.
20	13	8.4	4	Screw terminal	4 NO	230 V AC	3TG1010-0AL2
						110 V AC	3TG1010-0AG2
						24 V AC	3TG1010-0AC2
						24 V DC	3TG1010-0BB4
20	13	8.4	4	Screw terminal	3 NO + 1 NC	230 V AC	3TG1001-0AL2
						110 V AC	3TG1001-0AG2
						24 V AC	3TG1001-0AC2
						24 V DC	3TG1001-0BB4
16	10	8.4	4	Flat, spade terminal	4 NO	230 V AC	3TG1010-1AL2
						110 V AC	3TG1010-1AG2
						24 V AC	3TG1010-1AC2
						24 V DC	3TG1010-1BB4
16	10	8.4	4	Flat, spade terminal	3 NO + 1 NC	230 V AC	3TG1001-1AL2
						110 V AC	3TG1001-1AG2
						24 V AC	3TG1001-1AC2
						24 V DC	3TG1001-1BB4

Service and Support

Information

Planning

Ordering



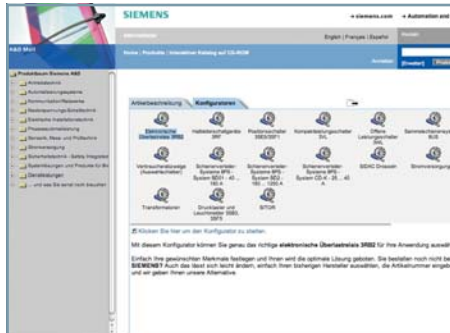
Easy download of catalogs and information material

The latest catalogs, customer magazines, brochures, demo software and special bargain packages are available for ordering or download from our Information and Download Center:
www.siemens.com/lowvoltage/catalogs



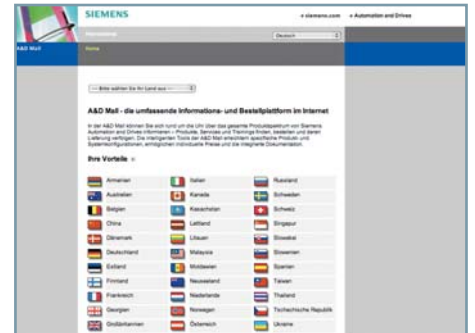
Newsletter

Always up to date: Our regular newsletter provides you with topical information on our industrial controls and power distribution products. Simply register at:
www.siemens.com/lowvoltage/newsletter



Configurators for ease of handling

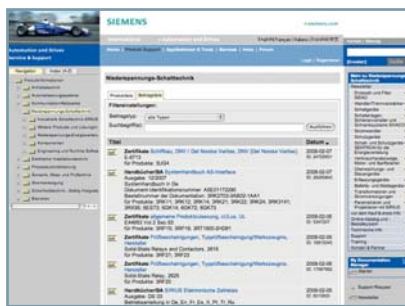
Our configurator selection is available at:
www.siemens.com/lowvoltage/configurators



E-business

24/7-access to a comprehensive information and ordering platform for products and systems of the low-voltage controls and distribution portfolio? Comprehensive information on our complete portfolio? Product selection, order tracking, service, support and training information? All this can be conveniently found at our Mall at:

www.siemens.com/lowvoltage/mall



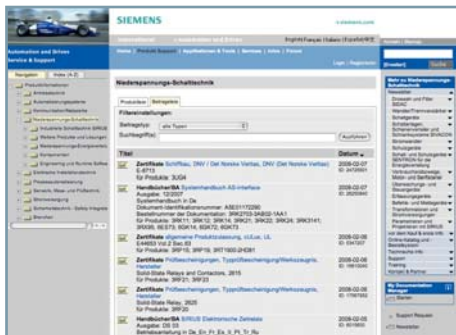
Online support

Reports and technical data sheets on our products can be found at:
www.siemens.com/lowvoltage/support

Commissioning / operation

Service

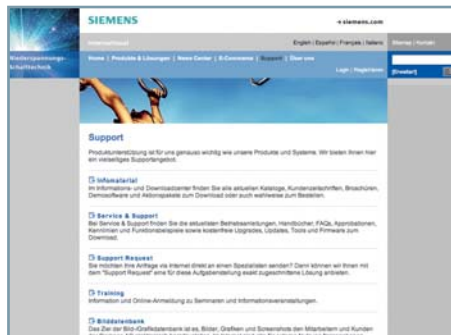
Training



Online support

Detailed technical information on our products and systems of the low-voltage controls and distribution portfolio, product support and further services and support based on helpful support tools can be found at:

www.siemens.com/lowvoltage/support



Technical Assistance

You are looking for the right product suit- ing your application? You have technical questions, require spare parts or want to localize a regional expert? Our experienced team of engineers and techni- cians will be pleased to assist you:

- Personally from Monday to Friday, 8.00 am to 5.00 pm (CET) via tele- phone support: **+49 911 895-5900**
- Via e-mail: **technical-assistance@siemens.com**
- Via fax: **+49 911 895-5907**

At

www.siemens.com/lowvoltage/technical-assistance,

you can also access the Siemens Service & Support Internet platform for Industry Automation and Drive Technologies. Here, you can search the FAQ database for information and solutions matching your task or directly send your questions to our technical consultants via the support request.



Training

Our training centers at numerous sites worldwide offer individual training pro- grams covering all fields of automation and industrial solutions. Moreover, with the help of our online courses and vari- ous learning software, you can acquire new know-how even more time- and cost-efficiently. More information on our comprehensive SITRAIN training pro- gram is available on the Internet at www.siemens.com/sitrain-cd

Or contact us personally:

- via information hotline: **+49 1805 25 36 11** or
- Fax: **+49 1805 23 56 12**

6EP1 SITOP Wide-Voltage Power Supply



The primary-clocked 6EP1 SITOP wide-voltage range power supplies in a narrow 22.5 mm housing were especially developed as controlgear for standard products if only “non-standard” power supply voltages are available and/or wide operating ranges of the supply voltage must be covered. These devices have a wide input voltage range and a 24 V DC output. This means that you can use standard devices for practically all of the power supply voltages used. The effect: You save costs for special versions and engineering time.



Your advantages:

- Only 22.5 mm wide
- Wide input voltage range
- Low weight
- High efficiency

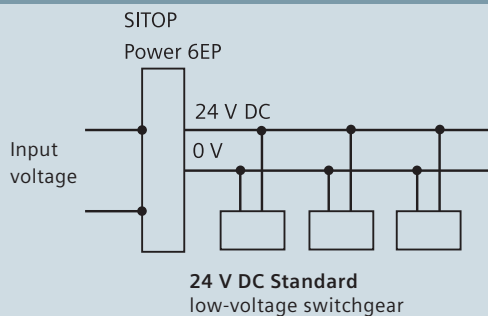
6EP1 wide-voltage range power supply for rail mounting

Input voltage	Output voltage	Output current max.	Short-circuit- and overload-proof	Order No.
93–264 V AC	24 V DC	0.5 A	yes	6EP1331-2BA10
30–264 V DC	24 V DC	0.375 A	yes	6EP1731-2BA00

Applications:

- Voltage unit for all voltage ranges
- Voltage unit for wide operating ranges

Using SITOP as voltage unit



Ordering by fax +49 911 978-3321 – CD/Z1373



☐ SIRIUS
Industrial Controls

Newsletter

Always up to date:
Our regular newsletter provides you
with topical information on all sub-
jects of industrial controls and power
distribution. Simply register at
**[www.siemens.com/lowvoltage/
newsletter](http://www.siemens.com/lowvoltage/newsletter)**

Please send the selected
information to the following
address:

Company/Department

Name

Street, Postal Code/City

Telephone/Fax

E-mail

SWITCHING

☐ SIRIUS
Solid-state
switching devices

STARTING

☐ SIRIUS
Infeed system

☐ SIRIUS Engineering
load feeders

☐ SIRIUS
Compact starter

☐ SIRIUS
Soft starter

☐ SIMATIC
ET 200pro

☐ SIRIUS
Motor starter

MONITORING
AND CONTROLLING

☐ SIRIUS
Motor management
system SIMOCODE pro

SIRIUS Relays

☐ SIRIUS
Modular safety system

☐ SIRIUS
Safety Relays

DETECTING

☐ SIRIUS
Position switches

COMMANDING
AND SIGNALING

☐ SIRIUS
Pushbuttons and
indicator lights

☐ SIRIUS
Signaling
columns and
integrated
signal lamps

☐ SIRIUS
Cable-operated
switches

SUPPLYING

☐ SIVENT
Fans

☐ SIDAC
Reactors and
filters

☐ SIDAC and SIVENT
Solutions

ENGINEERING

☐ Motor Starter ES

☐ Soft Starter ES

SIRIUS
AND MORE

☐ SIRIUS Safety
Integrated

☐ AS-Interface

☐ SIRIUS
Connection systems

☐ ECOFAST

☐ AS-i News

☐ SIRIUS
Modular system

☐ The Secrets of UL –
You have our support

Siemens AG
Industry Sector
Low-Voltage Controls and Distribution
P.O. Box 48 48
90327 NUREMBERG
GERMANY

www.siemens.com/relays

Subject to change without prior notice 04/08
Order No.: E20001-A370-P302-V8-7600
Dispo 27601
21/11693 SG.SGSX.52.8.01 PA 04085.0
Printed in Germany
© Siemens AG 2008

The information provided in this brochure contains
merely general descriptions or characteristics of
performance which in actual case of use do not always
apply as described or which may change as a result of
further development of the products. An obligation to
provide the respective characteristics shall only exist if
expressly agreed in the terms of contract.

All product designations may be trademarks or product
names of Siemens AG or supplier companies whose use
by third parties for their own purposes could violate the
rights of the owners.