

FIG. 1

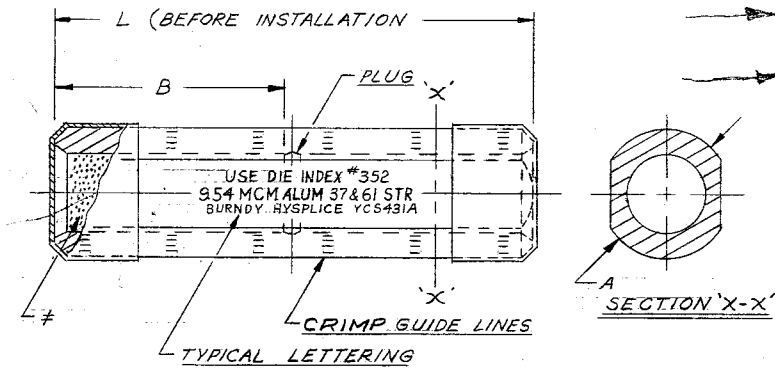
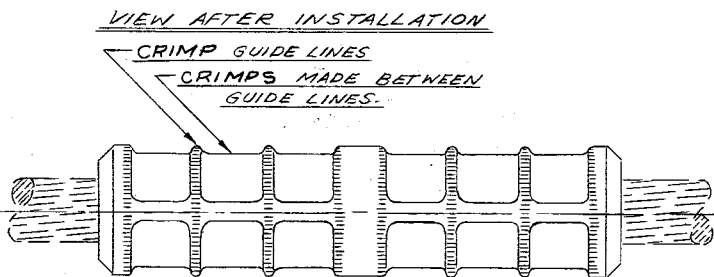


FIG. 2



MATERIAL:
ALUMINUM

NOTE:
BARRELS PARTIALLY FILLED WITH
'PENETROX' AND SEALED.

CONDUCTOR (ALUM.)		INSTALLATION DATA												
SIZE	STR.	CATALOG NO.	FIG. NO.	A	B	L	TOOL INDEX NO.	HYPRESS DIE SETS & CRIMPS PER END			REV.			
								Y35	Y34A	Y48B				
2/0 (.414)	7	YCS26A	1	.70	2.49	5.10	245	U26RYFT	2	A26RYF	2	C245	1	12
3/0 (.464)	7,19	YCS27A	1	.77	1.94	4.00	247	U27RYFT	2	A27RYF	2	C247	1	12
4/0 (.522)	7,19	YCS28A	1	.86	1.94	4.00	249	U28RYFT	2	A28RYF	2	C249	1	12
250 MCM (.574)	19	YCS29A	1	.92	2.03	4.18	616			A29AYD	3			16
266.8 MCM (.586)	7	YCS291A	1	.97	2.00	4.12	251	U30RYFT	3	A30RYF	3	C251	*2	12
300 MCM (.629)	19	YCS30A	1	1.03	2.02	4.16	322	U30AYDT	3	A30AYD	3			12
336.4 MCM (.666)	19,37	YCS301A	1	1.06	2.09	4.30	321	U301AYDT	3	A301AYD	3	C321	*2	14
397.5 MCM (.724)	19	YCS311A	2	1.19	2.72	5.60	468	U311AYDT	4	A311AYD	4			12
477 MCM (.793)	19	YCS331A	1	1.30	3.06	6.22	317, OR 426 K 1-1/8-2	U35RYFT	4			C317	2	19
500 MCM (.813)	37,61													
556.5 MCM (.856)	19,37	YCS351A	1	1.39	4.31	8.75	261, EEI-15A	U37RYFT	6			C261	2	13
350 MCM (.681)	19,37,61	YCS321R	2	1.125	3.17	6.47	490, OR 547	U321RYFT	5	A321RYF	5	C490	*3	12
600 MCM (.893)	37	YCS36AG1	1	1.36	4.31	8.75	261, EEI-15A	U37RYFT	6			C261	2	13
636 MCM (.918)	37	YCS361A	1	1.50	3.58	7.28	469					C469	2	12
795 MCM (1.026)	37,61	YCS391A	1	1.67	5.16	10.44	342, K 1-1/2					C342	3	16
1033.5 MCM (1.172)	37,61	YCS441A	2	2.12	6.12	12.38	575					C575	4	15
954 MCM (1.126)	37,61	YCS431A	2	1.84	3.69	7.50	352					C352	2	12
336.4 MCM (.666)	19,37	YCS301AG1	1	1.06	2.59	5.38	321	U301AYDT	4	A301AYD	4	C321	2	14
4/0 (.563) ACSR	6-7	YCS28RG4	1	1.02	3.02	6.20	654	U28RLYRT	4	A28RLYR	4			14
1351.5 MCM (1.340)	61	YCS454A	1	2.12	5.94	12.00	L737	USE Y60 HYPRESS 4 CRIMPS MIN EACH END*					20	
2300 MCM (1.750)	61	YCS484AG1	1	2.50	6.94	14.00	L735	USE Y60 HYPRESS 4 CRIMPS MIN. EACH END*					21	

◇ YCS26A CAN BE CRIMPED WITH THE MD5-7 & MD4 USING DIE SET W5-T
* CRIMPS WILL OVERLAP.

24	3/18/94	ADDED K 1-1/2 TO CAT #YCS391AT UNDER TOOL INDEX (PCN) ADDED K 1-1/8-2 TO CAT #YCS331A UNDER TOOL INDEX 1625	JPG	DGF
MARK	DATE	REVISION	BY	CHK'D

SUPERSEDES SC 20810-6

HYSPLICE, LOOP (ALL ALUM.)

CAT. NO. YCS-A (TABLE)

SCALE 1/2

DRAWN 1-27-55 R.J.P. CHECKED 1-31-55

DRAWING NO. SD20810

REV. 24

BURNDY ENGINEERING CO. INC. 107 BRUCKNER BLVD., NEW YORK 94, N.Y.

34189
SC1431A
1-55