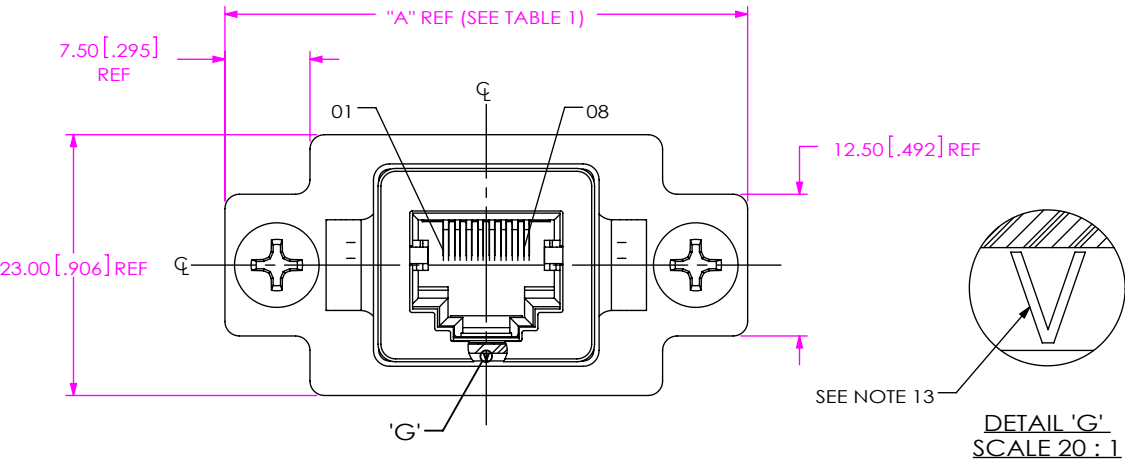


DO NOT
SCALE FROM
THIS PRINT

DESIGNED & DIMENSIONED
IN MILLIMETERS[INCHES]

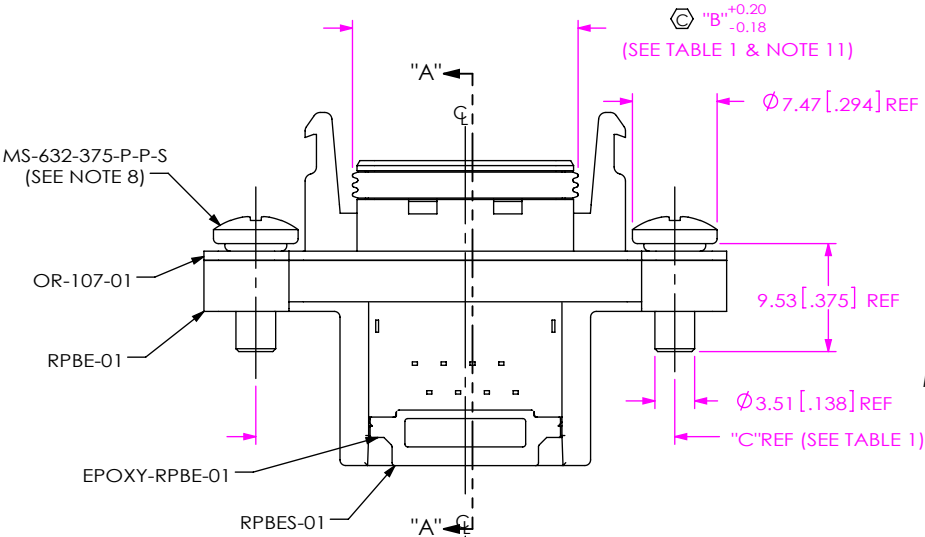
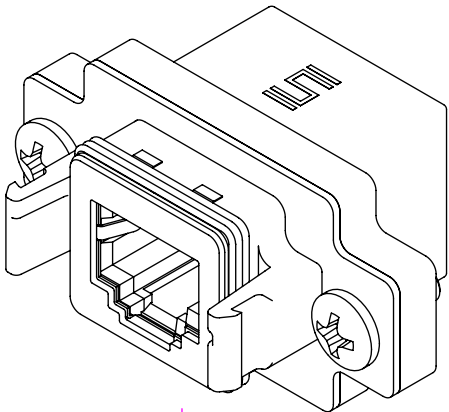


RPBE-XX-XX-X

No. OF PORTS
-01, -02

PLATING SPECIFICATION
-E: SELECTIVE, 0.00127 MIN GOLD
ON CONTACT, FLASH GOLD
ON TAIL

LEAD STYLE
-01: RIGHT ANGLE



$\phi 17.85 \pm 0.20$ / -0.18 [.703 ± 0.008 / -0.007]
(SEE NOTE 11)

OR-108-01

MODS-A-8P8C-E-02-S-C5

2.18 [.086] REF

0.81 [.032] REF

5.31 ± 0.51 [.209 ± 0.020]

SECTION "A"- "A"

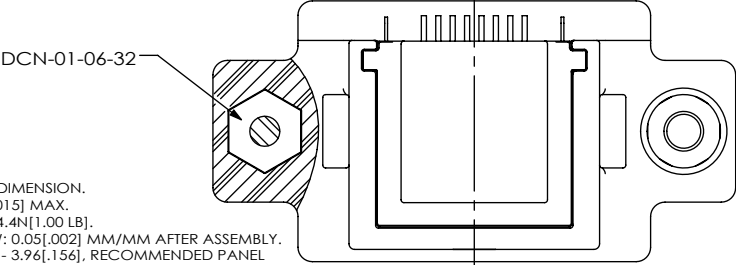


FIG 1
RPBE-01-01-E SHOWN

NOTES:

1. ϕ REPRESENTS A CRITICAL DIMENSION.
2. BURR ALLOWANCE: 0.038[.0015] MAX.
3. MINIMUM PUSHOUT FORCE: 4.4N[1.00 LB].
4. MAXIMUM ALLOWABLE BOW: 0.05[.002] MM/MM AFTER ASSEMBLY.
5. PANEL THICKNESS: 0.76[.030] - 3.96[.156], RECOMMENDED PANEL CUT OUT ON SHEET 3.
6. SEE EPOXY-RPBE-XX FOR CURING INSTRUCTIONS.
7. PARTS TO BE OVEN CURED AT 200°C FOR 10 MINUTES.
8. SEALING O-RING IS INCLUDED WITH MS-632-375-P-P-S.
9. ALL PARTS MUST BE PACKAGED IN TUBES.
10. REQUIRED TORQUE ON MS-632-375-P-P-S FOR RPBE-01-01-E: 0.32Nm ± 0.07 [45IN-OZ ± 10]
FOR RPBE-02-01-E: 0.16Nm ± 0.04 [65IN-OZ ± 5]
11. MEASURE O-RING IN THE CENTER OF THE PART.
12. EPOXY TO SEAL/WICK AROUND ALL WALLS/CONTACT TAILS.
13. OR-108-XX POSITION INDICATOR.

C:\EnterpriseVault\DWG\MISC\MKTG\RPBE-XX-XX-X-MKT.SLDDRW

TABLE 1			
NO OF PORTS	"A"	"B"	"C"
-01	46.10 [1.815]	19.90 [0.783]	36.95 [1.455]
-02	67.10 [2.642]	40.90 [1.610]	57.95 [2.281]

UNLESS OTHERWISE SPECIFIED,
DIMENSIONS ARE IN MILLIMETERS.
TOLERANCES ARE:
DECIMALS ANGLES
X.X: ± 0.3 [.01] 2°
X.XX: ± 0.13 [.005]
X.XXX: ± 0.051 [.0020]

PROPRIETARY NOTE

THIS DOCUMENT CONTAINS INFORMATION
CONFIDENTIAL AND PROPRIETARY TO
SAMTEC, INC. AND SHALL NOT BE REPRODUCED
OR TRANSFERRED TO OTHER DOCUMENTS OR
DISCLOSED TO OTHERS OR USED FOR ANY
PURPOSE OTHER THAN THAT WHICH IT WAS
OBTAINED WITHOUT THE EXPRESSED WRITTEN
CONSENT OF SAMTEC, INC.

MATERIAL: DO NOT SCALE DRAWING
INSULATOR: LCP, COLOR: BLACK
CONTACT: PHOS BRONZE
SEAL: NBR
SHIELD: COPPER ALLOY
SCREW: STAINLESS STEEL
NUT: STAINLESS STEEL
O-RING: SILICONE
EPOXY: DIELECTRIC SILICON

SHEET SCALE: 3:2

samtec

520 PARK EAST BLVD, NEW ALBANY, IN 47150
PHONE: 812-944-6733 FAX: 812-948-5047
e-Mail: info@SAMTEC.com code 55322

DESCRIPTION:
SEAL RECTANGULAR ETHERNET

DWG. NO.
RPBE-XX-XX-X

BY: T NEWTON 11/17/2009 SHEET 1 OF 4

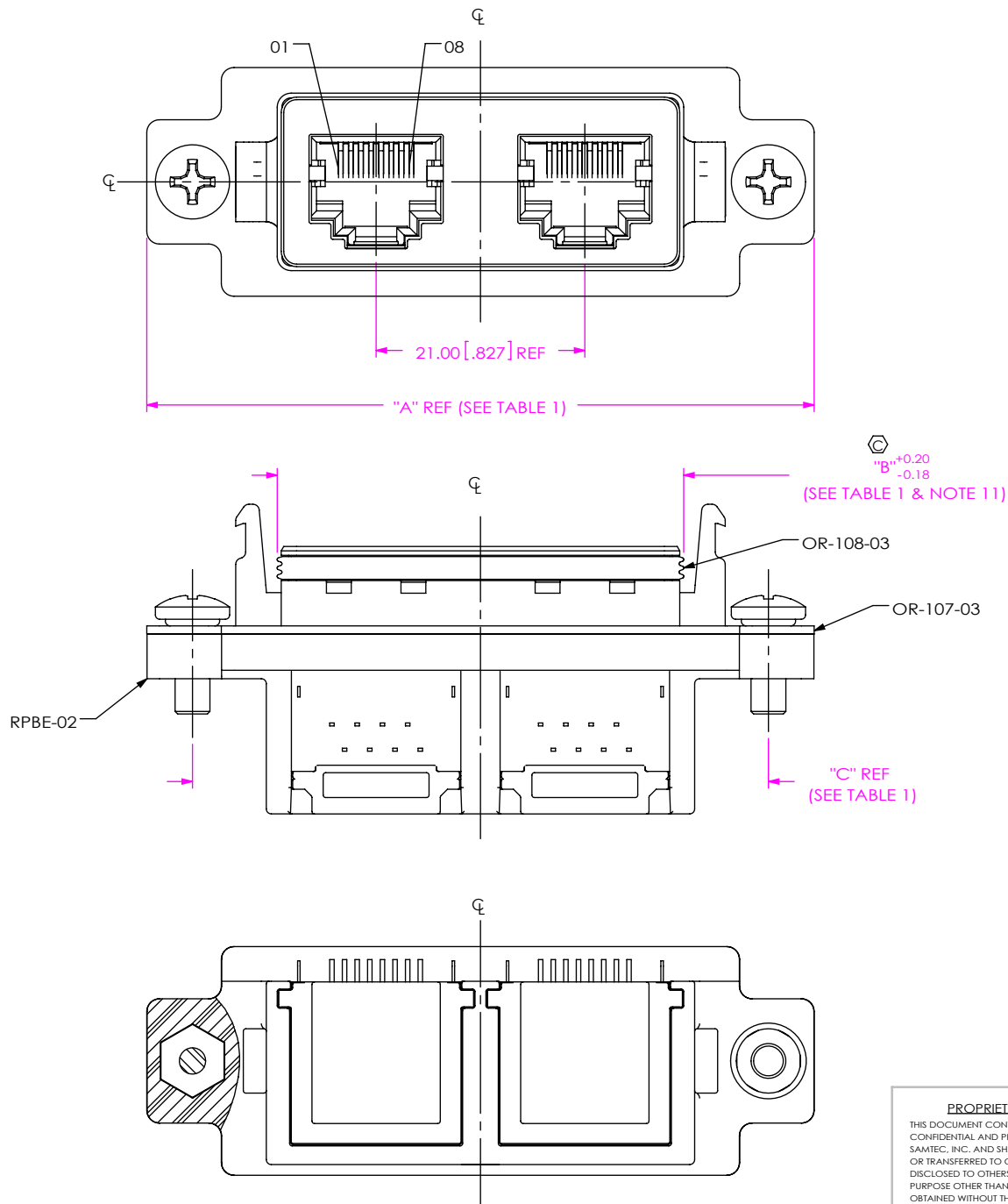


FIG 2
RPBE-02-01-E SHOWN
(SAME AS FIG 1, EXCEPT AS SHOWN)

PROPRIETARY NOTE
THIS DOCUMENT CONTAINS INFORMATION
CONFIDENTIAL AND PROPRIETARY TO
SAMTEC, INC. AND SHALL NOT BE REPRODUCED
OR TRANSFERRED TO OTHER DOCUMENTS OR
DISCLOSED TO OTHERS OR USED FOR ANY
PURPOSE OTHER THAN THAT WHICH IT WAS
OBTAINED WITHOUT THE EXPRESSED WRITTEN
CONSENT OF SAMTEC, INC.

DO NOT SCALE DRAWING

SHEET SCALE: 1.75:1

samtec

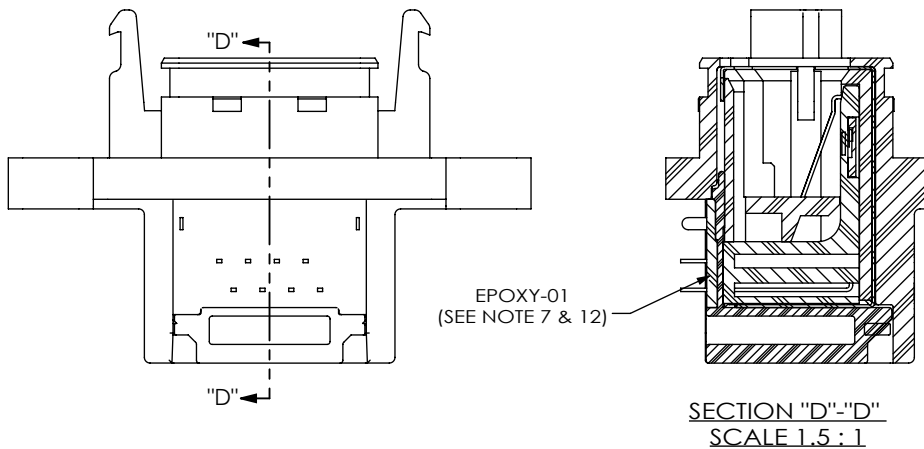
520 PARK EAST BLVD, NEW ALBANY, IN 47150
PHONE: 812-944-6733 FAX: 812-948-5047
e-Mail: info@SAMTEC.com code 55322

DESCRIPTION: SEAL RECTANGULAR ETHERNET

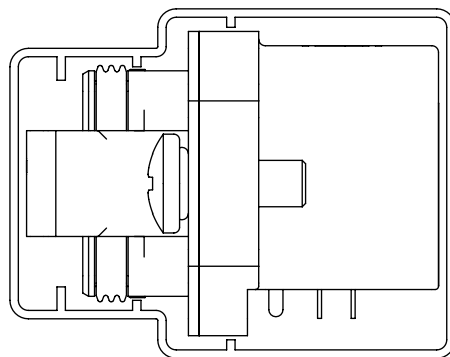
DWG. NO. RPBE-XX-XX-X

BY: T NEWTON 11/17/2009 SHEET 2 OF 4

IN-PROCESS 4
FILL EPOXY-01
(SEE NOTE 7 & 12)

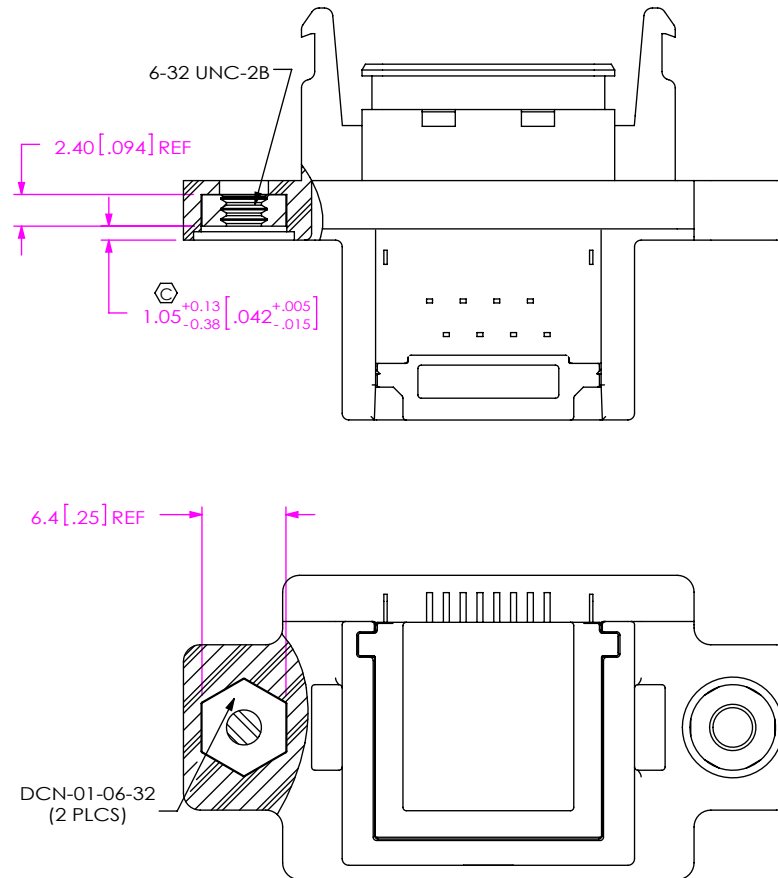


PACKAGING VIEW
(SEE NOTE 9)



TUBE: PT-RPBE001
PLUG: TP-50

IN-PROCESS 5
FILL DCN-01-06-32 & HEAT STAKE



PROPRIETARY NOTE

THIS DOCUMENT CONTAINS INFORMATION
CONFIDENTIAL AND PROPRIETARY TO
SAMTEC, INC. AND SHALL NOT BE REPRODUCED
OR TRANSFERRED TO OTHER DOCUMENTS OR
DISCLOSED TO OTHERS OR USED FOR ANY
PURPOSE OTHER THAN THAT WHICH IT WAS
OBTAINED WITHOUT THE EXPRESSED WRITTEN
CONSENT OF SAMTEC, INC.

DO NOT SCALE DRAWING

SHEET SCALE: 1.75:1

samtec

520 PARK EAST BLVD, NEW ALBANY, IN 47150
PHONE: 812-944-6733 FAX: 812-948-5047
e-Mail: info@SAMTEC.com code 55322

DESCRIPTION:
SEAL RECTANGULAR ETHERNET

DWG. NO.
RPBE-XX-XX-X

BY: T NEWTON 11/17/2009 SHEET 4 OF 4